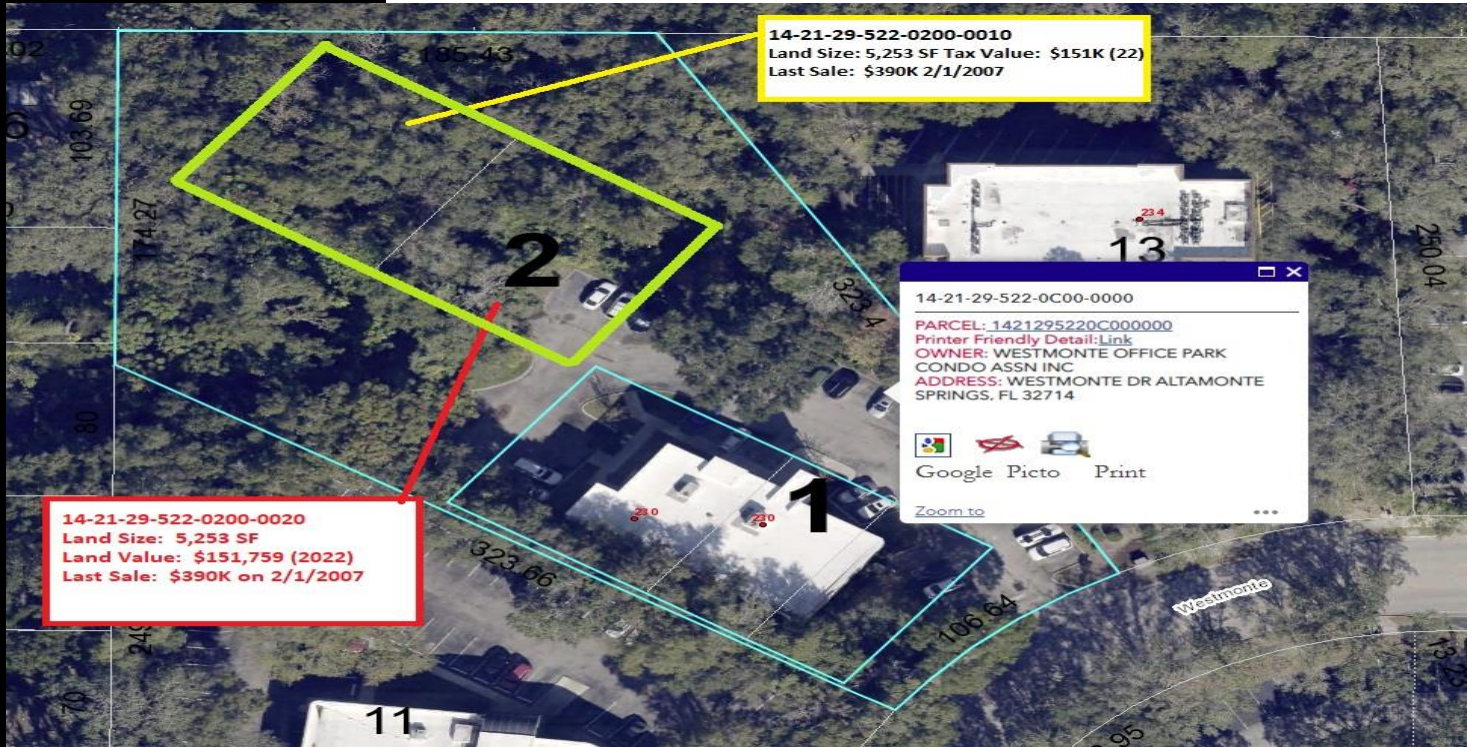


**FOR  
SALE**

**OFFICE CONDO LAND**  
**232 N. WESTMONTE DRIVE**  
**FUTURE BUILDING 2**  
**ALTAMONTE SPRINGS, FL 32714**



**14-21-29-522-0200-0020**  
Land Size: 5,253 SF  
Land Value: \$151,759 (2022)  
Last Sale: \$390K on 2/1/2007

**14-21-29-522-0200-0010**  
Land Size: 5,253 SF Tax Value: \$151K (22)  
Last Sale: \$390K 2/1/2007

14-21-29-522-0C00-0000  
PARCEL: 1421295220C000000  
Printer Friendly Detail: [Link](#)  
OWNER: WESTMONTE OFFICE PARK  
CONDO ASSN INC  
ADDRESS: WESTMONTE DR ALTAMONTE  
SPRINGS, FL 32714

Google Picto Print

Zoom to

**PROPERTY HIGHLIGHTS**

- Platted but Unimproved Office Condo Units 1 & 2, Building 2 (behind Building 1 already developed) Utilities are at the site.
- Master Condo site is 1.66 Commercial zoned site (Monument Signage)
- Units 1 & 2 with entitlements to build a minimum 10,506 SF building. Can develop a larger building with site planning and underground storage.
- Selling below market value (close to 2007 original purchase price)
- Seller Financing for Credit Buyers
- Explosive opportunity due to new traffic patterns due to recent DOT road reconfiguration forcing traffic to pass by the subject site.
- Close to I-4, SR 436, SR 434, and close to several restaurants

**Selling Price: \$400,000** (Owner Financing with \$100K down)



**CONTACT**

Vincent F. Wolle, CCIM, SIOR  
407.448.1823 mobile  
CREManager@Gmail.com

**Results Real Estate Partners, LLC**  
Licensed Commercial Real Estate Brokers  
108 Commerce Street, Suite 200  
Lake Mary, Florida 32746

407.647.0200 main  
407.647.0205 fax

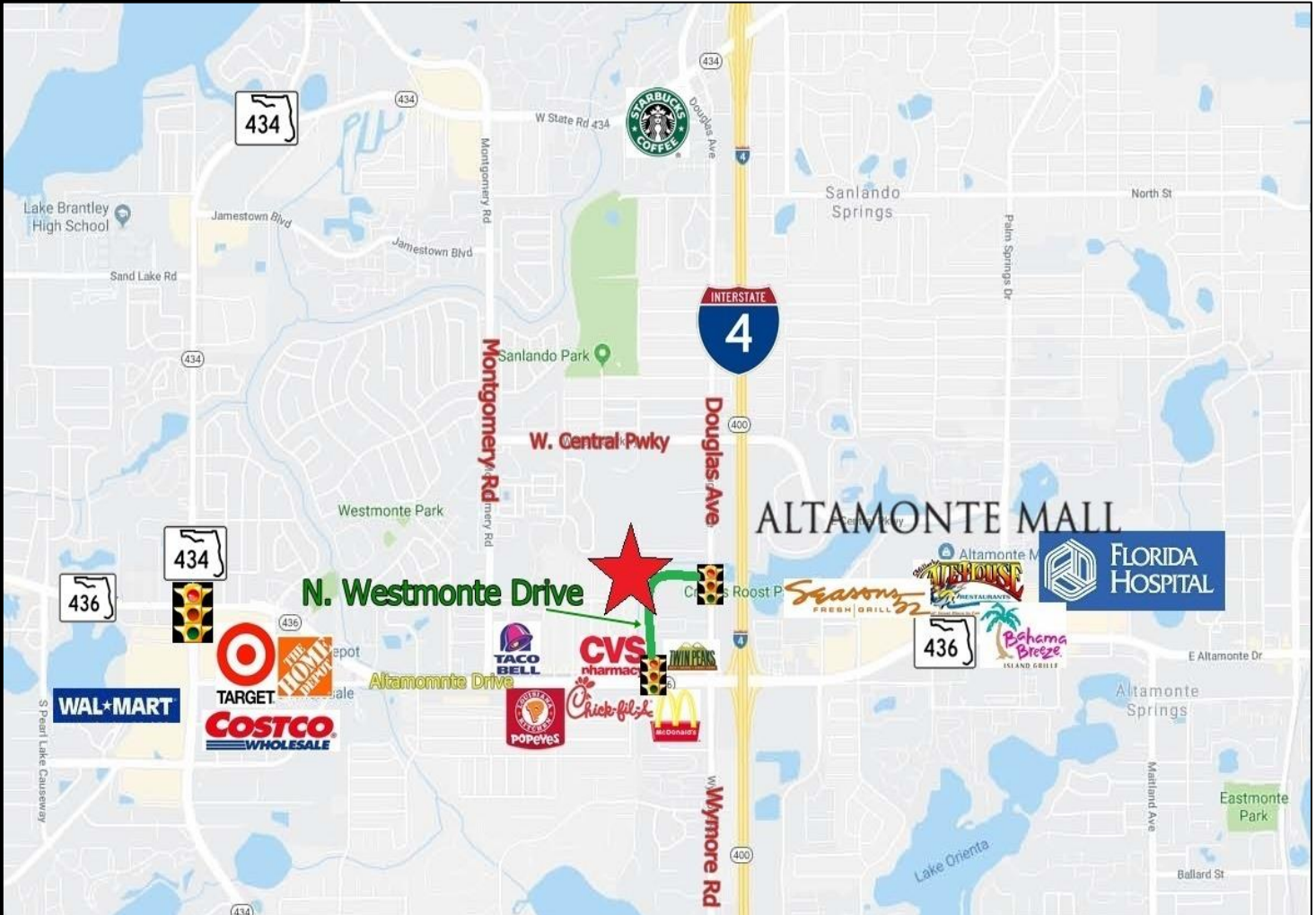
[www.ResultsREPartners.com](http://www.ResultsREPartners.com)

This information is from sources we deem reliable and is subject to prior sale, lease, withdrawal without notice, or change in prices, rates, or conditions. No representation is made as to the accuracy of any information furnished.



**FOR  
SALE**

**OFFICE CONDO LAND**  
**232 N. WESTMONTE DRIVE**  
**FUTURE BUILDING 2**  
**ALTAMONTE SPRINGS, FL 32714**



**CONTACT**

**Vincent F. Wolle, CCIM, SIOR**  
**407.448.1823 mobile**  
**CREManager@Gmail.com**

**Results Real Estate Partners, LLC**  
*Licensed Commercial Real Estate Brokers*  
108 Commerce Street, Suite 200  
Lake Mary, Florida 32746

407.647.0200 main  
407.647.0205 fax

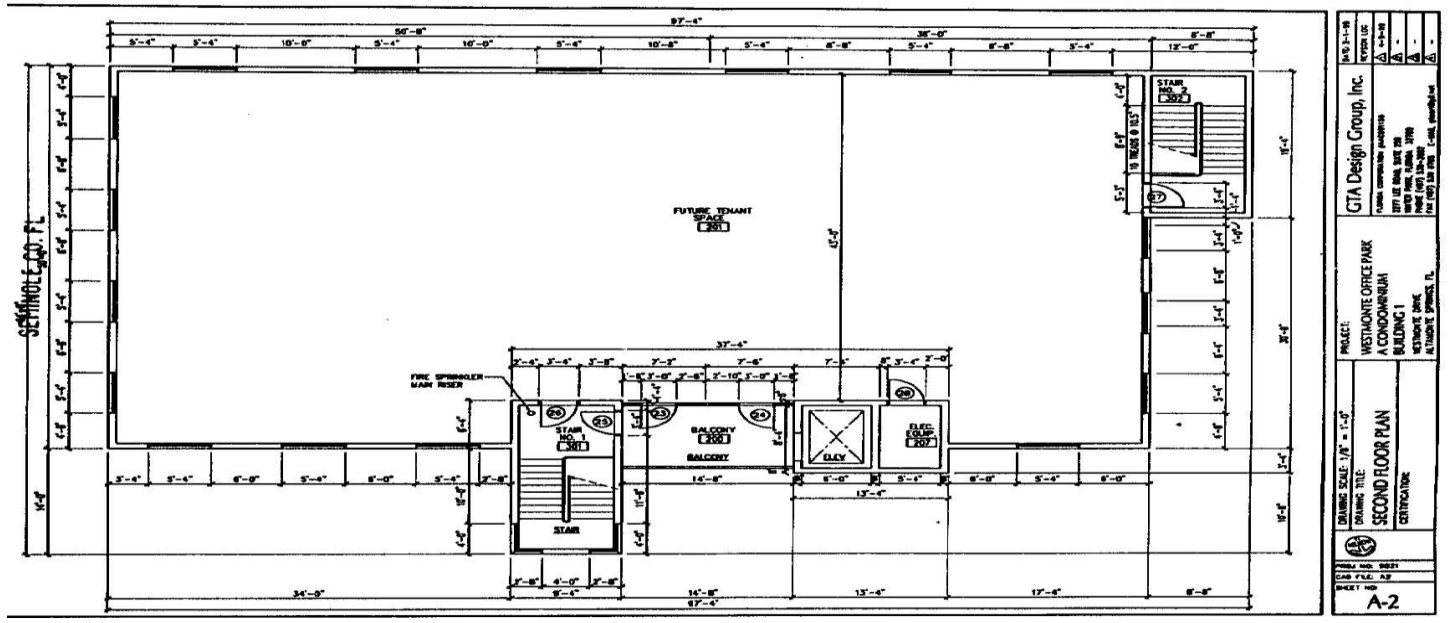
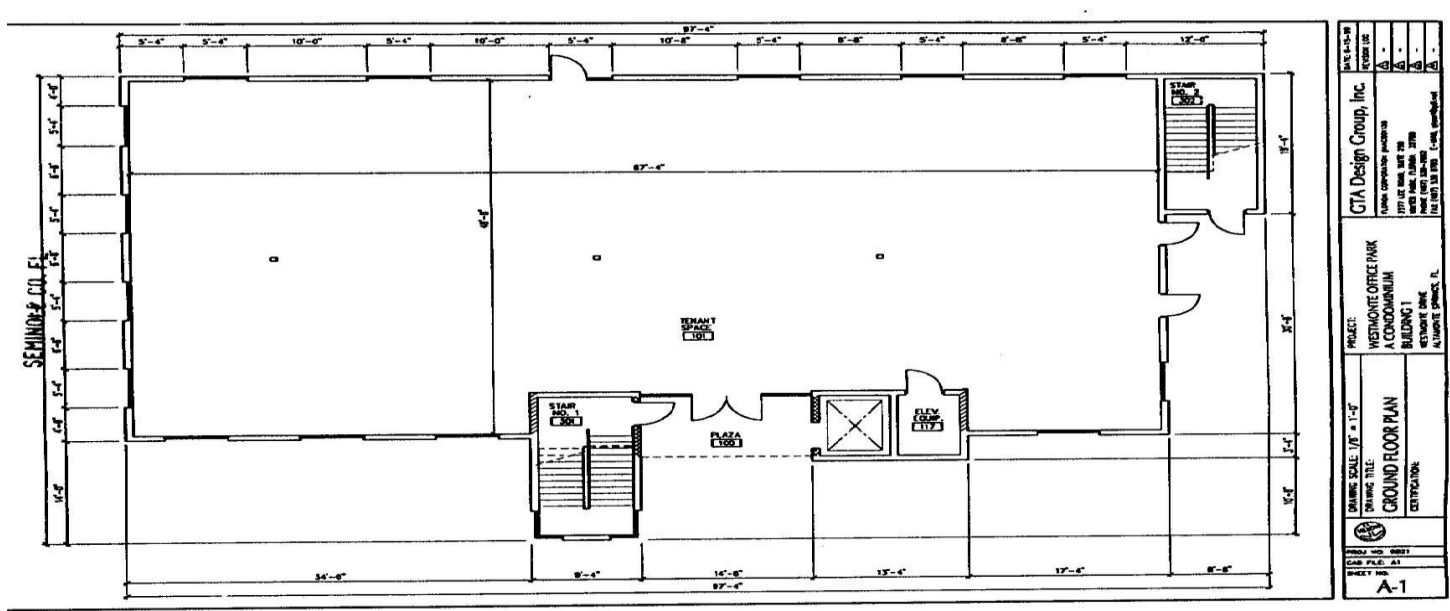
[www.ResultsREPartners.com](http://www.ResultsREPartners.com)



This information is from sources we deem reliable and is subject to prior sale, lease, withdrawal without notice, or change in prices, rates, or conditions. No representation is made as to the accuracy of any information furnished.

# FOR SALE

**OFFICE CONDO LAND**  
**232 N. WESTMONTE DRIVE**  
**FUTURE BUILDING 2**  
**ALTAMONTE SPRINGS, FL 32714**



**Results Real Estate Partners, LLC**

Licensed Commercial Real Estate Brokers  
 108 Commerce Street, Suite 200  
 Lake Mary, Florida 32746

407.647.0200 *main*  
 407.647.0205 *fax*

[www.ResultsREPartners.com](http://www.ResultsREPartners.com)

**CONTACT**

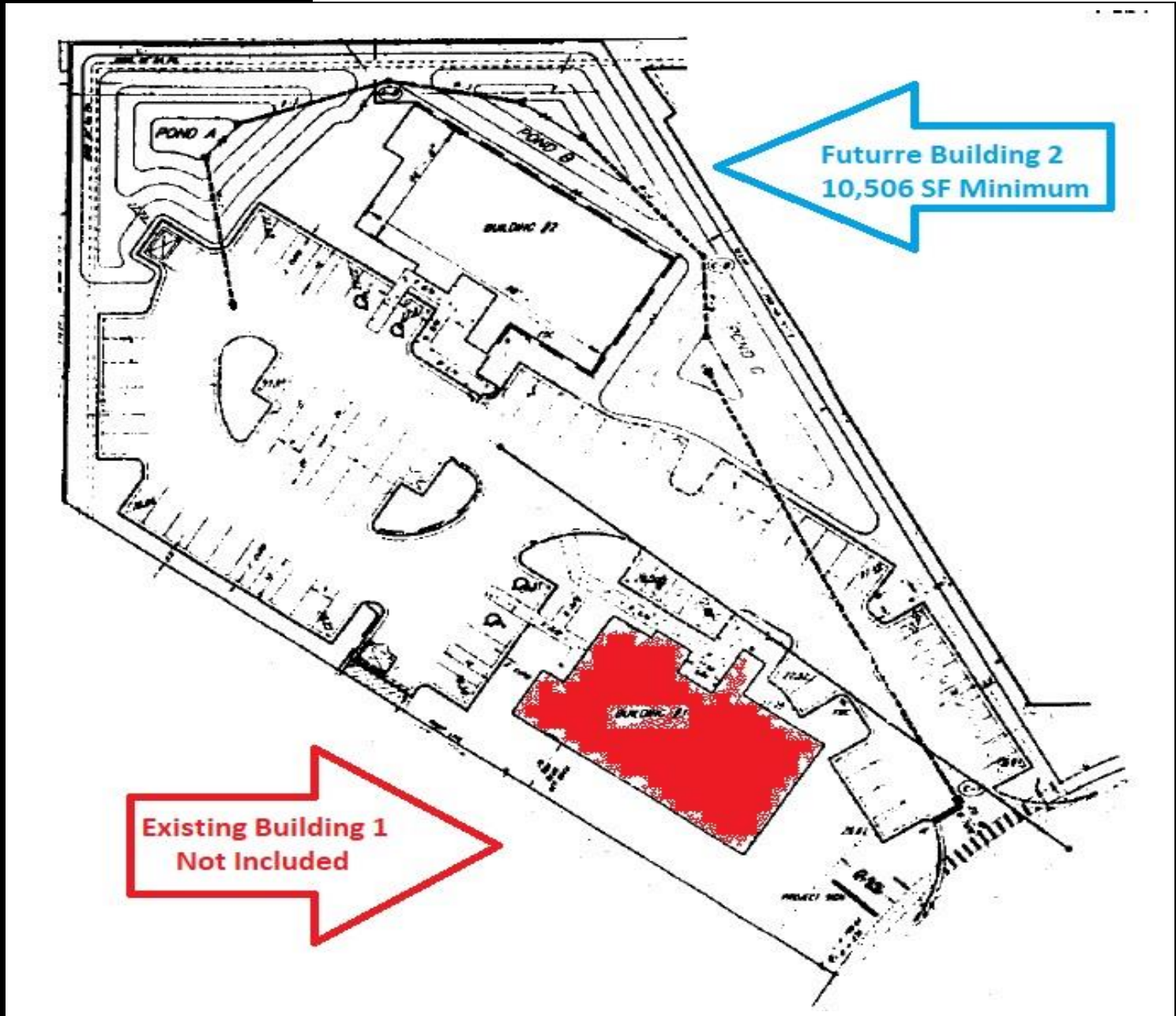
Vincent F. Wolle, CCIM, SIOR  
 407.448.1823 *mobile*  
 CREManager@Gmail.com

This information is from sources we deem reliable and is subject to prior sale, lease, withdrawal without notice, or change in prices, rates, or conditions. No representation is made as to the accuracy of any information furnished.



**FOR  
SALE**

**OFFICE CONDO LAND**  
**232 N. WESTMONTE DRIVE**  
**FUTURE BUILDING 2**  
**ALTAMONTE SPRINGS, FL 32714**



**Results Real Estate Partners, LLC**

*Licensed Commercial Real Estate Brokers*  
108 Commerce Street, Suite 200  
Lake Mary, Florida 32746

407.647.0200 *main*  
407.647.0205 *fax*

[www.ResultsREPartners.com](http://www.ResultsREPartners.com)

**C O N T A C T**

**Vincent F. Wolle, CCIM, SIOR**  
407.448.1823 *mobile*  
CREManager@Gmail.com

This information is from sources we deem reliable and is subject to prior sale, lease, withdrawal without notice, or change in prices, rates, or conditions. No representation is made as to the accuracy of any information furnished.