

For Sale

Daytona LPGA Blvd Development Land

9 Acres | \$2,500,000



Map data ©2022 Imagery ©2022, CNES / Airbus, Landsat / Copernicus, Maxar Technologies, U.S. Geological Survey

LPGA Boulevard

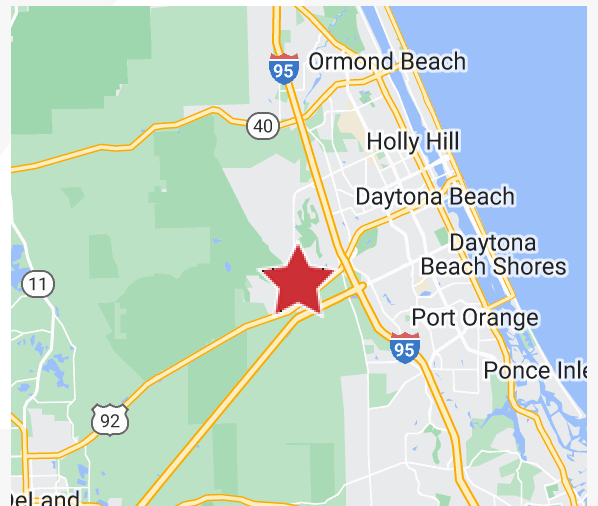
Daytona Beach, Florida 32124

Property Highlights

- Single remaining parcel with office, commercial and multifamily opportunities
- Near Jimmy Buffett's Latitudes, Mosaic and LPGA development projects
- Frontage on LPGA Boulevard
- Close to I-4, I-95, US Hwy 92, Daytona Beach International Airport & Daytona International Speedway
- Zoning: SFR-5 with Mixed Use Land Use

OFFERING SUMMARY

Sale Price	\$2,500,000
Lot Size	9.0 Acres



For more information

Steve Costa

O: 386 238 3600
scosta@realvest.com

Ted Lightman, CCIM

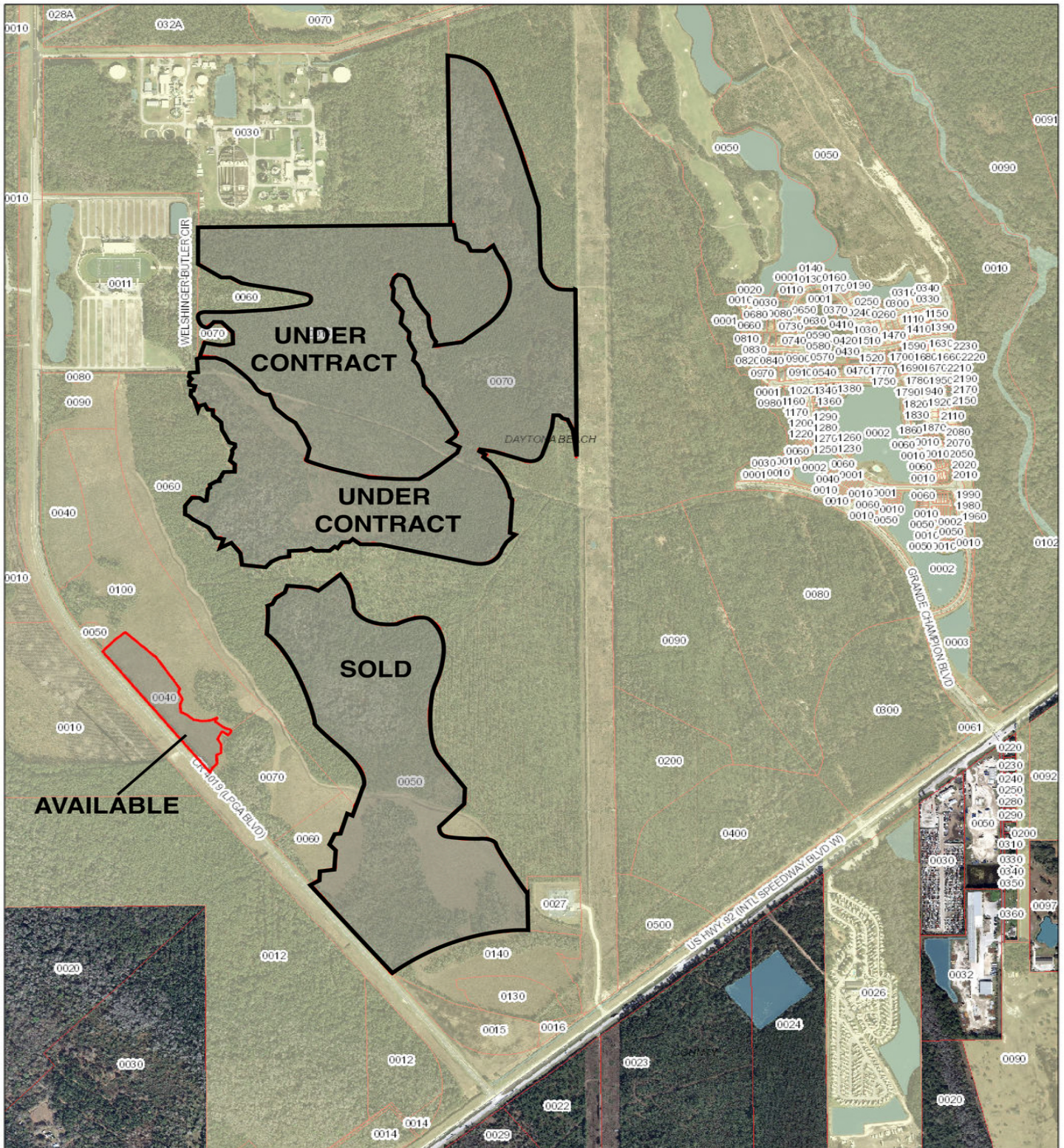
O: 386 238 3600
tlightman@realvest.com

Sale Price: \$2,500,000

Growth Map

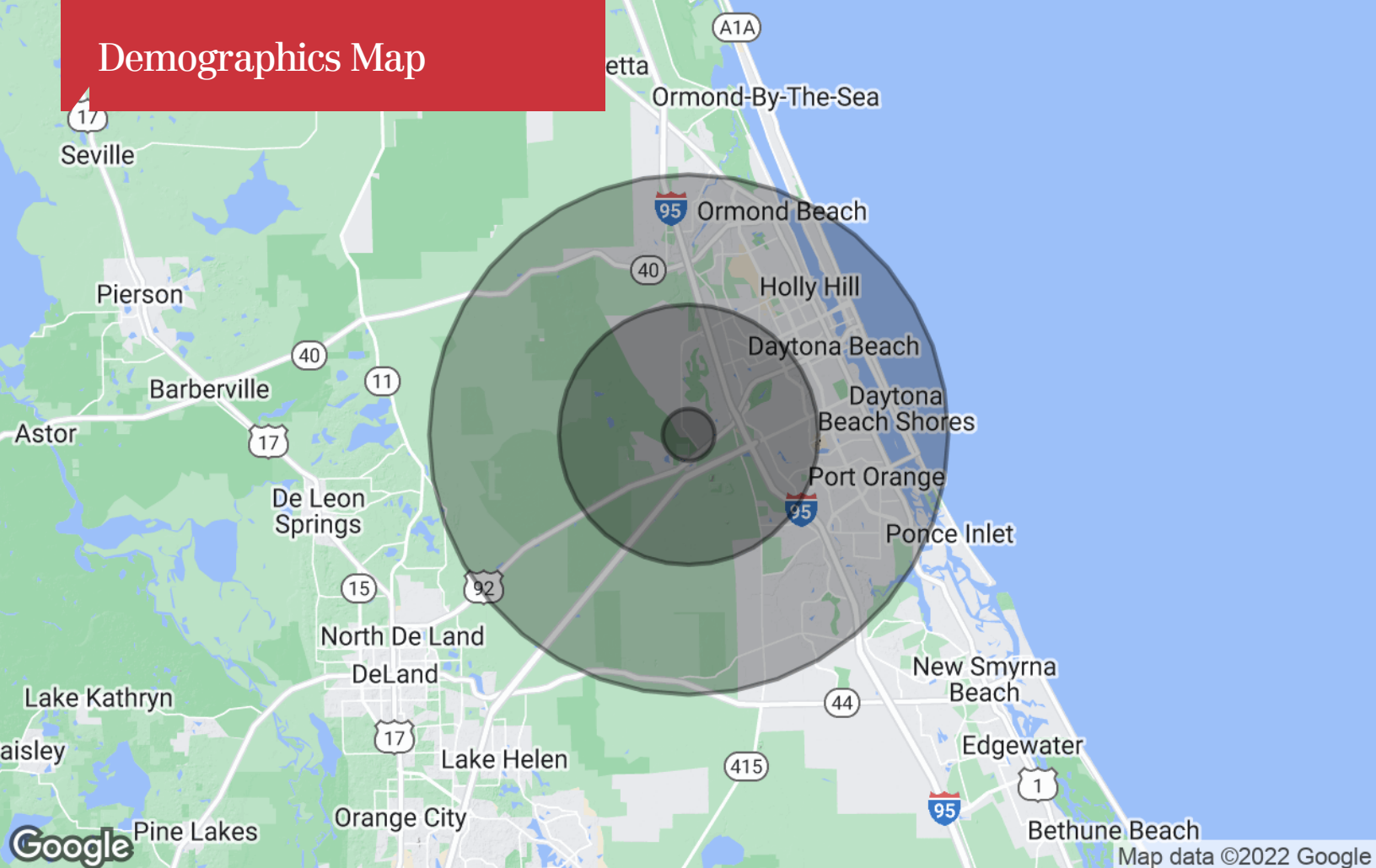


Volusia County Property Appraiser



August 30, 2019

Demographics Map



Population

	1 Mile	5 Miles	10 Miles
TOTAL POPULATION	307	36,976	203,303
MEDIAN AGE	32.5	36.0	43.0
MEDIAN AGE (MALE)	32.0	34.7	41.2
MEDIAN AGE (FEMALE)	35.2	38.7	44.7

Households & Income

	1 Mile	5 Miles	10 Miles
TOTAL HOUSEHOLDS	108	13,630	84,511
# OF PERSONS PER HH	2.8	2.7	2.4
AVERAGE HH INCOME	\$111,607	\$46,491	\$53,177
AVERAGE HOUSE VALUE	\$331,388	\$328,794	\$214,847

* Demographic data derived from 2020 ACS - US Census