

# Commercial Real Estate Advisors

A marketing company licensed to broker real estate



**15,871 SF CG Zoned Land For Sale**

**Corner Parcel**

**641-643 Tamiami Trail**

**(aka 1015 Moss Drive)**

**Port Charlotte, FL 33953**

**\$300,000**



**Howard J. Corr CCIM**  
Managing Broker  
[D] 941.815.2129  
[E] H.Corr@CorrAdvisors.com



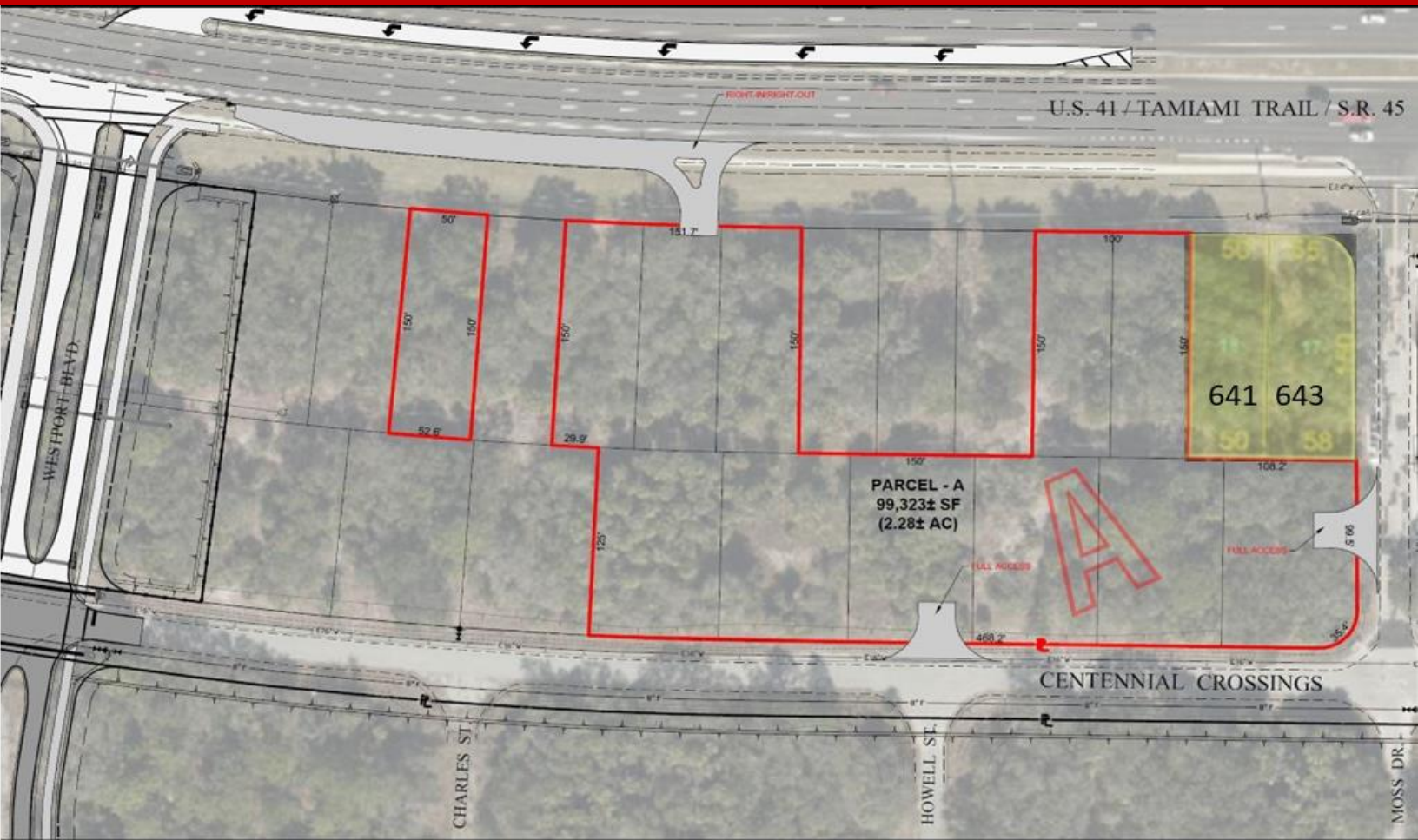
**CORR**  
**COMMERCIAL ADVISORS**  
REAL ESTATE SERVICES

**941.740.1215**

18501 Murdock Cir Suite 300 | Port Charlotte FL, 33948

OFFICE | MEDICAL OFFICE | INDUSTRIAL | RETAIL | LAND | MULTIFAMILY

# 641-643 Tamiami Trail, Port Charlotte



Double-lot parcel on the corner of Tamiami Trail and Moss Drive (directly north of the West Port Subdivision) available for sale. Water and sewer nearby. Plus, if you invest in an additional twelve mostly contiguous CG-zoned lots in Parcel A (adjacent to this listing) that offers frontage on Tamiami Trail (six lots on Tamiami Trail plus six lots behind them on Franklin Avenue - an additional 2.45 acres), you can create an impressive presence on Tamiami Trail! Vacant commercial land is going fast! Don't miss this opportunity to add your business at busy Tamiami Trail in Port Charlotte!



**CORR**

**COMMERCIAL ADVISORS** 18501 Murdock Cir Suite 300  
REAL ESTATE SERVICES Port Charlotte FL, 33948

OFFICE 941.740.1215  
CorrCommercialAdvisors.com

# Executive Summary

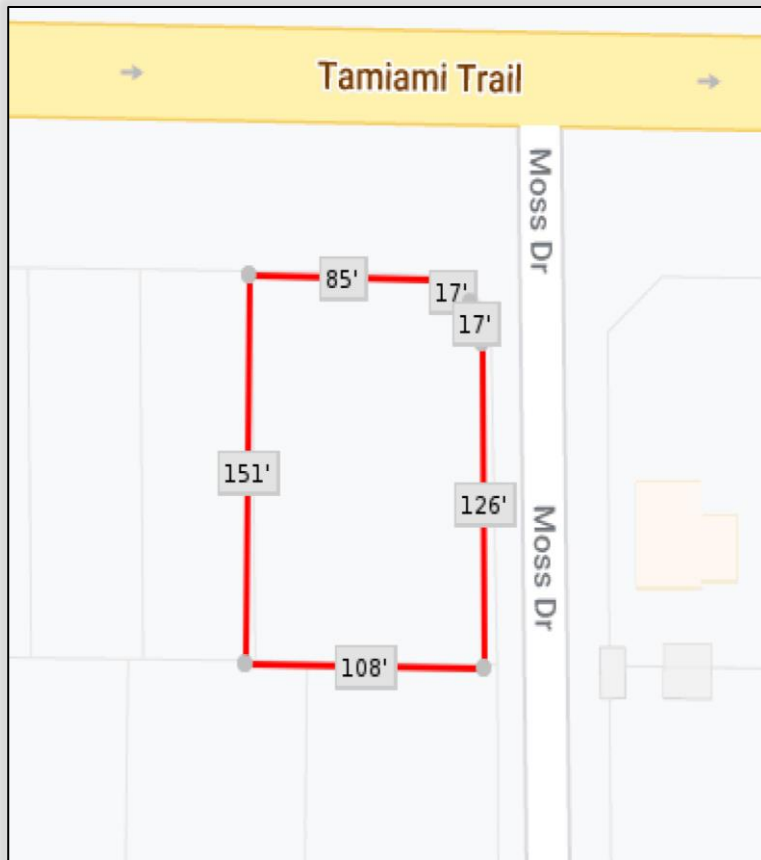


## PROPERTY DETAILS

Address:	641-643 Tamiami Trail, Port Charlotte 33953
Land Area:	15,871 SF (.36 A)
Sale Price:	\$300,000
Zoning:	CG – Commercial General
CG Uses	<a href="https://library.municode.com/fl/charlotte_county/codes/code_of_ordinances?nodeId=PTIII_LADEGRMA_CH3-9ZO_ARTIIDIRE_S3-9-42COGECG">https://library.municode.com/fl/charlotte_county/codes/code_of_ordinances?nodeId=PTIII_LADEGRMA_CH3-9ZO_ARTIIDIRE_S3-9-42COGECG</a>
CCU Interactive Map	<a href="https://ccgis.charlottecountyfl.gov/apps/mapbook/">https://ccgis.charlottecountyfl.gov/apps/mapbook/</a>

## SITE SUMMARY

Double-lot parcel on the corner of Tamiami Trail at Moss Drive. Can be combined with Parcel A to create an impressive presence on Tamiami Trail just north of the West Port Subdivision. Vacant commercial land is going fast! Don't miss this opportunity to add your business at busy Tamiami Trail in Port Charlotte!



## Demographic Statistics

Proximity:	1 mile	3 miles	5 miles
<b>Total Population:</b>	1,322	25,897	88,524
<b>Median Age:</b>	48.1	45.3	49.2
<b>Households:</b>	526	10,142	37,050
<b>Median Home Income:</b>	64,105	67,199	65,387
<b>Per Capita Income:</b>	35,011	35,998	37,144

## Traffic Volume

Collection Street	Cross Street	Traffic Volume	Year	Mile Radius
Tamiami Trail	Chamberlain Blvd.	29,000	2022	.5 mile
Tamiami Trail	Toledo Blade Blvd.	15,600	2022	1 mile
Veterans Blvd.	Atwater St.	25,500	2022	3.5 miles
Tamiami Trail	Harbor Blvd.	46,500	2022	5 miles



**CORR**

COMMERCIAL ADVISORS 3 18501 Murdock Cir Suite 300  
REAL ESTATE SERVICES Port Charlotte FL, 33948

OFFICE 941.740.1215  
CorrCommercialAdvisors.com

# Aerial Map



## The Port Charlotte Advantage:

Found along Florida's welcoming Gulf Coast, Port Charlotte is in Charlotte County and shares city borders with North Port and Punta Gorda. With a positive employment rate of 2.36%, Port Charlotte is a growing opportunity for the workforce. The Punta Gorda Interstate Airport Park - a 4,300-acre global opportunity - offers not only access but also large-scale site selection and flexibility.

The newly planned community of West Port has broken ground. Just minutes from the Port Charlotte Town Center, the master-planned community is creating excitement by developing 2,000 new homes and thousands of new commercial square footage.



**CORR**  
COMMERCIAL ADVISORS  
REAL ESTATE SERVICES

18501 Murdock Cir Suite 300  
Port Charlotte FL, 33948

OFFICE 941.740.1215  
CorrCommercialAdvisors.com



Corr Commercial Advisors was built on the values the Corr name instituted almost 70 years ago. Built on entrepreneurship, integrity, creativity, and excellence, Corr Commercial Advisors, LLC was established, serving communities from Sarasota to Fort Myers in the southwest Florida region. Corr Commercial Advisors is your only choice in commercial real estate.

Howard J. Corr CCIM, Managing Broker of CCA, is determined to set the example and lead the way of how commercial real estate is conducted in SWFL. The concept of listing your property and waiting for it to sell is a thing of the past. CCA is a marketing company with a broker's license that is accountable, collaborative, and knowledgeable, prepared to be your full-service real estate and property management brokerage. With CCA, a team of committed and enthusiastic professionals not only understands the business but has been a pivotal part of its growth and development over the last several decades and will completely manage your real estate transaction. Over the last 35+ years, Corr has had the opportunity to own and manage several real estate companies including CCA. Corr was a partner in the development company responsible for creating a 6,000-acre community known as Apollo Beach, Florida. This included the development, management and operation of infrastructure, utilities and 55 miles of interconnecting waterways with direct access to Tampa Bay. Corr Commercial Advisors, LLC is committed to delivering unparalleled service, knowledge, and experience to SWFL. If you are looking to conduct a real estate transaction or need property management, choosing CCA will be one of the most important decisions you will make. Thank you for entrusting us with your real estate needs!



**Howard J. Corr CCIM**  
Managing Broker  
Direct - 941.815.2129  
H.Corr@CorrAdvisors.com

## MISSION STATEMENT

The mission of Corr Commercial Advisors is to provide custom-designed commercial real estate solutions which exceed the expectations of our clients.

## EXPECTATIONS

Today's transactions involve specific skills for managing and solving multifaceted real estate challenges. We meet these challenges head on by remaining current and knowledgeable of the markets we serve. We commit ourselves and resources to provide professional quality service to address the specific needs of our clients.

## CERTIFICATIONS

Howard Corr attained his CCIM designation in 1985. A CCIM, Certified Commercial Investment Member, is a recognized expert in the commercial and investment real estate industry. CCIMs have completed a designation curriculum that covers essential skill sets including ethics, interest-based negotiation, financial analysis, market analysis, user decision analysis, and investment analysis for commercial investment real estate. CCIMs have completed a portfolio demonstrating the depth of their commercial real estate experience. Finally, they have demonstrated their proficiency in the CCIM skill sets by successfully completing a comprehensive examination. Only then is the designation candidate awarded the coveted CCIM pin.





## CONFIDENTIALITY & DISCLAIMER STATEMENT

The information contained in this document is proprietary and strictly confidential. It is intended to be reviewed only by the party receiving it from Corr Commercial Advisors LLC and should not be made available to any other person or entity without the written consent of Corr Commercial Advisors LLC. This document has been prepared to provide summary, unverified information to prospective purchasers, and to establish only a preliminary level of interest in the subject property. The information contained herein is not a substitute for a thorough due diligence investigation. Corr Commercial Advisors LLC has not made any investigation, and makes no warranty or representation, with respect to the income or expenses for the subject property, the future projected financial performance of the property, the size and square footage of the property and improvements, the presence or absence of contaminating substances, PCB's or asbestos, the compliance with State and Federal regulations, the physical condition of the improvements thereon, or the financial condition of the business prospects of any tenants, or any tenant's plans or intentions to continue its occupancy of the subject property. The information contained in this Offering Memorandum has been obtained from sources we believe to be reliable; however, Corr Commercial Advisors, LLC has not verified, and will not verify, any of the information contained herein, nor has Corr Commercial Advisors LLC conducted any investigation regarding these matters and makes no warranty or representation whatsoever regarding the accuracy or completeness of the information provided. Some or all the photographs contained within may have been altered from their original format. All potential buyers must take appropriate measures to verify all the information set forth herein.



**CORR**

**COMMERCIAL ADVISORS** 18501 Murdock Cir Suite 300  
REAL ESTATE SERVICES Port Charlotte FL, 33948

OFFICE 941.740.1215  
CorrCommercialAdvisors.com