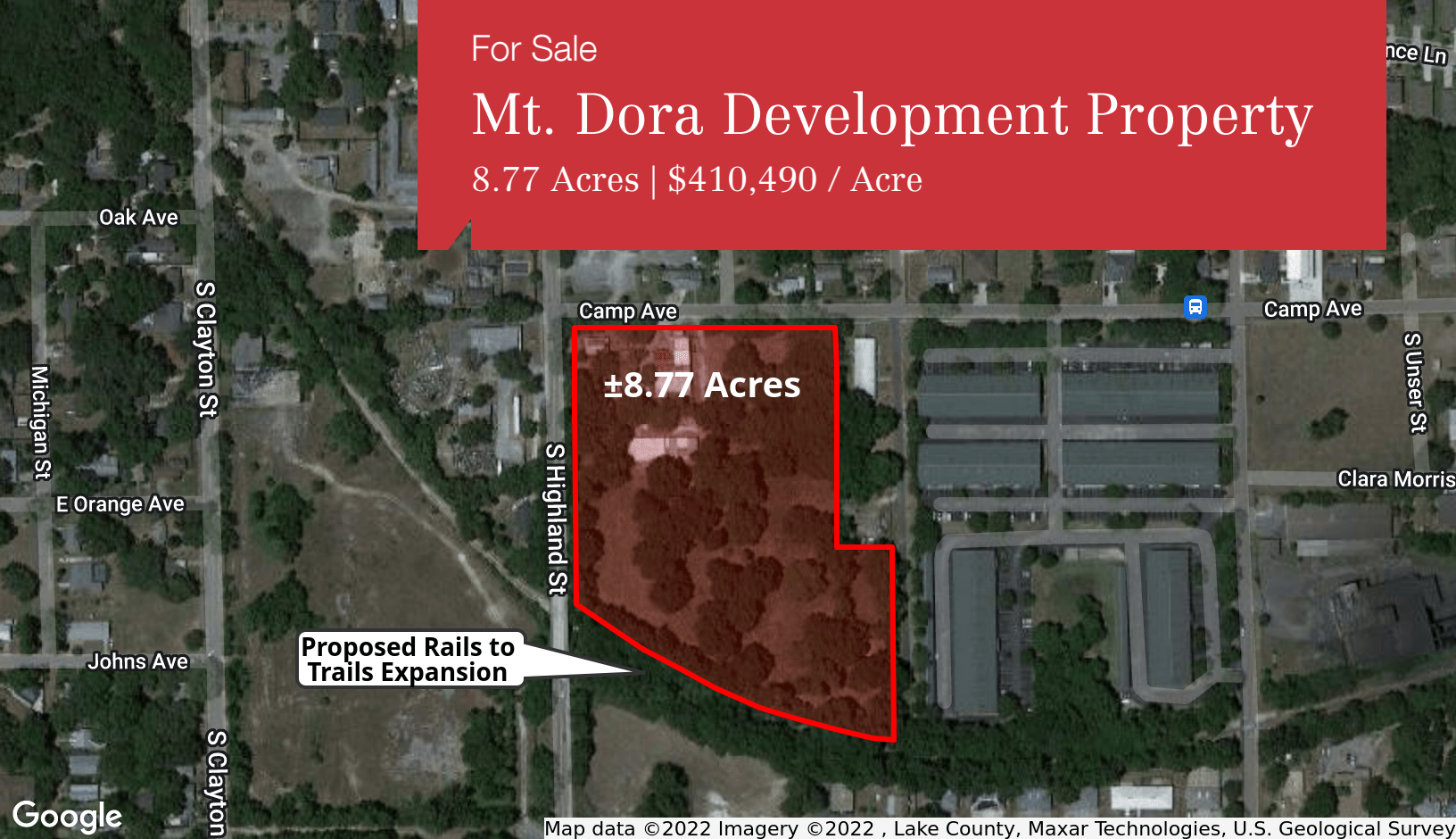


For Sale

Mt. Dora Development Property

8.77 Acres | \$410,490 / Acre



Map data ©2022 Imagery ©2022, Lake County, Maxar Technologies, U.S. Geological Survey

610 South Highland Street

Mount Dora, Florida 32757

Property Highlights

- ±8.77 Acres for Residential/Mixed Use
- Located in Highly Desirable Downtown Mount Dora
- Southeast Corner of Highland Street and Camp Road
- Great Visibility and Access
- Zoning - MU-1 (Mixed Use Traditional), City of Mt. Dora
- Zoning Allows up to 35 Residential Units/Acre and Commercial FAR of 3.0
- Strong Demographics
- All Utilities Available to the Property
- Outstanding Location for Multifamily, Mixed Use

DEMOGRAPHICS

Stats	Population	Avg. HH Income
1 Mile	6,501	\$77,091
3 Miles	29,780	\$88,845
5 Miles	62,856	\$82,419



For more information

Kevin O'Connor

O: 407 949 0736
koconnor@realvest.com

Matthew Cichocki

O: 407 949 0738
mcichocki@realvest.com

Sale Price: \$3,600,000

Retailer Map



Downtown Mt. Dora

