



# Parcel K in Humacao For Sale

Directly adjacent to the Palmas del Mar Main Entrance

Bo. Candelero Abajo Humacao, PR

Exclusively listed by JLL

## Overview

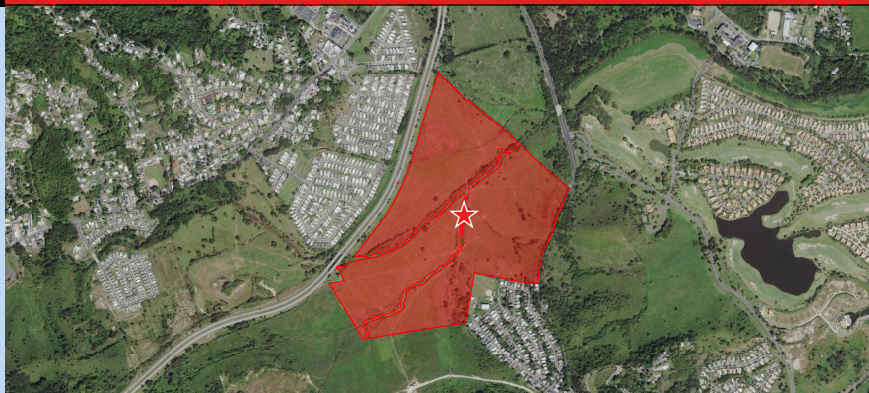
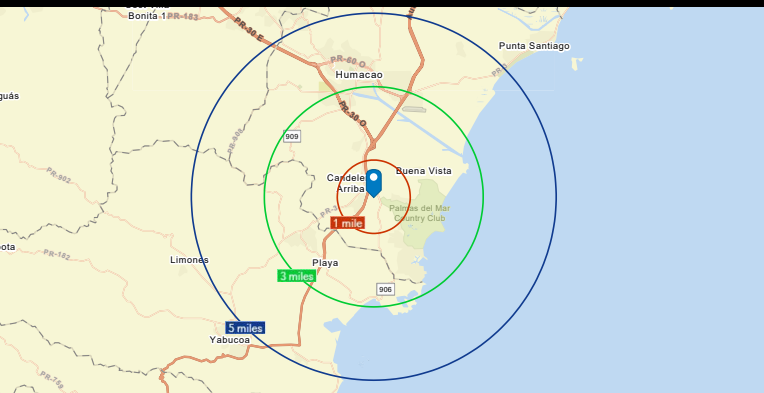
<b>SIZE</b>	135 +/- acres
<b>LOCATION</b>	<a href="#">18.100396, -65.817522</a>
<b>PRODUCT TYPE</b>	Land for Development
<b>ZONING</b>	R-1 (Intermediate Residential)
<b>CADASTER #</b>	329-000-010-39
<b>PRICE</b>	<b>\$7,100,000</b>

## Highlights

- Opportunity for residential development.
- Great location fronting PR-53 directly adjacent to the main entrance of Palmas del Mar.



**FOR SALE 135 +/- ACRES**



**Diego Sampson**  
Transaction Advisor

Lic. # C-18627  
Puerto Rico & Florida  
+1 407 724 1167  
+1 787 777 5800  
[diego.sampson@am.jll.com](mailto:diego.sampson@am.jll.com)

**Andy Carlson**  
Market Lead | JLL PR

Lic. # C-17494  
Puerto Rico, Caribbean  
& LatAm  
+1 787 777 5800  
[andy.carlson@am.jll.com](mailto:andy.carlson@am.jll.com)

JLL Puerto Rico Realty & Co., S. En C. | License Number: E-297  
+1 787 777 5800 | 27 González Giusti Street Suite 101, Guaynabo PR 00968  
[www.us.jll.com/puerto-rico](http://www.us.jll.com/puerto-rico)

Although information has been obtained from sources deemed reliable, JLL does not make any guarantees, warranties or representations, express or implied, as to the completeness or accuracy as to the information contained herein. Any projections, opinions, assumptions or estimates used are for example only. There may be differences between projected and actual results, and those differences may be material. JLL does not accept any liability for any loss or damage suffered by any party resulting from reliance on this information. If the recipient of this information has signed a confidentiality agreement with JLL regarding this matter, this information is subject to the terms of that agreement. ©2020. Jones Lang LaSalle IP, Inc. All rights reserved.