



## WINTER PARK MULTI-TENANT RETAIL

7250 ALOMA AVE  
WINTER PARK, FL 32792

### AVAILABLE

Jamison Commercial Partners is pleased to present this 5,887± SF multi-tenant retail strip center located at the SW corner of Aloma Ave. and Seminole Ave. in highly sought-after Winter Park.

### PROPERTY OVERVIEW

- » 5,887 +/- SF Multi-Tenant Retail Strip Center
- » Located in Winter Park at the SW corner of Seminole Ave. west of Goldenrod Rd.
- » Former bank branch with attached (3) lane drive-thrus
- » 2,850 +/- SF vacant
- » (4) minutes to SR 417 and (7) minutes to SR 50
- » Large generator included
- » Offering Price: \$1,650,000



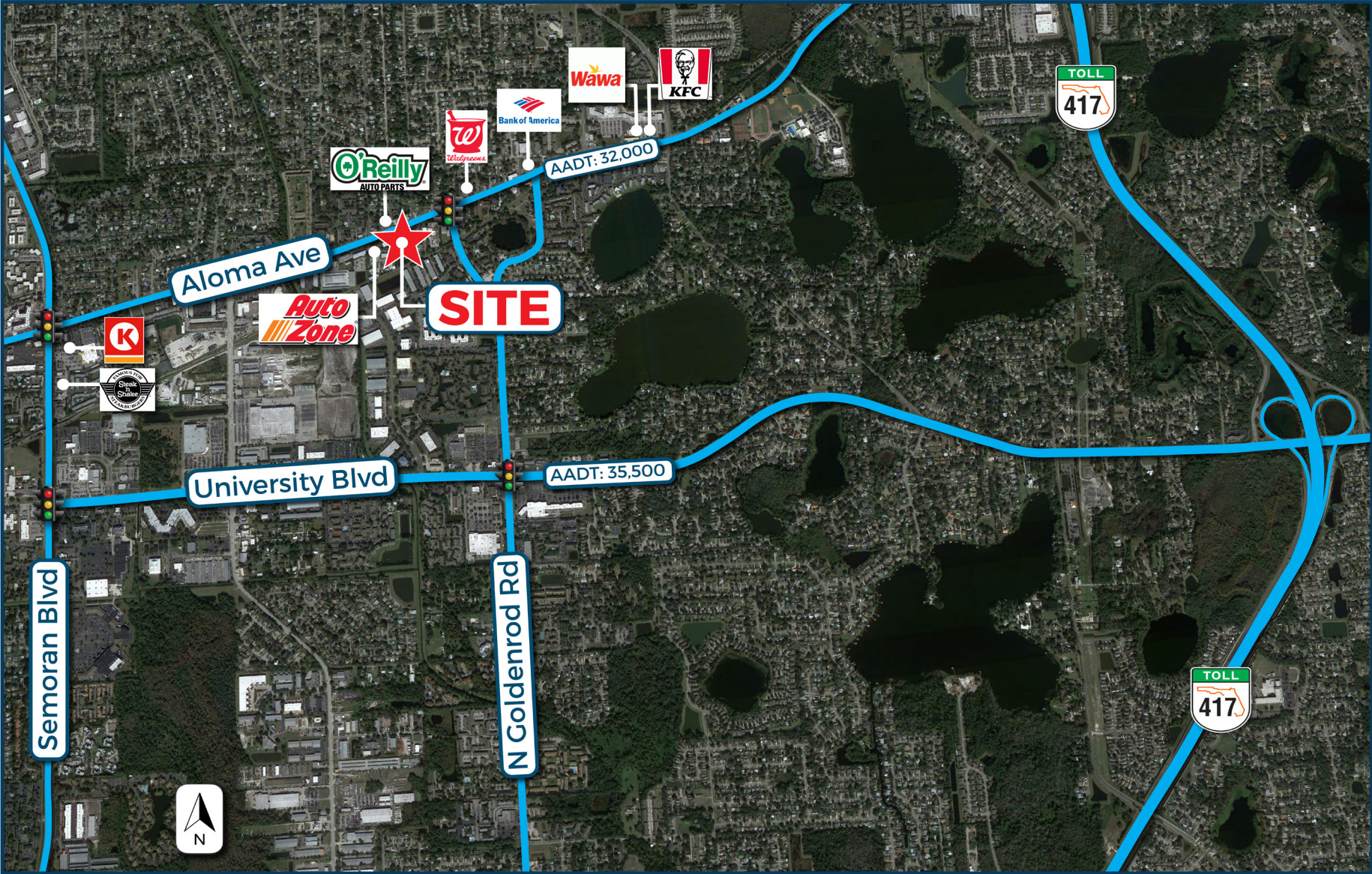
DARRYL  
DOTHEROW, CCIM

SENIOR VICE PRESIDENT | 407.716.0654  
DDOTHEROW@JAMISONCOMMERCIAL.COM

JAMISONCOMMERCIAL.COM



NEIGHBORHOOD MAP





## 2022 DEMOGRAPHICS



GENERAL  
POPULATION

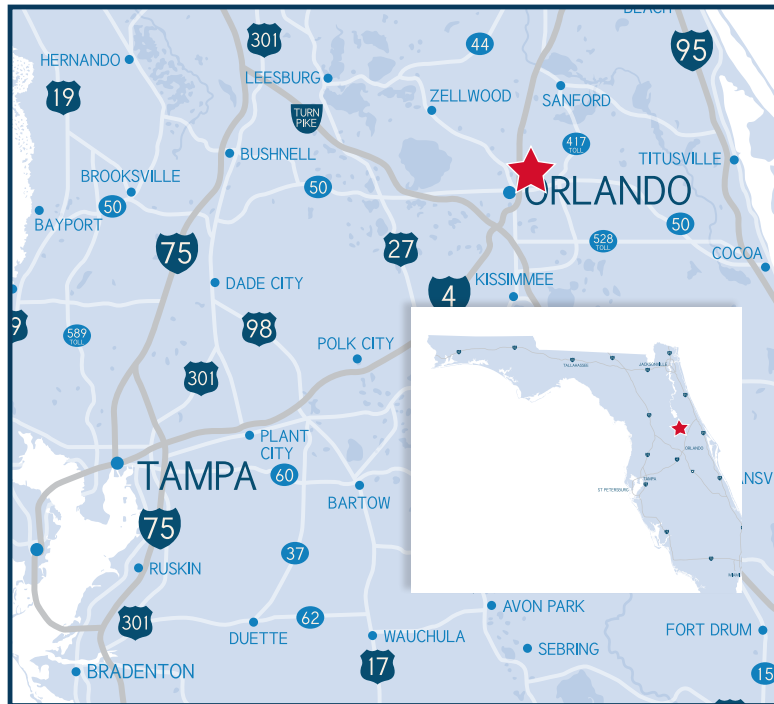


NUMBER OF  
HOUSEHOLDS



AVG. HOUSEHOLD  
INCOME

			1 MILES
16,629	7,303	\$72,643	
101,465	42,078	\$101,352	3 MILES
263,012	105,053	\$103,967	5 MILES



## PROPERTY PHOTOS

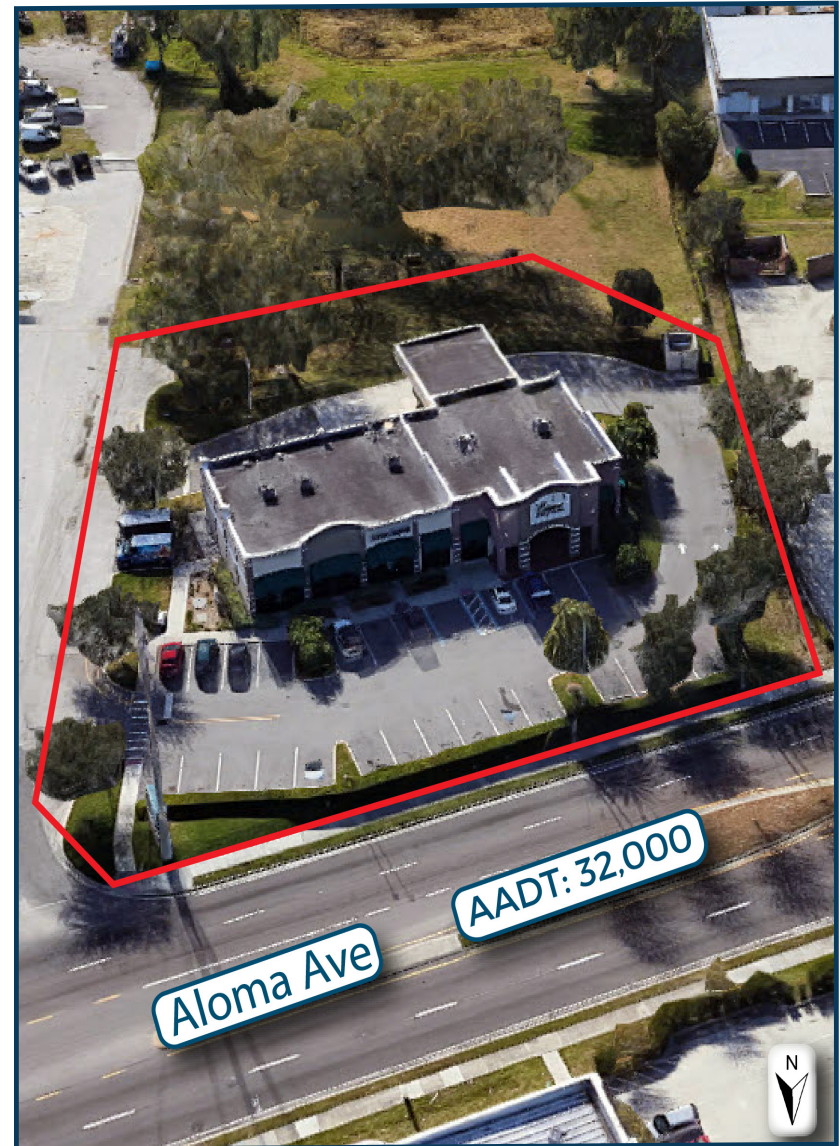




MONUMENT SIGN



AERIAL VIEW





GENERATOR



DRIVE-THRU LANES

