



Building Value in Partnership

**111 Scott Street
Melbourne, FL 32901**

FOR SALE



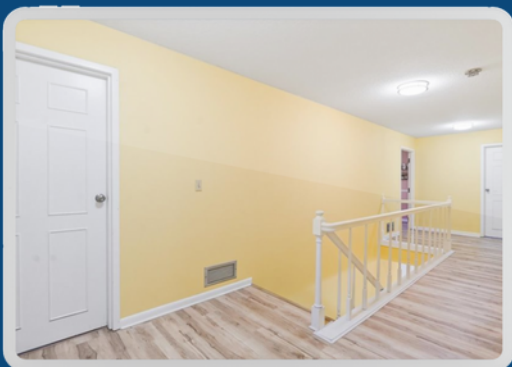
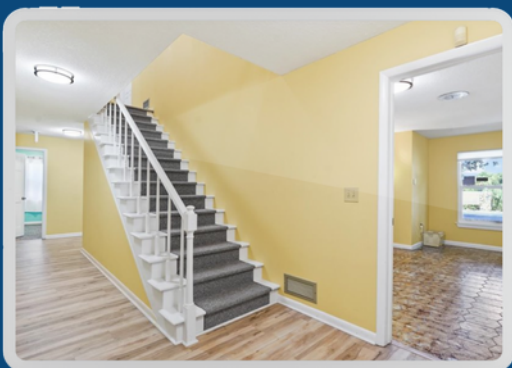
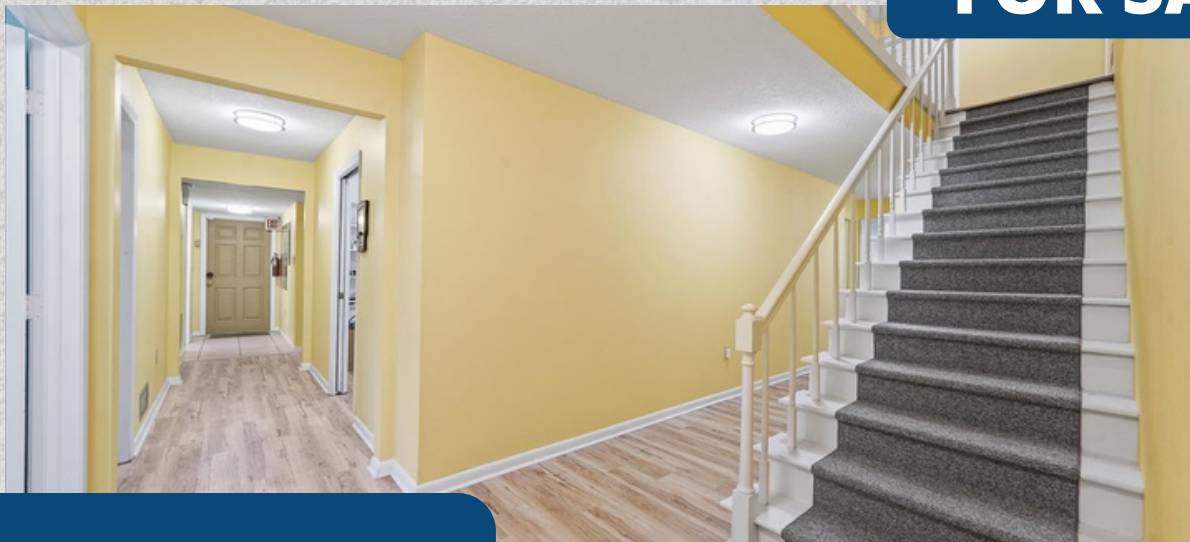
**2-STORY
PROFESSIONAL
OFFICE
BUILDING
IN THE
HEART OF
MELBOURNE**



Building Value in Partnership

**111 Scott Street
Melbourne, FL 32901**

FOR SALE



Features

- .5 Acres, Zoned C-1A Commercial
- 4,948 SF
- 12 Private Offices
- 2 Executive Suite
- 2 Conference Room
- 1 Storage Room
- Kitchenette
- 4 Restrooms
- Large Reception/Waiting/Lobby Area
- Rear Access
- 10k sf of Parking & Asphalt Driveway
- 3 Space Carport
- Dual Road Access

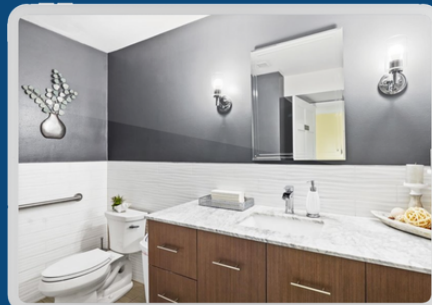
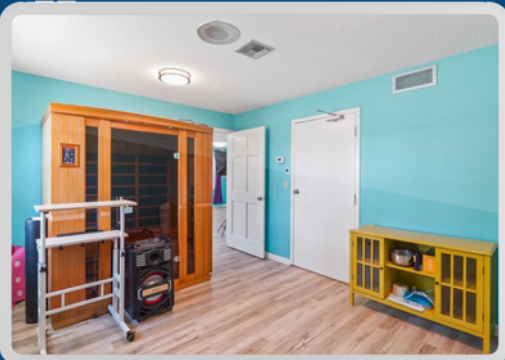
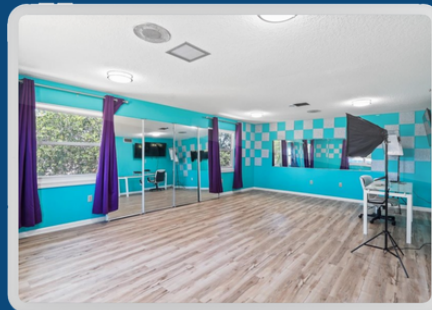
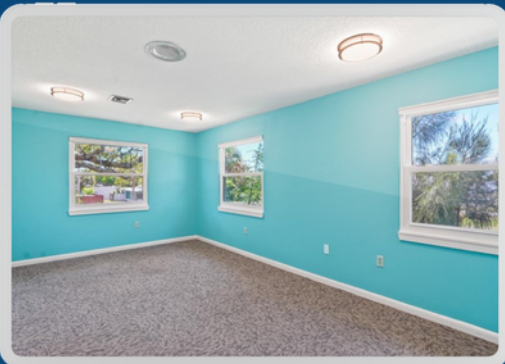


Building Value in Partnership

FIRST FLOOR

111 Scott Street
Melbourne, FL 32901

FOR SALE



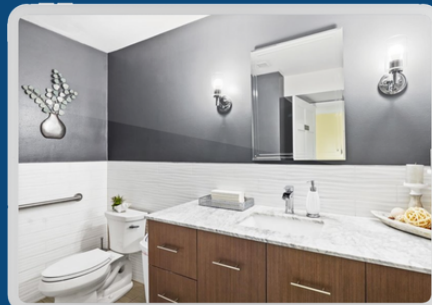
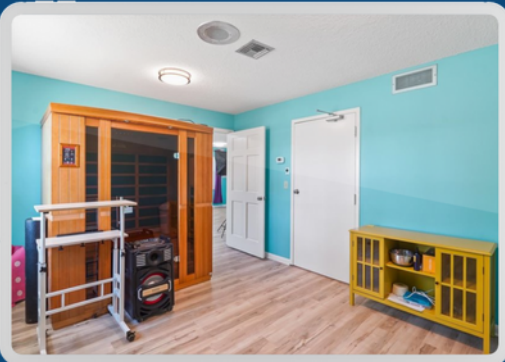
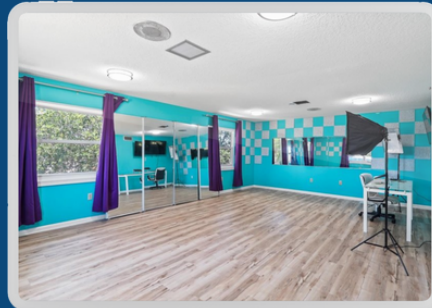


Building Value in Partnership

FIRST FLOOR

111 Scott Street
Melbourne, FL 32901

FOR SALE



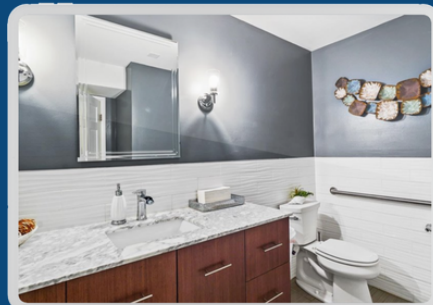
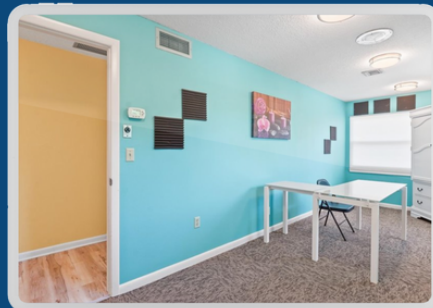
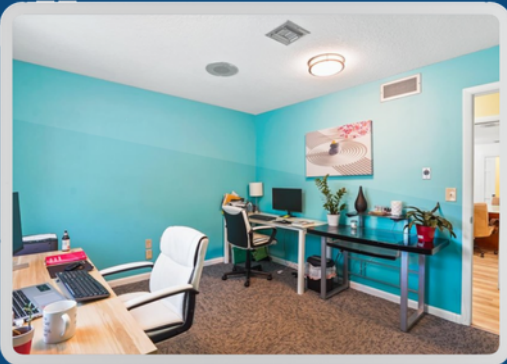


Building Value in Partnership

FIRST FLOOR

111 Scott Street
Melbourne, FL 32901

FOR SALE



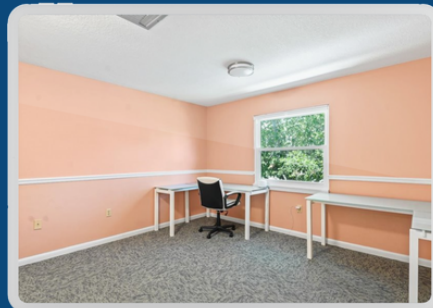
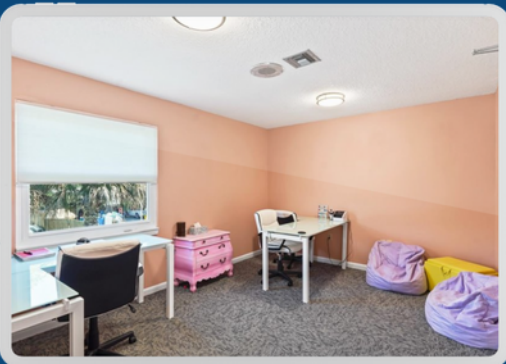


Building Value in Partnership

SECOND FLOOR

111 Scott Street
Melbourne, FL 32901

FOR SALE





Building Value in Partnership

SECOND FLOOR

111 Scott Street
Melbourne, FL 32901

FOR SALE





Building Value in Partnership

**111 Scott Street
Melbourne, FL 32901**

FOR SALE



Prime Commercial Property Centrally Located

Excellent opportunity to locate your business in the heart of Melbourne in a 4,948 sf, 2-story professional office building on 1 acre.



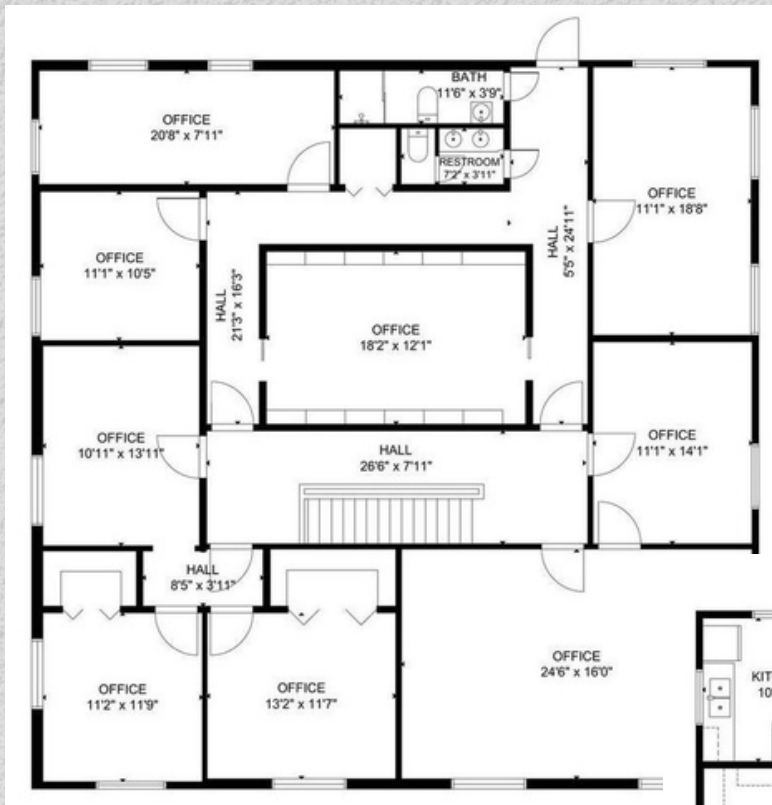


Building Value in Partnership

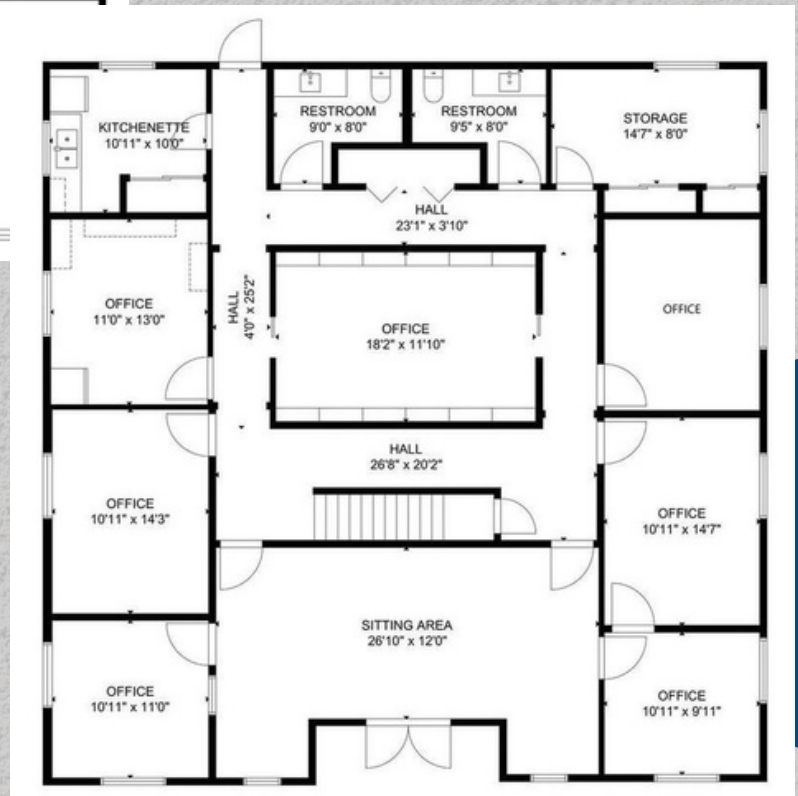
**111 Scott Street
Melbourne, FL 32901**

FOR SALE

1st Floor Flr Plan



2nd Floor Flr Plan

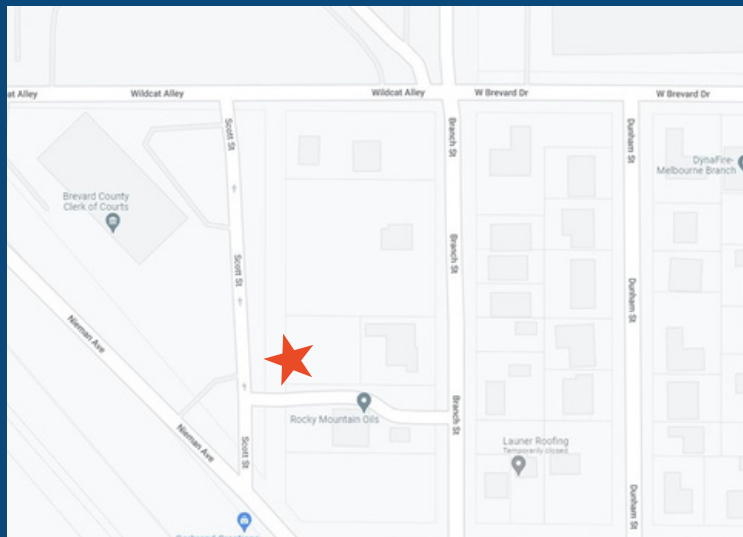
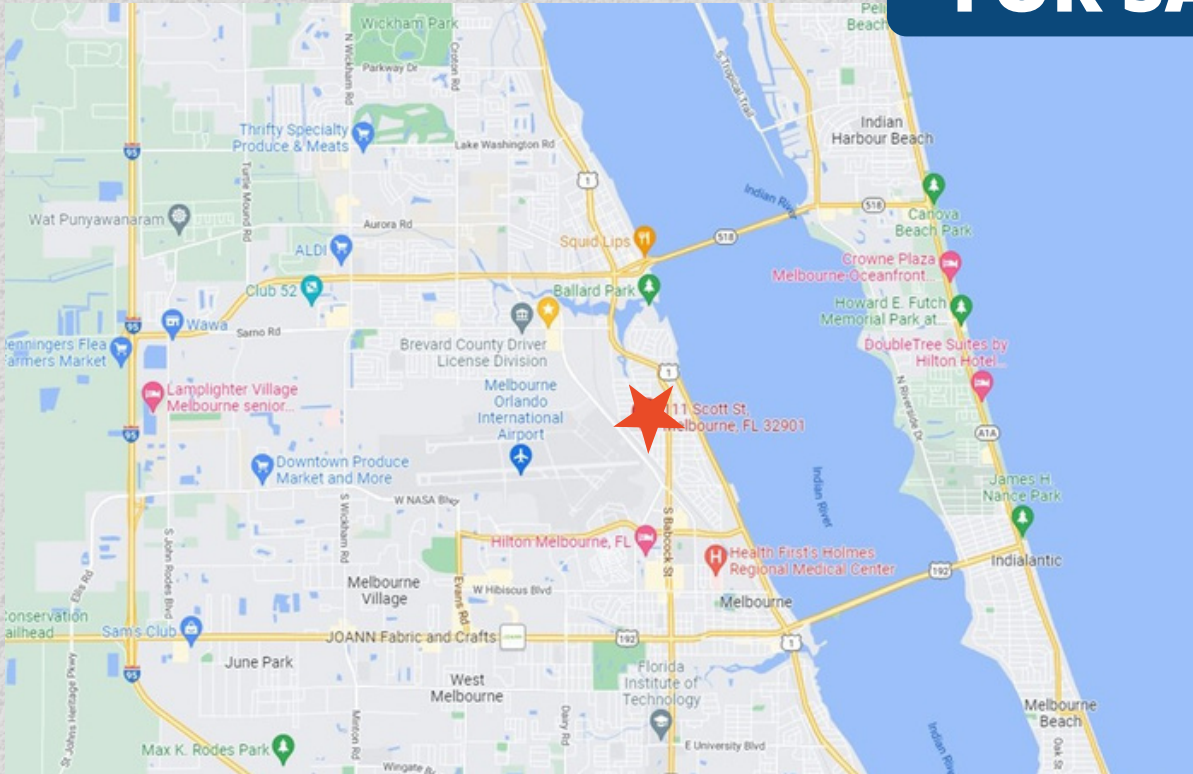




Building Value in Partnership

**111 Scott Street
Melbourne, FL 32901**

FOR SALE



From Babcock, turn west onto Neiman, then north onto Scott Street, property is on your right. Just 1/4 mile to Babcock Street, a little over a 1/2 mile to US Hwy 1 and just under 1.5 miles to the Melbourne International Airport.



Building Value in Partnership

**111 Scott Street
Melbourne, FL 32901**

FOR SALE



Karen D'Alberto, Realtor®
321-622-3196
flst.karen@gmail.com

\$650,000

Realty World Curri Commercial
1097 S. Patrick Drive
Satellite Beach, FL 32937
321-596-5006



CURRICOMMERCIAL.COM

Joel Ludlow, Realtor®
321-288-9537
joel.ludlow@gmail.com

We obtained the information above from sources we believe to be reliable. However, we cannot warrant its accuracy and make no guarantee, warranty or representation about it. It is submitted subject to the possibility of errors, omissions, change of price, rental or other conditions, prior sale, lease or financing, or withdrawal without notice. We include projections, opinions, assumptions or estimates for example only, and they may not represent current or future performance of the property. You and your tax and legal advisors should conduct your own investigation of the property and transaction.