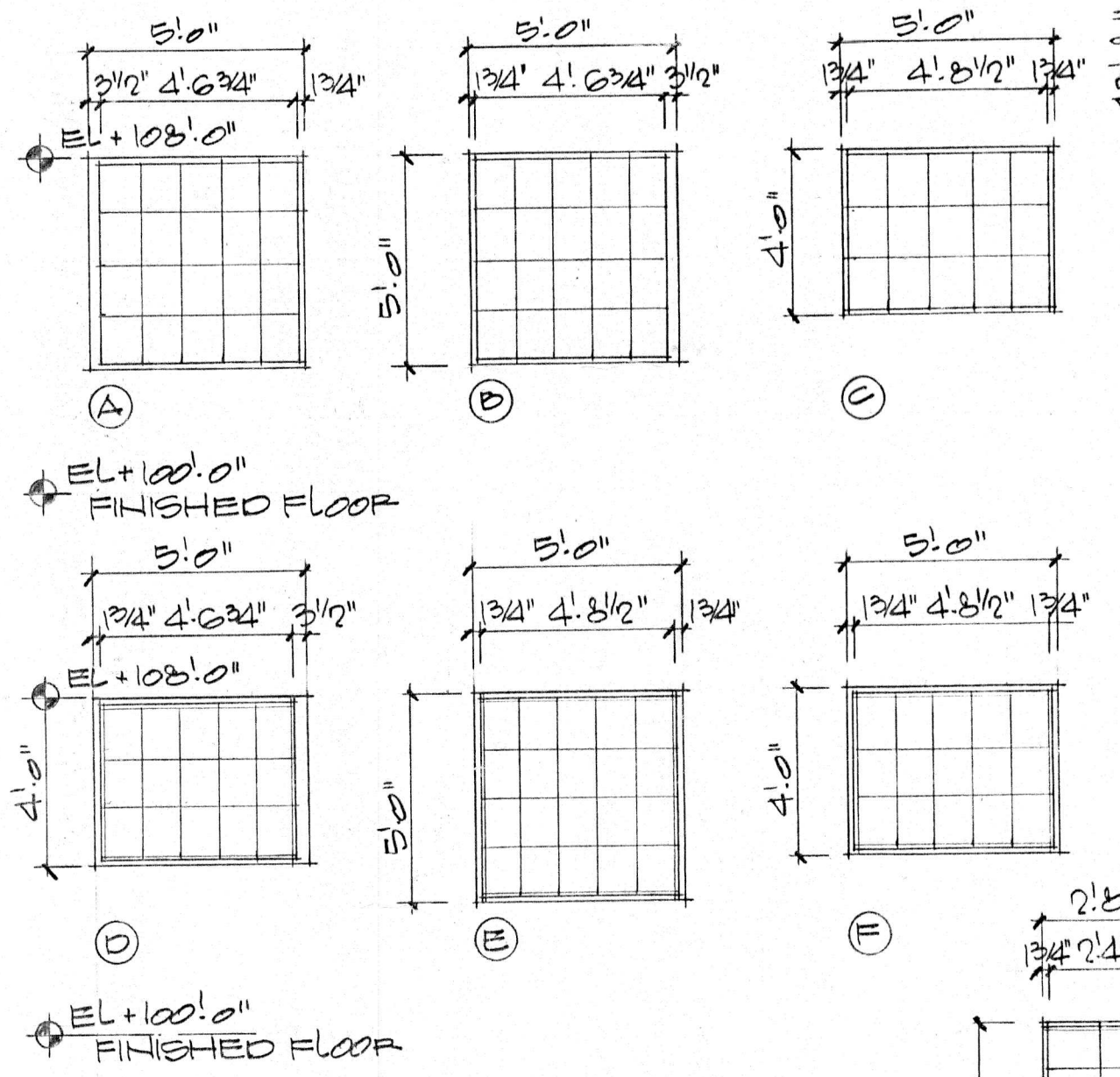
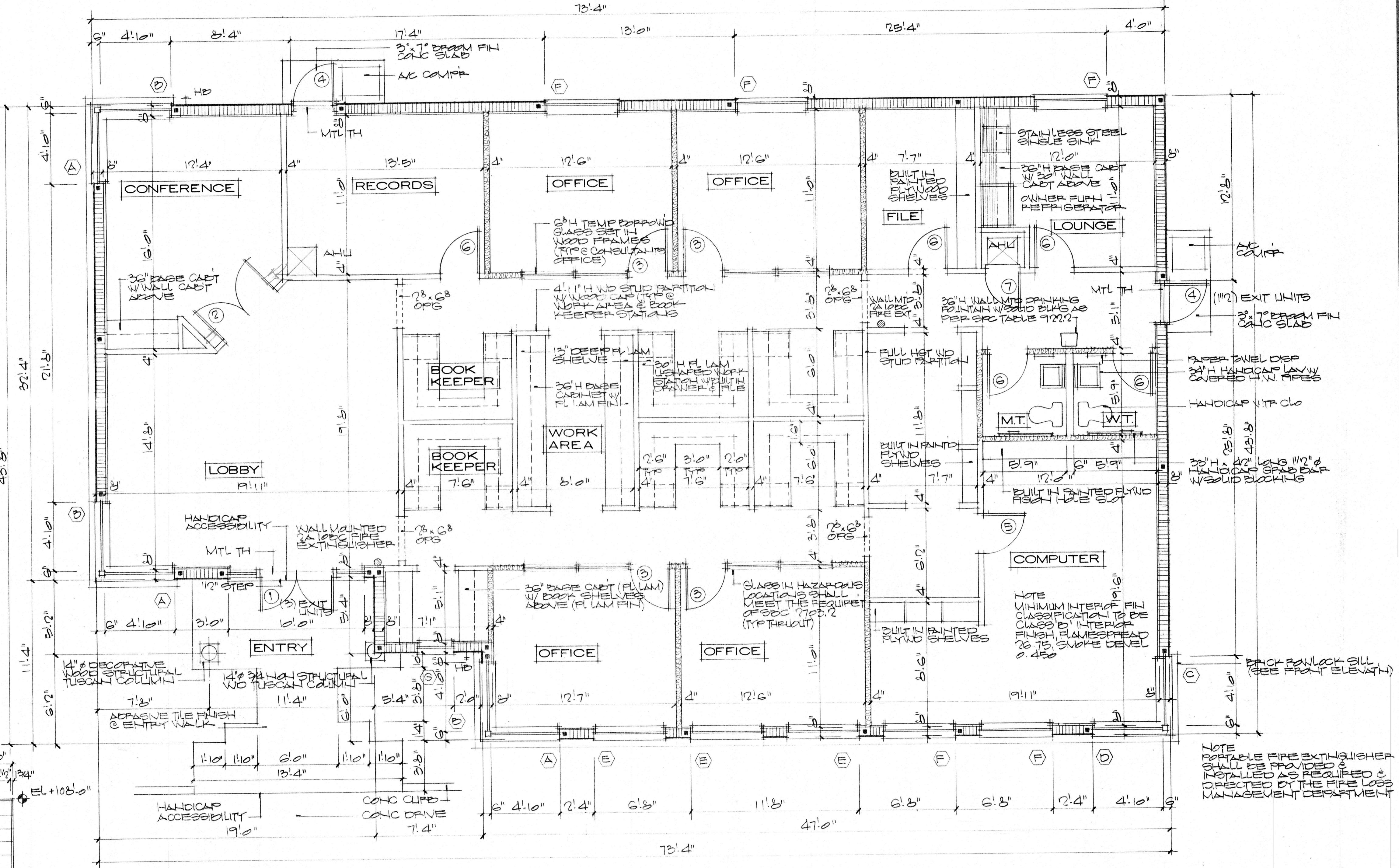


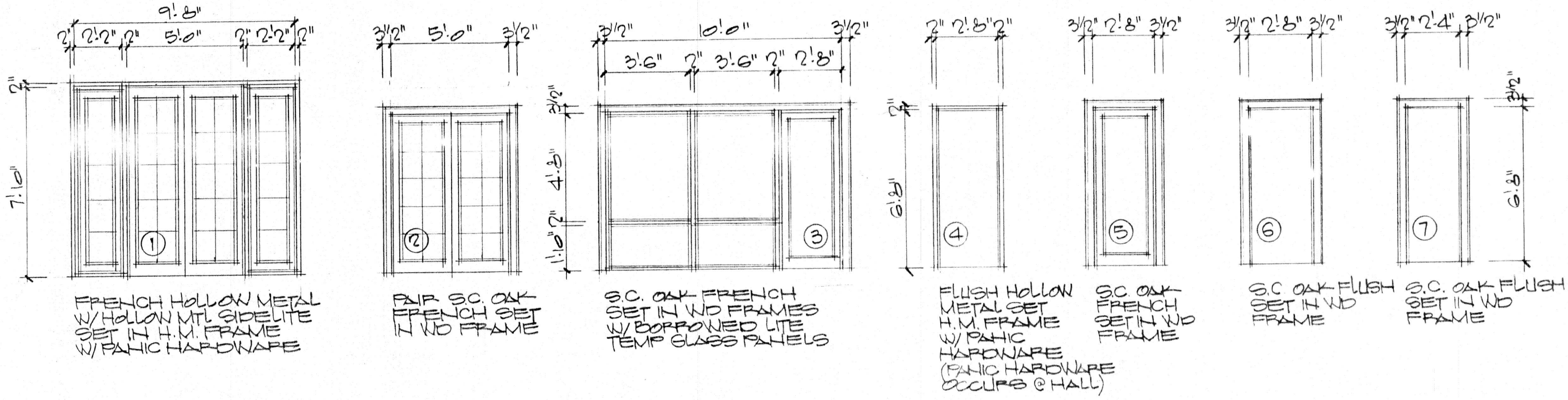
ROOM FINISH SCHEDULE

ROOM NAME	FLOOR	BASE	WALL				CEILING		REMARKS
			NORTH	EAST	SOUTH	WEST	FIN.	HT.	
ENTRY									
LOBBY									
CONFERENCE									
CORRIDOR									
WORK AREA									
BOOK KEEPER									
OFFICE									
RECORDS									
COMPUTER									
FILE ROOM									
LOUNGE									
M.T./W.T.									



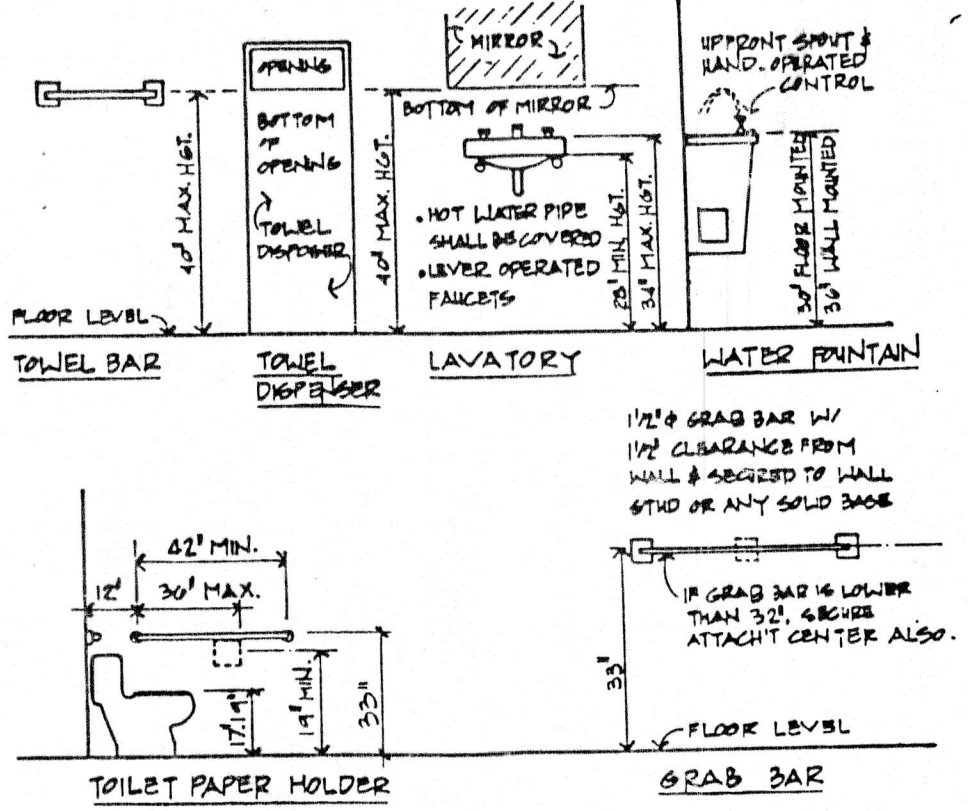
ALL WINDOWS SHOWN TO BE FIXED TINTED INSULATED GLAZING SET IN TINTED ANODIZED ALUMINUM FRAMES

WINDOW TYPES



DOOR TYPES

FLOOR PLAN



HANDICAP MOUNTING HEIGHTS

BUILDING CRITERIA

OCCUPANCY: GROUP 'B' BUSINESS (OFFICE BUILDING)
BLDG CRITERIA: ONE STORY (15'-6" TOP OF RIDGE) 2943 SQ FT TYPE VI CONSTRUCTION UNPROTECTED UNINSULATED
OCCUPANT LOAD: BUSINESS 19/100 #, 2943 # = 30 PEOPLE
EXITS: EXITS REQUIRED: 2 EXITS EXITS PROVIDED: 2 EXITS
CODES: 1988 STANDARD BUILDING CODE 1988 LIFE SAFETY CODE (NFPA 101) FLORIDA STATUTE CHAPTER 553 PART V HANDICAP ACCESSIBILITY REQUIREMENTS
DESIGN CRITERIA: ROOF: TOTAL DESIGN LIVE LOAD: 20 PSF TOTAL DESIGN DEAD LOAD: 24 PSF WIND LOAD: 100 MPH ALLOWABLE SOIL PRESSURE: 2000 PSF

REVISIONS	BY

WINTER PARK DESIGN

221 ORACLE DRIVE • MAITLAND, FLORIDA 32751 • 544-8993

THE P.M. BUILDING
 1752 HOWELL BRANCH ROAD
 ORANGE COUNTY, FLORIDA

DRAWN	RGH
CHECKED	EDJ
DATE	
SCALE	
JOB NO.	2990
SHEET	