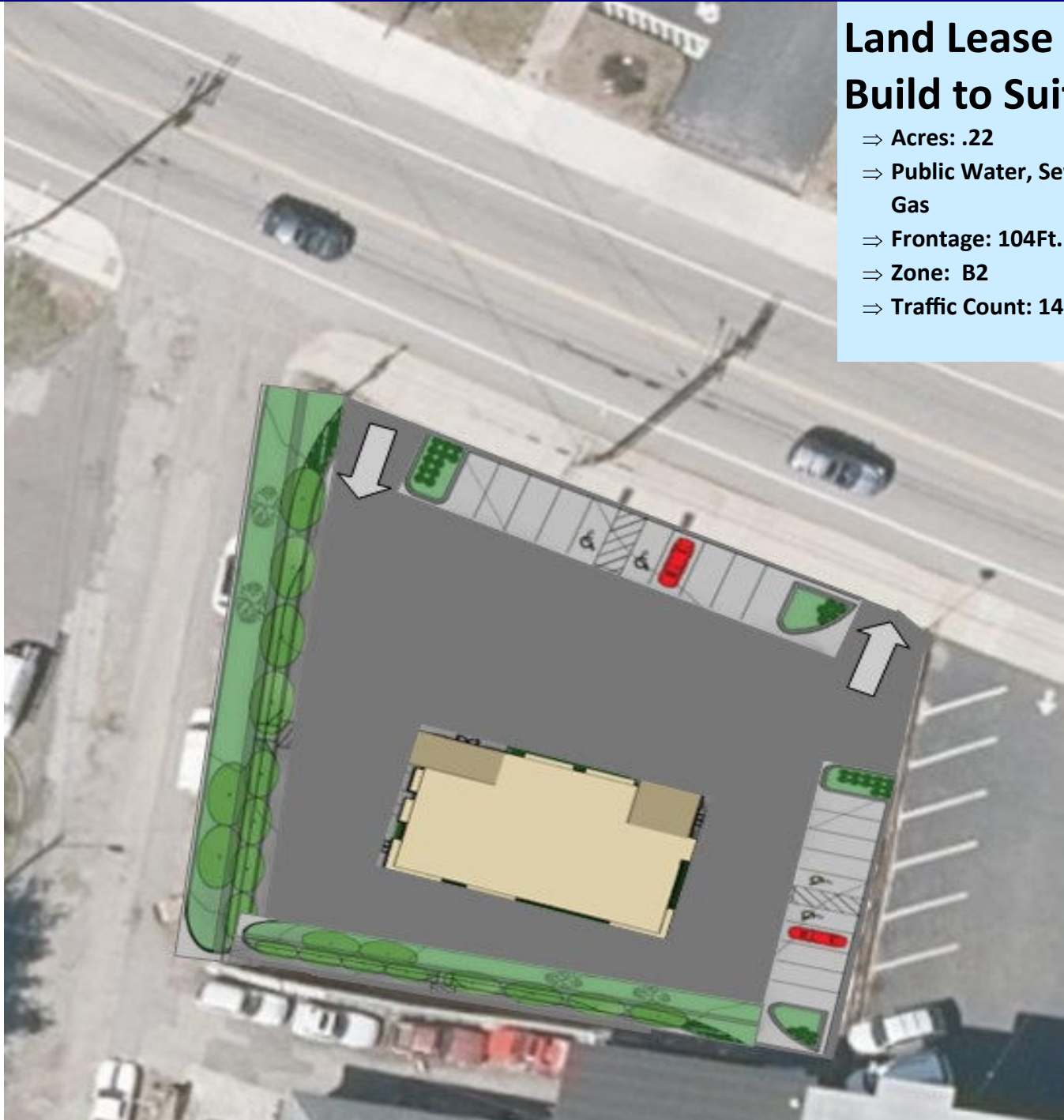


1248 Main St, Willimantic

.22 Acre Parcel in commercial Retail Corridor

Land Lease or Build to Suit

- ⇒ Acres: .22
- ⇒ Public Water, Sewer,
Gas
- ⇒ Frontage: 104Ft.
- ⇒ Zone: B2
- ⇒ Traffic Count: 14,300



LYMAN

REAL ESTATE BROKERAGE & DEVELOPMENT

www.LymanRE.com

RON LYMAN

Main Office:
1160 Boston Post Rd.
Westbrook, CT 06498
Mailing Address:
73 Second Ave.
Westbrook, CT 06498
860-887-5000 x1 Office
860-884-4666 Cell



Demographics	1 MILE	3 MILES	5 MILES	10MILES
Total Population	10,073	26,629	36,874	94,487
Average Household Income	\$49,365	\$65,874	\$81,077	\$100,343

All information stated is from sources deemed reliable and is submitted subject to errors, omissions, changes of other terms and conditions, prior sales, financing or withdrawal without notice. Buyer/Tenant agents will be eligible for a portion of commission only if they have an existing signed representation.