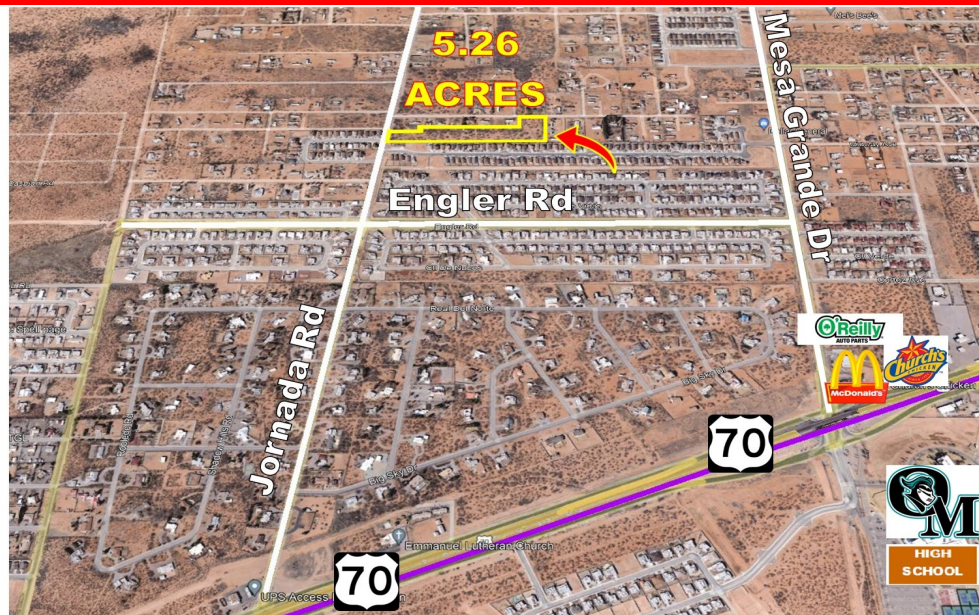


# Saddle Mountain Rd, 5.26 Acres

5070 Saddle Mountain Rd, Las Cruces, NM 88001

**\$250,000**

**5.26 Acres Ideal for development / Investment, Housing, Mobil Home Park. All City Utilities, few blocks from Bataan Memorial West, near schools, stores, new Walmart, easy access to downtown.**



## Views Of Organ Mountains



Homes | Multi-Family | Land | Commercial | Development | Investment Properties



*Ernesto*  
**URANGA**



**575-644-7254**

Office: 575-524-8788 2805 Doral Ct., Las Cruces, NM

[www.ErnestoUranga.com](http://www.ErnestoUranga.com)



Disclaimer: All information deemed reliable but not guaranteed. All properties are subject to prior sale, change or withdrawal. Neither listing broker(s) or information provider(s) shall be responsible for any typographical errors, misinformation, misprints and shall be held totally harmless. Listing(s) information is provided for consumers personal, non-commercial use and may not be used for any purpose other than to identify prospective properties consumers may be interested in purchasing.