

GOMEZ PIÑERO  
ARCHITECTS  
CALL: GUTENBERG # 970  
URS, JARDINES METROPOLITANAS  
SAN JUAN, P.R. 00907  
TEL / FAX (787) 737-6100  
EMAIL: gpi@gozpi.com

CERTIFY:  
*Manuel...*

NOTE:  
THIS DOCUMENT AND ALL INFORMATION CONTAINED HEREIN ARE THE EXCLUSIVE PROPERTY OF GOMEZ PIÑERO ARCHITECTS. NO REPRODUCTION WITHOUT THE EXPRESS WRITTEN CONSENT OF THE DESIGNER. GOMEZ PIÑERO & ASSOC.

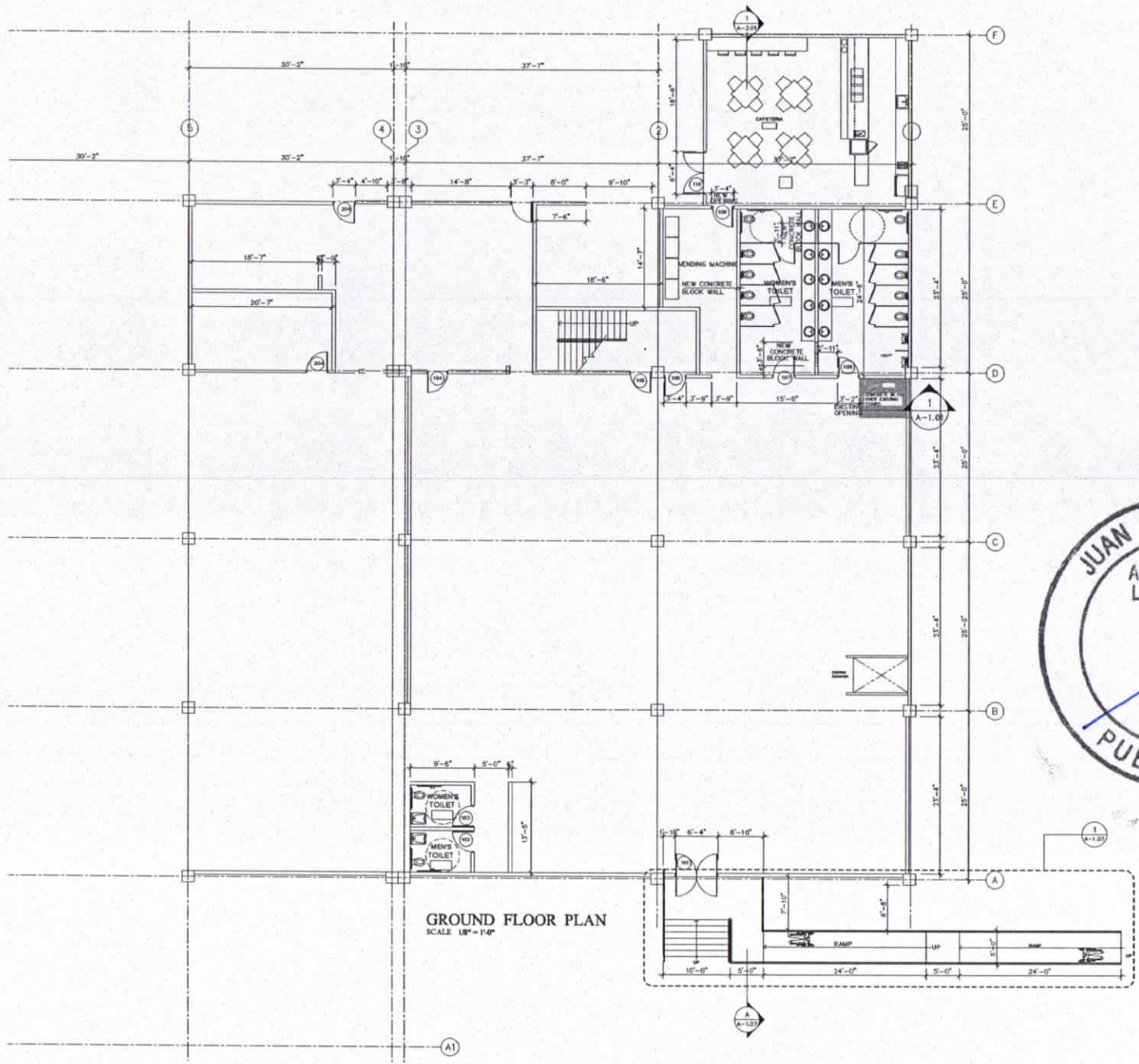
DWG. TITLE: **SITE PLAN**  
PROJECT NUMBER: **SMART LOGISTICS SOLUTIONS REMODELING DWGS.**  
STATE ROAD NUM: **1 K.M. 29.4**  
RIO CAÑAS WARD

REVISIONS	
NO.	DESCRIPTION
1	
2	
3	
4	
5	
6	

PROJECT NAME:  
FILE TITLE:  
DRAWN BY:  
REVIEWED BY:  
PLOT SCALE:  
DATE:

**C-1.01**

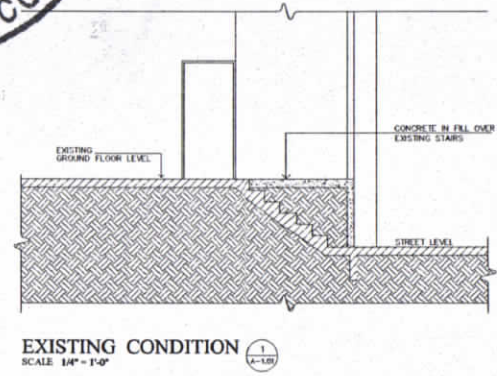




GROUND FLOOR PLAN  
SCALE 1/8" = 1'-0"

- ARCHITECTURAL LEGEND**
- EXISTING CONSTRUCTION
  - CONSTRUCTION TO BE REMOVED
  - STRUCTURAL CONCRETE WALL OR COLUMN
  - CONCRETE BLOCK WALL
  - GYPSUM BOARD WALL
  - SECTION NO. DETAIL DESIGNATION DWG. NO.
  - DETAIL NO. DETAIL DESIGNATION DWG. NO.
  - ELEV. NO. ELEVATION DWG. NO.
  - DOOR DESIGNATION
  - WINDOW DESIGNATION
  - FINISH DESIGNATION
  - N.I.C. NOT INCLUDED IN CONTRACT
  - INDICATES CHANGE IN FLOOR
  - REVISION WHEN INDICATED IN DRAWINGS
  - POINT ELEVATION
  - CHANGE IN FLOOR FINISH
  - F.D. FLOOR DRAIN
  - N.I.C. NOT INCLUDED IN CONTRACT
  - F.F. FINISH FLOOR ELEVATION

**GENERAL NOTES:**  
1- PROVIDE, INSTALL AND /OR BUILD ALL WALLS, PARTITIONS, DOORS AND APPURTENANCES AS SHOWN



EXISTING CONDITION  
SCALE 1/4" = 1'-0"



CALL: OUTENBERG # 770  
URR. JARDINES METROPOLITANAS  
SAN JUAN PR 00927  
TEL / FAX (787) 750-4100  
EMAIL: gpi@gozp.com

CERTIFY:  
*[Signature]*

NOTE:  
THIS DOCUMENT AND ALL INFORMATION DESIGN CONCEPT, DETAILS AND NOTES ARE THE PROPERTY OF THE DESIGNER AND MAY NOT BE COPIED OR REPRODUCED WITHOUT THE WRITTEN PERMISSION OF THE DESIGNER. GOMEZ PIÑERO & ASSOC.

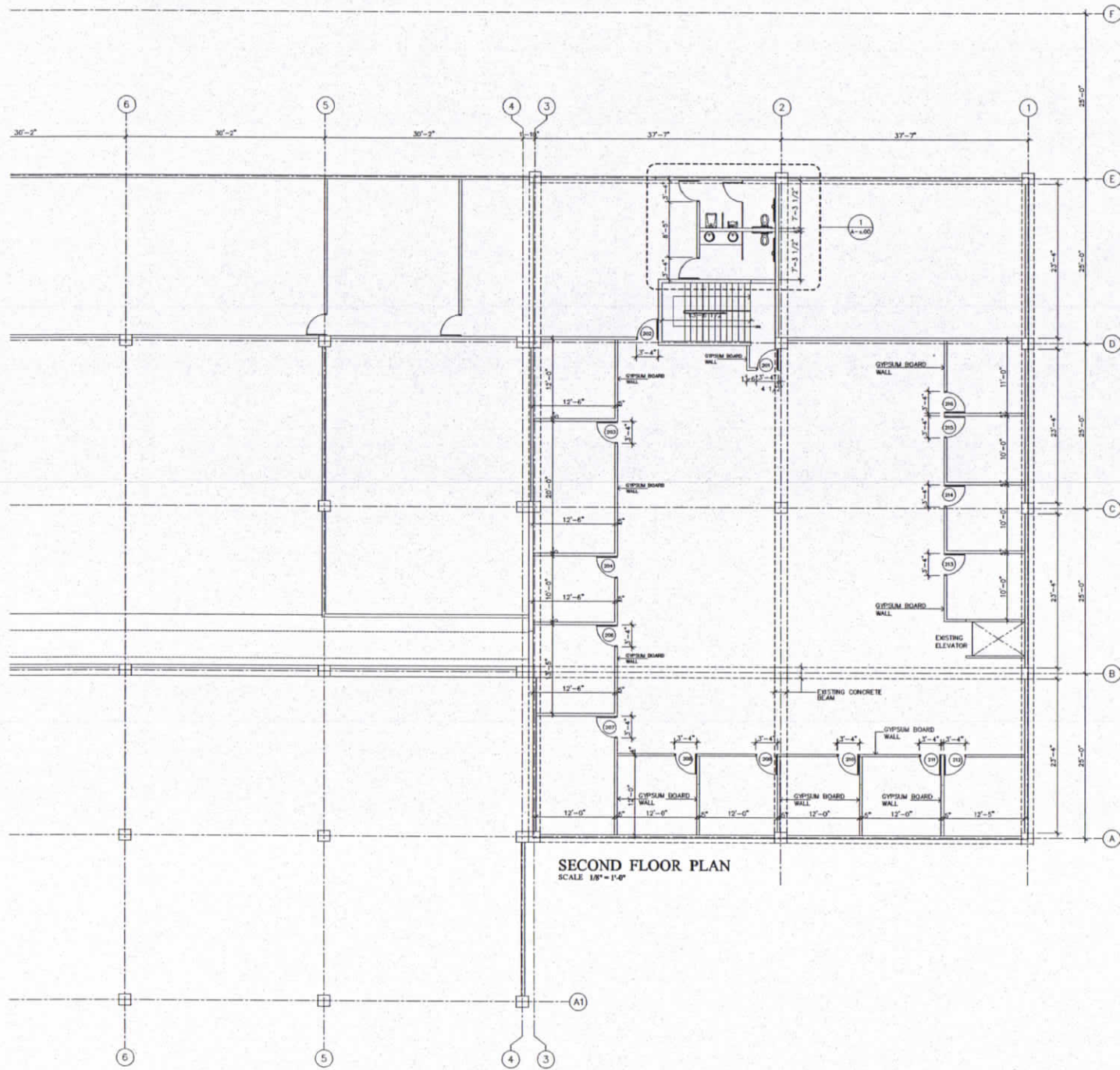
DATE TITLE  
PROPOSED GROUND FLOOR PLAN  
PROJECT / PROVIDOR  
SMART LOGISTICS SOLUTIONS  
REMODELING DWGS.  
STATE ROAD NUM 1 K.M. 29.4  
RIO CANAS WARD

REVISIONS	
NO.	DESCRIPTION

PROJECT NAME  
FILE TITLE  
DRAWN BY  
CHECKED BY  
PLOT SCALE  
DATE

A-1.01





SECOND FLOOR PLAN  
SCALE 1/8" = 1'-0"

- ARCHITECTURAL LEGEND**
- EXISTING CONSTRUCTION
  - CONSTRUCTION TO BE REMOVED
  - STRUCTURAL CONCRETE WALL OR COLUMN
  - CONCRETE BLOCK WALL
  - GYPSUM BOARD WALL
  - SECTION NO. DETAIL DESIGNATION DWG. NO.
  - DETAIL NO. DETAIL DESIGNATION DWG. NO.
  - ELEV. NO. ELEVATION DWG. NO.
  - DOOR DESIGNATION
  - WINDOW DESIGNATION
  - FINISH DESIGNATION
  - NOT INCLUDED IN CONTRACT
  - INDICATES CHANGE IN FLOOR
  - REVISION WHEN INDICATED IN DRAWINGS
  - POINT ELEVATION
  - CHANGE IN FLOOR FINISH
  - FLOOR DRAIN
  - NOT INCLUDED IN CONTRACT
  - FINISH FLOOR ELEVATION

**GENERAL NOTES:**  
1- PROVIDE, INSTALL AND /OR BUILD ALL WALLS, PARTITIONS, DOORS AND APPURTENANCES AS SHOWN



**GOMEZ PIÑERO**  
ARCHITECT & ENGINEER  
REGISTERED ARCHITECT

CALL: GUTENBERG # 870  
URE, JARDINES METROPOLITANAS  
SAN JUAN PR 00927  
TEL / FAX (787) 700-4180  
EMAIL: gpi@cc@gnpi.com

CERTIFY:

*[Signature]*

NOTE:  
THIS DOCUMENT AND ALL INFORMATION DESIGN CONCEPT, DETAILS AND NOTES ARE THE PROPERTY OF THE DESIGNER AND MAY NOT BE COPIED OR REPRODUCED WITHOUT THE EXPRESS WRITTEN CONSENT OF THE DESIGNER. GOMEZ PIÑERO & ASSOC.

DATE TITLE: PROPOSED SECOND FLOOR PLAN  
PROJECT / PROPOR: SMART LOGISTICS SOLUTIONS REMODELING DWGS.  
STATE ROAD NUM 1 K.M. 29.4  
RIO CANAS WARD

REVISIONS	
NO.	DESCRIPTION
1	
2	
3	
4	
5	

PROJECT NO.:  
FILE TITLE:  
DRAWN BY:  
REVIEWED BY:  
PLOT SCALE:  
DATE:

A-1.02