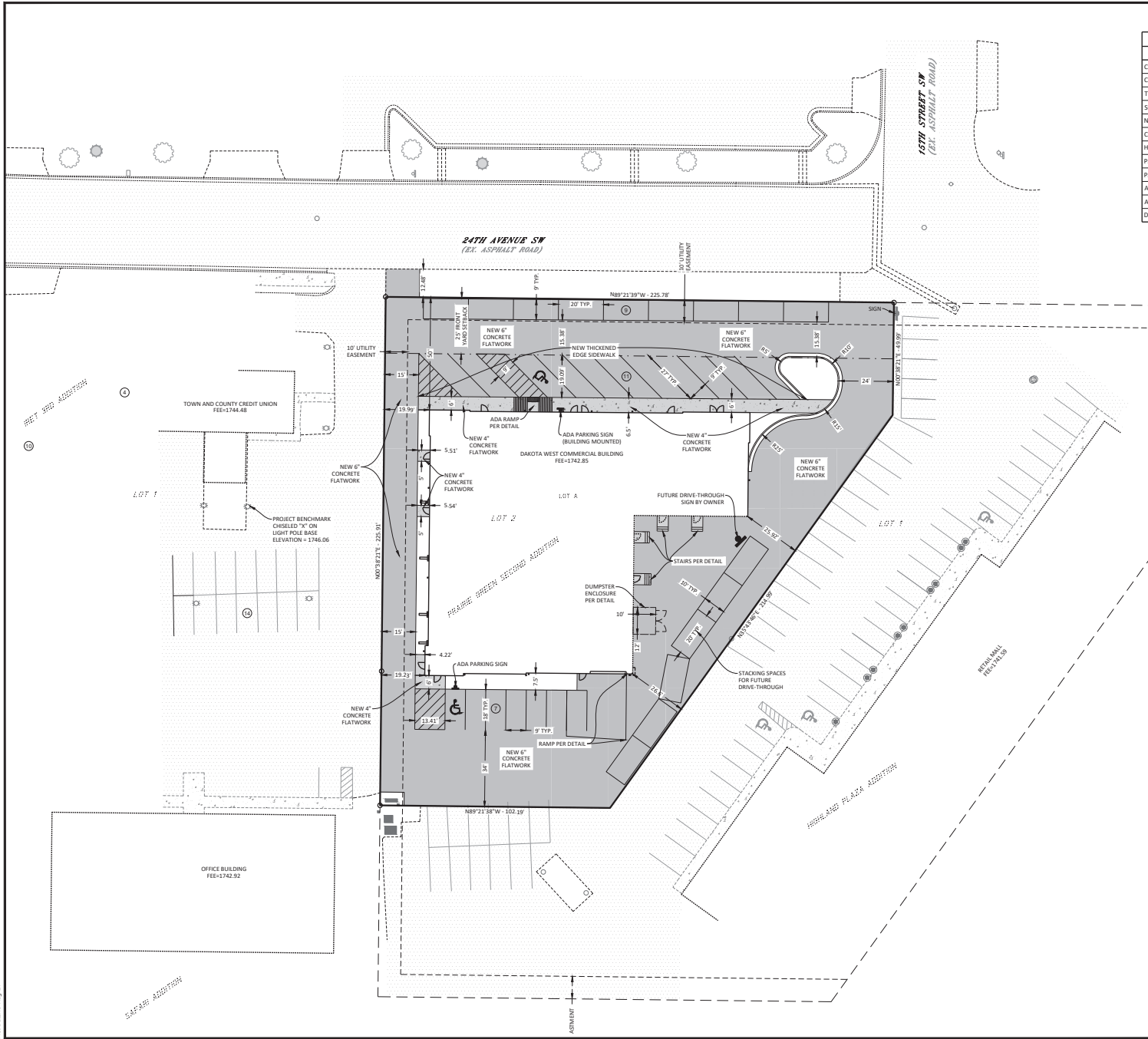


file:location:Z:\lowry\shared\files\projects\2020\30115 - EAPC - Dakota West - Minot, ND\Drawings\30115_Project\Design\30115_C.dwg
 Plot Date: 04/09/21



ESTIMATED SITE QUANTITIES		
ITEM	QUANTITY	UNIT
CONCRETE FLATWORK - 4"	161	SY
CONCRETE FLATWORK - 6"	2,684	SY
THICKENED EDGE SIDEWALK	173	LF
SUBGRADE PREPARATION	2,796	SY
NDDOT GEOSYNTHETIC FABRIC TYPE R1	2,796	SY
CLASS 5	466	CY
HIGHBACK CURB & GUTTER	119	LF
PAVEMENT MARKING - PAINTED 4" LINE	1,253	LF
PAVEMENT MARKING - ADA MESSAGE	2	EA
ADA PARKING SIGN	2	EA
ADA TRUNCATED DOME PANEL	10	SF
DUMPSTER ENCLOSURE	1	LS

EAPC

TEL: 701.839.4547 FAX: 701.839.4545
 300 3rd Avenue SW, Suite A, Minot ND 58701

Grand Forks ND Wilson ND Bismarck ND
 Winton ND Minot ND
 Bismarck ND
 Bismarck ND
 Bismarck ND

www.eapc.com

LOWRY
 ENGINEERING

5306 51ST AVE S - SUITE A
 FARGO, NORTH DAKOTA 58104

CLIENT
WILLY FIELHABER

PROJECT DESCRIPTION
DAKOTA WEST PLAZA

CITY **MINOT**
 STATE **ND**

ISSUE DATES

CD CONSTRUCTION DOCUMENTS 8/16/2021

MARK DESCRIPTION DATE

PROJECT NO: 20205570
 DRAWN BY: HJP
 CHECKED BY: AJT
 COPYRIGHT:

All plans, specifications, computer files, field data, notes and other documents and instruments prepared by EAPC or instruments of service shall remain the property of EAPC. EAPC shall retain all copyright, patent and other intellectual rights, including the right to reproduce.

DRAWING TITLE
OVERALL SITE PLAN

C400

CALL BEFORE YOU DIG
 NORTH DAKOTA
 UTILITIES UNDERGROUND LOCATION SERVICE
 1-800-795-0555