



**AVAILABLE FOR LEASE JUNE 1, 2022**



# TAMPA EAST INDUSTRIAL PARK

1201 Old Hopewell Rd | Tampa, FL 33619

**27,547 SF | SUITE 1201-9**

## PROPERTY HIGHLIGHTS

- Available SF: +/-27,547 SF
- Office SF: +/- 1,500
- Clear Height: 22'
- Loading: 4 Dock High Doors
- Column Spacing: 36' x 40'
- Building Depth: 145'-289'
- Electrical: 3 Phase / 240 Volt / 200 Amp
- Sprinkler: Wet Pipe

1201 Old Hopewell Road has superior access to Interstate-4, Interstate-75, State Road 60 and Highway 301.

The location, just north of the intersection of Highway 301 and SR 60, is at the center of the heaviest concentration of distribution space in the Tampa Bay area, and is recognized as the premier distribution location within the Tampa industrial market.

**JESSICA MIZRAHI, SIOR**  
 Director  
 +1 813 804 0886  
 Jessica.mizrahi@cushwake.com

One Tampa City Center, Suite 3300  
 Tampa, FL 33602  
 Main +1 813 223 6300  
 cushmanwakefield.com

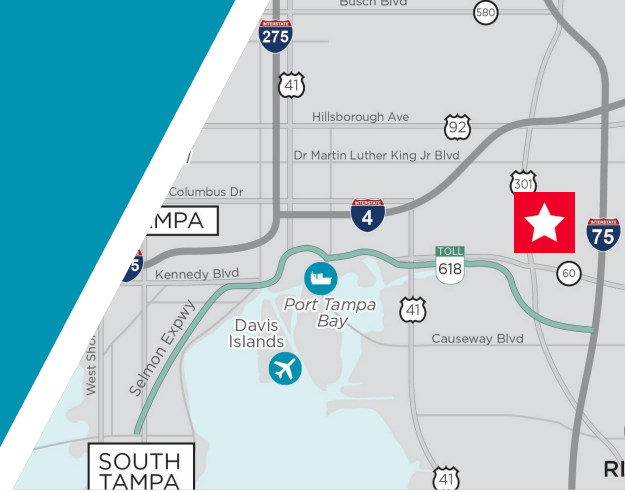


©2020 Cushman & Wakefield. All rights reserved. The information contained in this communication is strictly confidential. This information has been obtained from sources believed to be reliable but has not been verified. No warranty or representation, express or implied, is made as to the condition of the property (or properties) referenced herein or as to the accuracy or completeness of the information contained herein, and same is submitted subject to errors, omissions, change of price, rental or other conditions, withdrawal without notice, and to any special listing conditions imposed by the property owner(s). Any projections, opinions or estimates are subject to uncertainty and do not signify current or future property performance.

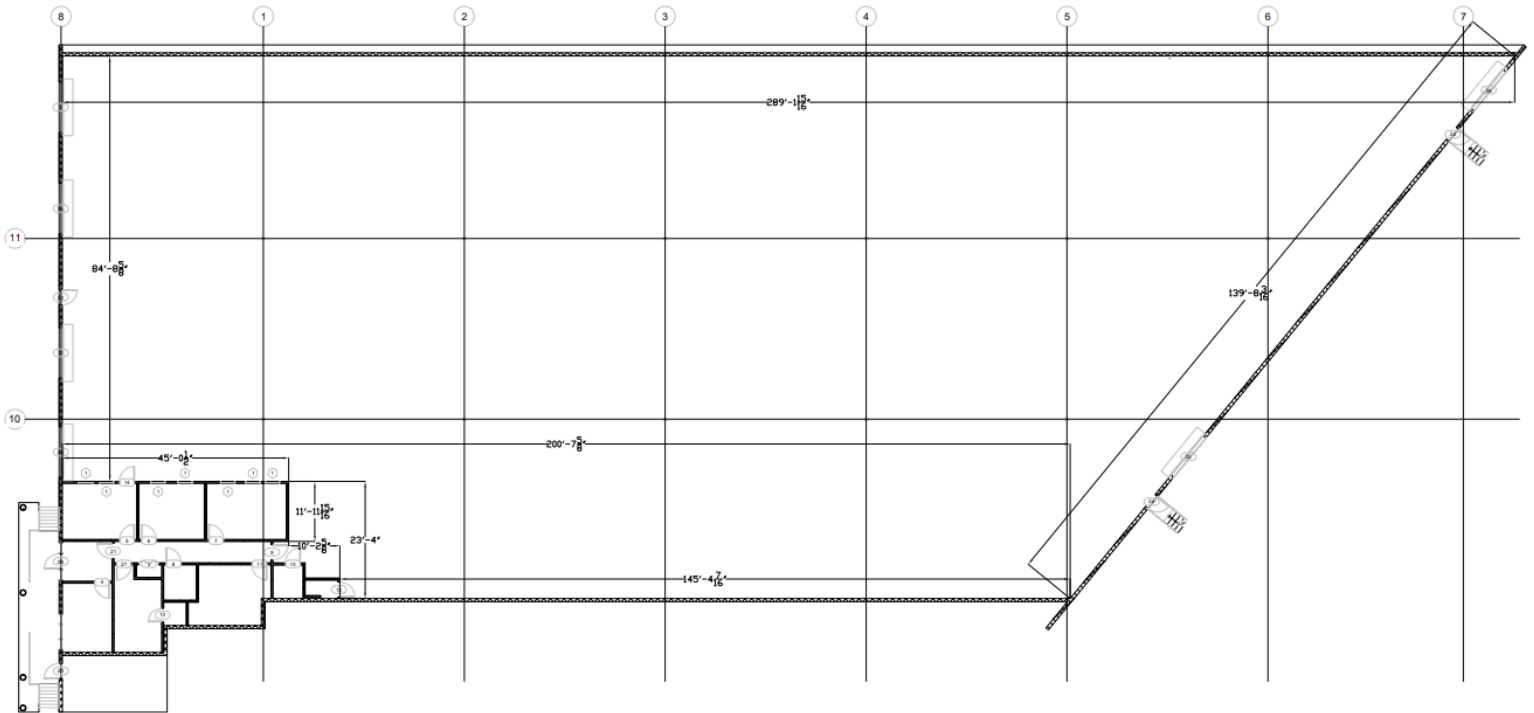
# TAMPA EAST INDUSTRIAL PARK

1201 Old Hopewell Rd | Tampa, FL 33619

**27,547 SF | SUITE 1201-9**



## FLOOR PLAN



**JESSICA MIZRAHI, SIOR**  
 Director  
 +1 813 804 0886  
 Jessica.mizrahi@cushwake.com