

Campbell Property Management Building Space for Lease

For Lease \$15.00 Gross
3500 Gateway Drive
Pompano Beach, FL 33069



FOR LEASE	Suite 204 1,201 RSF Total Building 15,599 Sq. Ft. on .86 Acres
DESCRIPTION	Well maintained office suites for lease located close to Palm Aire in Gateway Industrial Center in Pompano Beach. Prominent features include great natural light with floor to ceiling glass, abundant parking and on-site management. Conveniently located between the Florida Turnpike and I-95.
VIDEO TOUR	https://www.youtube.com/embed/e_1CqdpsQ4M?rel=0
LOCATION	Located on South Side of Gateway Drive just East of SW 36 Ave and North of W. McNab Rd
PRICING	Lease rate is \$15.00 Gross. 15% Common Area Factor. Tenant pays own electric.
YEAR BUILT	1987
PARKING	57 Surface Spaces are available; Ratio of 3.65/1,000 SF
ZONING/ FOLIO	I-1 Pompano Beach 4942 04 32 0017

Disclaimer: This offering subject to errors, omissions, prior sale or withdrawal without notice.

1233 E. Hillsboro Blvd
Deerfield Beach, FL
33441

954.427.8686 T.
954.427.0117 F.

CAMPBELL & ROSEMURGY
COMMERCIAL REAL ESTATE

John D. McQuestion

john@johnmcquestion.com • 561-706-7721 (cell)

www.johnmcquestion.com

Location Map

For Lease \$15.00 Gross
3500 Gateway Drive
Pompano Beach, FL 33069



Disclaimer: This offering subject to errors, omissions, prior sale or withdrawal without notice.

CAMPBELL & ROSEMURGY
COMMERCIAL REAL ESTATE

FOR MORE INFORMATION:

John D. McQueston

john@johnmcqueston.com • 561-706-7721 (cell)

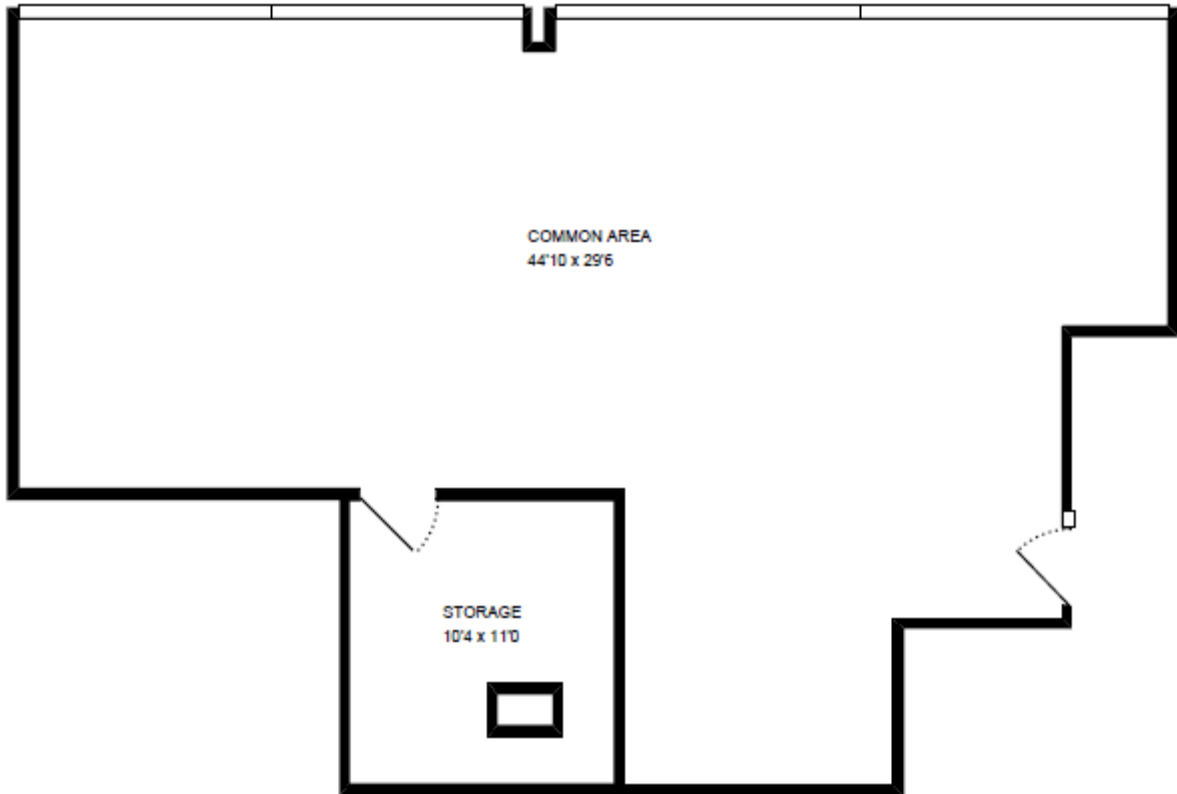
www.johnmcqueston.com

1233 E. Hillsboro Blvd
Deerfield Beach, FL 33441

954.427.8686 T.
954.427.0117 F.

Suite 204 Floor Plan 1,201 RSF

For Lease \$15.00 Gross
3500 Gateway Drive
Pompano Beach, FL 33069



Disclaimer: This offering subject to errors, omissions, prior sale or withdrawal without notice.

CAMPBELL & ROSEMURGY
COMMERCIAL REAL ESTATE

FOR MORE INFORMATION:

John D. McQueston

john@johnmcqueston.com • 561-706-7721 (cell)

www.johnmcqueston.com

1233 E. Hillsboro Blvd
Deerfield Beach, FL 33441

954.427.8686 T.
954.427.0117 F.