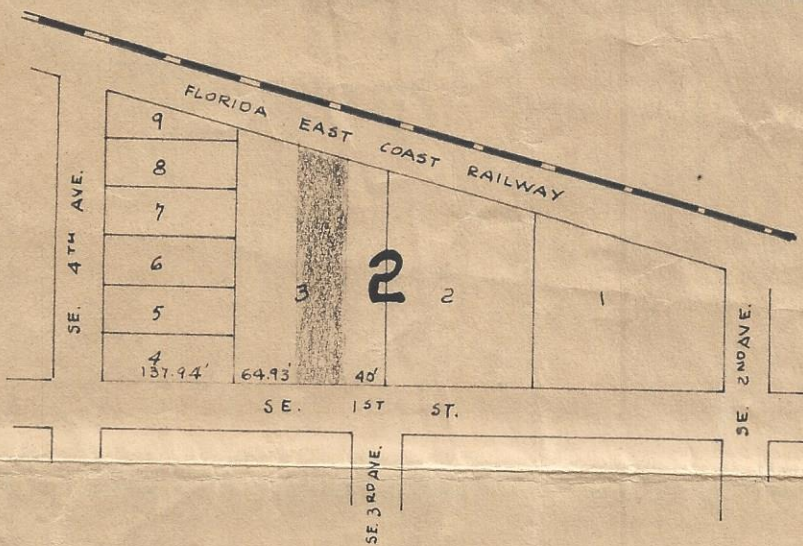


MCLAUGHLIN ENGINEERING CO.

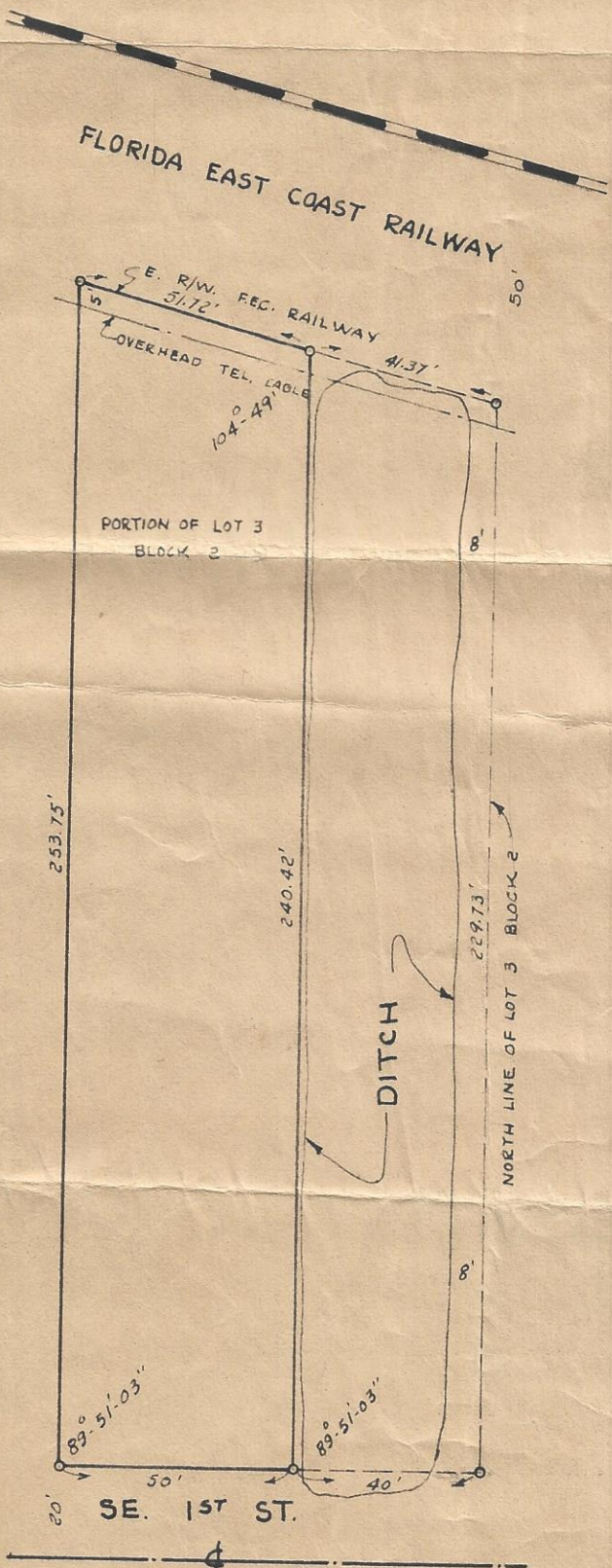
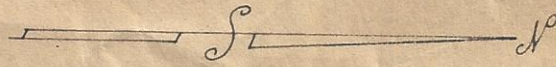
ENGINEERS - SURVEYORS

400 N. E. 3RD AVENUE

FORT LAUDERDALE, FLORIDA



O INDICATES MARKER
SCALE 1" = 40'



CERTIFICATE OF SURVEY

The South 50 feet of the North 90 feet of Lot 3, Block 2, T. H. JACKSON'S ADDITION TO DEERFIELD, according to the plat thereof recorded in Plat Book 2, Page 64, of the public records of Palm Beach County, Florida.

DEERFIELD BEACH,
PALM BEACH COUNTY, FLORIDA

I hereby certify that I have this day completed a survey of the above described premises; that markers have been set as indicated and that this drawing is a true and correct delineation thereof.

Dated at Fort Lauderdale, Florida,
this 9th day of September, 1957.

McLaughlin Engineering Co.

By: A. C. Fish
Registered Land Surveyor No. 1203
State of Florida

FIELD BOOK No. 379-28

JOB ORDER No. A-4955

DRAWN BY E.G.

CHECKED BY