

Lowest Priced Residential Land in Pioneer Grove

For Sale \$149,000
154 SE 2nd Court
Deerfield Beach, FL 33441



FOR SALE	.143 Acres or 6,231 Sq. Ft. Property		
DESCRIPTION	This 6,231 sq. ft. property is centrally in the new Pioneer Grove section of Deerfield Beach just east of Dixie Hwy. The LAC Zoning is intended to encourage and promote development that facilitates a coordinated and balanced mix of land uses, including residential, retail, office and certain types of commercial, governmental and recreation uses. Proposed density would be 18 units per acre. Additional .5028 adjacent property across the street also available for \$649,000.		
PROPERTY VIDEO	https://www.youtube.com/embed/rdZ3FmMwfRw?rel=0		
LOCATION	NW corner of SE 2 nd Ct. & SE 1 Ter.		
PRICING	\$149,000 or \$23.91/ Sq. Ft. Property.		
ZONING/ FOLIO	LAC Pioneer Grove 4843-06-06-0330		
DEMOGRAPHICS 2022		1 mile	3 mile
	HH Population:	14,525	59,609
	Average HH Income:	\$59,319	\$53,962
			5 mile
			127,636
			\$53,711

Disclaimer: This offering subject to errors, omissions, prior sale or withdrawal without notice.

CAMPBELL & ROSEMURGY
COMMERCIAL REAL ESTATE

FOR MORE INFORMATION:

John D. McQueston

john@johnmcqueston.com • 561-706-7721 (cell)

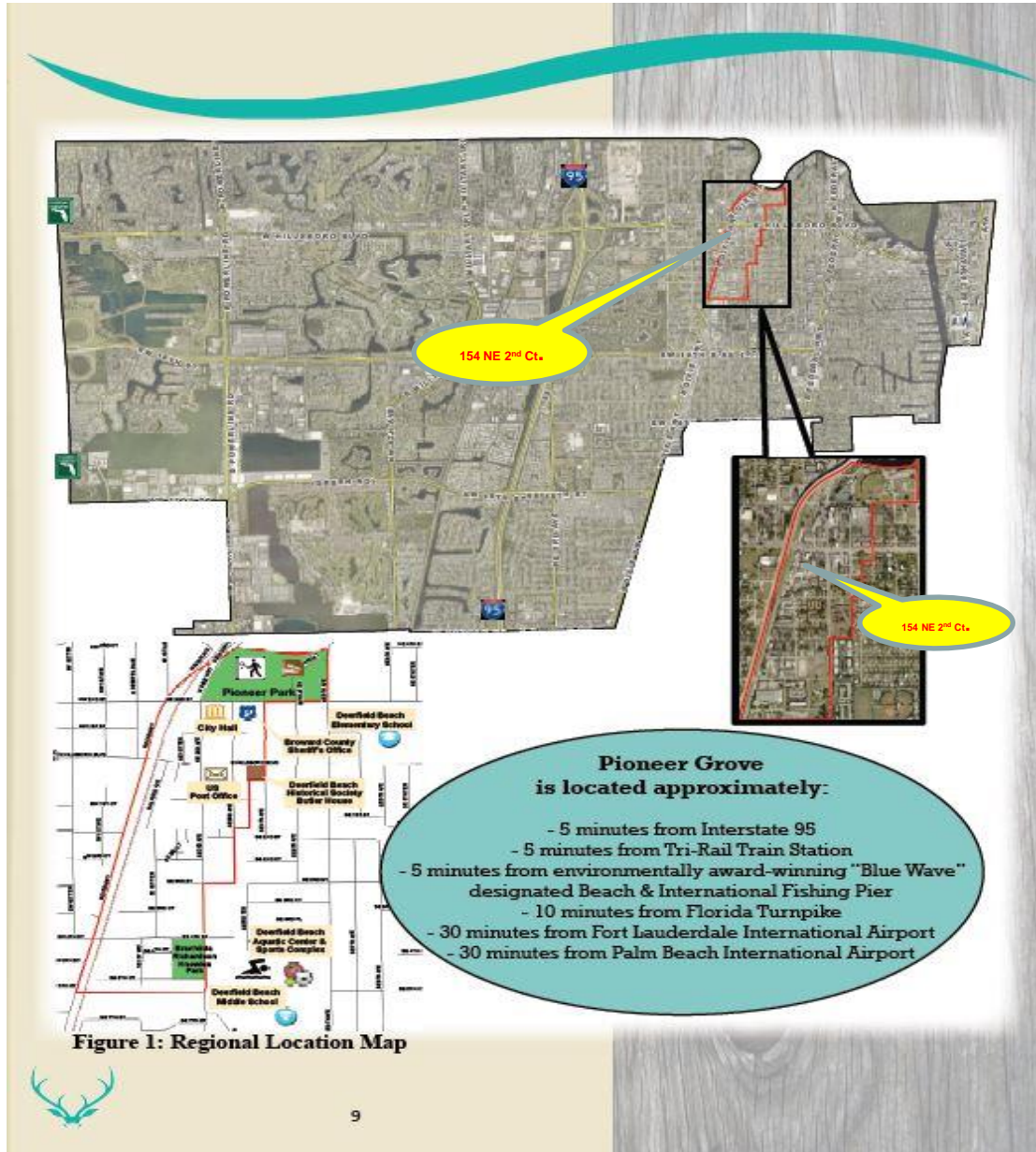
www.johnmcqueston.com

1233 E. Hillsboro Blvd
Deerfield Beach, FL 33441

954.427.8686 T.
954.427.0117 F.

Location Map

For Sale \$149,000
154 SE 2nd Court
Deerfield Beach, FL 33441



Disclaimer: This offering subject to errors, omissions, prior sale or withdrawal without notice.

CAMPBELL & ROSEMURGY
COMMERCIAL REAL ESTATE

FOR MORE INFORMATION:

John D. McQuestion

john@johnmcquestion.com • 561-706-7721 (cell)

www.johnmcquestion.com

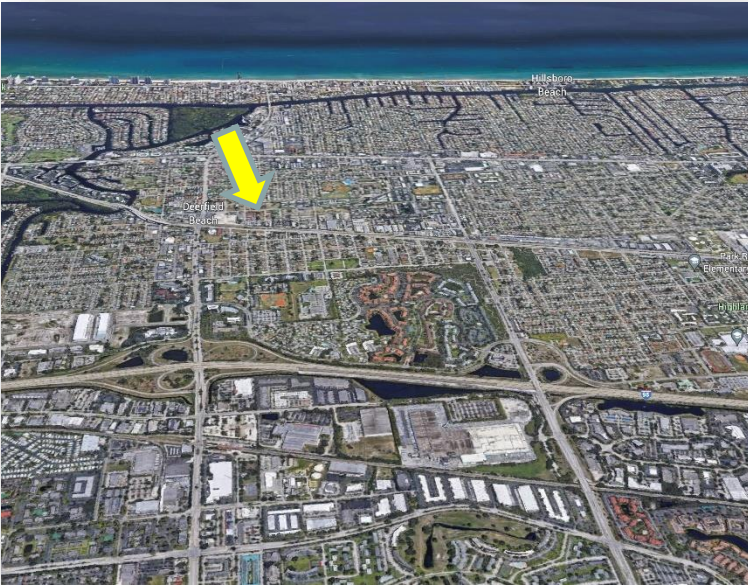
1233 E. Hillsboro Blvd
Deerfield Beach, FL 33441

954.427.8686 T.
954.427.0117 F.

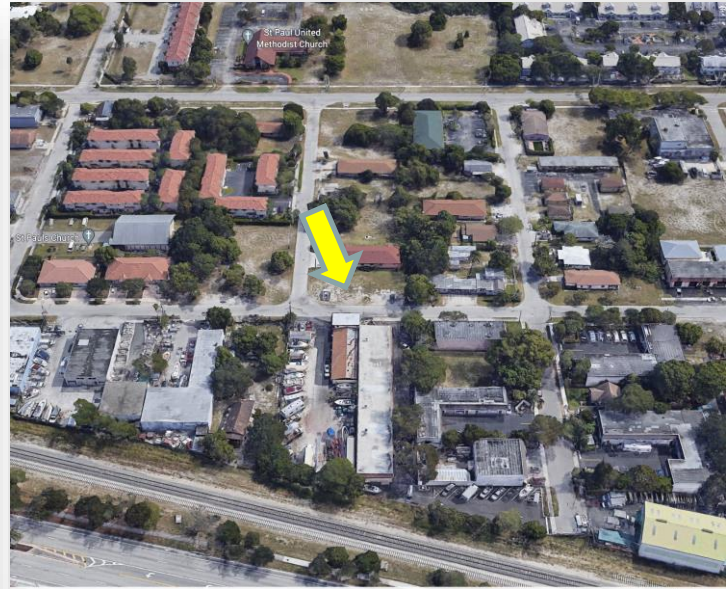
Additional Photos

For Sale \$149,000
154 SE 2nd Court
Deerfield Beach, FL 33441

East Aerial View



Aerial View



Street View



Zoning Aerial



Disclaimer: This offering subject to errors, omissions, prior sale or withdrawal without notice.

CAMPBELL & ROSEMURGY
COMMERCIAL REAL ESTATE

FOR MORE INFORMATION:

John D. McQuestion

john@johnmcquestion.com • 561-706-7721 (cell)

www.johnmcquestion.com

1233 E. Hillsboro Blvd
Deerfield Beach, FL 33441

954.427.8686 T.
954.427.0117 F.