

For Sale: ±12,004 SF Retail Showroom

1892 SE Federal Hwy, Stuart, FL 34994

NAISouthcoast



Presented by

Stuart Duffin, P. A., SIOR, CCIM

Sales Associate

+1 772 286 6292

sduffin@naisouthcoast.com

www.naisouthcoast.com

JJ Sanguily

Sales Associate

+1 772 286-6292 c +1 772 834 3519

jj@naisouthcoast.com

www.naisouthcoast.com

Sale Price:

\$2,299,000

For Sale: ±12,004 SF Retail Showroom

1892 SE Federal Hwy, Stuart, FL 34994

Property Details

LOCATION: 1892 SE Federal Hwy, Stuart, FL 34994

PARCEL #: 093841020000000200

BUILDING SIZE: ±12,004 SF

PRICING: \$2,299,000

LOT SIZE: ±1.76 Acres (76,665 Square Feet)

BUILDING CLASS: Retail Showroom

Available Immediately!

Property Overview

- The building is well designed and lends itself to many retail showroom uses.
- Covered delivery area in the rear with a roll-up, grade level door.
- Exceptional parking and signage.
- Strong local demographics.



PUD Allowed Uses

Retail and retail service establishments, business and professional offices including real estate and insurance agencies, financial institutions, banks, restaurants with liquor service, drive-in restaurants, barber/beauty shops, hotel/motel, multifamily or residential units combined with non-residential uses, art galleries, travel agencies, laundry/dry cleaning facilities or other similar store front uses, schools, child care centers, nursery or preschool, kindergartens, other child care or education facilities, medical facilities and clinics, clubs, lodges and fraternal organizations, bakeries, veterinarian/animal clinic, recreational facilities such as, bowling, skating, miniature golf, etc., health/spa club, printing shops, research facilities, ACLF, congregate living facilities, or nursing home facilities.

For Sale: ±12,004 SF Retail Showroom

1892 SE Federal Hwy, Stuart, FL 34994



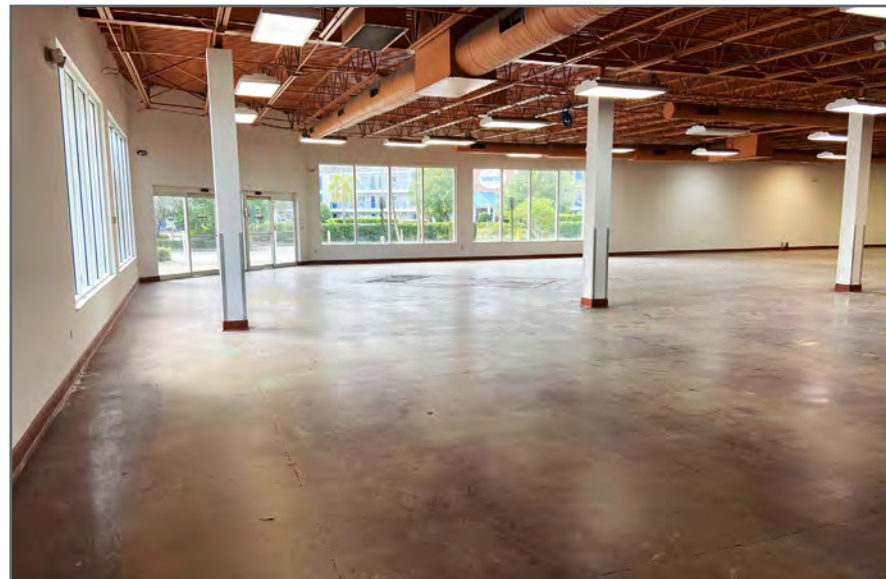
For Sale: ±12,004 SF Retail Showroom

1892 SE Federal Hwy, Stuart, FL 34994



For Lease: ±12,004 SF Retail Showroom

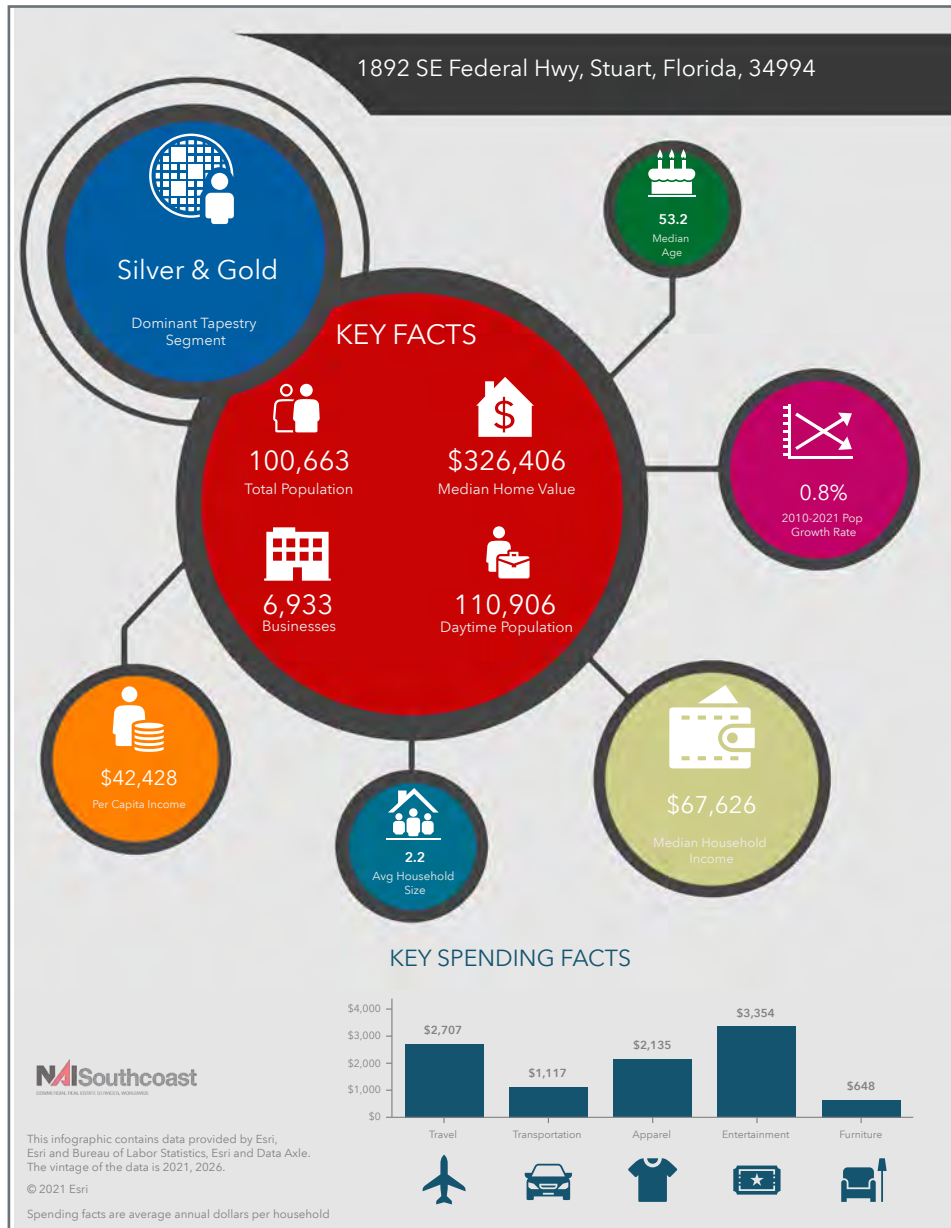
1892 SE Federal Hwy, Stuart, FL 34994



For Sale: ±12,004 SF Retail Showroom

1892 SE Federal Hwy, Stuart, FL 34994

2021 Demographics



Population

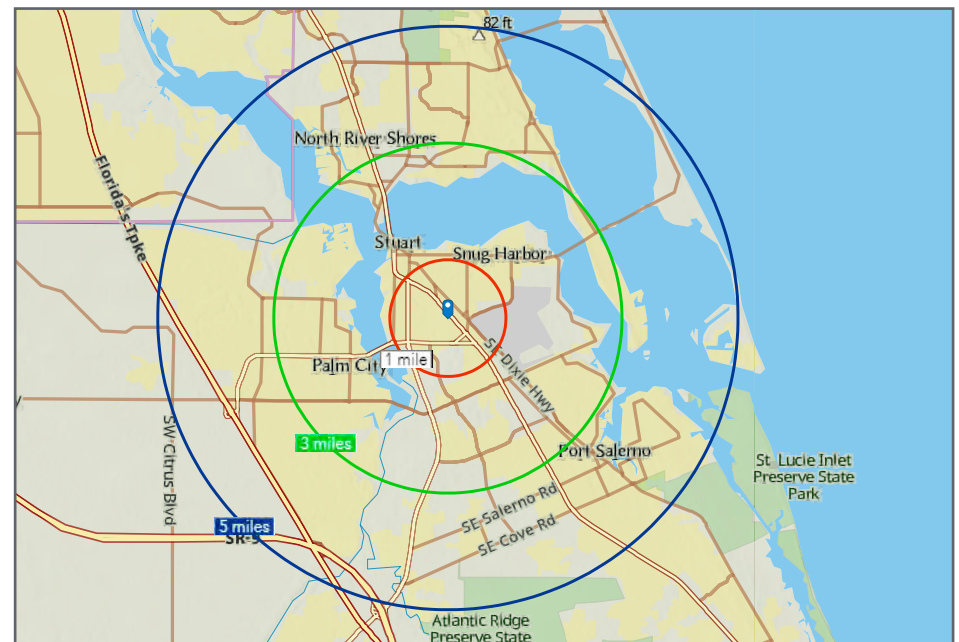
- 1 Mile 9,085
- 3 Mile: 47,924
- 5 Mile: 100,663

Average Household Income

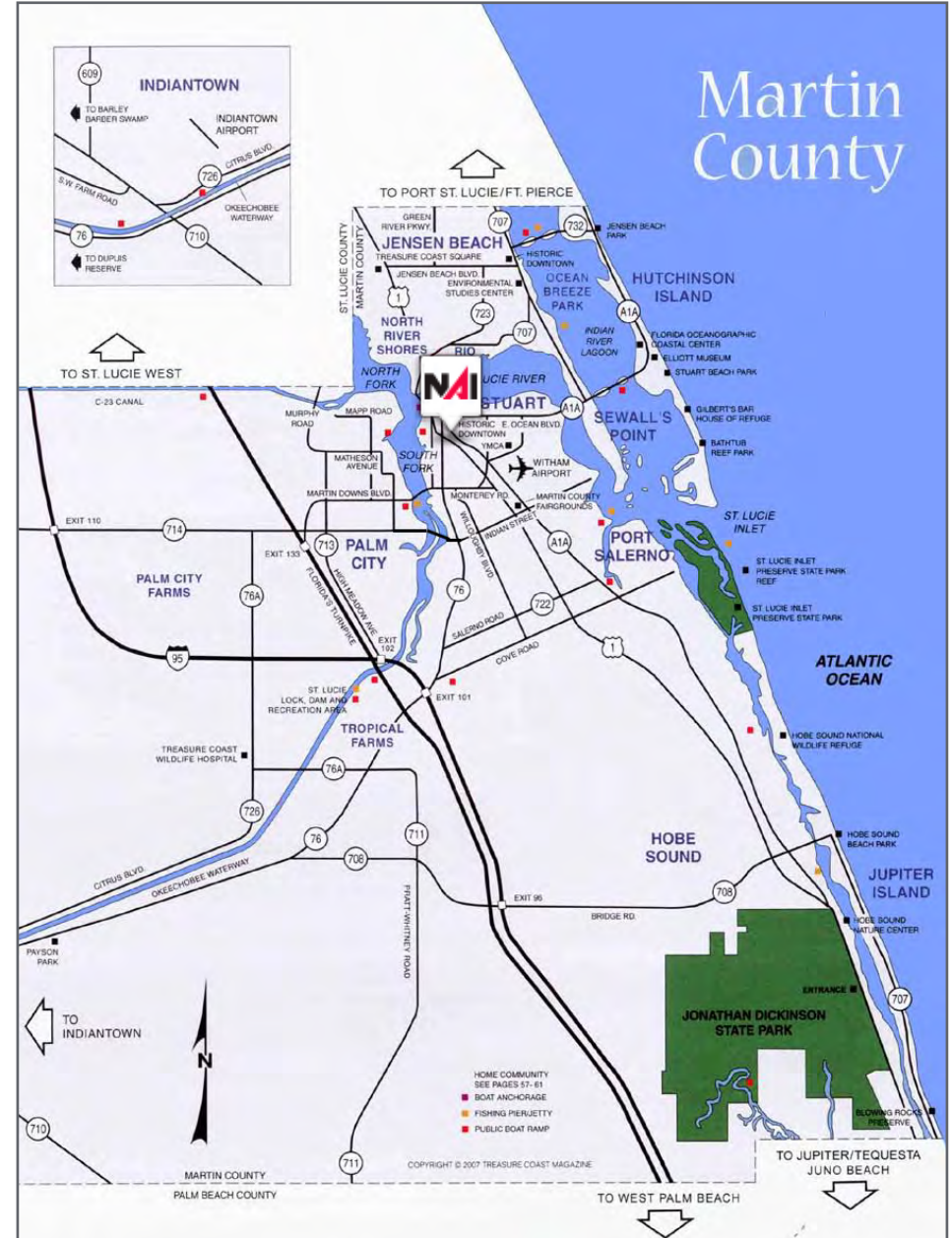
- 1 Mile \$58,495
- 3 Mile: \$90,384
- 5 Mile: \$95,383

Median Age

- 1 Mile 42.0
- 3 Mile: 51.1
- 5 Mile: 53.2



Area Maps



City Overview

City of Stuart, Florida

Stuart, Florida is located on Florida's East Coast, which borders the St. Lucie River and West of the Indian River. The climate is pleasant with mild winters and warm summers. The annual average temperature is 72 degrees. Annual rainfall averages 70.44 inches.

Stuart is famed for Sail fishing and all other types of sport fishing, you can enjoy Ocean fishing, river and bay fishing, fresh water fishing. The North and South forks of the St. Lucie River are tropical wonderlands for cruises. Stuart has quaint older neighborhoods in the downtown area. There is a mixture of town homes and condominiums. Stuart's successful revitalization program has made the Downtown area a pleasant ambiance, lined with shops and restaurants.

The top major employers are, Cleveland Clinic Hospital, Vought Aircraft, Municipal Government, and thousands of successful small businesses. The economy is driven by retail service, hospitality, construction and government sectors located throughout the city.

At the present time Stuart is a growing community, annexing new properties north and south of the city, currently 6.25 square miles. Revitalization is in progress in the Potsdam section of the downtown area as well as North of the new Roosevelt Bridge. The new Roosevelt Bridge was completed in 1996, and the Department of Transportation recently finished the Evans Crary Bridge, which leads to Stuart's Public Beaches.



Regional Overview

Martin County

The cities that make up Martin County are Jensen Beach/Rio, Stuart/Sewall's Point, Hutchinson Island, Hobe Sound, Jupiter/Tequesta, Palm City, Port Salerno and Indiantown. Martin County is a wonderful place to visit and live, with beaches, golf, fishing and boating. The County boasts arts amenities, quaint downtowns with shops, gourmet dining and galleries, museums, historic places, festivals and more.

Martin County is for...

The golf enthusiast... Martin County is home to over 35 world-class golf courses all within a 15-mile radius.

The sun worshiper... The County offers its visitors and residents alike some of the finest beaches on the east coast.

The discriminating arts shopper... More than 20 galleries participate in a monthly First Thursday gallery night. Many of these galleries are in the historic downtowns of Stuart, Jensen Beach, Port Salerno and Hobe Sound.

The music lover... The historic Lyric Theatre offers a wide-array of first class talent nearly 300 days a year... This acoustically amazing theatre features concerts for all music lovers, from classical to rock and roll, and theatrical performances by local and national talent.



For the die-hard festivals-goer... There are plenty to choose from and during the best Florida weather you can find. The Port Salerno Seafood Festival, Bookmania, ArtsFest, Pineapple Festival or one of the many festivals throughout the year.

The Treasure Coast Children's Museum is a great place for the kids located at Indian Riverside Park which has a fabulous water play area, fishing, and a riverfront view. Often, there are also events in the park including concerts, orchid shows, and more. Indian Riverside Park also features the Maritime and Yachting Museum. Hutchinson Island houses the Elliott Museum which focuses on art, history and technology. Named after prolific inventor Sterling Elliott, the museum houses permanent including Model AA Trucks, early transportation, history of Stuart and surrounding regions and baseball memorabilia. For the more scientifically minded and curious kids, the Florida Oceanographic Coastal Center which offers a fun opportunity to learn more about our local ecosystem and even feed a stingray!



LISTING AGENTS



Stuart Duffin, P. A., SIOR, CCIM

Sales Associate

+1 772 286 6292

sduffin@naisouthcoast.com

www.naisouthcoast.com



JJ Sanguily

Sales Associate

+1 772 286-6292 c +1 772 834 3519

jj@naisouthcoast.com

www.naisouthcoast.com

For Sale: ±12,004 SF Retail Showroom

1892 SE Federal Hwy, Stuart, FL 34994



Sale Price:

\$2,299,000



NO WARRANTY OR REPRESENTATION, EXPRESS OR IMPLIED, IS MADE AS TO THE ACCURACY OF THE INFORMATION CONTAINED HEREIN, AND THE SAME IS SUBMITTED SUBJECT TO ERRORS, OMISSIONS, CHANGE OF PRICE, RENTAL OR OTHER CONDITIONS, PRIOR SALE, LEASE OR FINANCING, OR WITHDRAWAL WITHOUT NOTICE, AND OF ANY SPECIAL LISTING CONDITIONS IMPOSED BY OUR PRINCIPALS NO WARRANTIES OR REPRESENTATIONS ARE MADE AS TO THE CONDITION OF THE PROPERTY OR ANY HAZARDS CONTAINED THEREIN ARE ANY TO BE IMPLIED.