

OFFICE CONDO UNIT

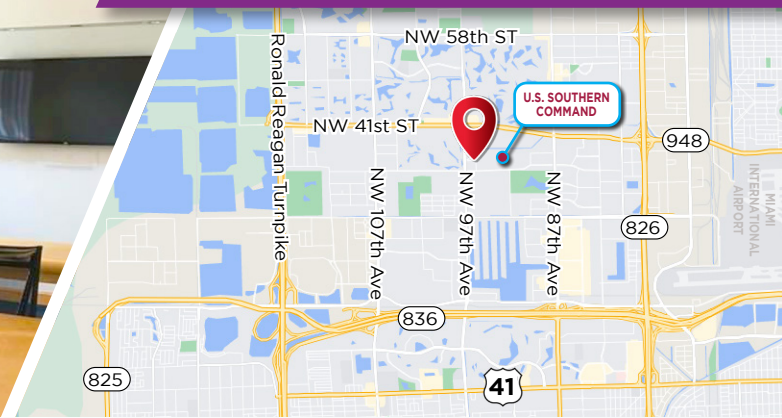
FOR **SALE**

9655 NW 33rd St, DORAL, FL 33172

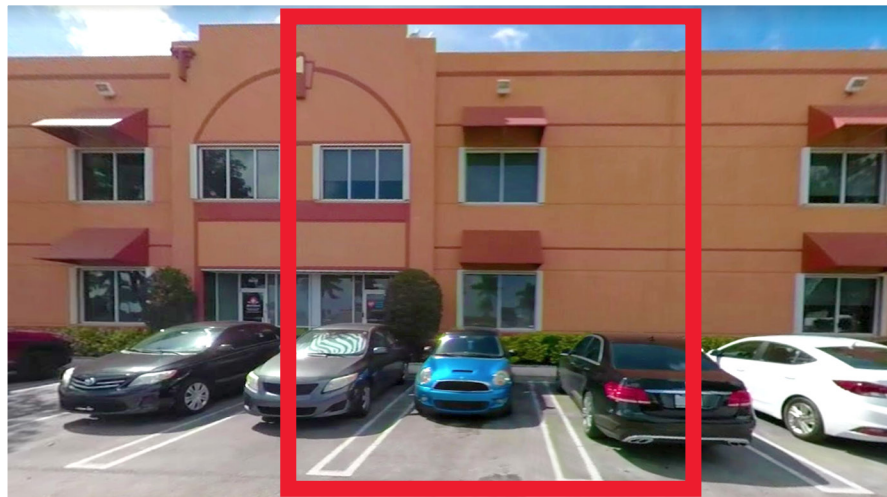


9,200 ±SQFT

\$2,498,000



- 7,200 ±SQFT office
- 2,000 ±SQFT warehouse
- 3 dock doors
- 24' clear ceilings
- Class "A" space
- Close to Southern Command
- Use to be a Call Center
- Furniture is negotiable



CONTACT US!



JOE PELAYO/CCIM, SIOR
trec@joepelayo.com

954.224.8773

TREC
Total Real Estate
Consultants Inc.
www.trecfl.com
954.341.3294

JAMIL EL-SROUJI/BA
southfl.commercial@gmail.com

561.542.4468



GEORGE W. CASEY
georgewileycasey@gmail.com

954.592.1776

VICE PRESIDENT
U.S. VETERAN
CHAMBER OF COMMERCE

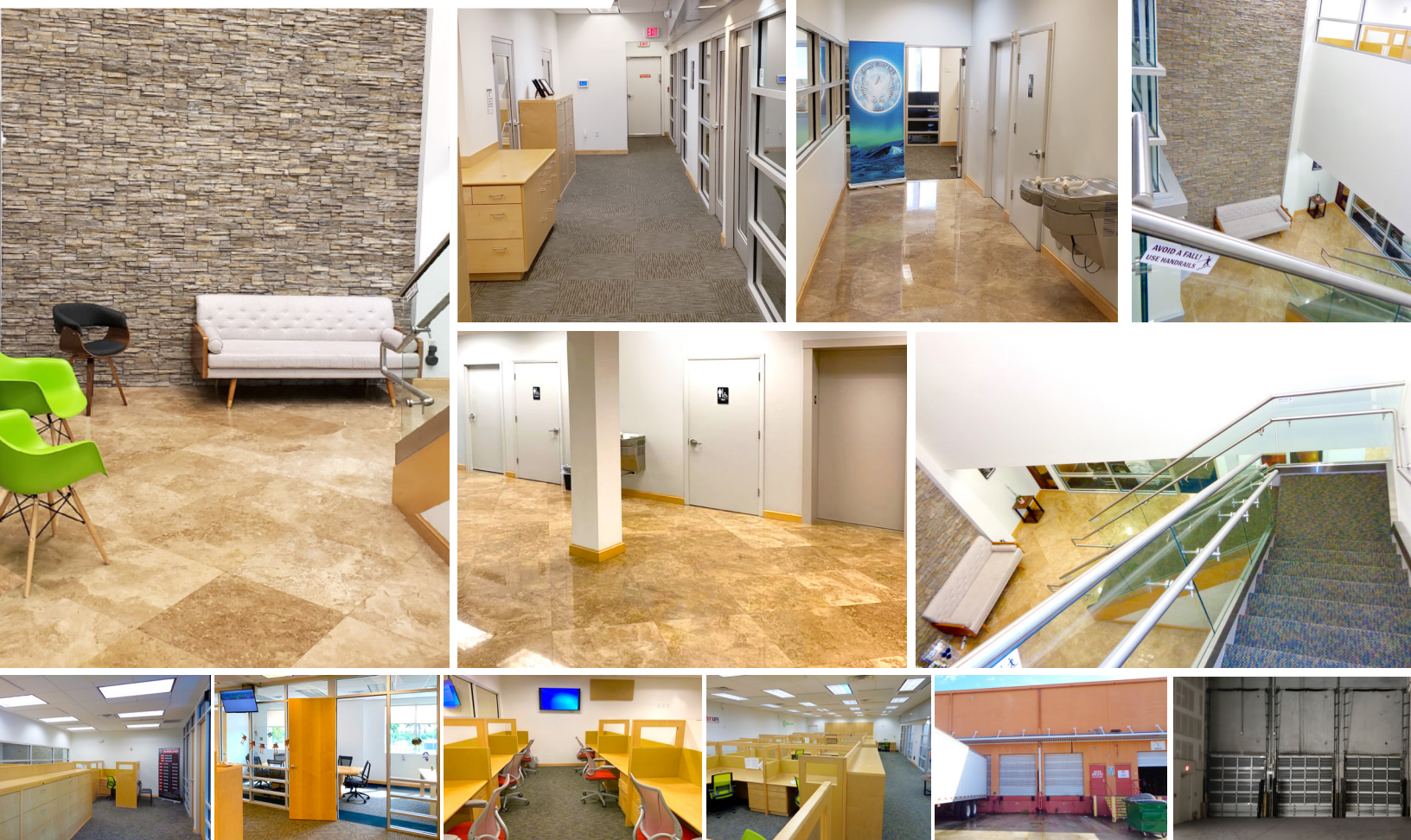


Note: This offering subject to errors, omissions, prior sales or withdrawal without notice.

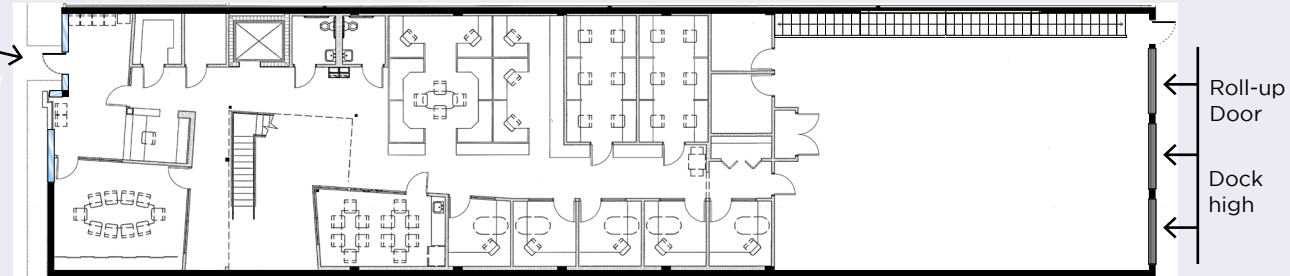
OFFICE CONDO UNIT

FOR SALE

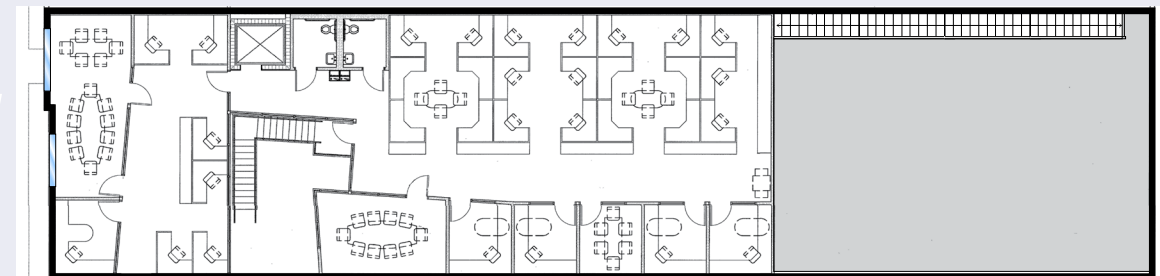
9655 NW 33rd St, DORAL, FL 33172



First Floor



Second Floor



JOE PELAYO/CCIM, SIOR
trec@joepelayo.com
954.224.8773

CONTACT US!

TREC
Total Real Estate
Consultants Inc.
www.trecfl.com
954.341.3294

JAMIL EL-SROUJI/BA
southfl.commercial@gmail.com
561.542.4468



GEORGE W. CASEY
georgewileycasey@gmail.com
954.592.1776
VICE PRESIDENT
U.S. VETERAN
CHAMBER OF COMMERCE



Note: This offering subject to errors, omissions, prior sales or withdrawal without notice.