

FOR SALE

“Why wait for new construction when you can move in right away?”

- ◆ 2,500 sf office building for sale in a fantastic location. Property is adjacent to the WestChase Community and less than 20 minutes to the Tampa International Airport.
- ◆ Building is divided into 2 separate units. Each 1,250 sf has their own address and utilities. You can keep as two separate offices or easily combine into one large one!
- ◆ Each unit has 5 offices, breakroom, reception area, and lots of storage
- ◆ Offices have plumbing to accommodate medical users
- ◆ Located in Covington Professional Park surrounded by abundant retail & restaurants
- ◆ Plenty of parking with convenient side access doors leading out to parking lot



W. Hillsborough Ave. Professional Office

13618-13620 W. Hillsborough Ave. • Tampa, FL 33635

Sale Price: \$ 565,000



Heidi Tuttle-Beisner, CCIM

Broker/Owner

Cell: (727) 992-1674

Office: (727) 376-4900

htuttle@cap-realty.com

www.cap-realty.com



COMMERCIAL ASSET PARTNERS

Sales & Leasing • Investment • Property Management • Site Selection

BUILDING SPECIFICATIONS

Address: 13618-13620 W Hillsborough Ave., Tampa
Land Size: Office Condo Building - .06 acres
Building Size: 2,500 sf
Year Built: 2009
Parking: 3.64/1000 sf
Suitable Use: Professional Office



Covington Park has a highly visible sign from Hillsborough Ave!



This information is believed to be accurate. Broker is not responsible for misstatements of fact, errors or omissions, prior sale, change of price, terms or withdrawal from market without notice. Buyer and/or tenants shall verify all information.



Location Map

Floor Plan 2,500 sf

Demographics - 5 miles



Population Estimate: 158,069



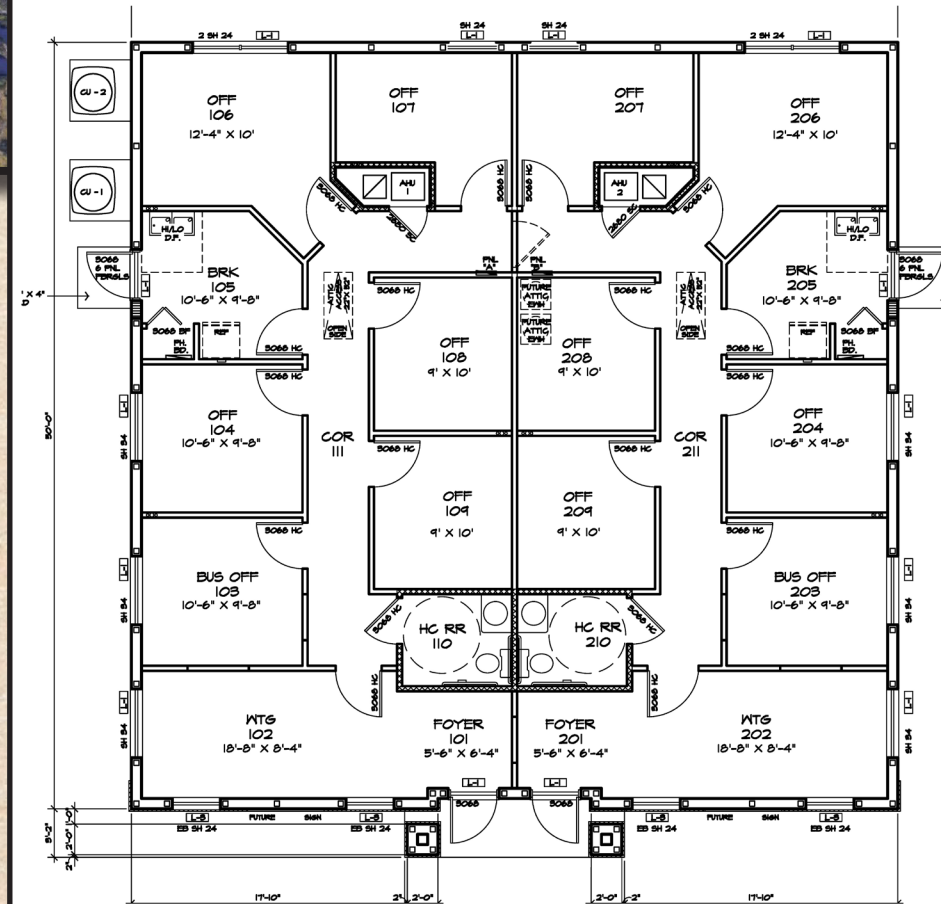
Population Growth: 4.58%



Median Age: 41.9



Average HH Income: \$100,862



13618 W Hillsborough Ave.

13620 W Hillsborough Ave.