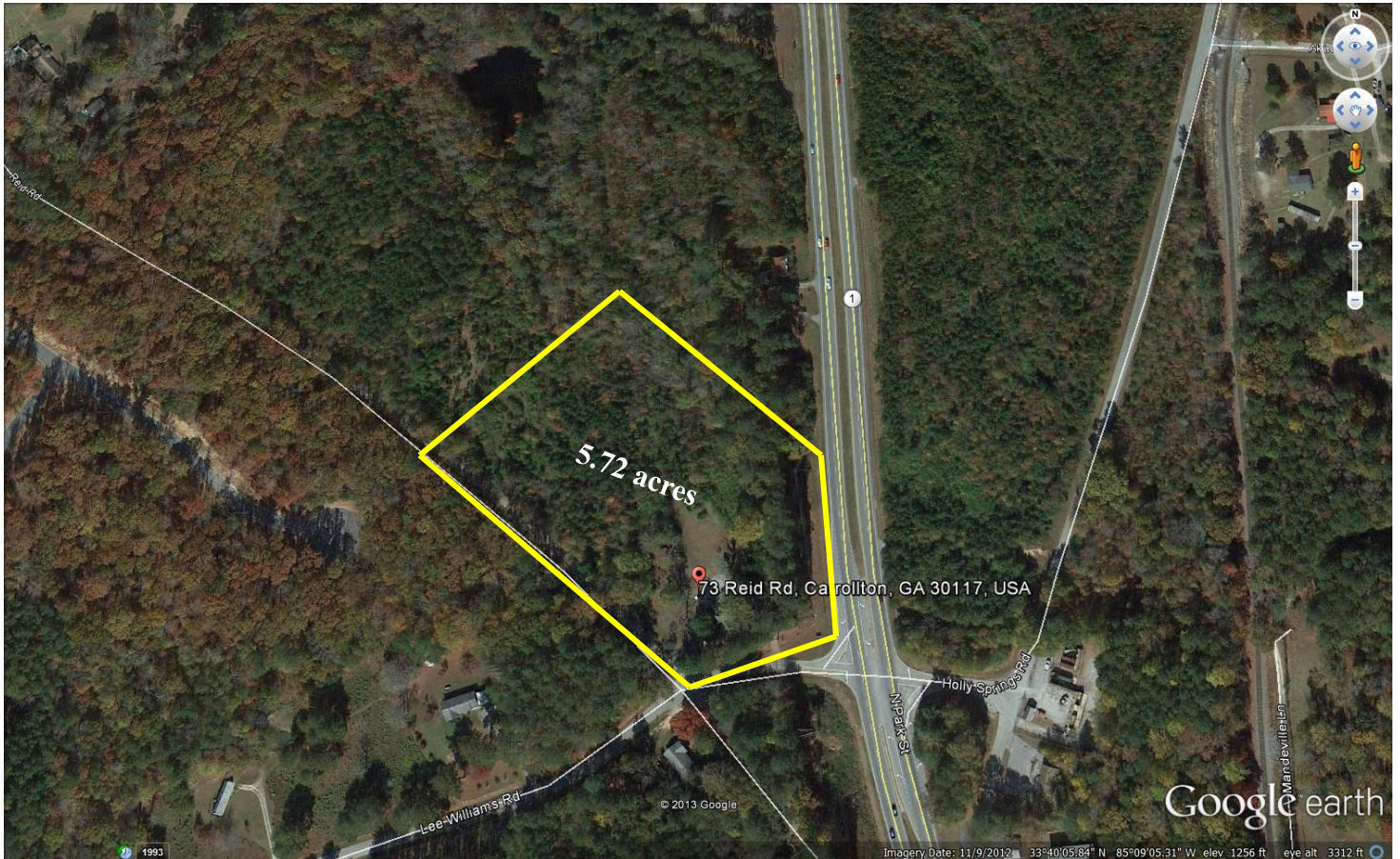


***For Sale
Commercial Pin Corner
1 mile South of Interstate 20***

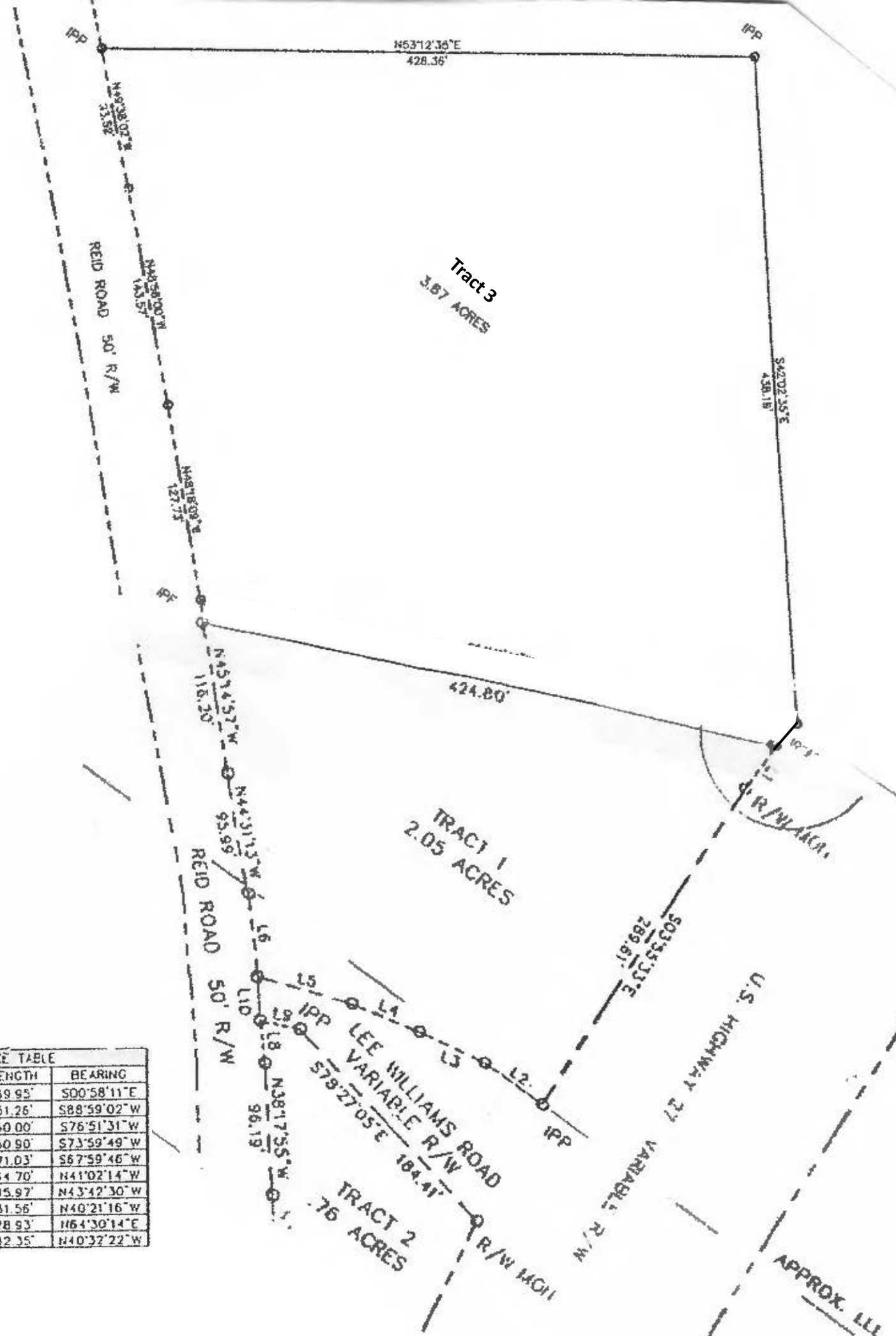


- **Great location for convenience store or retail**
- **Room on lot for industrial mixed use if desired**
- **Traffic count in excess of 25,000 vpd on US 27**
- **Less than one mile south of I-20, Exit 11**
- **County water on site**
- **Good topo with dirt to balance on site**
- **Crossover on US 27, site entrance on Lee Williams or Reid**
- **No GDOT work required**
- **Already zoned commercial, some site engineering available**
- **List price: \$675,000 for all (firm)**

***Offered for Sale Exclusively by
Commercial Realty Services of West Georgia
Mike Patterson, CCIM***

770-301-1886 ebroker@msn.com

www.westgeorgiacommercial.com



LINE TABLE

LINE	LENGTH	BEARING
L1	39.95'	S00°58'11\"E
L2	51.26'	S88°59'02\"W
L3	50.00'	S76°51'31\"W
L4	50.90'	S73°59'49\"W
L5	71.03'	S87°59'46\"W
L6	64.70'	N41°02'14\"W
L7	95.97'	N43°42'30\"W
L8	31.56'	N40°21'16\"W
L9	28.93'	N64°30'14\"E
L10	32.35'	N40°32'22\"W