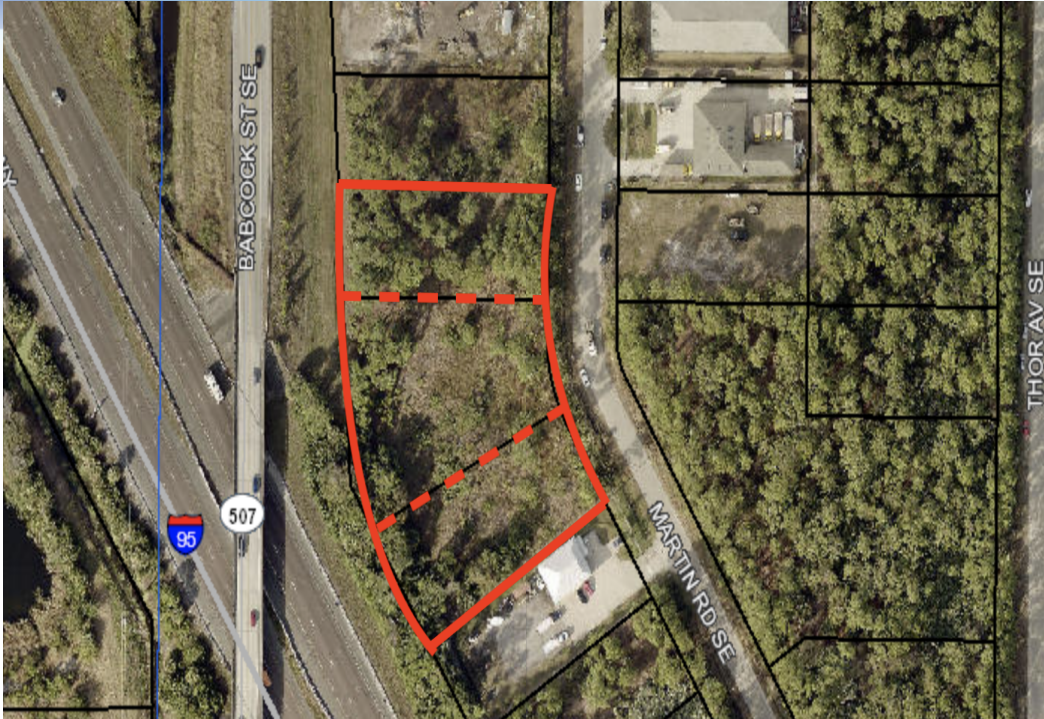


EXECUTIVE SUMMARY

- Vacant Land - 502, 514, 526 Martin Road SE Palm Bay, FL 32909



OFFERING SUMMARY

Sale Price: \$310,000

Lot Size: 2.04 Acres

Zoning: GC

PROPERTY OVERVIEW

Desirable vacant land in SE Palm Bay.

Consists of three properties that are adjoining.

Zoned General Commercial which is a mix of service, warehousing, commercial, wholesaling, storage, and similar businesses and uses. (contact city of Palm Bay for specific use)

LOCATION OVERVIEW

Desirable vacant land in SE Palm Bay
Site is less than 2 miles from the I-95/Malabar Rd interchange
Interstate visibility
Located on the east of Babcock Street

ROB BECKNER, SIOR

Principal
321.722.0707 X11
rob@teamlbr.com

Lightle Beckner Robison, Inc.

321.722.0707 • teamlbr.com
70 W. Hibiscus Blvd.,
Melbourne, FL 32901

Information contained herein has been obtained through sources deemed reliable but cannot be guaranteed as to its accuracy. A purchaser or lessee is expected to verify all information to his/her own satisfaction. Zoning information subject to change and not warranted. Always confirm current requirements with local governing agencies.

ADDITIONAL PHOTOS

- Vacant Land - 502, 514, 526 Martin Road SE Palm Bay, FL 32909



ROB BECKNER, SIOR

Principal
321.722.0707 X11
rob@teamlbr.com

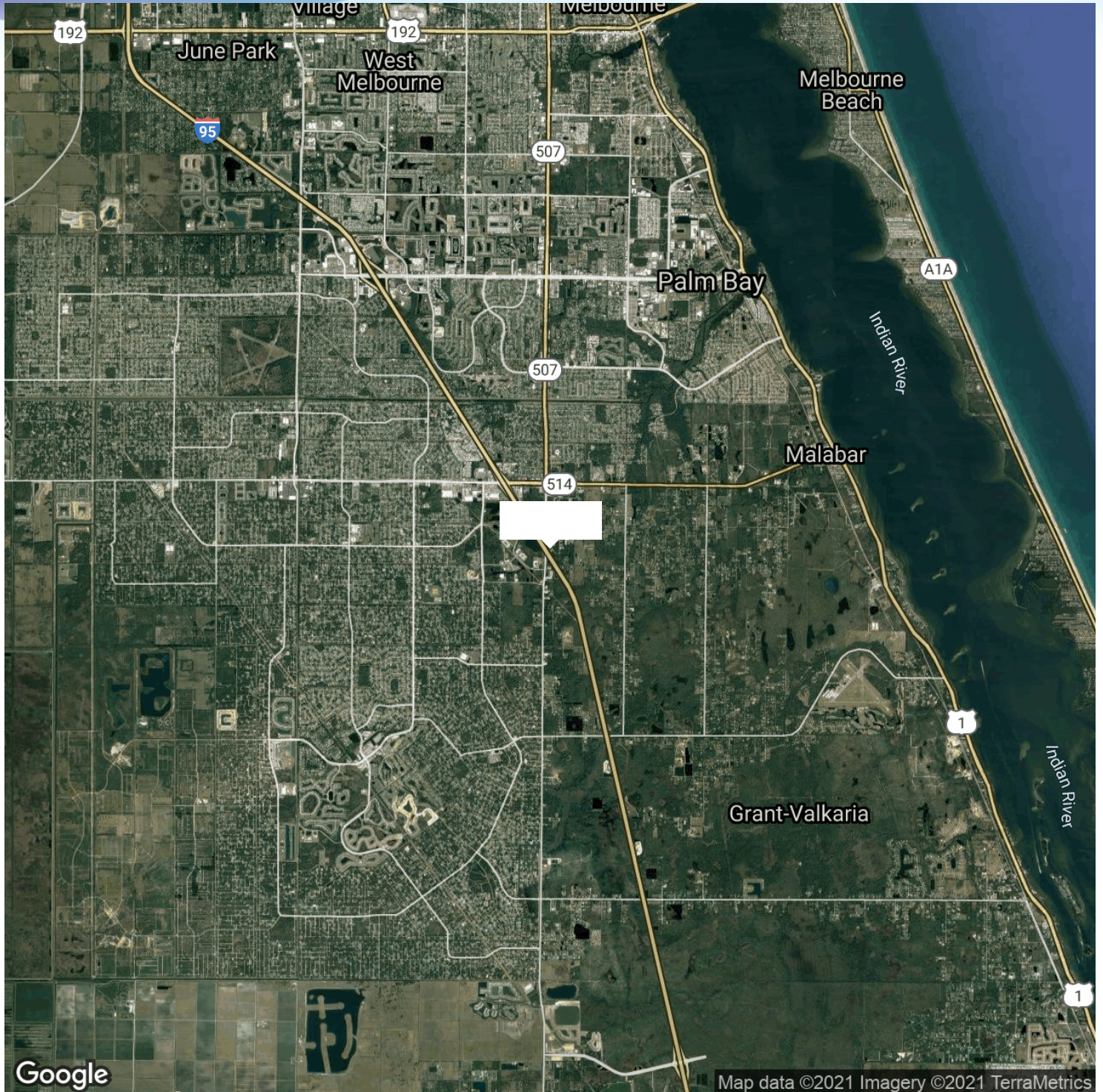
Lightle Beckner Robison, Inc.

321.722.0707 • teamlbr.com
70 W. Hibiscus Blvd.,
Melbourne, FL 32901

Information contained herein has been obtained through sources deemed reliable but cannot be guaranteed as to its accuracy. A purchaser or lessee is expected to verify all information to his/her own satisfaction. Zoning information subject to change and not warranted. Always confirm current requirements with local governing agencies.

REGIONAL MAP

• Vacant Land - 502, 514, 526 Martin Road SE Palm Bay, FL 32909



ROB BECKNER, SIOR

Principal
321.722.0707 X11
rob@teamlbr.com

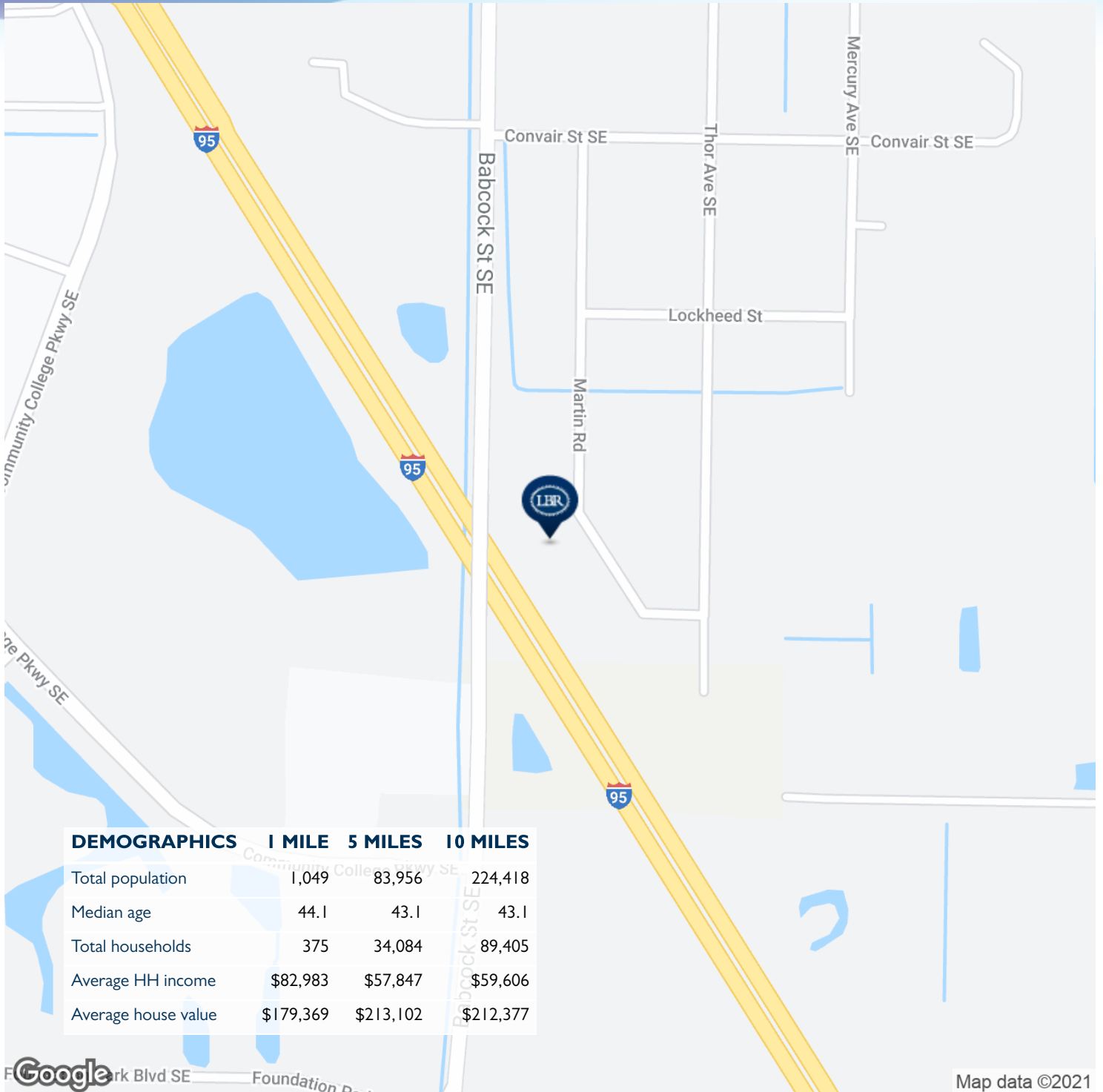
Lightle Beckner Robison, Inc.

321.722.0707 • teamlbr.com
70 W. Hibiscus Blvd.,
Melbourne, FL 32901

Information contained herein has been obtained through sources deemed reliable but cannot be guaranteed as to its accuracy. A purchaser or lessee is expected to verify all information to his/her own satisfaction. Zoning information subject to change and not warranted. Always confirm current requirements with local governing agencies.

LOCATION MAP

• Vacant Land - 502, 514, 526 Martin Road SE Palm Bay, FL 32909



Google

Map data ©2021

ROB BECKNER, SIOR

Principal
321.722.0707 X11
rob@teamlbr.com

Lightle Beckner Robison, Inc.

321.722.0707 • teamlbr.com
70 W. Hibiscus Blvd.,
Melbourne, FL 32901

Information contained herein has been obtained through sources deemed reliable but cannot be guaranteed as to its accuracy. A purchaser or lessee is expected to verify all information to his/her own satisfaction. Zoning information subject to change and not warranted. Always confirm current requirements with local governing agencies.