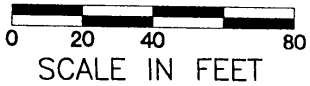
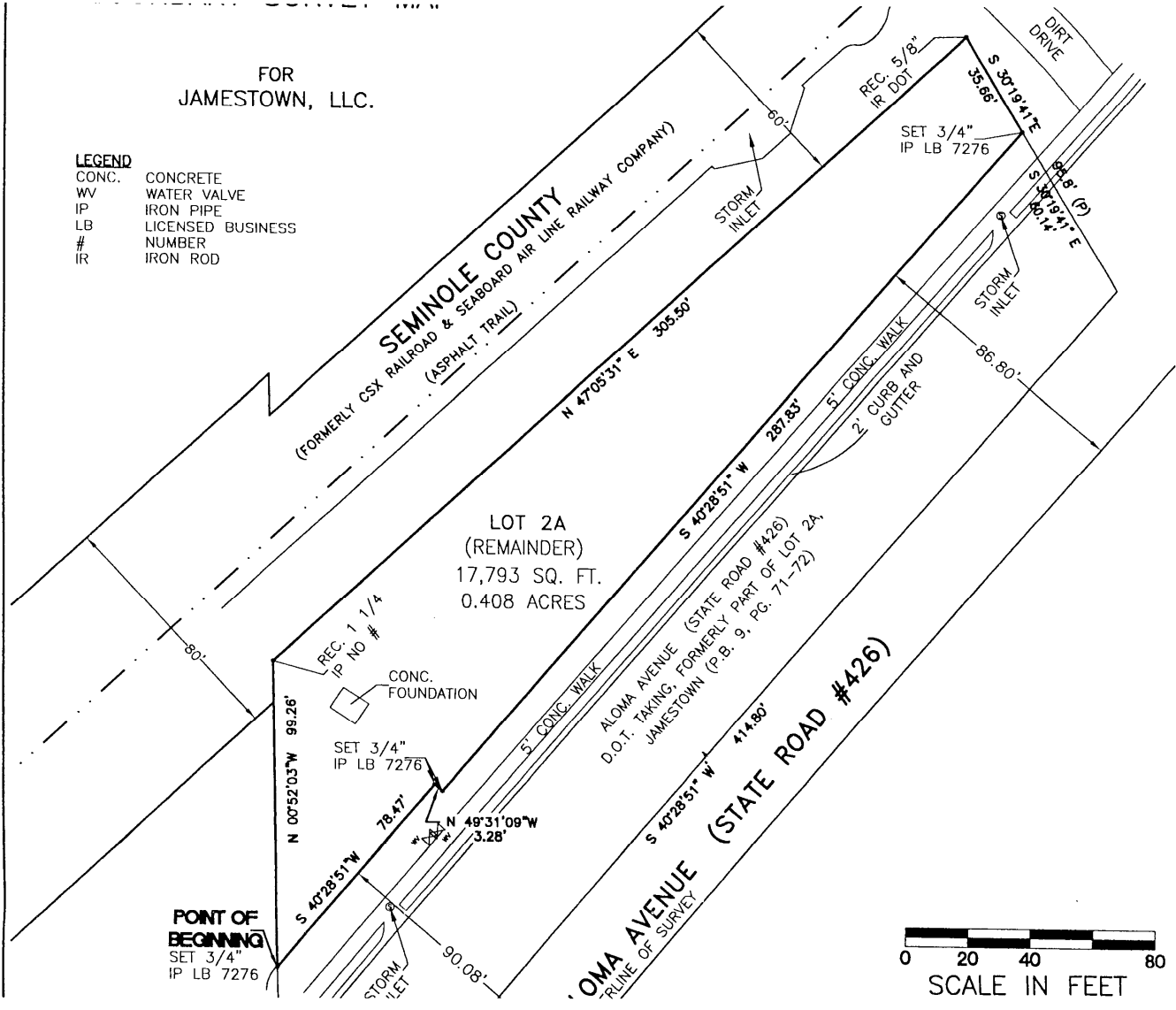


FOR
JAMESTOWN, LLC.

LEGEND

- CONC. CONCRETE
- WV WATER VALVE
- IP IRON PIPE
- LB LICENSED BUSINESS
- # NUMBER
- IR IRON ROD



BOUNDARY BASIS: SOUTH LINE OF THE NW 1/4 OF THE SW 1/4 OF SECTION 28, TOWNSHIP 21 SOUTH, RANGE 31 EAST
 HAVING A BEARING OF NORTH 89°24'54" EAST