

POLK FARMLAND NORTH

FORT MEADE, FL | POLK COUNTY

70.2 ± AC TOTAL



SPECIFICATIONS & FEATURES

Acres: 70.2 ± AC, including 50 ± AC irrigated farmland

Sale Price: \$599,000

Price per Acre: \$8,557

County: Polk

Site Address: 3875 Lake Buffum Road West, Fort Meade, FL 33841

Water Features: Small lake for irrigation withdrawal for backup and added water

Road Frontage: 2,967 ± FT on Lake Buffum Road West

Irrigation: Subsurface drip tape and frost/freeze protection sprinklers

Wells:

- (1) 10-inch well and pump
- Irrigation pond centrifugal pump
- Both are powered by a Caterpillar 6-cylinder diesel engine

Water Use Permits: SWFWMD #62

Utilities: Electric available

Soil Types: Sparr, Tavares, Narcoosee sands, Samsula muck, Zolfo, Pomona fine sands

Wetlands/Uplands:

- 19 ± AC wetlands
- 51 ± AC uplands

FLU/Zoning: A/RR (Agriculture/Residential Rural)

Current Use: Agriculture, farming operation

Taxes: \$2,424.36 for 2021

Structures: None

Income Features: Turn-key farming operation



Unique farm with rolling hills and elevation!

LOCATION & DRIVING DIRECTIONS

Parcel IDs:

- 26310200000043020
- 263111000000033010

GPS Location: 27.812957, -81.694964

Driving Directions from US 98:

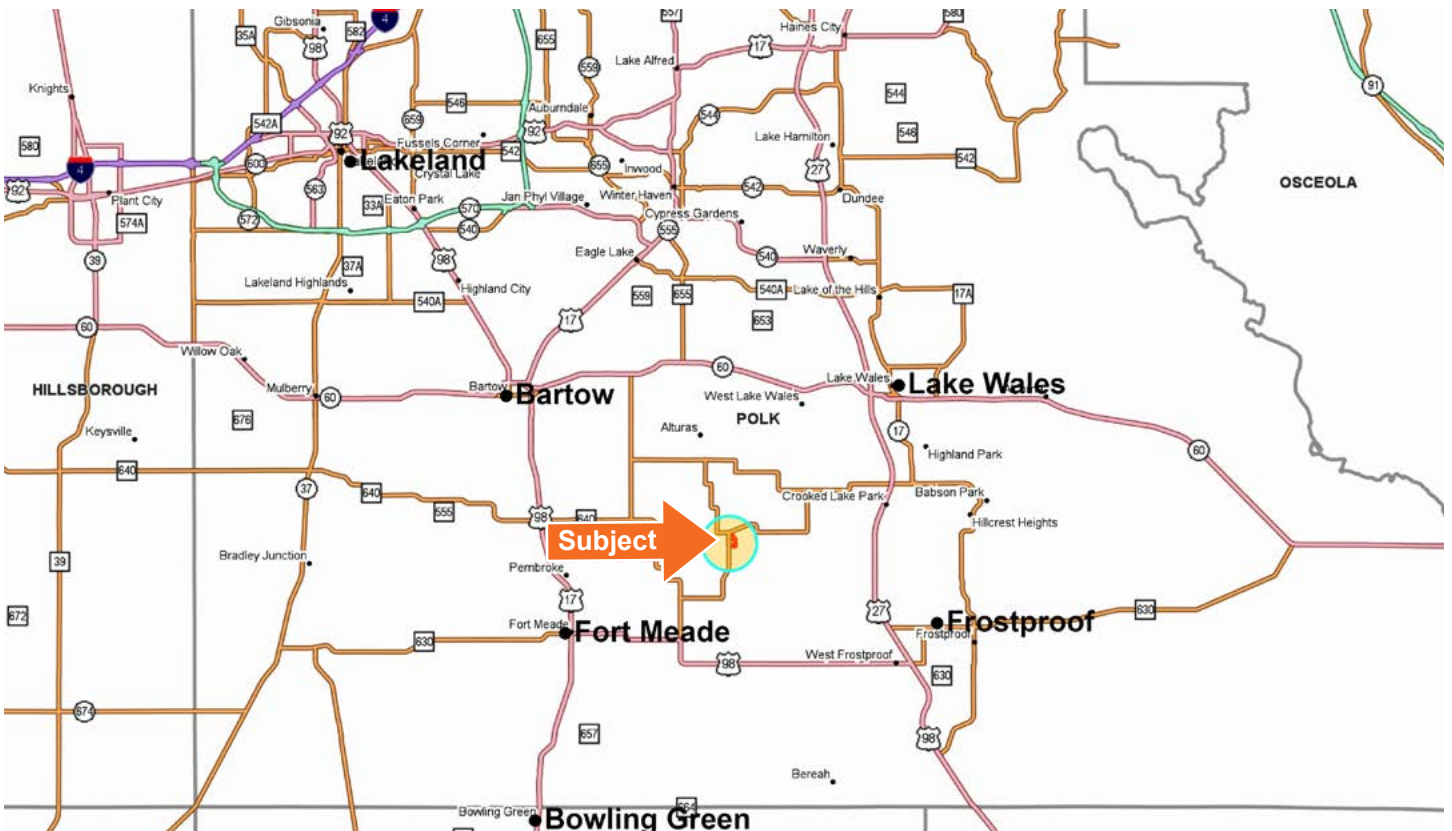
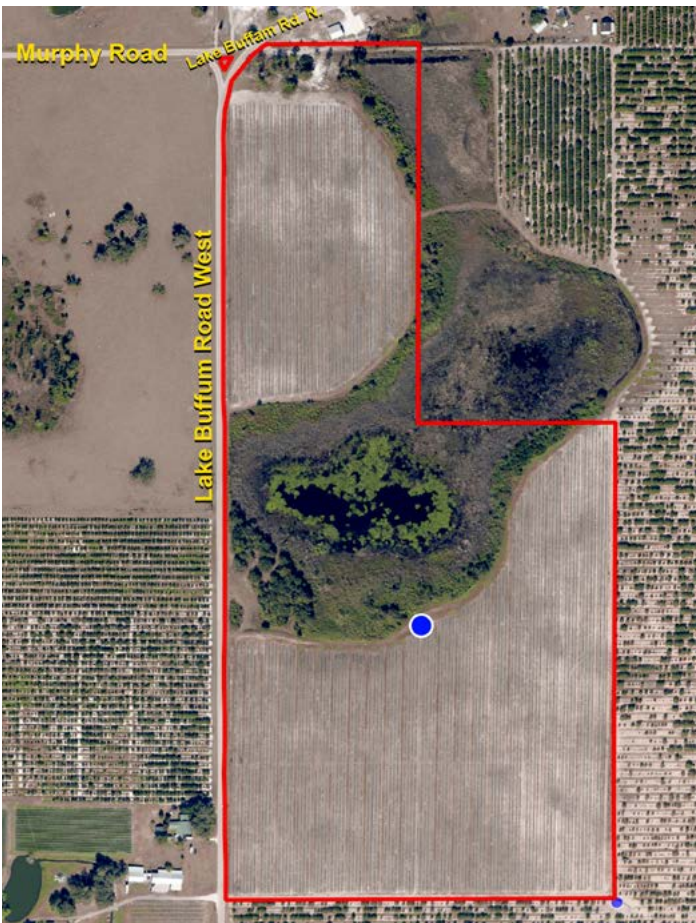
- From US 98, go to Lake Hendry Road and turn north (left).
- Go to Lake Buffum Road West to farm on right just before Murphy Road.

Driving Directions from US 27:

- From US 27, turn west on Alturas Babson Park Cutoff Road.
- Turn south on Lake Buffum Road West and farm is on the left just past Murphy Road.

Showing Instructions: By appointment only.

Contact Advisor Carson Futch, 863.216.5913, to learn more or schedule a showing.



The farm has made all of the necessary improvements. The soils and drainage systems are most desirable. This property is a one-of-a-kind opportunity to grow various crops that could include hemp accompanied by a legal growing permit. The drip irrigation and the system for frost and freeze protection are excellent. With beautiful rolling hills and elevations, this property is unique in Central Florida.





Nearby property is a legally permitted pilot project growing hemp.









1723 Bartow Rd | Lakeland, Florida 33801

70.2 ± AC • Turn-key farm operation with an Irrigation system
All the necessary improvements have been made
Beautifully unique Central Florida farm with rolling hills and elevation

Visit SVNsaunders.com and Search For: **Polk Farmland**

Carson Futch 863.216.5913 | carson.futch@svn.com



HEADQUARTERS

1723 Bartow Rd
Lakeland, Florida 33801
863.648.1528

NORTH FLORIDA

356 NW Lake City Ave
Lake City, Florida 32055
386.438.5896

GEORGIA

125 N Broad Street, Suite 210
Thomasville, Georgia 31792
229.299.8600

©2021 SVN | Saunders Ralston Dantzler Real Estate.
All SVN® Offices Independently Owned and Operated

SVN | Saunders Ralston Dantzler Real Estate is a full-service land and commercial real estate brokerage with over \$3 billion in transactions representing buyers, sellers, investors, institutions, and landowners since 1996. We are recognized nationally as an authority on all types of land, including agriculture, ranch, recreation, residential development, and international properties. Our commercial real estate services include marketing, property management, leasing and tenant representation, valuation, business brokerage, and advisory and counseling services for office, retail, industrial, and multi-family properties. Our firm also features an auction company, forestry division, international partnerships, hunting lease management, and extensive expertise in conservation easements. Located at the center of Florida's I-4 corridor, we provide proven leadership and collaborative expertise backed by the strength of the SVN® global platform. To learn more, visit SVNsaunders.com.

