



Building

- 7,750± SF Mixed-Use Commercial Building
- 1,696± SF House
- Additional vacant land on the hard corner
- Built in 1960

Land

- Lot Size: 0.88± AC
- Zoning: BU-2 Retail, Warehousing & Wholesale Commercial, Brevard County
- Permitted uses include office, medical or retail
- Parcel ID # 14-22-29-2244-03-241

Location

- Located at the corner of N Tropical Trail and Myrtice Avenue

Sale Price

- \$950,000



For more information, please contact:

Lisa Bailey, SIOR
Principal
D 407.440.6645
lisa.bailey@avisonyoung.com

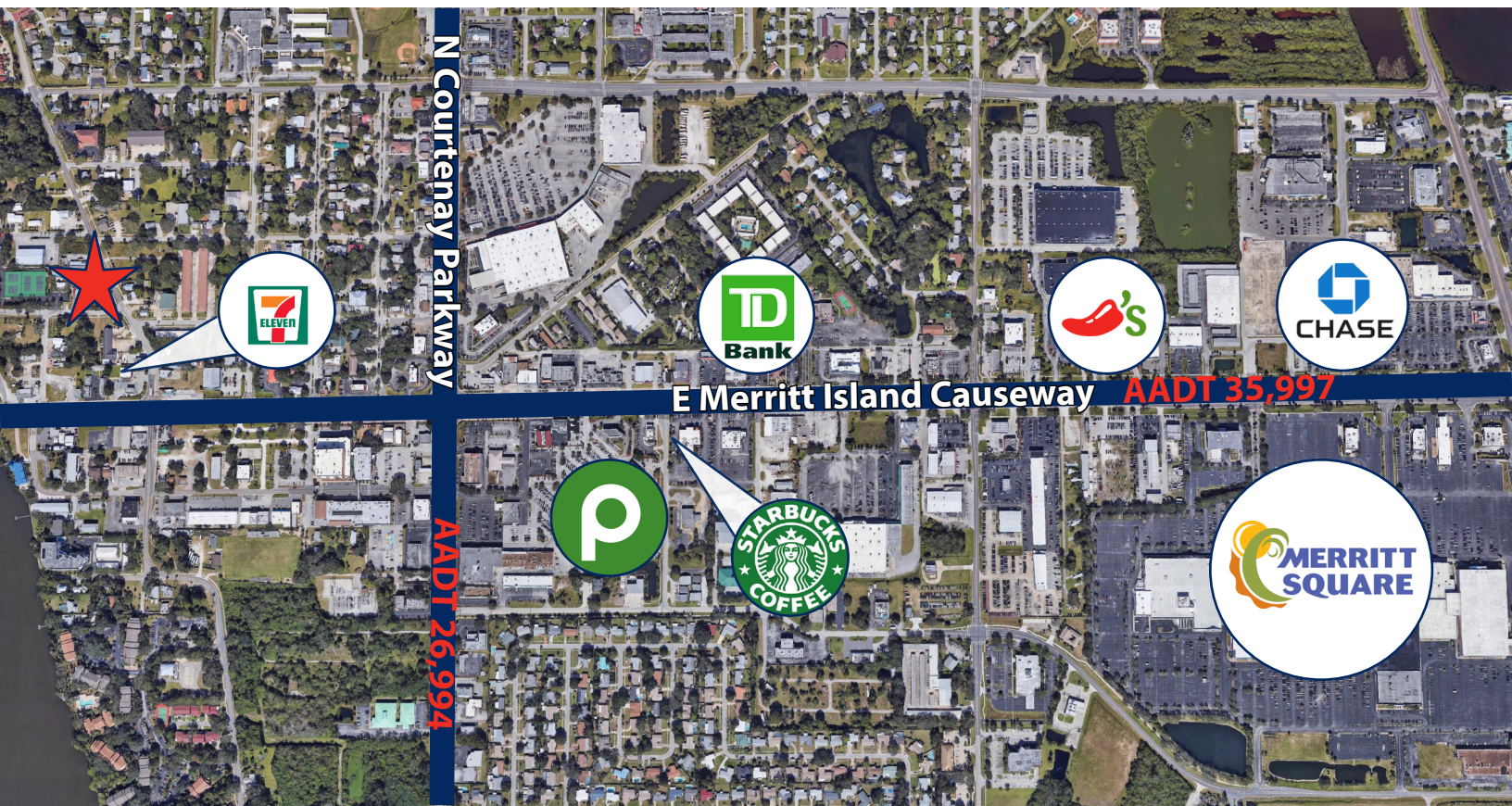
135 W Central Blvd
Suite 700
Orlando, FL 32801

Nathan Eissler, CCIM, SIOR
Vice President
D 407.440.6658
nathan.eissler@avisonyoung.com

**AVISON
YOUNG**

For Sale
127-129 N Tropical Trl | 450 Myrtice Ave

Merritt Island, FL 32953



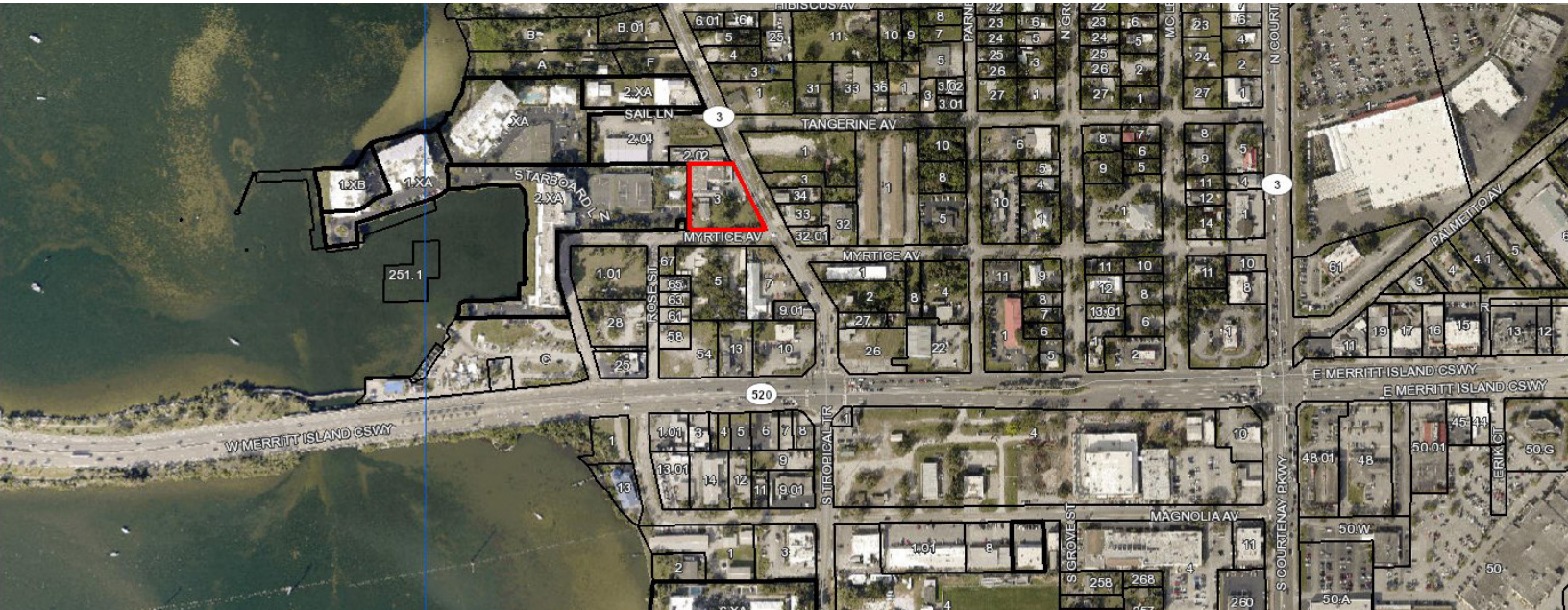
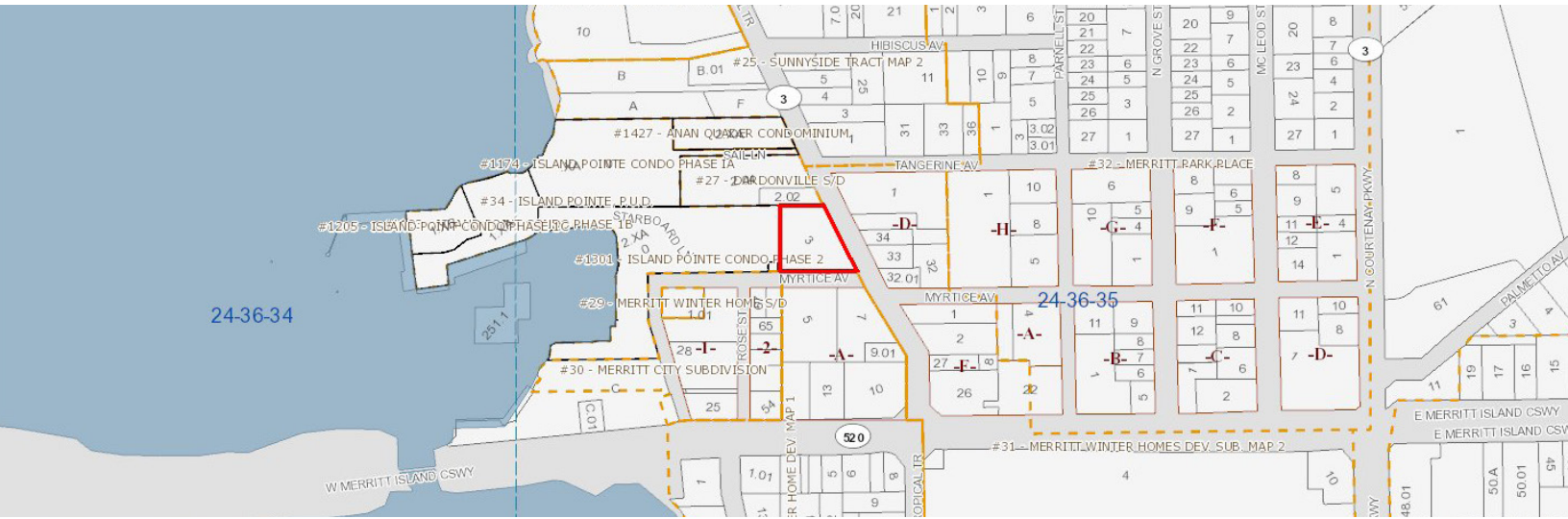
Lisa Bailey, SIOR
Principal
D 407.440.6645
lisa.bailey@avisonyoung.com

Nathan Eissler, CCIM, SIOR
Vice President
D 407.440.6658
nathan.eissler@avisonyoung.com

135 W Central Blvd
Suite 700
Orlando, FL 32801

Community Commercial Zoning Information

Appropriate uses within the community commercial designation are specified in the Future Land Use Element. Residential densities shall be subject to the conditions set forth in the Future Land Use Element.



Lisa Bailey, SIOR
Principal
D 407.440.6645
lisa.bailey@avisonyoung.com

Nathan Eissler, CCIM, SIOR
Vice President
D 407.440.6658
nathan.eissler@avisonyoung.com

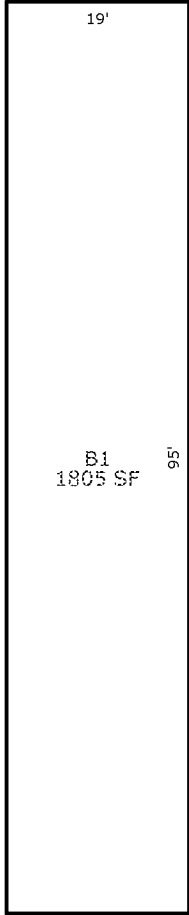
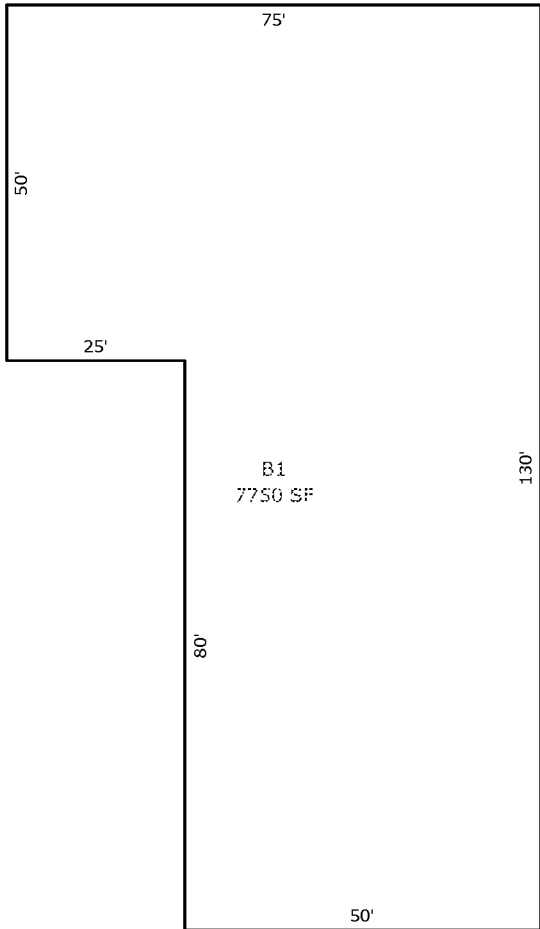
135 W Central Blvd
Suite 700
Orlando, FL 32801



127-129 N Tropical Trl | 450 Myrtice Ave

For Sale

Merritt Island, FL 32953



Lisa Bailey, SIOR
Principal
D 407.440.6645
lisa.bailey@avisonyoung.com

Nathan Eissler, CCIM, SIOR
Vice President
D 407.440.6658
nathan.eissler@avisonyoung.com

135 W Central Blvd
Suite 700
Orlando, FL 32801