



Free-standing downtown office available

- 1,424± SF free-standing office building
- Immediate access to E Colonial Drive (SR 50), with close proximity to Interstate-4, and SR 408
- Minutes from Lake Eola, Mills Avenue, SoDo, and the Milk District. Within close proximity to the Orlando Executive Airport
- Five on-site parking spaces

Asking Price

- \$285,000 (\$200/sf)



Immediate access to E Colonial Drive (SR 50)
49,000± AADT



Downtown location



Frontage on major road and monument signage



Minutes from Lake Eola and numerous eateries

For further information

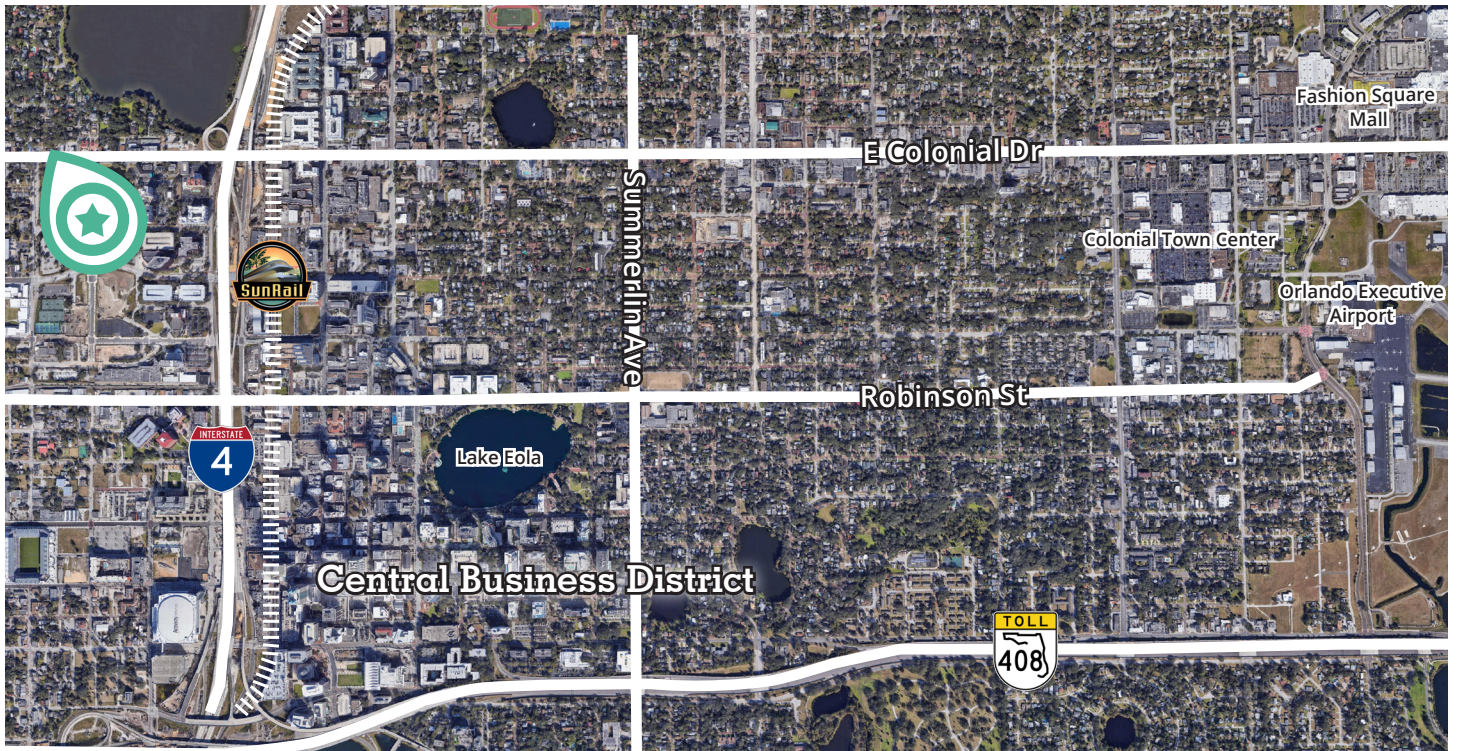
Lawson Dann

Senior Vice President

C +1 407 342 4698

lawson.dann@avisonyoung.com

avisonyoung.com



**For further
information**

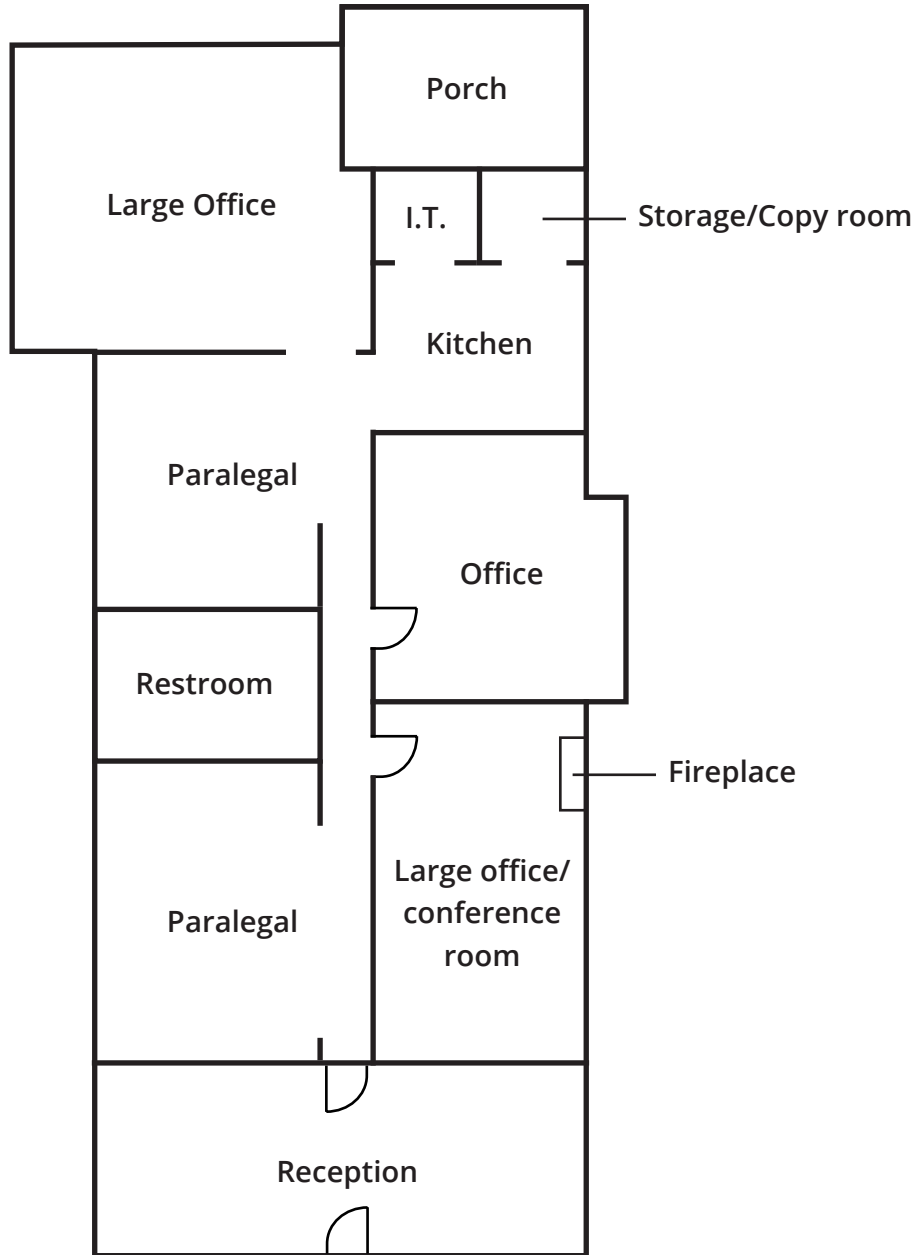
Lawson Dann
Senior Vice President
C +1 407 342 4698
lawson.dann@avisonyoung.com

avisonyoung.com

Downtown Orlando Office | For Sale

617 W Colonial Dr, Orlando, FL 32804

1,424± SF



For further information

Lawson Dann
Senior Vice President
C +1 407 342 4698
lawson.dann@avisonyoung.com

avisonyoung.com