

±3.12 Acre General Commercial Site  
5601 S Kanner Hwy, Stuart, FL 34997

**NAI**Southcoast



**3.12 ACRES**

S KANNER HWY



Presented by  
Boyd G. Bradfield, Jr., GRI, CCIM, SIOR  
Founder  
+1 772 286 6292  
boyd@naisouthcoast.com  
www.naisouthcoast.com

Offered At:

**\$1,200,000**

# ±3.12 Acre General Commercial Parcel

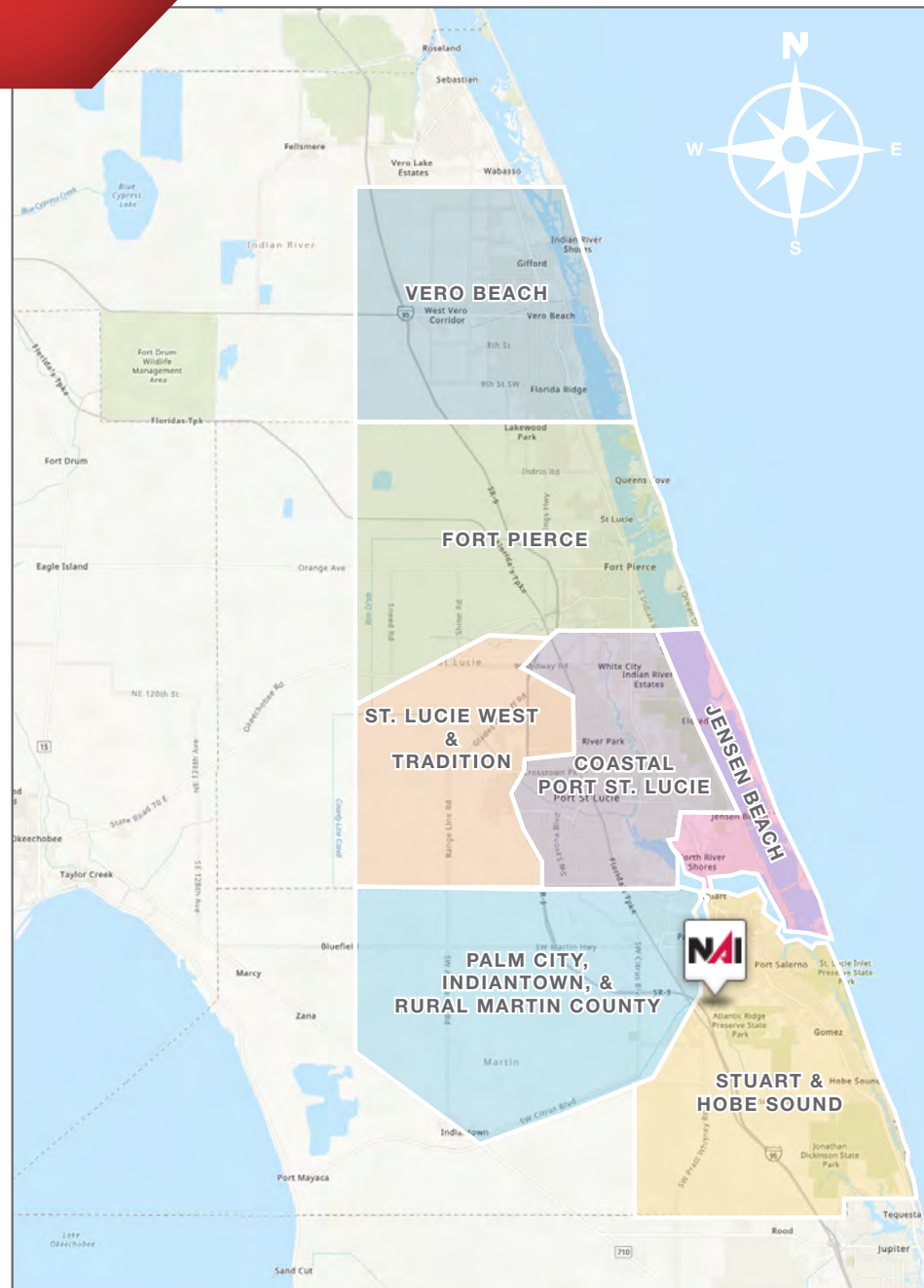
5601 S Kanner Hwy, Stuart, FL 34997

## Property Details

Address:	5601 S Kanner Hwy, Stuart, FL
Pricing:	\$1,200,000
Land Size:	±3.12 Acres
Traffic Count:	44,000 AADT
Zoning:	CG
Future Land Use:	Comm. General
Utility Providers:	Martin County

## Property Overview

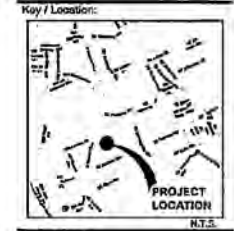
This highly desirable commercial land site is located 1 mile south of the Stuart city limits and 2 miles north of the I-95 interchange at Kanner Highway. Minutes away from the Veterans Memorial Bridge, this site provides easy access to upscale Palm City.



# ±3.12 Acre General Commercial Parcel

5601 S Kanner Hwy, Stuart, FL 34997

# Site Plan



**Project Team:**

**Architect:** FOMER 1001, LLC  
10010 Highway 1, Suite 100  
Fort Myers, Florida, 33907

**Site Planner / Landscape Architect:** Lucido & Associates  
10000 N. US Highway 1, Suite 100  
Fort Myers, Florida, 33907

**Engineer:** CIVTEC Engineering, Inc.  
20111 Highway 1, Suite 100  
Fort Myers, Florida, 33907

**Surveyor:** WORTHAM CONSULTING  
11111 Highway 1, Suite 100  
Fort Myers, Florida, 33907

**Field Engineer:** Bruce R. O'Neil, P.E., Inc.  
10000 N. US Highway 1, Suite 100  
Fort Myers, Florida, 33907

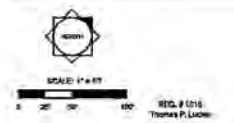
**Professional Seal:** CIVIL ENGINEER  
10000 N. US Highway 1, Suite 100  
Fort Myers, Florida, 33907

## Kanner 5601

Martin County, Florida

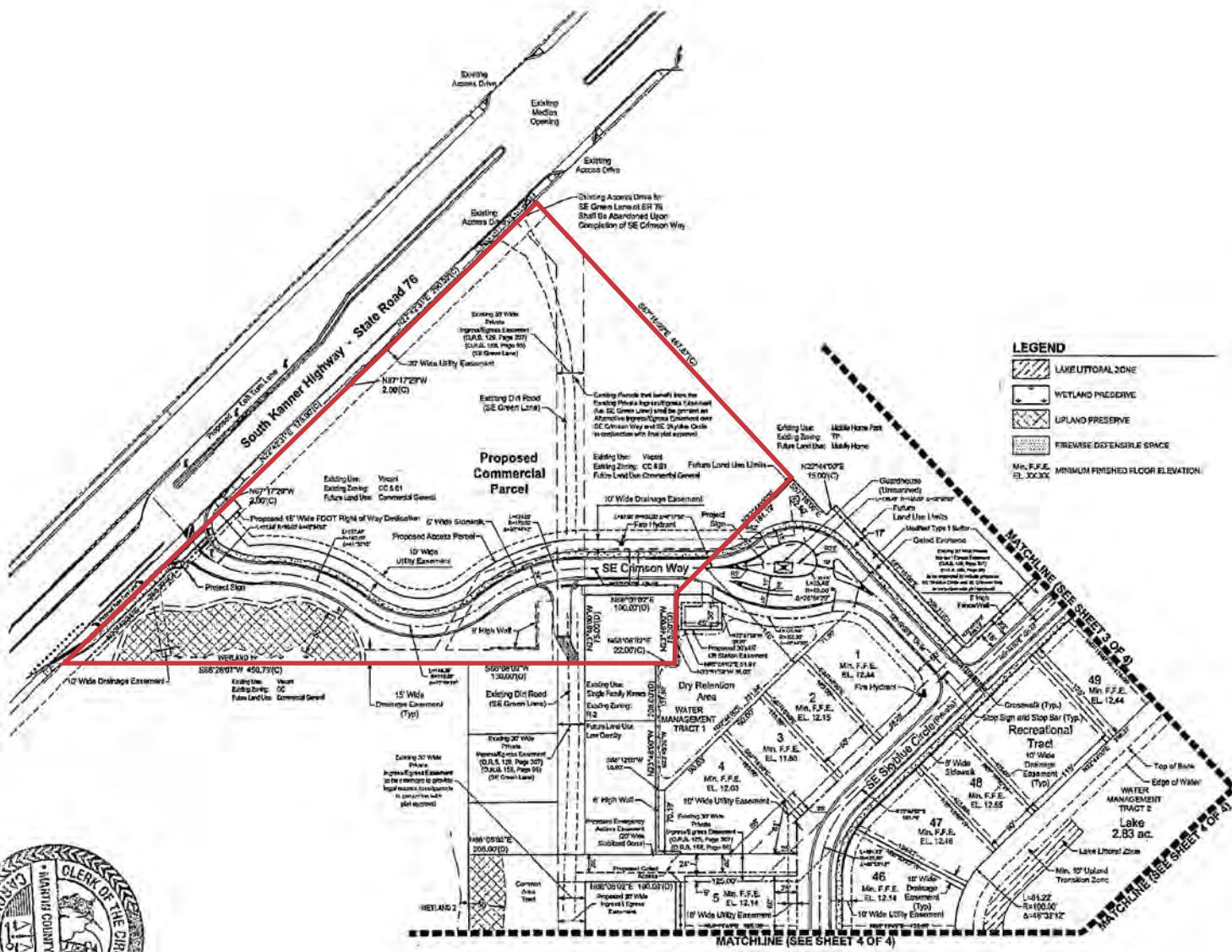
### Final Site Plan

Date	By	Description
1.15.2011	S.L.S.	Initial Submittal
1.13.2011	S.L.S.	1st. Review/Revised
3.27.2011	S.L.S.	2nd. Review/Revised
7.07.2011	S.L.S.	3rd. Review/Revised
7.24.2011	S.L.S.	Final Approval/Revised
8.2.2011	S.L.S.	Final LPA Meeting
9.21.2011	S.L.S.	100% Approved



Designer:	S.L.S.	Sheet
Manager:	A.C.C.	19-026
Project Number:		19-026
Manuscript Number:		
Computer File:	Kanner 5601 12 - Final Site Plan.dwg	

©Copyright 2011. No part of this document may be reproduced or transmitted in any form or by any means, electronic, mechanical, photocopying, recording, or by any information storage and retrieval system, without permission in writing from the copyright owner.





# ±3.12 Acre General Commercial Parcel

5601 S Kanner Hwy, Stuart, FL 34997



**3.12 ACRES**

**Royal Palm Boats**

S KANNER HWY

# ±3.12 Acre General Commercial Parcel

5601 S Kanner Hwy, Stuart, FL 34997



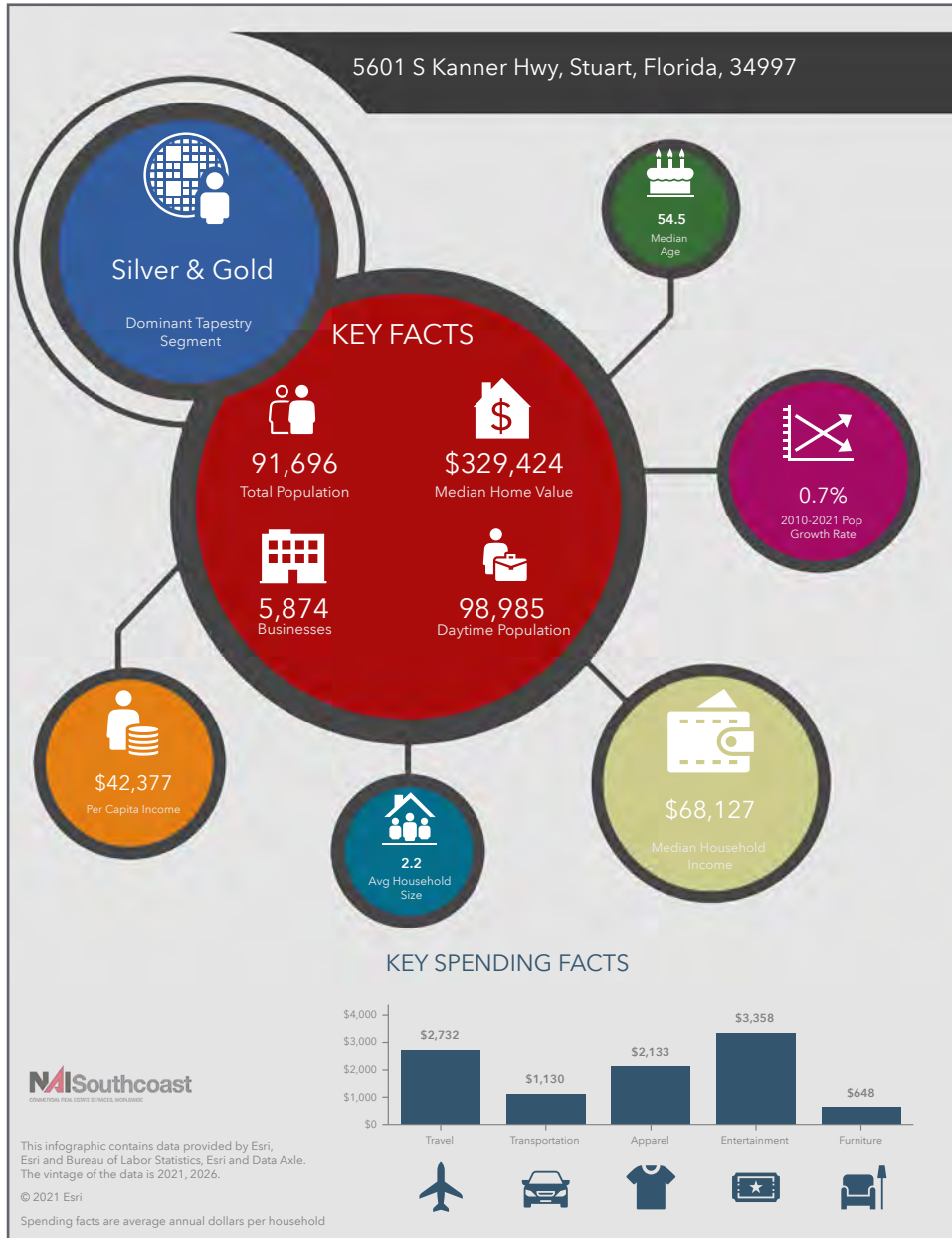
S KANNER HWY

**3.12 ACRES**

# ±3.12 Acre General Commercial Parcel

5601 S Kanner Hwy, Stuart, FL 34997

# 2021 Demographics



## Population

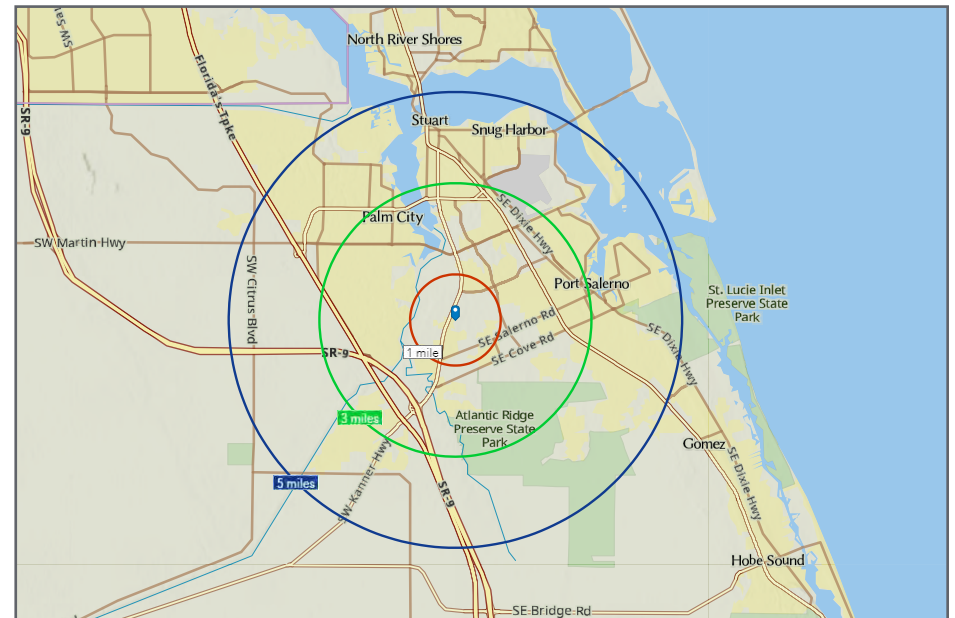
- 1 Mile: 4,020
- 3 Mile: 39,526
- 5 Mile: 91,696

## Average Household Income

- 1 Mile: \$91,189
- 3 Mile: \$94,008
- 5 Mile: \$95,635

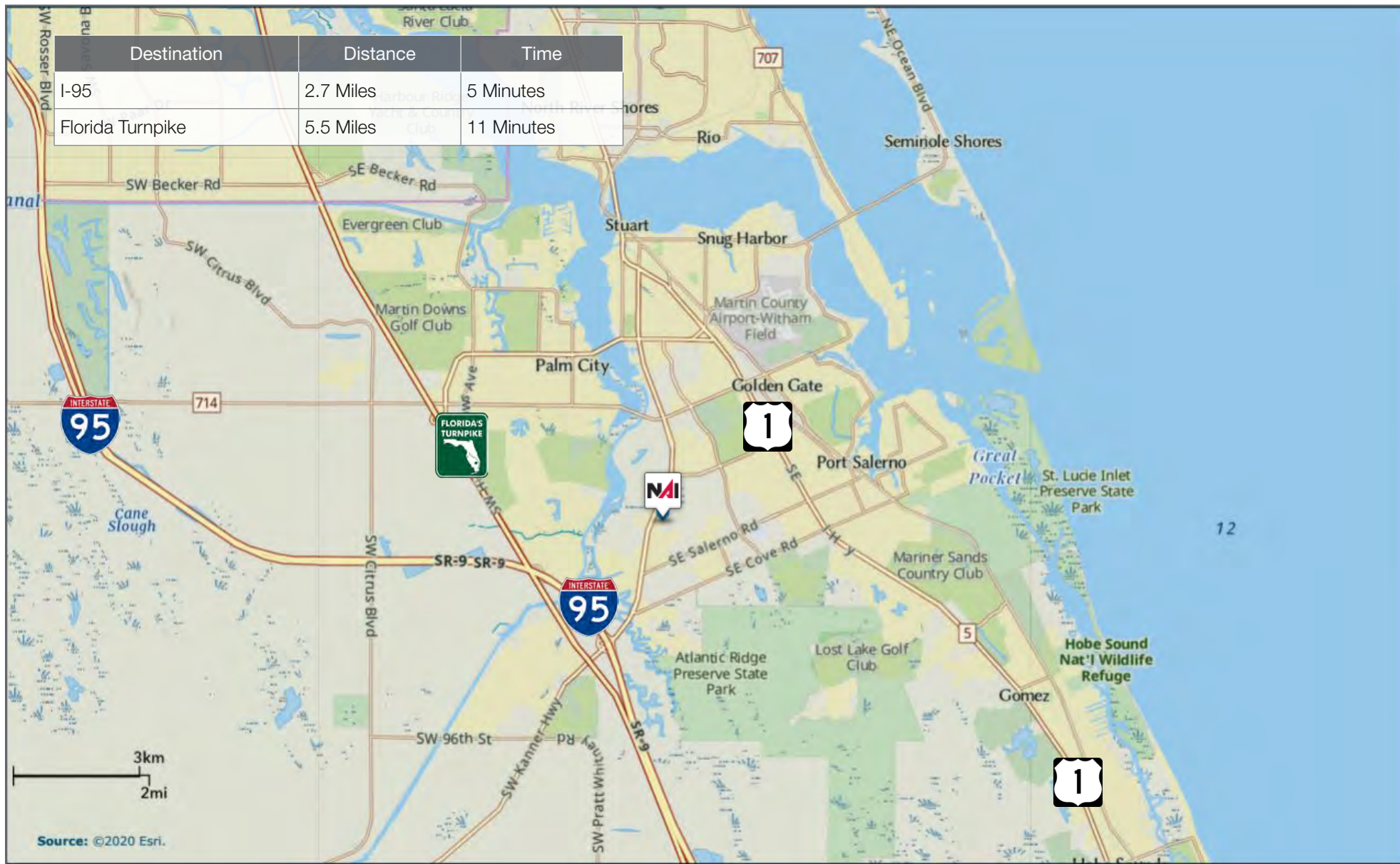
## Median Age

- 1 Mile: 41.8
- 3 Mile: 47.0
- 5 Mile: 54.5



# ±3.12 Acre General Commercial Parcel

5601 S Kanner Hwy, Stuart, FL 34997





# City Overview

Stuart, Florida



Stuart, Florida is located on Florida's East Coast, which borders the St. Lucie River and West of the Indian River. The climate is pleasant with mild winters and warm summers. The annual average temperature is 72 degrees. Annual rainfall averages 70.44 inches.

Stuart is famed for Sail fishing and all other types of sport fishing, you can enjoy Ocean fishing, river and bay fishing, fresh water fishing. The North and South forks of the St. Lucie River are tropical wonderlands for cruises. Stuart has quaint older neighborhoods in the downtown area. There is a mixture of town homes and condominiums. Stuart's successful revitalization program has made the Downtown area a pleasant ambiance, lined with shops and restaurants.

The top major employers are, Martin Memorial Hospital, Vought Aircraft, Municipal Government, and thousands of successful small businesses. The economy is driven by retail service, hospitality, construction and government sectors located throughout the city.

At the present time Stuart is a growing community, annexing new properties north and south of the city, currently 6.25 square miles. Revitalization is in progress in the Potsdam section of the downtown area as well as North of the new Roosevelt Bridge. The new Roosevelt Bridge was completed in 1996, and the Department of Transportation recently finished the Evans Cray Bridge, which leads to Stuart's Public Beaches.

# County Overview

## Martin County, Florida

The cities that make up Martin County are Jensen Beach/Rio, Stuart/Sewall's Point, Hutchinson Island, Hobe Sound, Jupiter/ Tequesta, Palm City, Port Salerno and Indiantown. Martin County is a wonderful place to visit and live, with beaches, golf, fishing and boating. The County boasts arts amenities, quaint downtowns with shops, gourmet dining and galleries, museums, historic places, festivals and more.

### *Martin County is for...*

The golf enthusiast... Martin County is home to over 35 world-class golf courses all within a 15-mile radius. The sun worshiper... The County offers its visitors and residents alike some of the finest beaches on the east coast. The discriminating arts shopper... More than 20 galleries participate in a monthly First Thursday gallery night. Many of these galleries are in the historic downtowns of Stuart, Jensen Beach, Port Salerno and Hobe Sound. The music lover... The historic Lyric Theatre offers a wide-array of fist class talent nearly 300 days a year... This acoustically amazing theatre features concerts for all music lovers, from classical to rock and roll, and theatrical performances by local and national talent.

For the die-hard festivals-goer... There are plenty to choose from and during the best Florida weather you can find. The Port Salerno Seafood Festival, Bookmania, ArtsFest, Pineapple Festival or one of the many festivals throughout the year. The Treasure Coast Children's Museum is a great place for the kids located at Indian Riverside Park which has a fabulous water play area, fishing, and a riverfront view. Often, there are also events in the park including concerts, orchid shows, and more. Indian Riverside Park also features the Maritime and Yachting Museum. Hutchinson Island houses the Elliott Museum which focuses on art, history and technology. Named after prolific inventor Sterling Elliott, the museum houses permanent including Model AA Trucks, early transportation, history of Stuart and surrounding regions and baseball memorabilia. For the more scientifically minded and curious kids, the Florida Oceanographic Coastal Center which offers a fun opportunity to learn more about our local ecosystem and even feed a stingray!





Boyd G Bradfield, Jr.,  
GRI, CCIM, SIOR

Founder  
+1 772 286 6292  
boyd@naisouthcoast.com  
www.naisouthcoast.com

## ±3.12 Acre General Commercial Site 5601 S Kanner Hwy, Stuart, FL 34997



Offered At:

# \$1,200,000