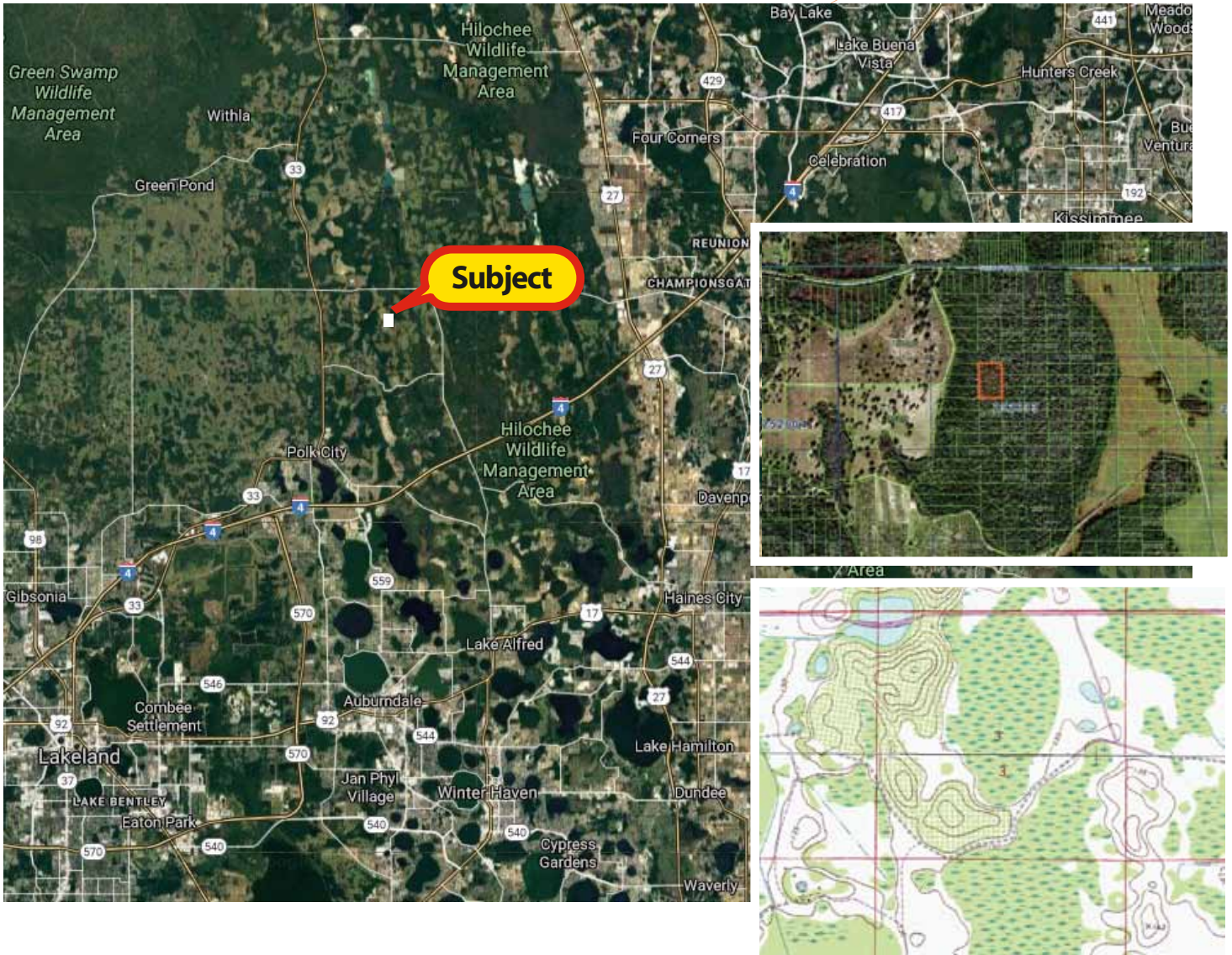


3.75 ACRES IN POLK COUNTY, FLORIDA

***** 6.6 MILES FROM I-4 & 5.21 MILES FROM POLK CITY *****

**8001 Deen Still Road, Polk City, Florida 33868
Polk County Parcel # 25-26-03-000000-032100**



- Sunrise Acres Subdivision.
- Soil Code: Samsula muck, frequently ponded, 0 to 1 percent slopes.
- 130 feet M/L above MSL (mean sea level). Adjacent arable farm land.
- Cash.

\$5,900



WAYNE GWILLIAM, REALTOR®
786.351.0098
wayne4florida1@yahoo.com

RICK SWENTEK, P.A., A.L.C.
305.773.5363
rickswen@bellsouth.net

FLORIDA 1 REALTY Office 305.453.0109
florida1realtyinc.com

103400 Overseas Hwy. Suite 250-D, Key Largo, FL 33037

The information contained herein is deemed accurate however no warranty either expressed or implied is hereby given.