

±4,130 SF Waterfront Office For Sale
401 SE Osceola Street, Stuart, Florida 34994

NAISouthcoast



St. Lucie River



Presented by

Nikolaus M. Schroth, CCIM
Associate Broker | Principal
+1 772 403 3752
nikschroth@naisouthcoast.com
www.naisouthcoast.com

J. Jeffery Allman, Jr.
Associate
+1 772 283 1555
jeff@naisouthcoast.com
www.naisouthcoast.com

FOR SALE:

\$875,000 (\$211.86/SF)

±4,130 SF Waterfront Office For Sale

401 SE Osceola Street, Stuart, Florida 34994

Property Details

Property Address:	401 SE Osceola Street Stuart, FL 34994
Sale Price:	\$875,000 (\$211.86/SF)
Building Size:	±8,797 SF
Unit Size:	±4,130 SF
Year Built:	1985
2020 Real Estate Taxes:	\$12,110.51

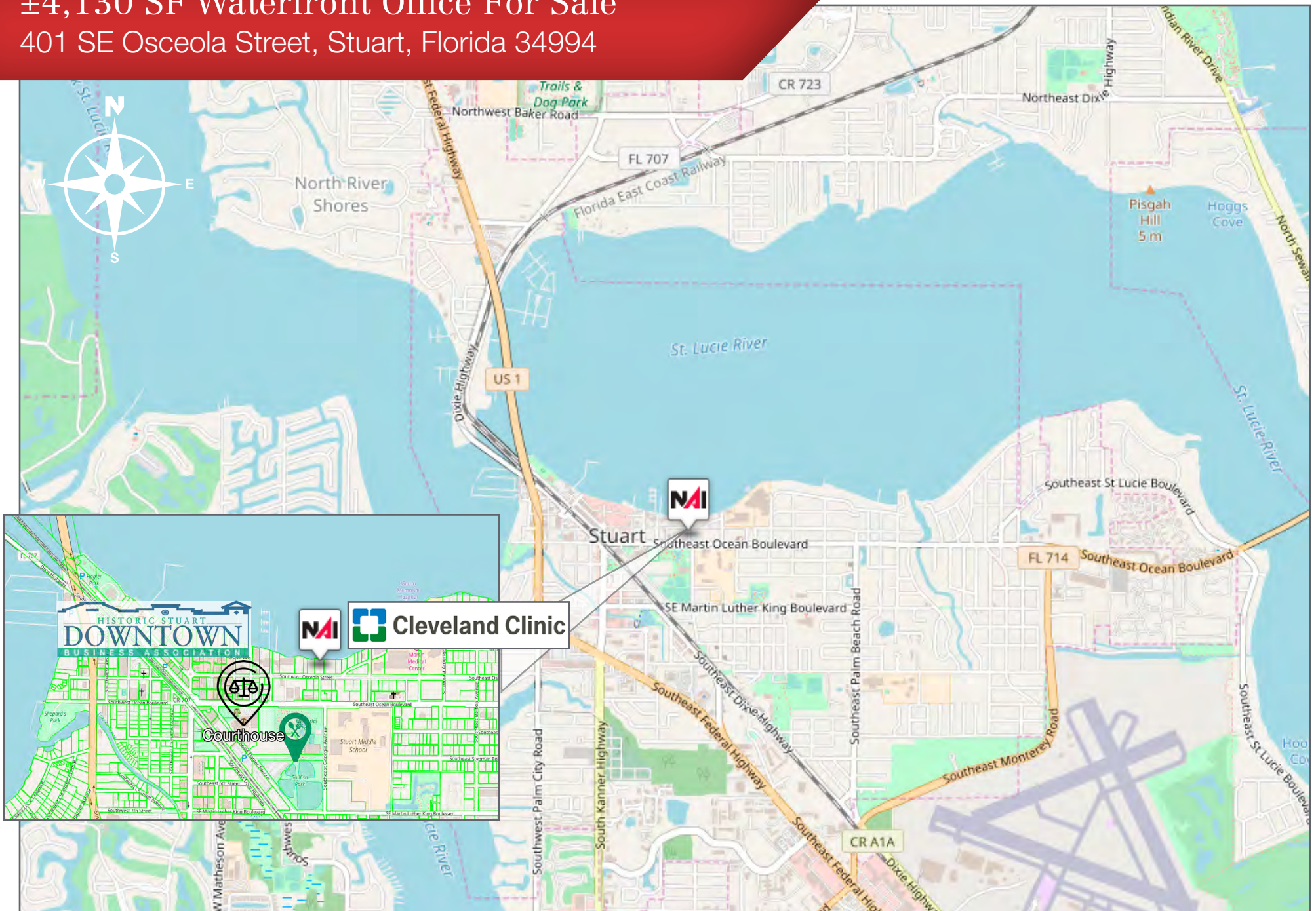
Property Overview

Excellent opportunity to purchase a rare waterfront condominium located on “Wide Water” West of the Cleveland Clinic Hospital and just East of Downtown Stuart. The layout consists of multiple office suites, reception area, storage room, conference room, kitchen and more. Great location in the heart of Downtown Stuart near the hospital, medical offices, shops and restaurants with easy access to Jensen Beach, Palm City and Port Saint Lucie.



±4,130 SF Waterfront Office For Sale

401 SE Osceola Street, Stuart, Florida 34994



±4,130 SF Waterfront Office For Sale

401 SE Osceola Street, Stuart, Florida 34994

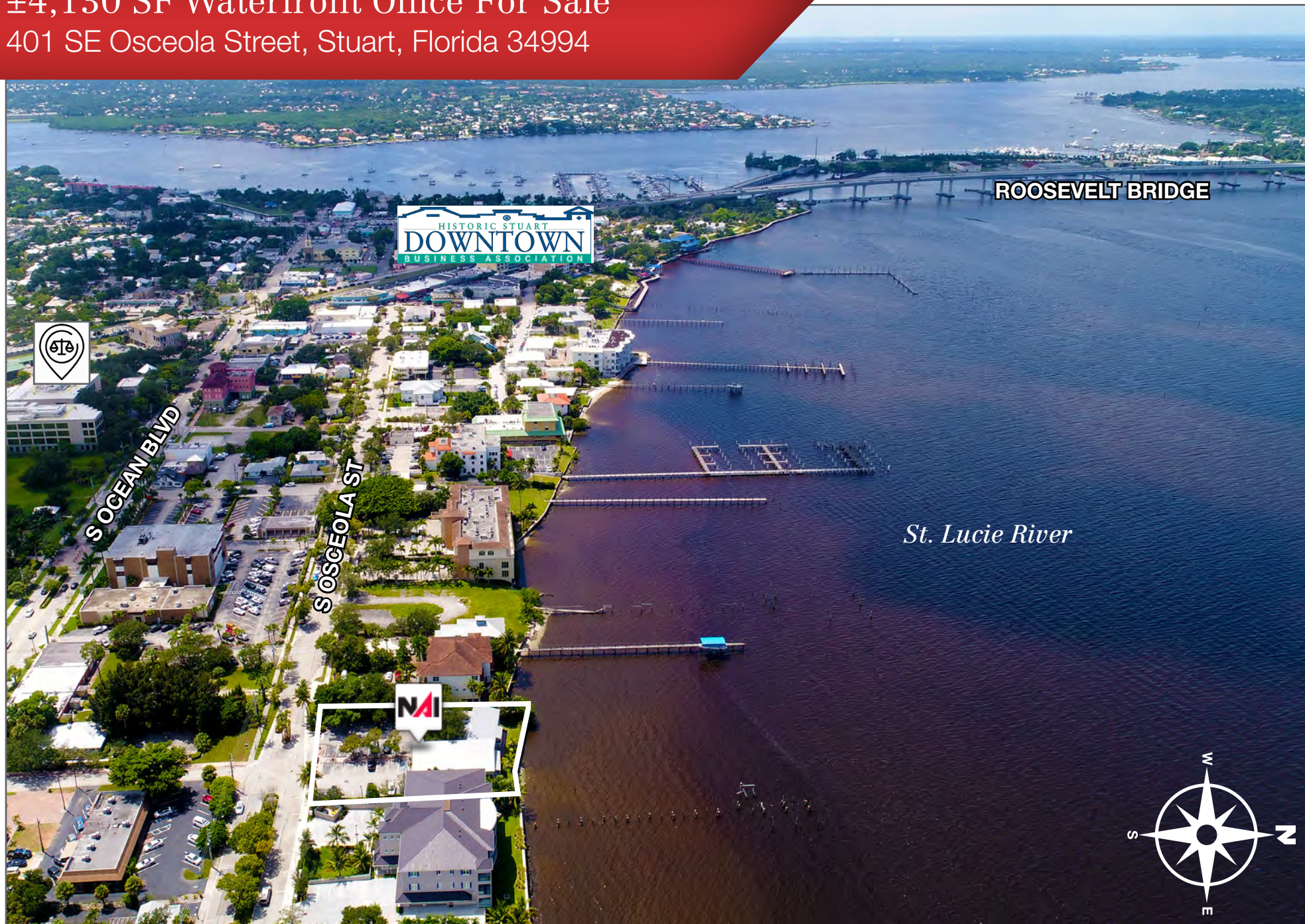


St. Lucie River



±4,130 SF Waterfront Office For Sale

401 SE Osceola Street, Stuart, Florida 34994



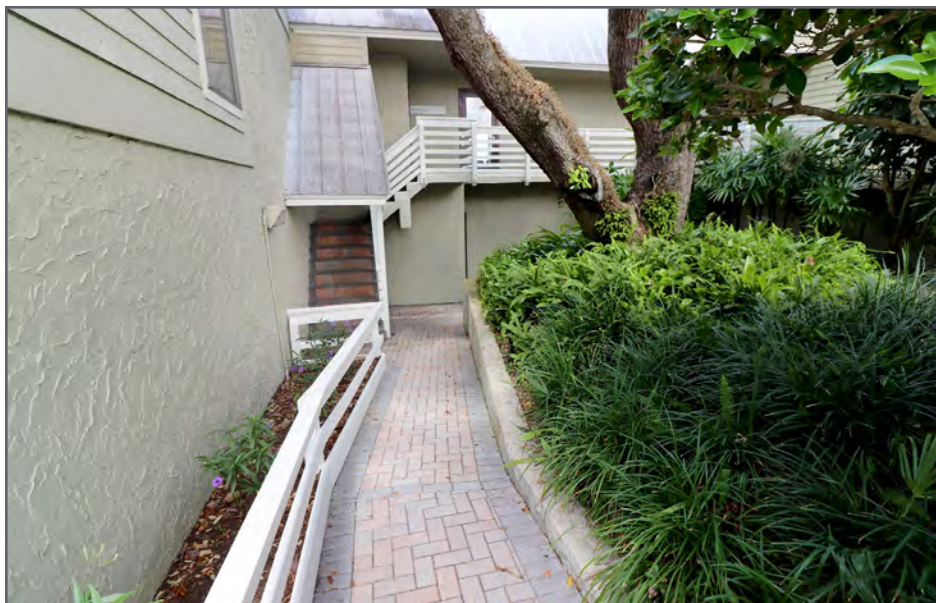
±4,130 SF Waterfront Office For Sale

401 SE Osceola Street, Stuart, Florida 34994



St. Lucie River

±4,130 SF Waterfront Office For Sale
401 SE Osceola Street, Stuart, Florida 34994



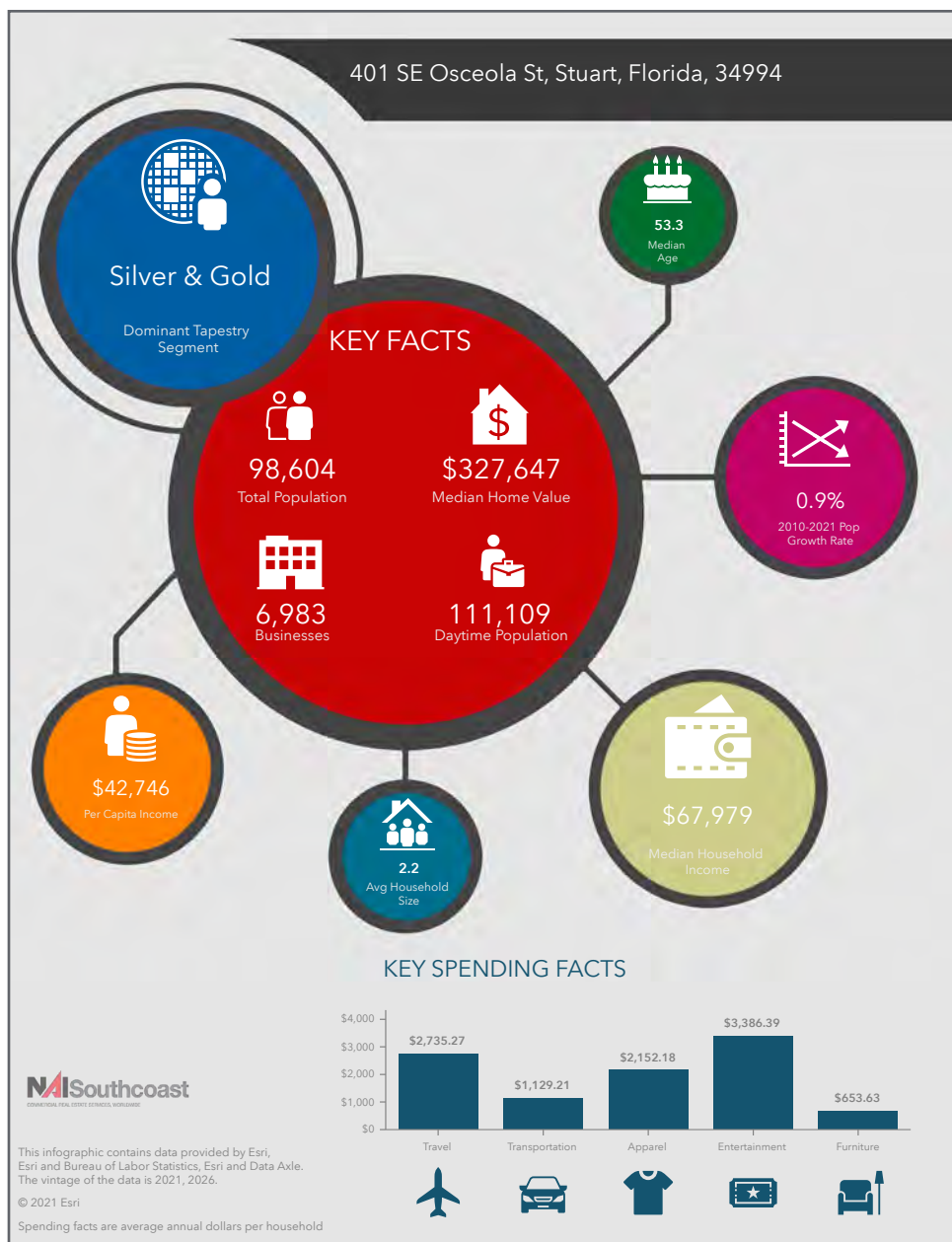
±4,130 SF Waterfront Office For Sale
401 SE Osceola Street, Stuart, Florida 34994



±4,130 SF Waterfront Office For Sale

401 SE Osceola Street, Stuart, Florida 34994

2021 Demographics



Population

- 1 Mile: 3,621
- 3 Mile: 47,414
- 5 Mile: 98,604

Average Household Income

- 1 Mile: \$63,718
- 3 Mile: \$89,944
- 5 Mile: \$96,218

Median Age

- 1 Mile: 48.0
- 3 Mile: 53.1
- 5 Mile: 53.3



City Overview

City of Stuart, Florida



Stuart, Florida is located on Florida's East Coast, which borders the St. Lucie River and West of the Indian River. The climate is pleasant with mild winters and warm summers. The annual average temperature is 72 degrees. Annual rainfall averages 70.44 inches.

Stuart is famed for Sail fishing and all other types of sport fishing, you can enjoy Ocean fishing, river and bay fishing, fresh water fishing. The North and South forks of the St. Lucie River are tropical wonderlands for cruises. Stuart has quaint older neighborhoods in the downtown area. There is a mixture of town homes and condominiums. Stuart's successful revitalization program has made the Downtown area a pleasant ambiance, lined with shops and restaurants.

The top major employers are, Martin Memorial Hospital, Vought Aircraft, Municipal Government, and thousands of successful small businesses. The economy is driven by retail service, hospitality, construction and government sectors located throughout the city.

At the present time Stuart is a growing community, annexing new properties north and south of the city, currently 6.25 square miles. Revitalization is in progress in the Potsdam section of the downtown area as well as North of the new Roosevelt Bridge. The new Roosevelt Bridge was completed in 1996, and the Department of Transportation recently finished the Evans Crary Bridge, which leads to Stuart's Public Beaches.

County Overview

Martin County, Florida

The cities that make up Martin County are Jensen Beach/Rio, Stuart/Sewall's Point, Hutchinson Island, Hobe Sound, Jupiter/Tequesta, Palm City, Port Salerno and Indiantown. Martin County is a wonderful place to visit and live, with beaches, golf, fishing and boating. The County boasts arts amenities, quaint downtowns with shops, gourmet dining and galleries, museums, historic places, festivals and more.

Martin County is for...

The golf enthusiast... Martin County is home to over 35 world-class golf courses all within a 15-mile radius. The sun worshiper... The County offers its visitors and residents alike some of the finest beaches on the east coast. The discriminating arts shopper... More than 20 galleries participate in a monthly First Thursday gallery night. Many of these galleries are in the historic downtowns of Stuart, Jensen Beach, Port Salerno and Hobe Sound. The music lover... The historic Lyric Theatre offers a wide-array of first class talent nearly 300 days a year... This acoustically amazing theatre features concerts for all music lovers, from classical to rock and roll, and theatrical performances by local and national talent.



For the die-hard festivals-goer... There are plenty to choose from and during the best Florida weather you can find. The Port Salerno Seafood Festival, Bookmania, ArtsFest, Pineapple Festival or one of the many festivals throughout the year. The Treasure Coast Children's Museum is a great place for the kids located at Indian Riverside Park which has a fabulous water play area, fishing, and a riverfront view. Often, there are also events in the park including concerts, orchid shows, and more. Indian Riverside Park also features the Maritime and Yachting Museum. Hutchinson Island houses the Elliott Museum which focuses on art, history and technology. Named after prolific inventor Sterling Elliott, the museum houses permanent including Model AA Trucks, early transportation, history of Stuart and surrounding regions and baseball memorabilia. For the more scientifically minded and curious kids, the Florida Oceanographic Coastal Center which offers a fun opportunity to learn more about our local ecosystem and even feed a stingray!



LISTING AGENTS



Nikolaus M. Schroth, CCIM

Broker Associate | Principal
+1 772 286 6292
nikschroth@naisouthcoast.com
www.naisouthcoast.com



J. Jeffery Allman, Jr.

Associate
+1 772 286-6292 c +1 772 283 1555
jeff@naisouthcoast.com
www.naisouthcoast.com

±4,130 SF Waterfront Office For Sale 401 SE Osceola Street, Stuart, Florida 34994



FOR SALE:

\$875,000 (\$211.86/SF)