

BUILD-TO-SUIT OPPORTUNITY

Pebble Ridge Industrial Park

472± AC Land | 2 Phase Site
Frostproof, FL

*Will sell entire site or individual parcels starting
at 10 acres to 100 acres.*



\$55,000 PER USABLE ACRE

For more information, please contact:



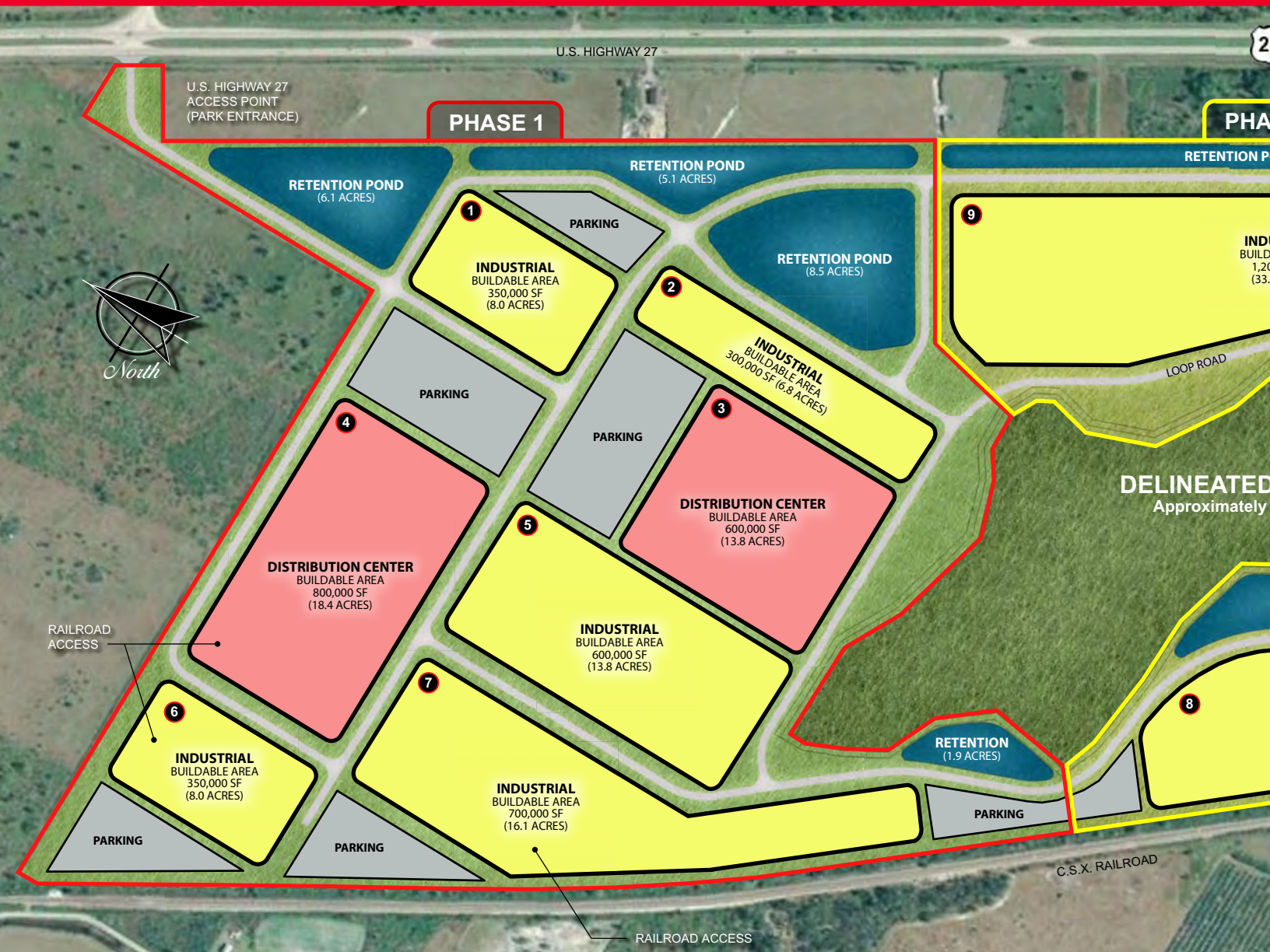
Jared Bonshire
Executive Director, Industrial Brokerage
Direct +1 407 541 4414
Mobile +1 407 617 9193
jared.bonshire@cushwake.com



David Perez
Executive Director, Industrial Brokerage
Direct +1 407 541 4435
Mobile +1 407 595 6917
david.perez@cushwake.com

Cushman & Wakefield of Florida, Inc.
20 North Orange Avenue
Suite 300
Orlando, Florida 32801
cushmanwakefield.com

Pebble Ridge Industrial Park



Pebble Ridge Industrial Park

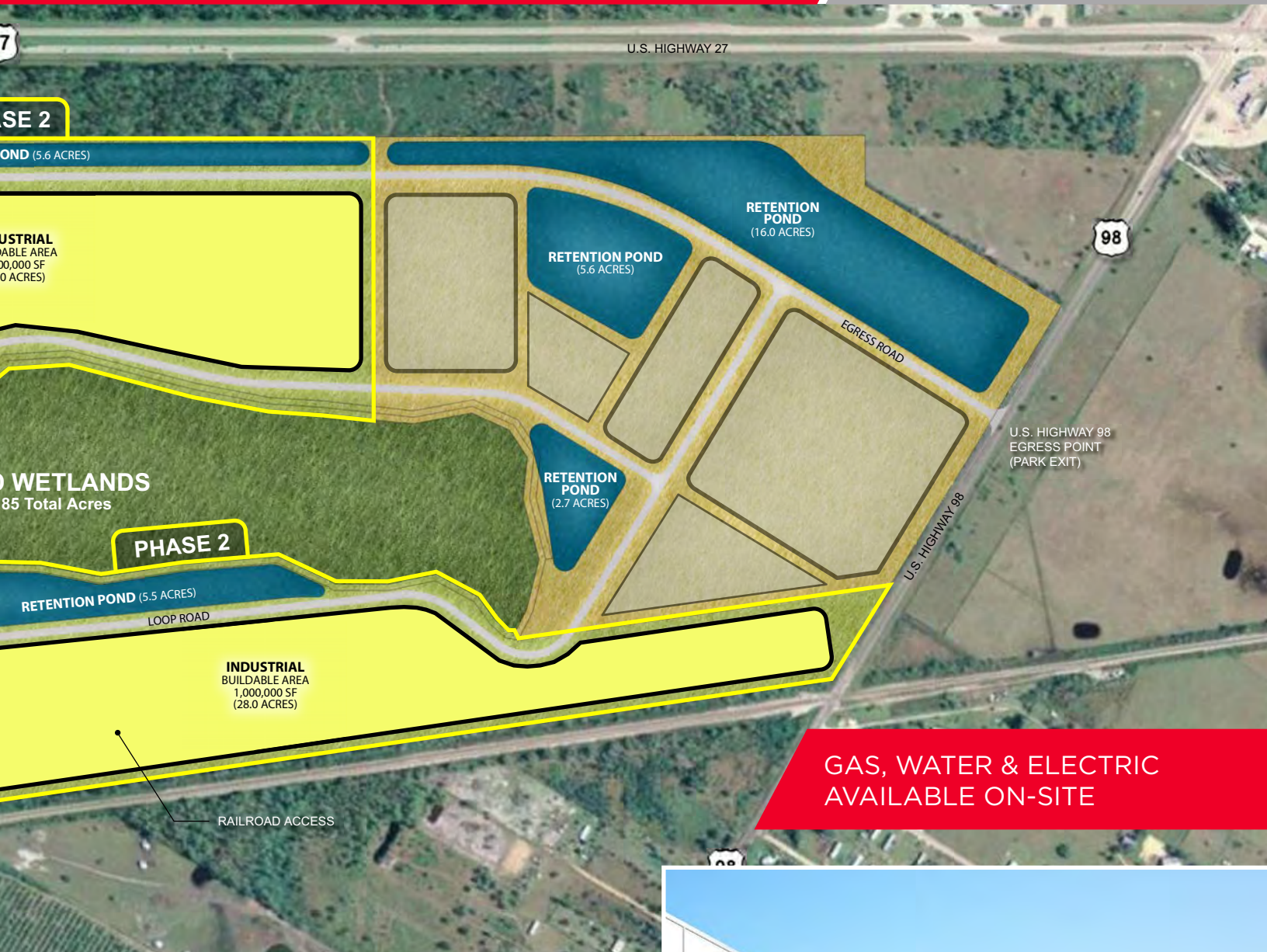
This site offers the ability to purchase individual sites or a bulk land purchase. The owner is also well-positioned to offer a build-to-suit for sale or lease.

Property Information

The Pebble Ridge Industrial Park, located in Frostproof, Florida, is a full scale three phase planned industrial park that offers great logistical efficiency, primed for future development and growth. Adjacent to the heavily travelled Highway 27, used for statewide distribution to and from Miami, with great access to the Florida Turnpike, Highway 60 (for Tampa distribution), and CSX railroad access, this location offers superior logistical schematics.

Pebble Ridge Industrial Park is unique in its ability to provide an all-inclusive industrial development. Central Florida has a limited amount of industrial land, particularly sites that will accommodate larger users. Pebble Ridge Industrial Park has the ability to build over 20 million square feet of industrial space. It also has unmatched flexibility to meet any demand from a potential tenant/buyer in the market.

The City of Frostproof provides a relatively untapped and under utilized work force with lower wages than Tampa and Orlando. Located in Polk County, Pebble Ridge also offers the opportunity for substantial business incentives. With these unique features, Frostproof is well positioned to accommodate the corporate relocation of large distribution companies in need of a Central Florida hub to handle distribution throughout the state.



**GAS, WATER & ELECTRIC
AVAILABLE ON-SITE**

Phase I Site Statistics

Building Square Feet	3,700,000 SF
Projected Buildable Area	168.4 Acres
Retention Ponds	21.6 Acres
Total Acreage of Phase I	190.0 Acres

Phase II Site Statistics

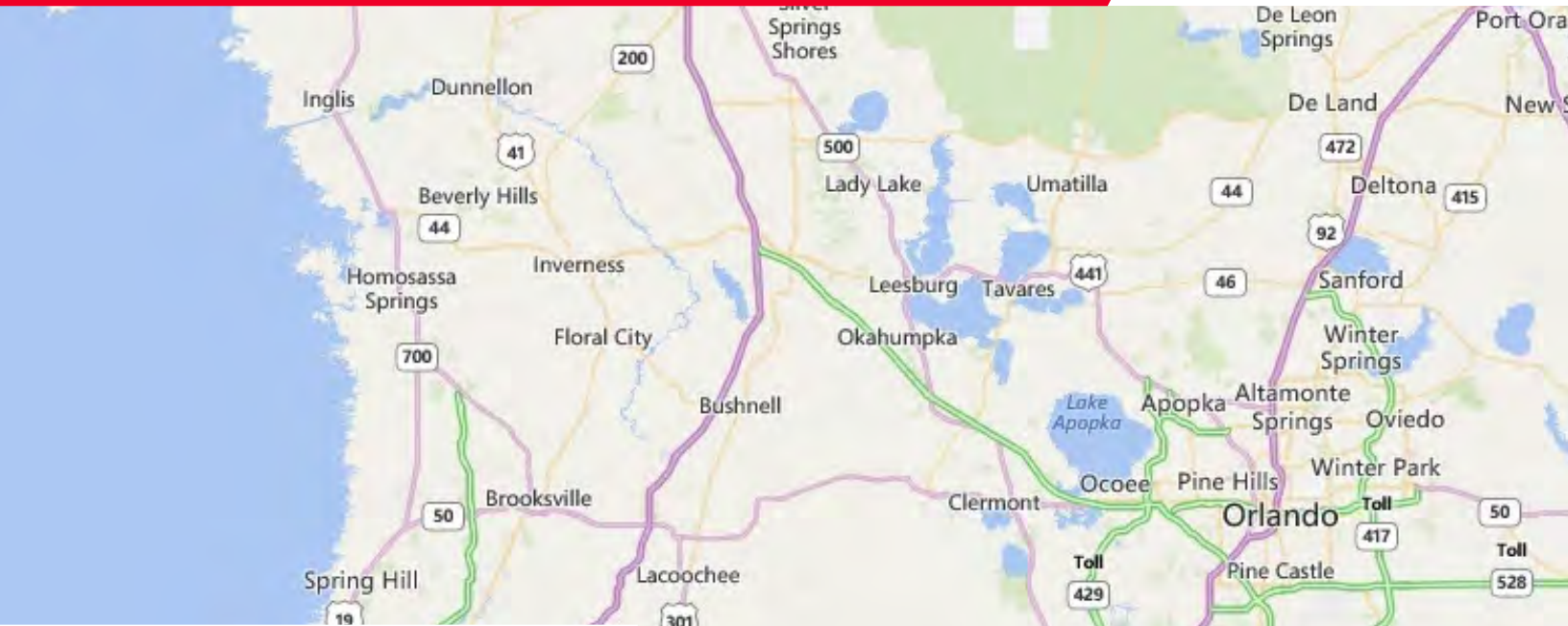
Building Square Feet	2,200,000 SF
Projected Buildable Area	110.9 Acres
Retention Ponds	11.1 Acres
Total Acreage of Phase II	122.0 Acres

Overall Site Statistics

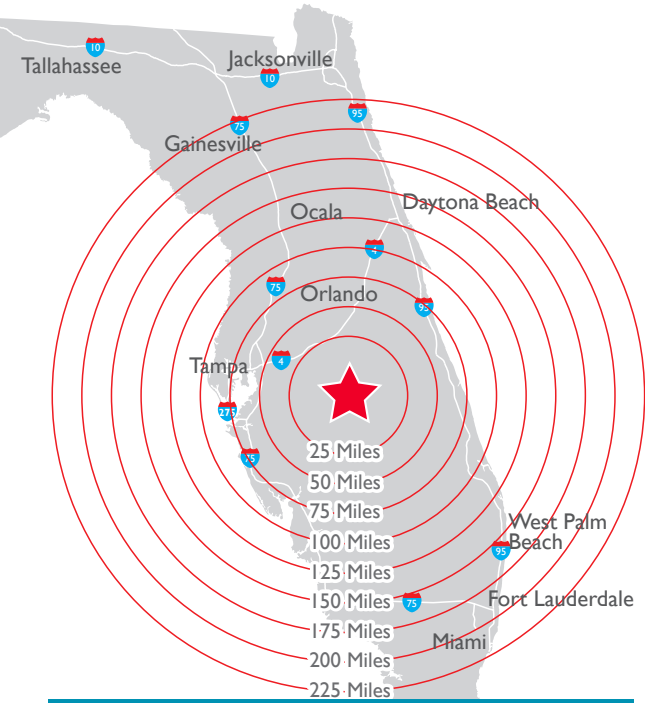
Total Developed Area	312.0 Acres
Delineated Wetlands	85.0 Acres
Ponds and Open Space	75.0 Acres
Total Acreage of Entire Property	472.0 Acres



**EXCELLENT LOCATION
FOR BUILD-TO-SUITS**

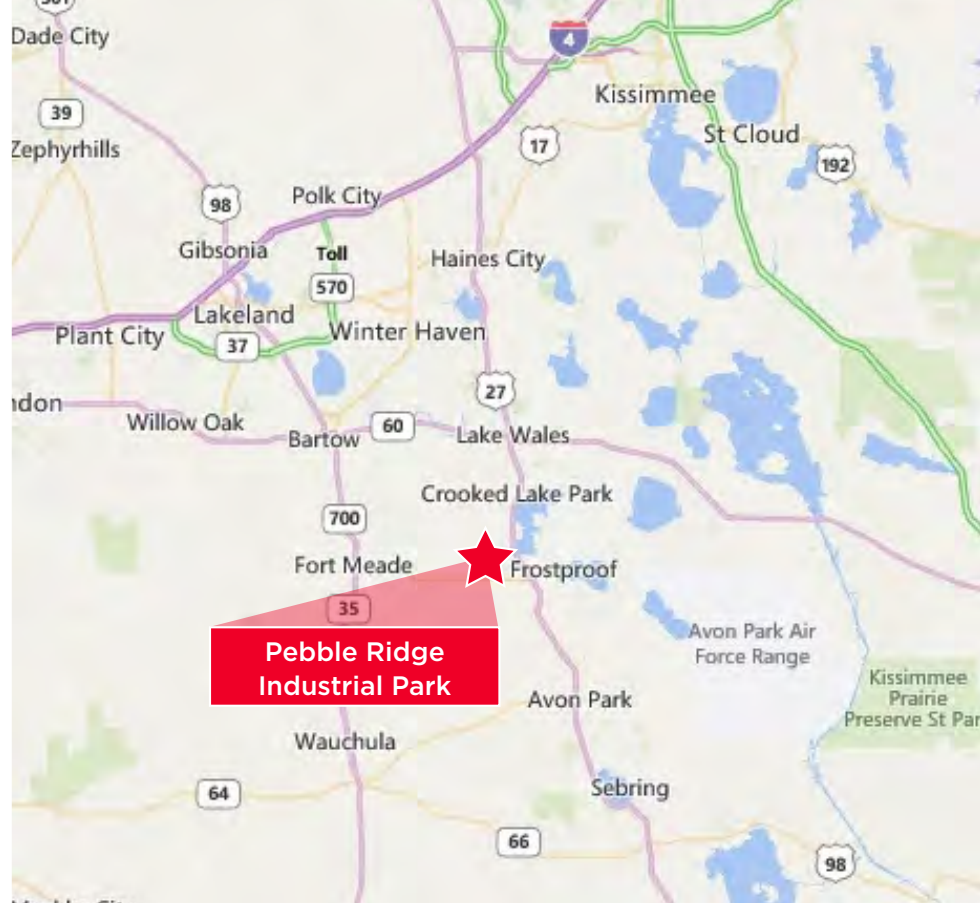


Statewide Logistics Advantage



Drive Times

Distance to Interstate 4	40 mi. 52 min.
Distance to Miami	190 mi. 3 hr. 30 min.



For more information, please contact:



Jared Bonshire
Executive Director, Industrial Brokerage
 Direct +1 407 541 4414
 Mobile +1 407 617 9193
jared.bonshire@cushwake.com



David Perez
Executive Director, Industrial Brokerage
 Direct +1 407 541 4435
 Mobile +1 407 595 6917
david.perez@cushwake.com

Cushman & Wakefield of Florida, Inc.
 20 North Orange Avenue
 Suite 300
 Orlando, Florida 32801
cushmanwakefield.com

The depiction in the included photograph of any person, entity, sign, logo or property, other than Cushman & Wakefield's (C&W) client and the property offered by C&W, is incidental only, and is not intended to connote any affiliation, connection, association, sponsorship or approval by or between that which is incidentally depicted and C&W or its client. This listing shall not be deemed an offer to lease, sublease or sell such property; and, in the event of any transaction for such property, no commission shall be earned by or payable to any cooperating broker except if otherwise provided pursuant to the express terms, rates and conditions of C&W's agreement with its principal, if, as and when such commission (if any) is actually received from such principal. (A copy of the rates and conditions referred to above with respect to this property is available upon request.)