

FOR SALE



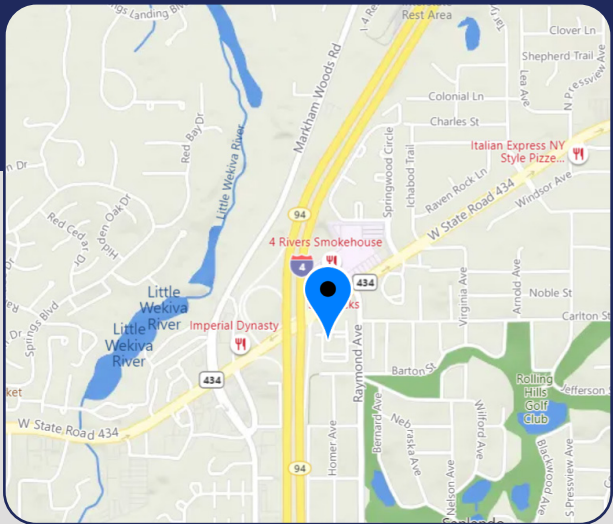
OFFICE OR MEDICAL BUILDING

1939 Boothe Circle, Longwood, FL 32750

\$720,000

Total Size of Building:	3,489± SF
Year Built:	1990
Zoning:	OP (Office Professional), Seminole County

- > 3,489± SF building
- > Constructed in 1990, well-maintained (new roof installed 2019)
- > Great location for office or medical professionals
- > Entire building available for owner/occupant (currently occupied; lease expires 6/30/22)
- > Quick access to I-4, SR 434, and SR 436
- > Surrounded by upscale residential communities, dining, and shopping
- > Excellent parking at 5/1,000 SF plus shared within the park
- > Parcel ID# 02-21-29-513-0000-0040



Christi Davis, CCIM
 D 407.206.5732
 C 407.694.5179
 christi@bywater.com



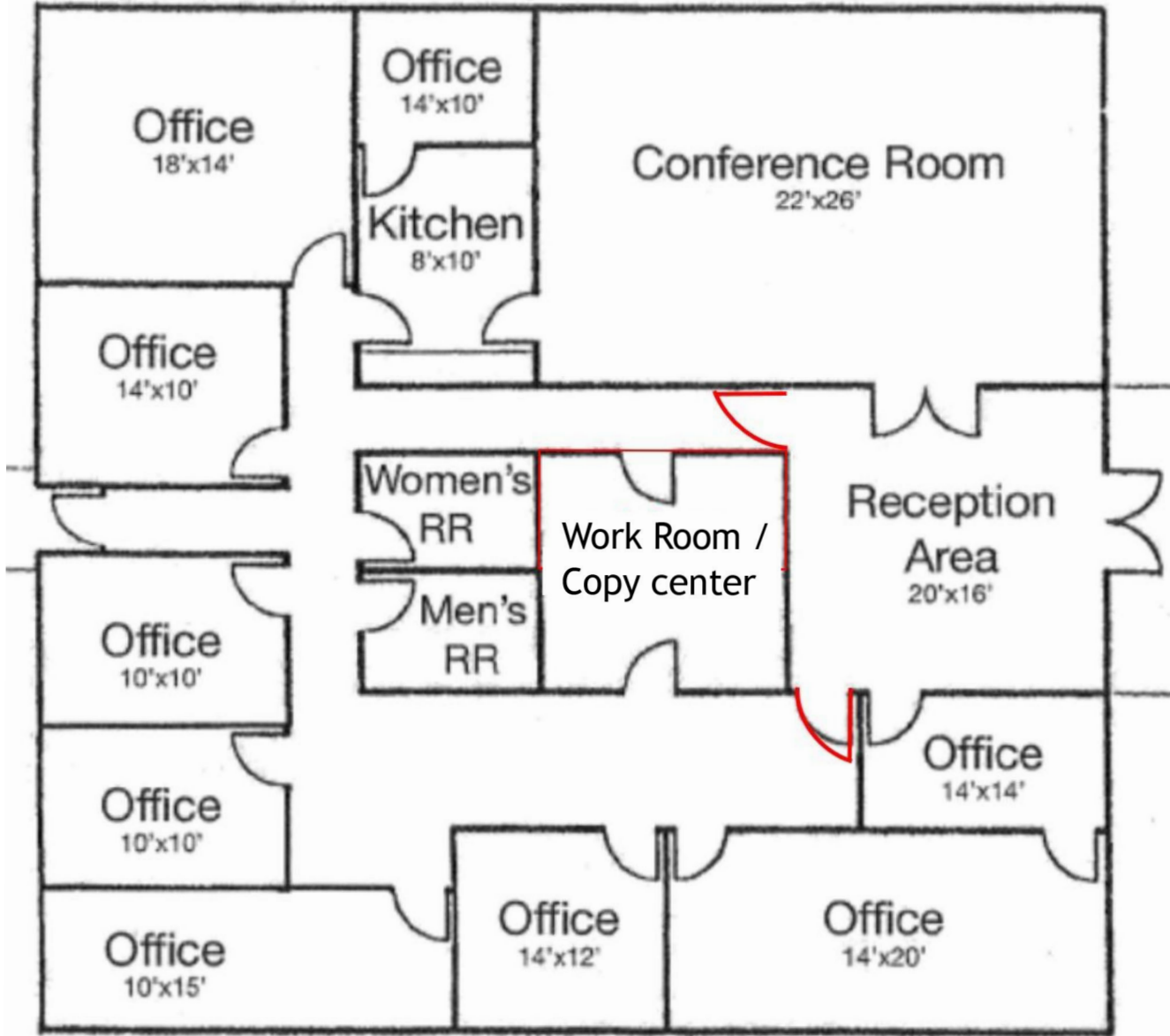
105 E Robinson Street
 Suite 200
 Orlando, FL 32801
 407.206.7300 Main
 www.bywater.com

OFFICE OR MEDICAL BUILDING

1939 Boothe Circle, Longwood, FL 32750

FLOORPLAN

DIMENSIONS ARE APPROXIMATE



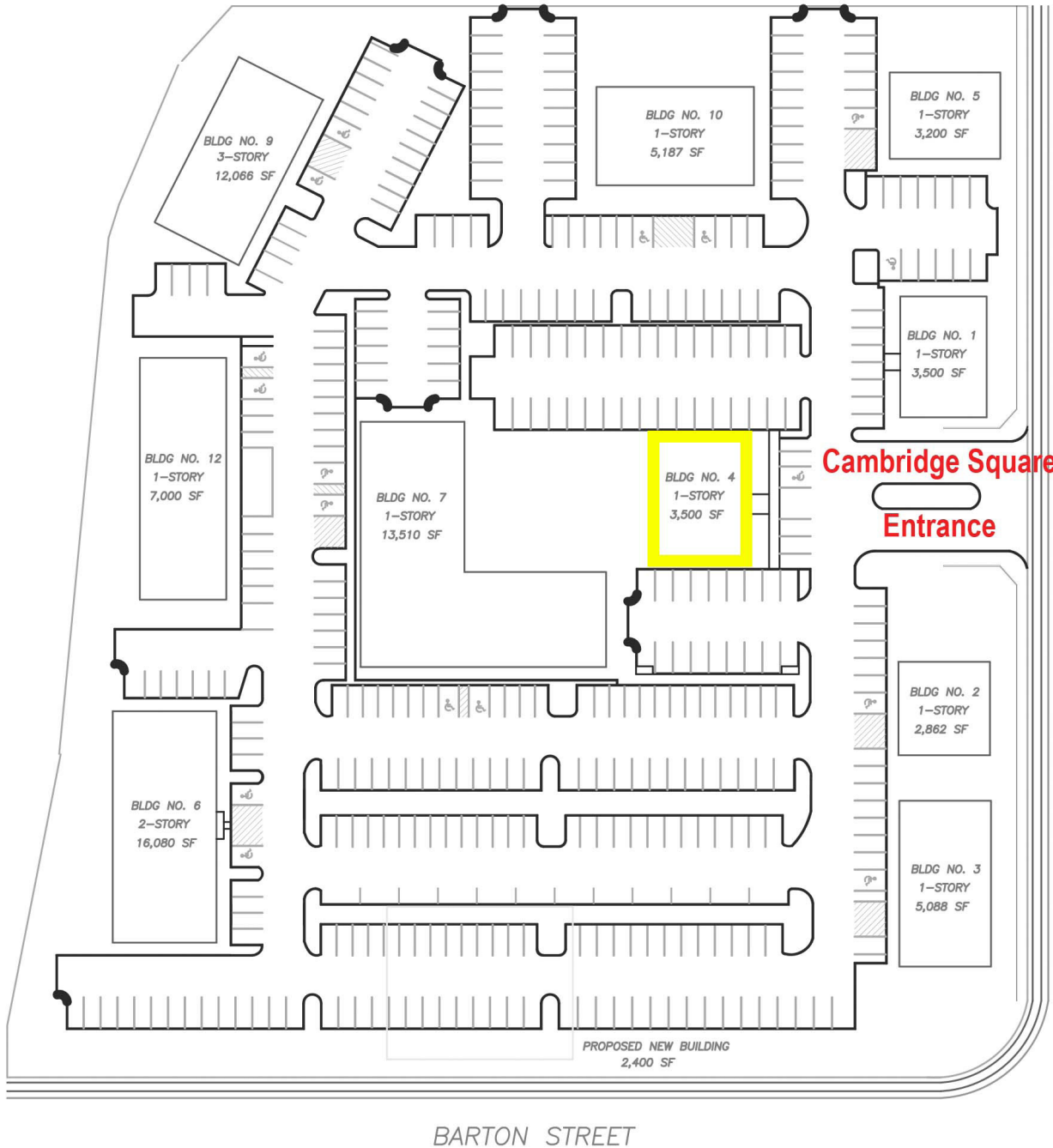
105 E Robinson Street, Suite 200 | Orlando, FL 32801 | 407.206.7300 | www.bywater.com

The information contained herein was obtained from sources deemed reliable and is assumed to be correct. It is not guaranteed by The Bywater Company.

OFFICE OR MEDICAL BUILDING

1939 Boothe Circle, Longwood, FL 32750

SITE PLAN



105 E Robinson Street, Suite 200 | Orlando, FL 32801 | 407.206.7300 | www.bywater.com

The information contained herein was obtained from sources deemed reliable and is assumed to be correct. It is not guaranteed by The Bywater Company.