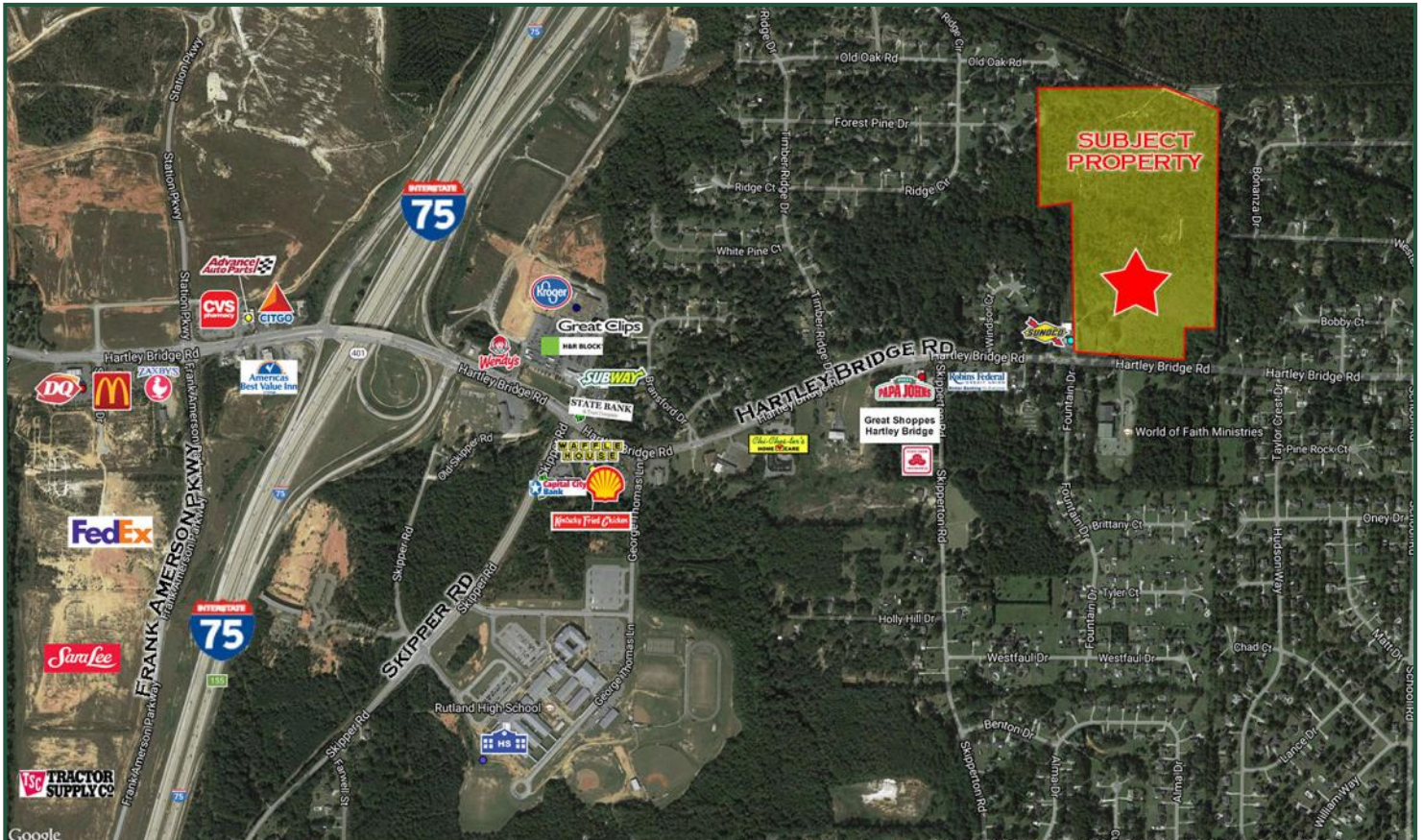


49 ± Acres
 3939 Hartley Bridge Rd
 Macon, GA 31216



DESCRIPTION: 49 ± acres in South Bibb County. 1 mile east of I-75

LOT SIZE: 49 ± Acres, Can be divided

ZONING: PDE

TRAFFIC: 11,300 Vehicles per day

NOTES: Possible owner financing. Multi-family, Residential, Commercial, Senior Housing, Storage are just some of the many uses for this property.

DEMOGRAPHICS

2020	1 mile	3 mile	5 mile
Population	2,176	15,811	40,637
Avg. HH Income	\$85,275	\$73,243	\$59,895
Median Age	39.9	35.8	34.4

Reduced Price: \$12,500 per acre
~~**Sales Price: \$25,000/per acre**~~

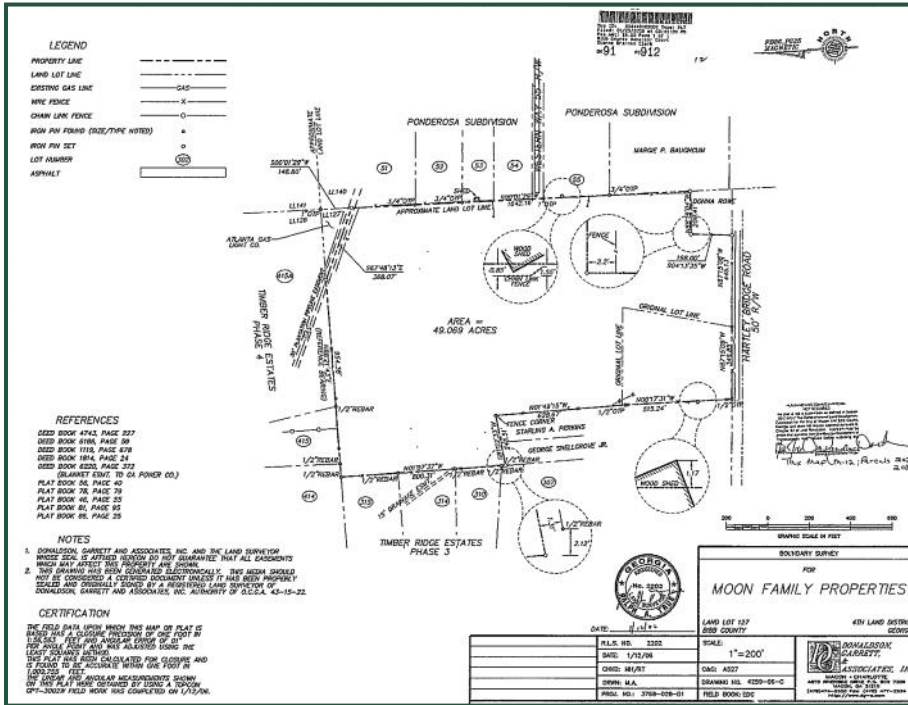
FOR MORE INFORMATION CONTACT

Trip Wilhoit, CCIM, ALC
 478-749-2159 (O)
 478-960-4080 (C)
trip@fickling.com

Patty Burns, CCIM, ALC
 478-746-9421 (O)
 478-951-5100 (C)
patty@fickling.com

commercial.fickling.com

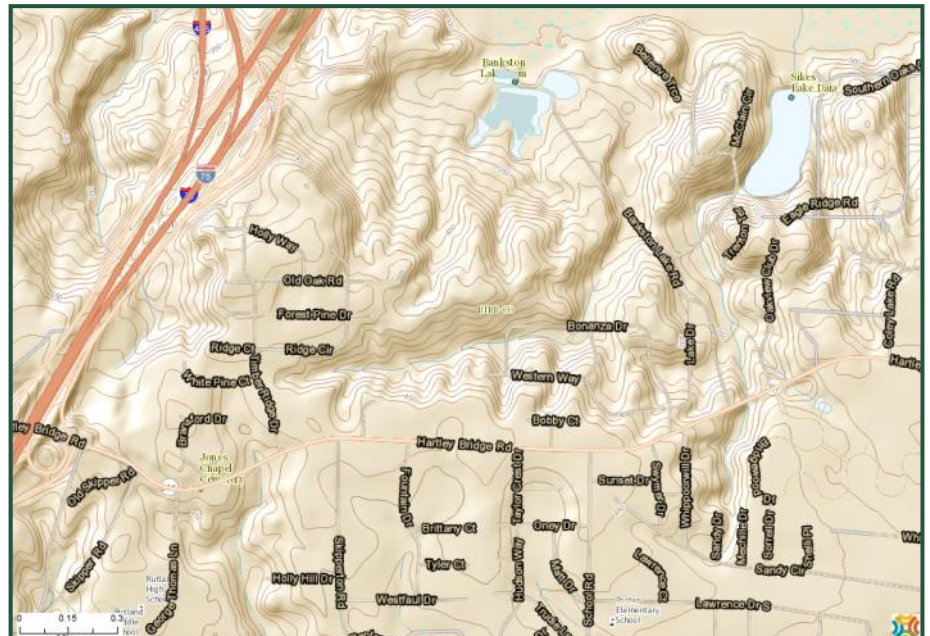
49 ± Acres
 3939 Hartley Bridge Rd
 Macon, GA 31216



PLAT



TOPO



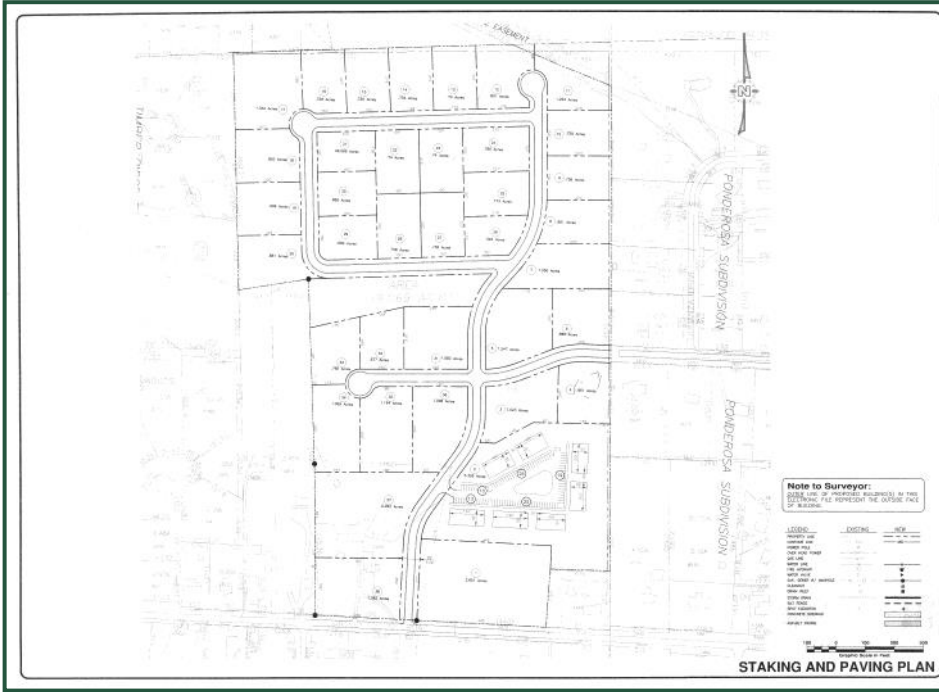
**FOR MORE
 INFORMATION
 CONTACT**

Trip Wilhoit, CCIM, ALC
 478-749-2159 (O)
 478-960-4080 (C)
trip@fickling.com

Patty Burns, CCIM, ALC
 478-746-9421 (O)
 478-951-5100 (C)
patty@fickling.com

commercial.fickling.com

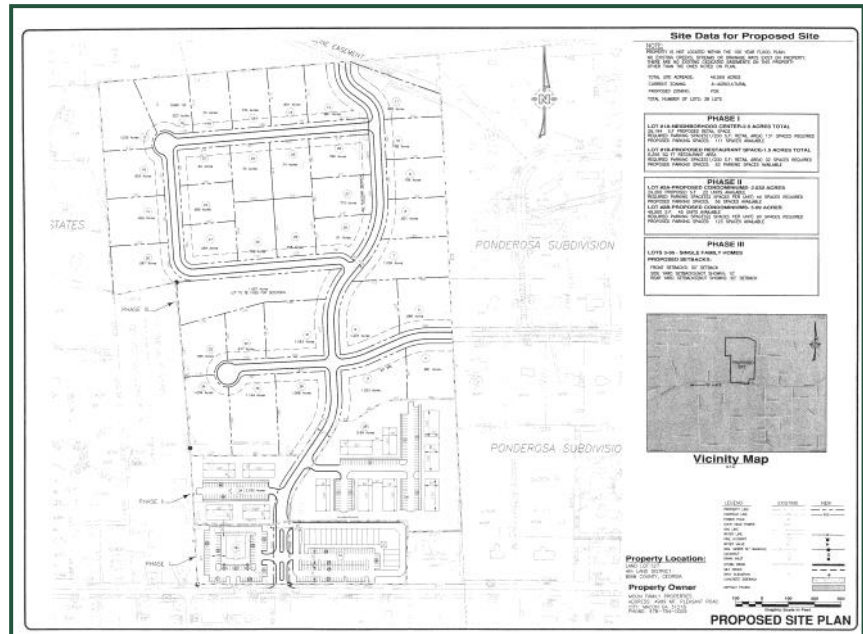
49 ± Acres
3939 Hartley Bridge Rd
Macon, GA 31216



STAKING & PAVING PLAN



PROPOSED SITE PLAN



**FOR MORE
INFORMATION
CONTACT**

Trip Wilhoit, CCIM, ALC
478-749-2159 (O)
478-960-4080 (C)
trip@fickling.com

Patty Burns, CCIM, ALC
478-746-9421 (O)
478-951-5100 (C)
patty@fickling.com

commercial.fickling.com