

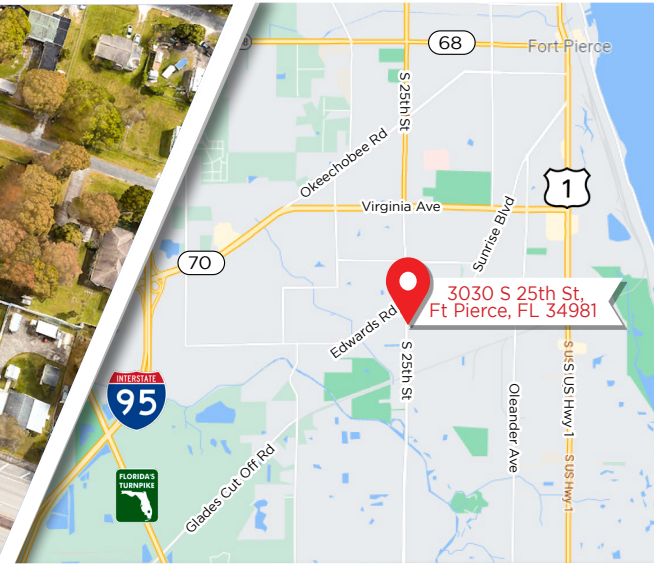
3030 S 25th St, FORT PIERCE, FL 34981



FULL SERVICE GAS STATION

DEMOGRAPHICS near 3030 S 25TH ST

	1 MILE	3 MILE	5 MILE
2021 Total Population	5,661	41,509	83,661
2026 Population	6,104	44,842	90,847



- Zoning CN
- No Fuel Contracts
- The property consists of a 2,600 ±SF (finished under Air) & 4,154 ±SF (Gross Sketched Area)
- Corner lot with plenty of parking
- The location benefits from excellent visibility, easy ingress and egress and a captive residential clientele.

30,927 SQFT
\$2,400,000



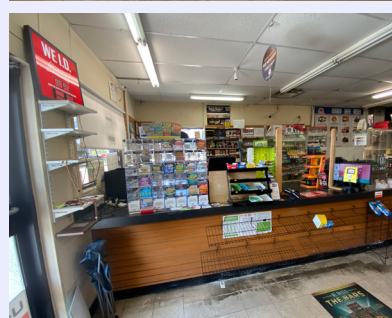
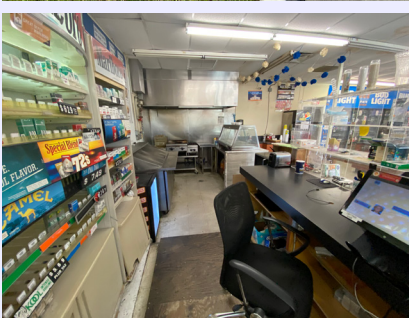
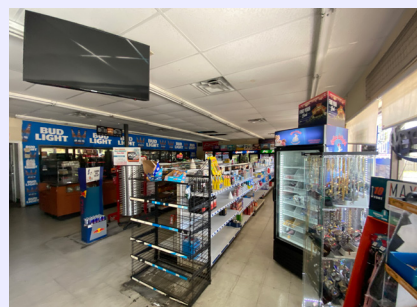
JOE PELAYO / CCIM, SIOR
trec@joepelayo.com
954.224.8773

CALL US!
TREC
Total Real Estate Consultants Inc.
www.trecfl.com
954.341.3294



JAMIL EL-SROUJI / BA
southfl.commercial@gmail.com
561.542.4468

3030 S 25th St, FORT PIERCE, FL 34981



JOE PELAYO / CCIM, SIOR
trec@joepelayo.com
954.224.8773

CALL US!
TREC
Total Real Estate Consultants Inc.
www.trecfl.com
954.341.3294

JAMIL EL-SROUJI / BA
southfl.commercial@gmail.com
561.542.4468

