

ANNUTTELIGA HAMMOCK TRACT 5

WEEKI WACHEE, FL | HERNANDO COUNTY

40 ± ACRES



Gorgeous 40 acre tract. Would make for a beautiful, quiet, single family homesite on acreage. Surrounded by other homesites in an area with good potential for growth. Consist of pines, live oaks, and various other trees. Subject to a conservation easement.



SPECIFICATIONS & FEATURES

Acreage: 40 ± Acres

Sale Price: Call for pricing

County: Hernando

Site Address: Earline Road, Weeki Wachee, FL 34614

Water & Utilities: Well/septic needed

Soil Types: Candler fine sand, Lake fine sand

Land Cover: Primarily Longleaf pine & Xeric oak, open land

Uplands/Wetlands: 100% uplands

Zoning/FLU: Rural

Fencing: None

Current Use: State use (SWFWMD)

Potential Uses: Good hunting and great for trail riding, hiking, walking & other outdoor activities

Game Populations: Deer & turkey



LOCATION & DRIVING DIRECTIONS

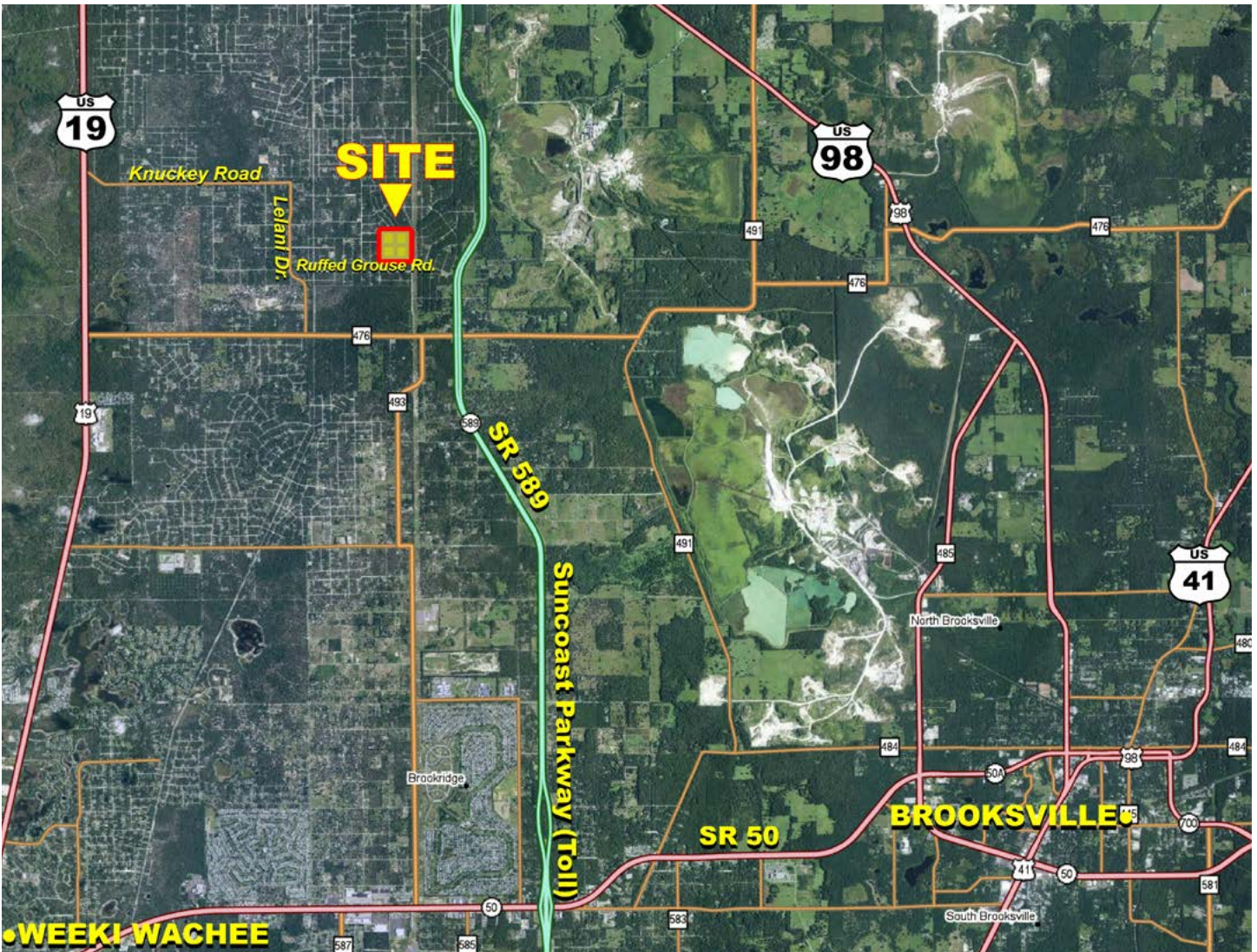
Parcel IDs:

- R4211828000000200030
- R4211828000000200000
- R4211828000000200020
- R4211828000000200010

GPS Location: 28.628257, -82.502196

Driving Directions:

- From US 19, take Knuckey Road 2 ± miles.
- Turn right on Lelani Drive and go ¾ ± mile.
- Turn left on Ruffed Grouse Road for 1 ± mile.
- Turn left on Bareva Road where the 4 parcels lie straight ahead.





1723 Bartow Rd | Lakeland, Florida 33801

40 ± Acres • Hunting • Recreation • Trails

Visit SVNsaunders.com & Search For: Annutteliga

Zeb Griffin, 352.630.7547 | zeb.griffin@svn.com
Britt Peace 863.274.3931 | britt.peace@svn.com



HEADQUARTERS
1723 Bartow Rd
Lakeland, Florida 33801
863.648.1528

NORTH FLORIDA
356 NW Lake City Ave
Lake City, Florida 32055
386.438.5896

GEORGIA
125 N Broad Street, Suite 210
Thomasville, Georgia 31792
229.299.8600

©2021 SVN | Saunders Ralston Dantzler Real Estate.
All SVN® Offices Independently Owned and Operated

SVN | Saunders Ralston Dantzler Real Estate is a full-service land and commercial real estate brokerage with over \$3 billion in transactions representing buyers, sellers, investors, institutions, and landowners since 1996. We are recognized nationally as an authority on all types of land, including agriculture, ranch, recreation, residential development, and international properties. Our commercial real estate services include marketing, property management, leasing and tenant representation, valuation, business brokerage, and advisory and counseling services for office, retail, industrial, and multi-family properties. Our firm also features an auction company, forestry division, international partnerships, hunting lease management, and extensive expertise in conservation easements. Located at the center of Florida's I-4 corridor, we provide proven leadership and collaborative expertise backed by the strength of the SVN® global platform. To learn more, visit SVNsaunders.com.



080921-A