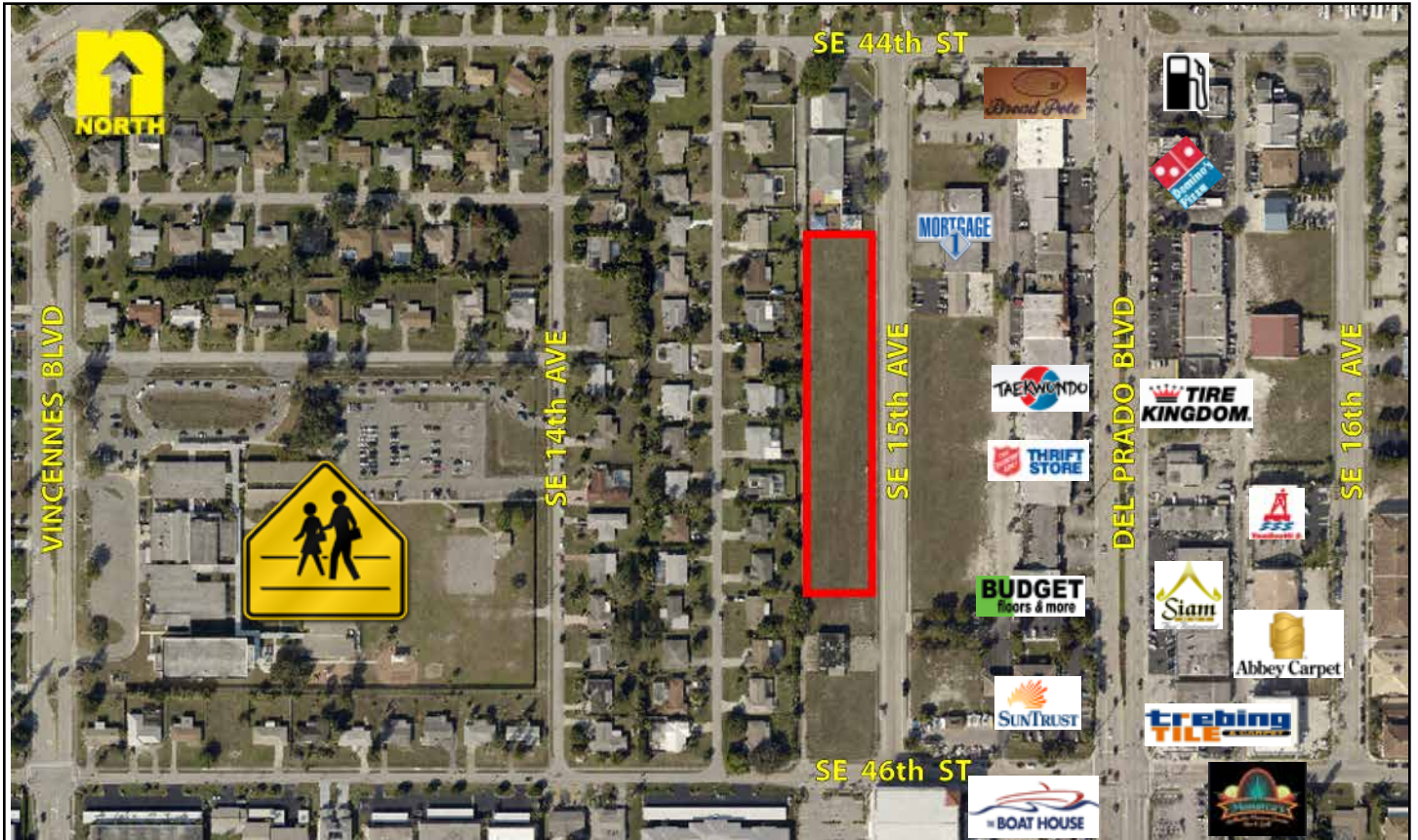


2.32± Commercial Acres Cape Coral FOR SALE



LOCATION: 4418, 4428, 4508 & 4524 SE 15th Ave., Cape Coral, FL 33904

STRAP #: 07-45-24-C3-00335.0570; 07-45-24-C3-00335.0550;
07-45-24-C3-00335.0430; 07-45-24-C3-00335.0400

SIZE: 2.32± Acres / 101,080 Sq. Ft.

UTILITIES: City of Cape Coral

ZONING: SC - South Cape Downtown District

PRICE: \$1,100,000 / \$10.88 Per Sq. Ft.

COMMENTS: Located in south Cape Coral, one block west of Del Prado Blvd., between SE 44th Street and SE 46th Street. Over 750 feet of frontage along SE 15th Ave. Allowable uses in the SC District include Assisted Living Facility, multi-family, family daycare, drugstores, banks, business offices, Fraternal clubs, food stores, restaurants, health care facilities, retail shops, veterinary clinics, churches, commercial schools and much, much more.

CONTACT: TOM WOODYARD
PHONE: (239) 425-6011
E-MAIL: twoodyard@wa-cr.com

The statements and figures presented herein, while not guaranteed, are secured from sources we believe authoritative. Subject to prior sale, lease, withdrawal and price change without notice.

4418, 4428, 4508 & 4524 SE 15th Ave., Cape Coral, FL 33904



The statements and figures presented herein, while not guaranteed, are secured from sources we believe authoritative. Subject to prior sale, lease, withdrawal and price change without notice.