



Free-standing College Park Office/Medical Building

- 3,525± SF office/medical building
- Built in 1984
- 0.32± AC lot
- Full plumbing and water to all offices and suites
- Zoned C-1
- Located in College Park
- Easy access to I-4, US 441, and SR 423
- 2 miles from AdventHealth Orlando



Great location



Ample parking



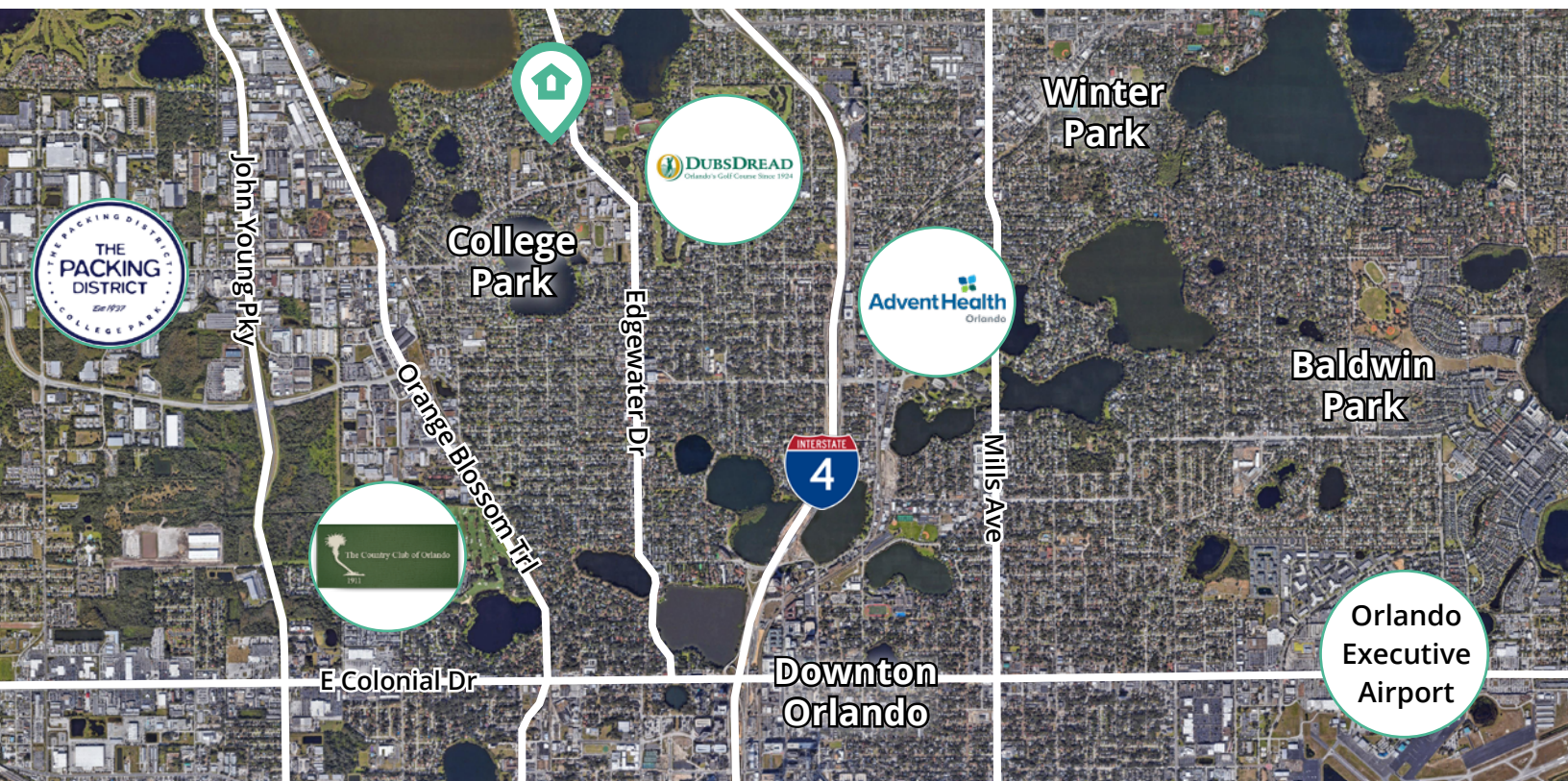
Ideal medical office

Asking Price: \$970,000

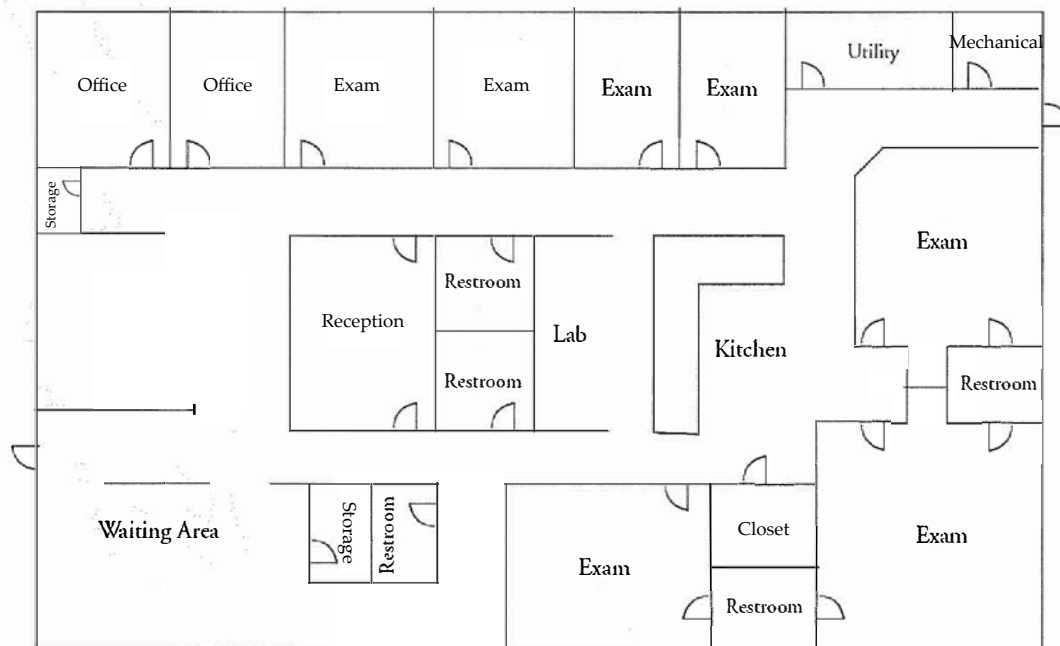
**For further
information**

Lawson Dann
Senior Vice President
+1 407 342 4689

avisonyoung.com



Floor plan



**For further
information**

Lawson Dann
Senior Vice President
+1 407 342 4689

avisonyoung.com