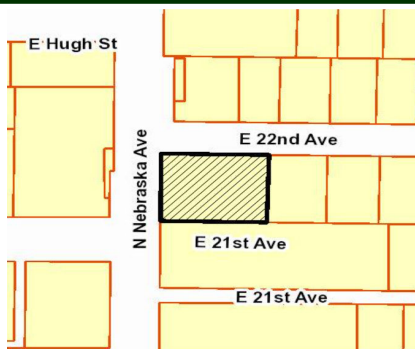
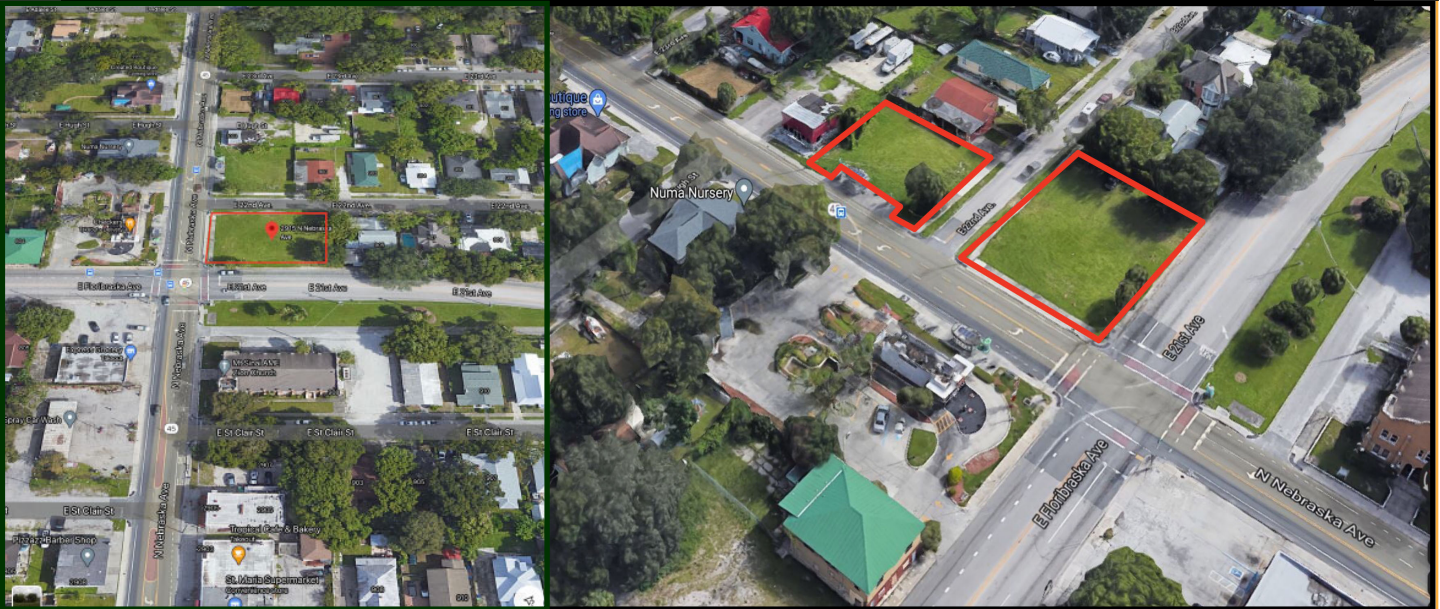


Vacant Land for Sale | Commercial



2915 N Nebraska Ave. Tampa, FL 33605

- ◆ **ON TRAFFIC INTERSECTION**
- ◆ **90 Feet on Nebraska Avenue**
- ◆ **Zoned CG**, Folio# 186596-0000
- ◆ CORNER LOT: Nebraska Ave. and 22nd Ave.
- ◆ Lot size: 11,472 square feet.
- ◆ Parcel across the street is also available for sale
- ◆ Ideal for Retail/Restaurant/Office

FOR SALE at \$516,000

LISTING AGENT: Tina Marie Eloian • P: 813-997-4321 • F: 813-930-0946 • E: Tina@FloridaCommercialGroup.com



*Locally Owned,
Globally Recognized*



401 E. Palm Avenue ❖ Tampa, FL 33602 ❖ www.FloridaCommercialGroup.com

Sales • Investments • Leasing • Property Management



Each Office Individually Owned and Operated

This information is from sources deemed to be reliable. We are not responsible for misstatements of facts, errors or omissions, prior sale, change of price and/or terms or withdrawal from the market without notice. Buyer shall verify all information with their own representatives as well as state and local agencies.