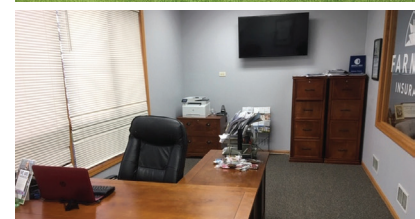
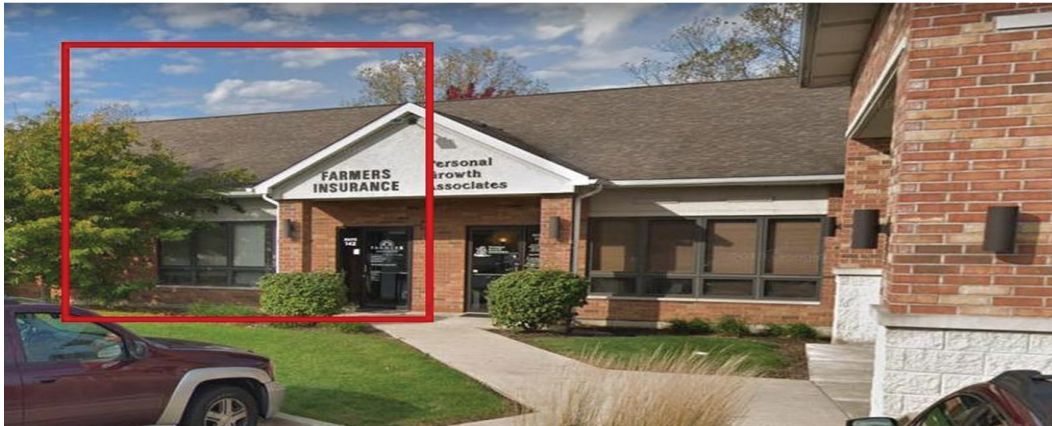


820 E. TERRA COTTA, UNIT 142 CRYSTAL LAKE, IL 60014

FOR SALE

MLS # 10946011

June 23, 2021



OFFICE CONDO – 625 SF

\$69,900 (\$111.84 psf)

DESCRIPTION

625 SF Professional Office Condo

Rare sized (25x25') 625 SF single-story masonry professional office condo with private entrance and nice natural light. 12x14' private office and 2nd 9x12' office with reception area, kitchenette/storage and bath on a crawl space. See photos and layout.

Ideal for insurance (current use), attorney, CPA, etc. Quality build-out.

Current lease has 60 day cancellation clause.

Association dues only \$125/mo.

SPECIFICATIONS

Description	Office Condo
Building Size	625 SF
Year Built	2000
HVAC System	GFA / Central Air
Electrical	100 AMP
Sprinkled	No
Washrooms	1 ADA
Ceiling Height	9'
Parking	Common
Sewer/Water	City
Zoning	O (Office)
RE Taxes	\$2,285.98 (2020)
Association Fee	\$125/mo
Possession Date	Negotiable
PIN Number	14-34-178-042

No warranty or representation is made as to the accuracy of the foregoing information. Terms of sale or lease and availability are subject to change or withdrawal without notice. This document is for information purposes only. No offer of sub-agency is being made.

PREMIER
COMMERCIAL REALTY

- Industrial
- Commercial
- Office
- Land
- Business

[CLICK HERE](#)
to view our website

BRUCE KAPLAN

Senior Broker
Office: 847-854-2300 Ext 20
Cell: 847-507-1759

BruceK@PremierCommercialRealty.com

9225 S. IL Route 31
Lake in the Hills, IL 60156
www.PremierCommercialRealty.com
Office: 847-854-2300 | Fax: 847-854-2380

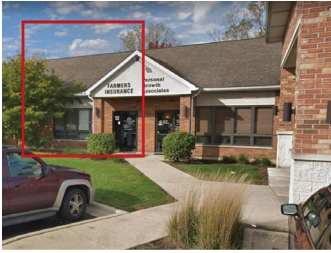
KEVIN KAPLAN

Associate Broker
Office: 847-854-2300 Ext 13
Cell: 309-261-0920

KevinK@PremierCommercialRealty.com

820 E. TERRA COTTA, UNIT 142 CRYSTAL LAKE, IL 60014

FOR SALE



FLOOR PLAN



PREMIER
COMMERCIAL REALTY

- Industrial
- Commercial
- Office
- Land
- Business

[CLICK HERE](#)
to view our website

9225 S. IL Route 31
Lake in the Hills, IL 60156
www.PremierCommercialRealty.com
Office: 847-854-2300 | Fax: 847-854-2380