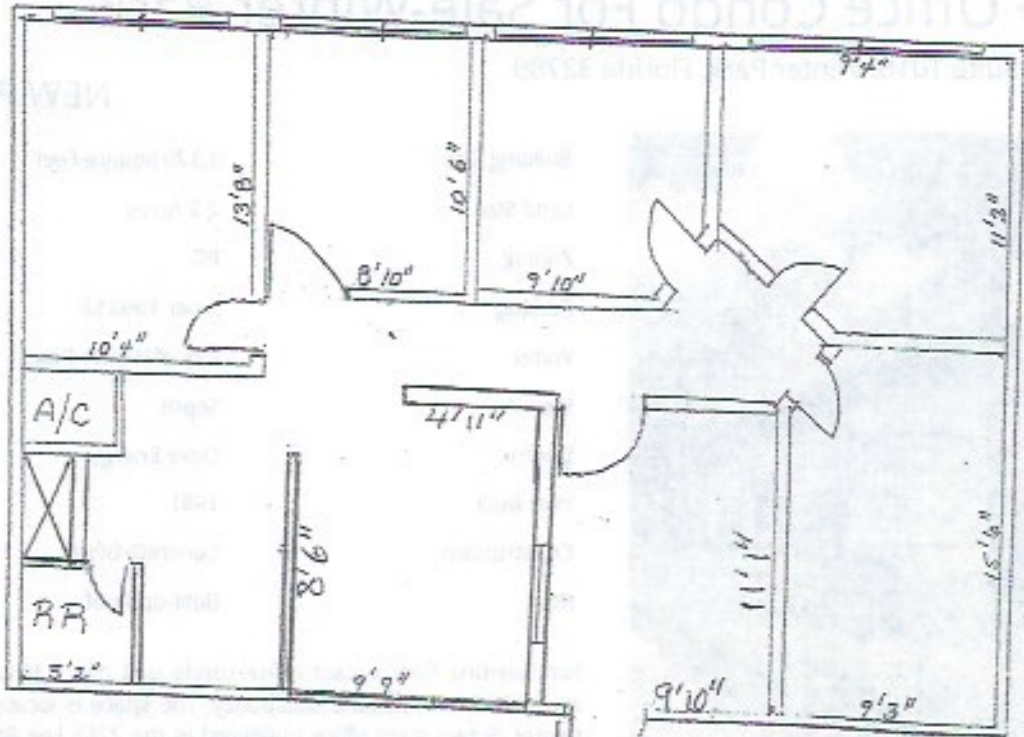


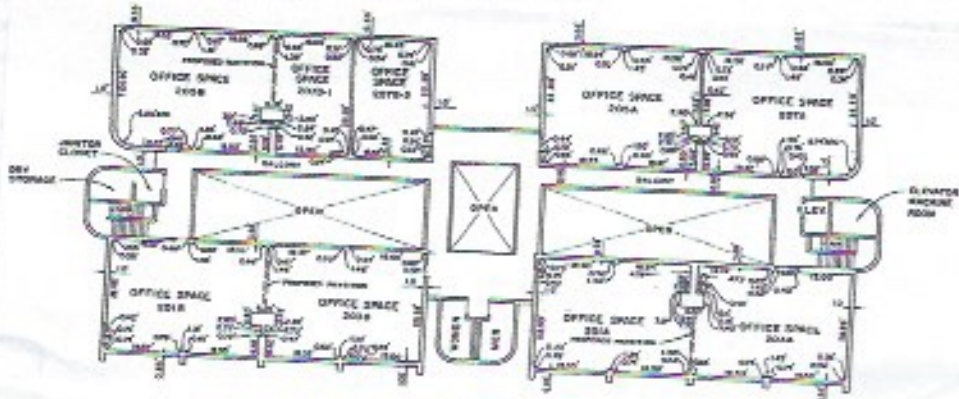
Lee Rd.

2265 Lee Road, Suite 103 3,120 sqft

Suite 103



Atrium Area



SECOND FLOOR

PROPOSED FLOOR ELEVATION 11.00'
REFLECTING 2004-05-01 SURVEYING TO THE
FOR 2004-05-01, 2004-05-01, 2004-05-01, 2004-05-01, 2004-05-01



FIRST FLOOR