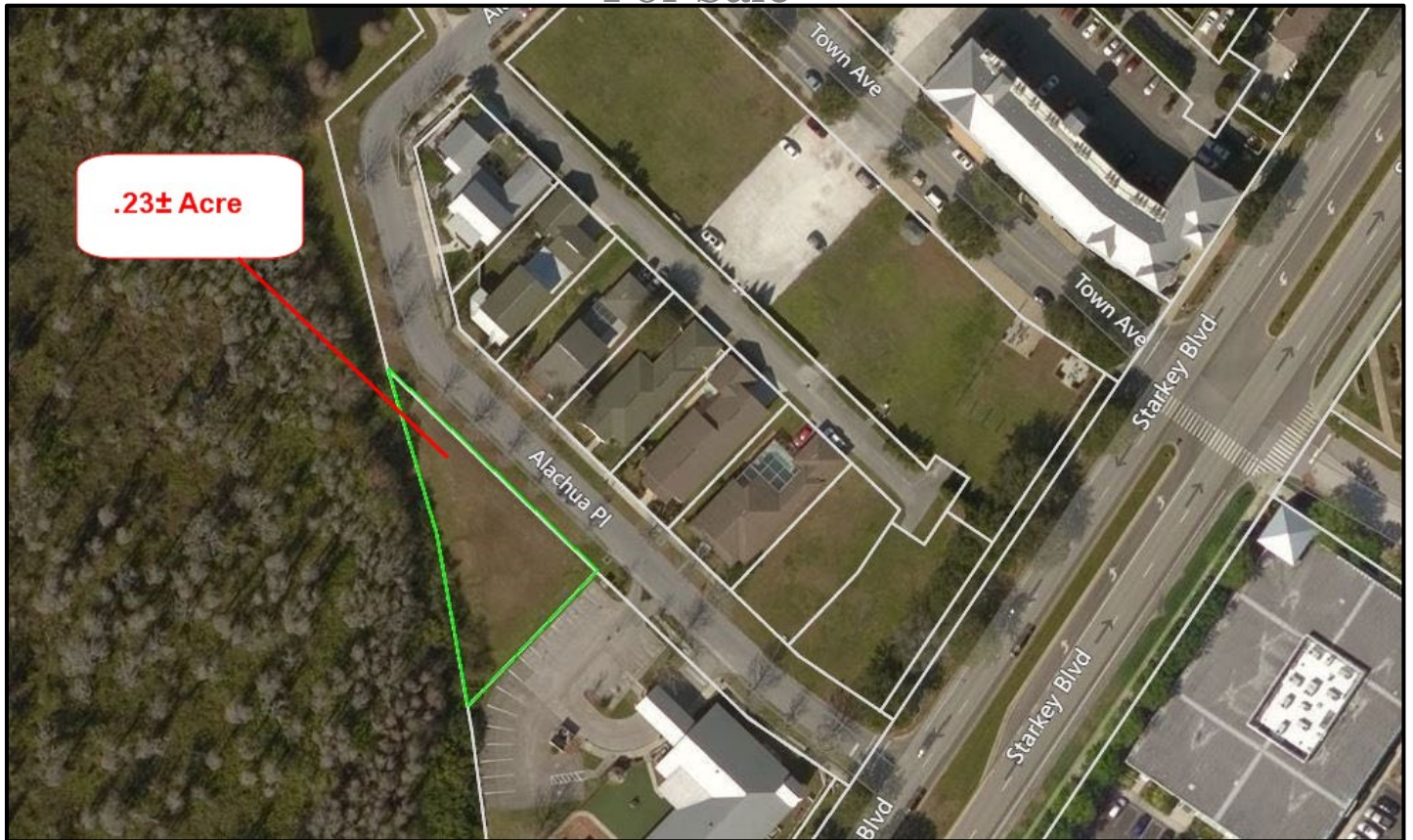




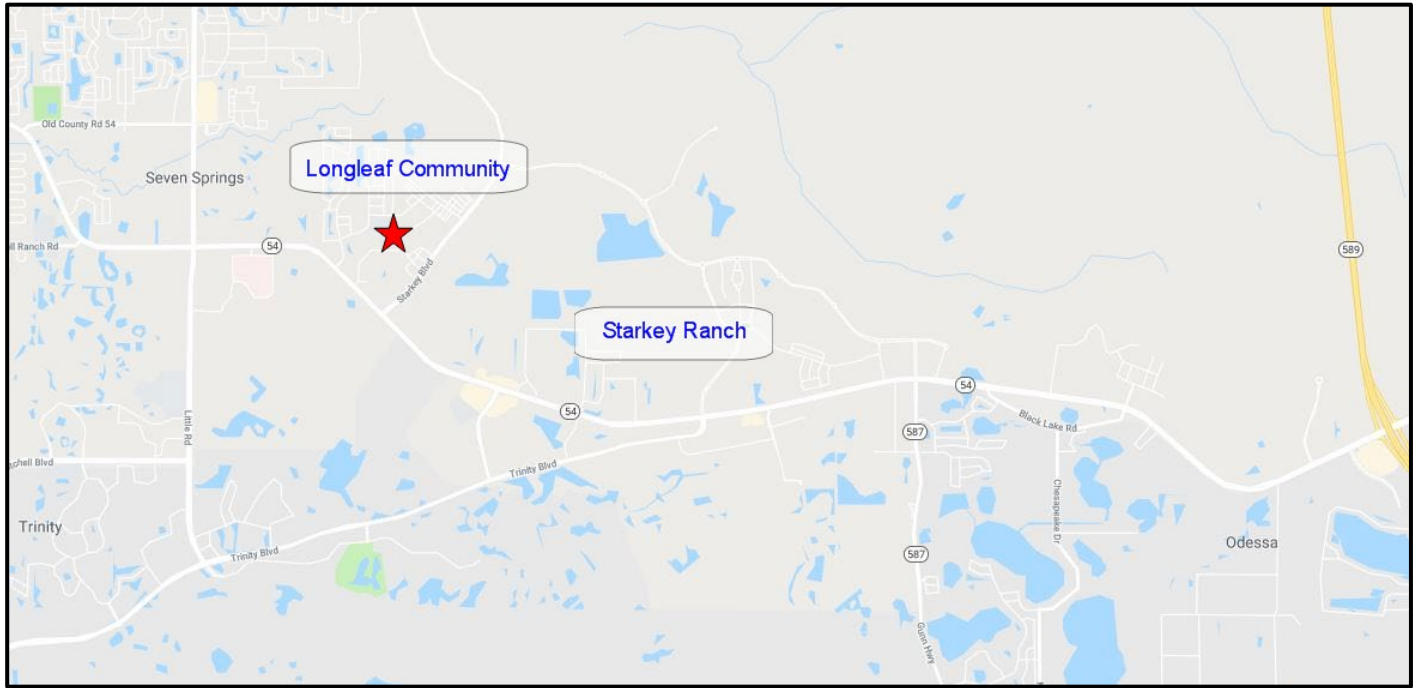
Rare Mixed Use Land Longleaf in Starkey Ranch

For Sale



Property Information

- **.23± Acre Mixed Use Lot**
- **Zoned MPUD-Allows Multi-Family, Office, Duplex, Single Family Attached, Mixed Use**
- **Future Land Use is Res 6**
- **Approved for 3,000 SF Office (If Office Only)**
- **Located Between:**
 - **Starkey Ranch with 5,000+ Single Family Homes in Development**
 - **Longleaf Community with 500+ Single Family Homes in Development**
- **CDD and HOA Fees**
- **Sales Price: \$75,000**



| DEMOGRAPHICS BY MILE | | | |
|----------------------|----------|----------|----------|
| | 1 MILE | 3 MILES | 5 MILES |
| Total Population | 4,025 | 41,368 | 88,131 |
| Avg. HH Income | \$60,139 | \$61,964 | \$54,840 |
| Median Age | 54.6 | 53.4 | 50.7 |
| Total Households | 1,626 | 17,289 | 36,674 |

| DEMOGRAPHICS BY DRIVE TIME | | | |
|----------------------------|----------|----------|----------|
| | 5 MINS | 10 MINS | 15 MINS |
| Total Population | 5,162 | 52,893 | 139,867 |
| Avg. HH Income | \$62,258 | \$59,210 | \$51,470 |
| Median Age | 57.3 | 50.1 | 47.2 |
| Total Households | 2,133 | 21,917 | 57,608 |

Tampa Bay Land Team...



D. Dewey Mitchell, CCIM
Broker Owner
727-569-2332
industrial@bhhsflpg.com



Renee' D. Dyer, CCIM, ALC
Executive Associate
727-460-4901
rdyer@bhhsflpg.com



Jill Carbonelli, CCIM
Sr. Broker Associate
727-639-5713
jcarbonelli@bhhsflpg.com



*CRE Boss Ladies
Dyer/Carbonelli Team
Ranked Top 3 Teams Nationwide
Berkshire Hathaway Commercial*