



Office building | For sale

- 33,000± SF office building available
- 3.95± AC parcel
- Average annual traffic count of 61,500 on SR 436
- Redevelopment opportunity within planned mixed-use development zoning district (PMX-L)
- Located in City of Casselberry
- Priced well below replacement cost

Asking price

- \$2,700,000 (\$81/PSF)



10/1,000 parking ratio



355± SF of frontage on SR 436



Pylon signage

For further information

Gunner Leslie

Associate
+1 407 440 6642

Nathan Eissler, CCIM, SIOR

Principal
+1 407 440 6658

avisonyoung.com



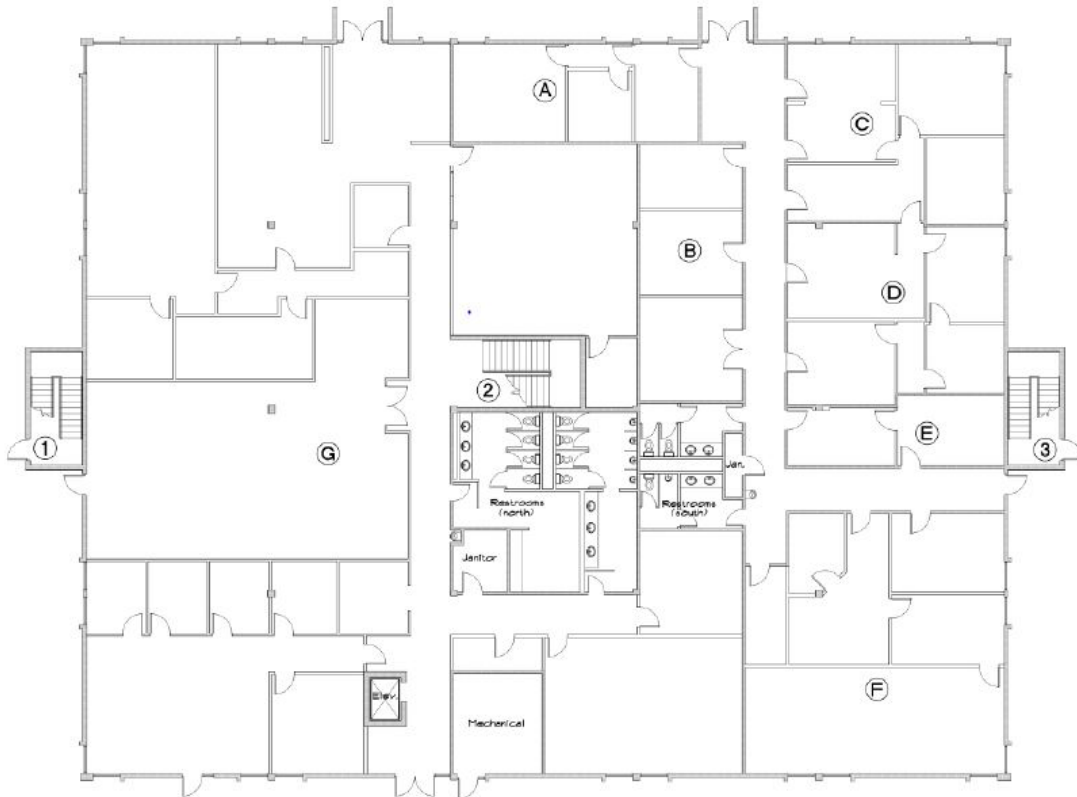
**For further
information**

Gunner Leslie
Associate
+1 407 440 6642

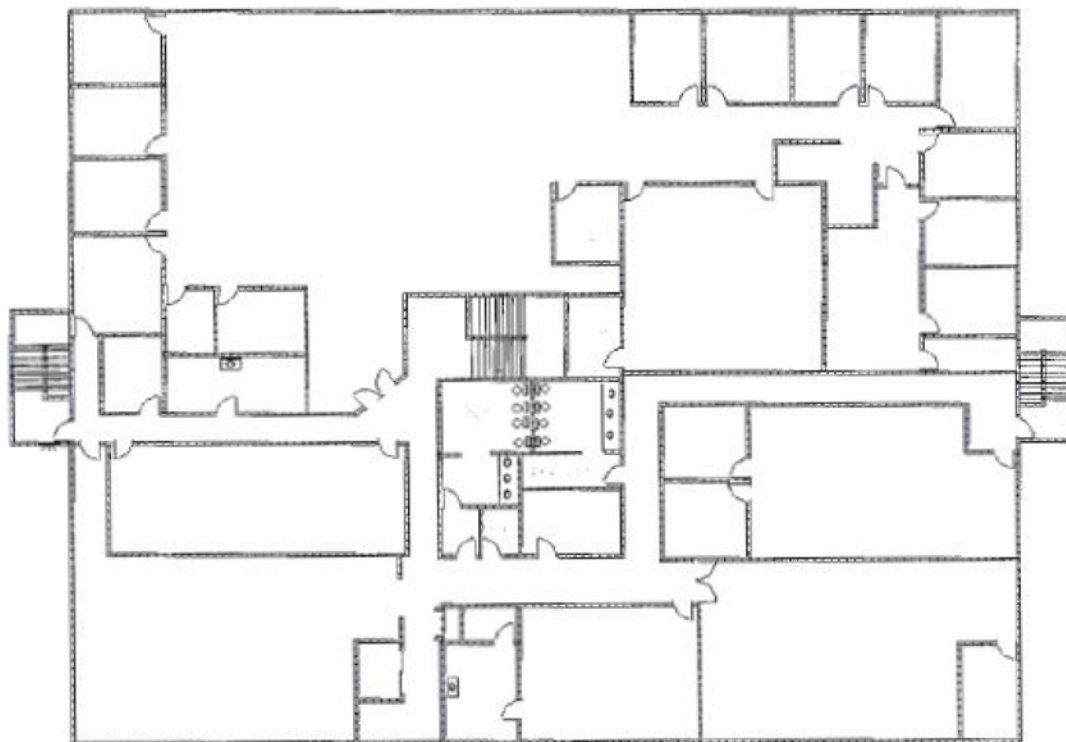
Nathan Eissler, CCIM, SIOR
Principal
+1 407 440 6658

**AVISON
YOUNG**

First Floor



Second Floor



For further information

Gunner Leslie
Associate
+1 407 440 6642

Nathan Eissler, CCIM, SIOR
Principal
+1 407 440 6658





**For further
information**

Gunner Leslie
Associate
+1 407 440 6642

Nathan Eissler, CCIM, SIOR
Principal
+1 407 440 6658

**AVISON
YOUNG**

