

**Fact  
Business &  
Realty, Inc.**

[www.fbriteam.com](http://www.fbriteam.com)

***COMMERCIAL  
PROPERTY  
FOR SALE***



**10 .88 ACRES**

***Near Sanford Airport***

***Zoned MI-2***

**1320 Pine Way**

**Sanford, FL 32773**

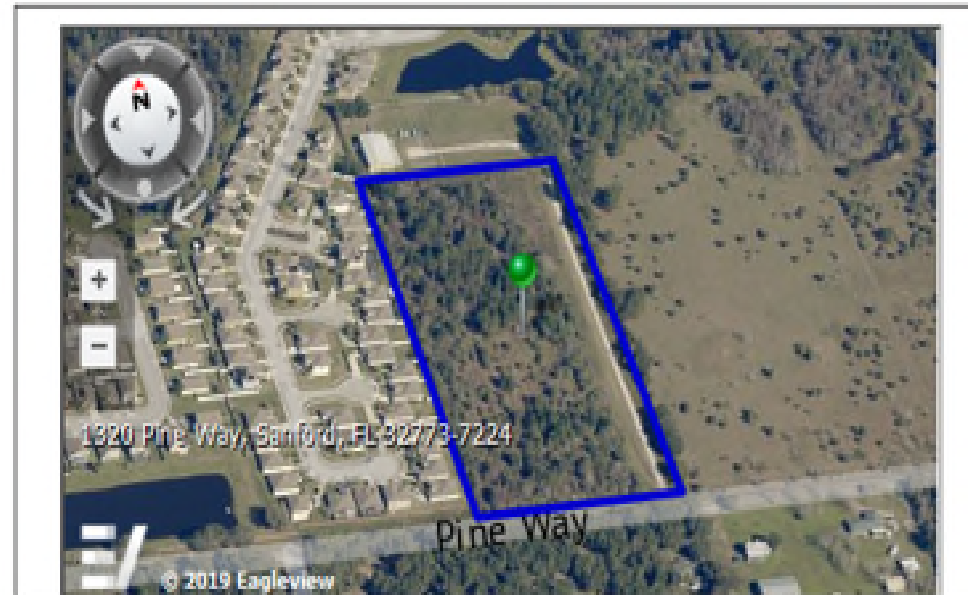
**Contact: Frank J. Thomas**

**407.497.4192**

# 1320 Pine Way Sanford, FL 32773

## Parcel Information

Parcel	18-20-31-300-004C-0000
<a href="#">Owner(s)</a>	TOMKAT ENTERPRISES LLC
Property Address	1320 PINE WAY SANFORD FL 32773
Mailing	PO BOX 952946 LAKE MARY, FL 32795
Subdivision Name	
Tax District	S1-SANFORD
DOR Use Code	40-VAC INDUSTRIAL GENERAL
Exemptions	

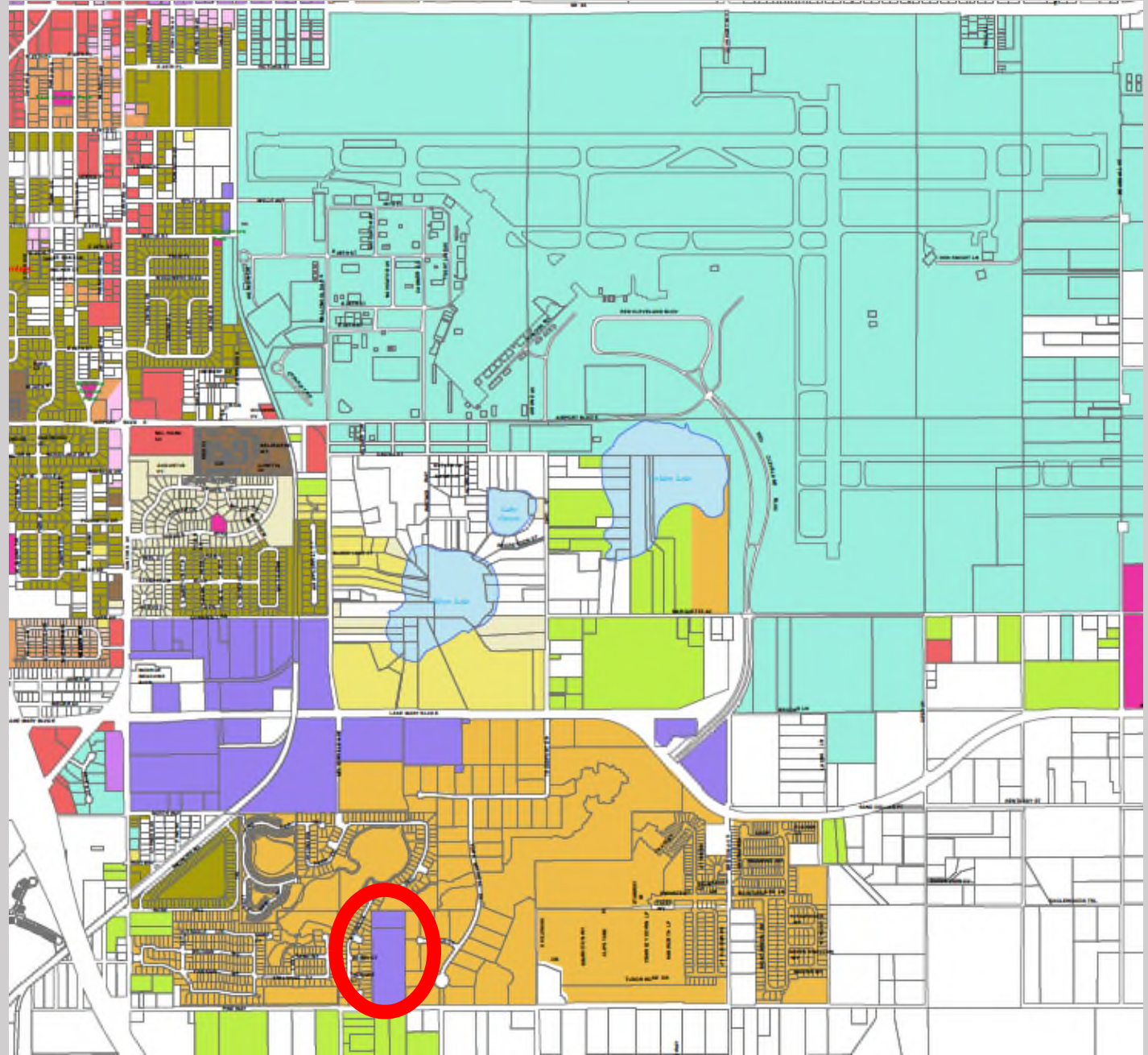


# City of Sanford

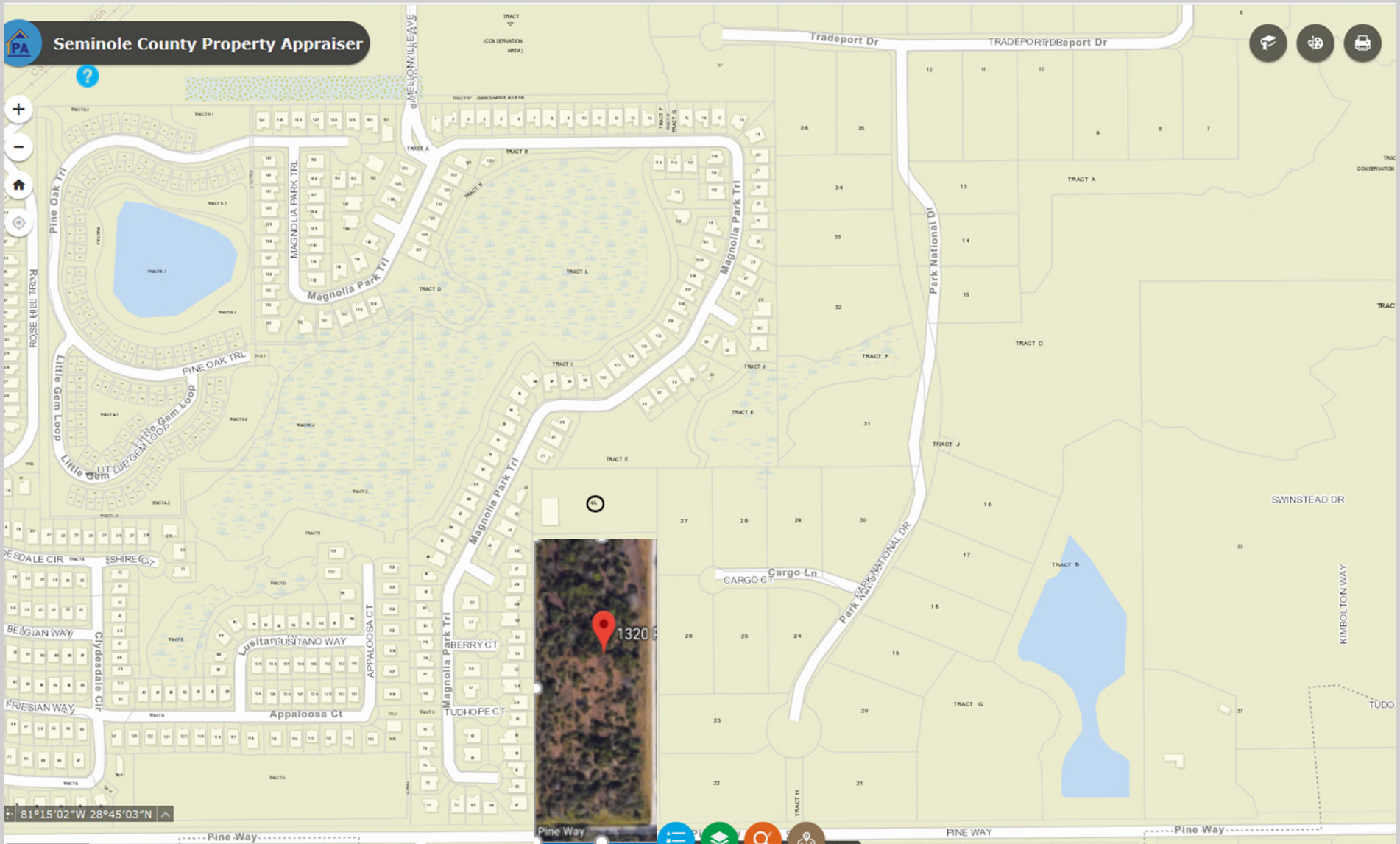
## Zoning Districts

### Legend

	<b>AG</b>	Agriculture
	<b>GC2</b>	General Commercial
	<b>MI2</b>	Medium Industrial
	<b>MR1</b>	Multi Family Residential 8 D.U./acre
	<b>MR2</b>	Multi Family Residential 15 D.U./acre
	<b>MR3</b>	Multi Family Residential 20 D.U./acre
	<b>PD</b>	Planned Development
	<b>PRO</b>	Parks, Recreation, Open Space
	<b>RC1</b>	Restricted Commercial
	<b>RI1</b>	Restricted Industrial
	<b>RMOI</b>	Multi Family Residential /Office/Institutional
	<b>SC3</b>	Special Commercial
	<b>SR1</b>	Single Family Residential 6,000 sq.ft. Lots
	<b>SR1A</b>	Single Family Residential 7,500 sq.ft. Lots
	<b>SR1AA</b>	Single Family Residential 10,000 sq.ft. Lots
	<b>SR2</b>	Mobile Home



# Island of Industrial Development



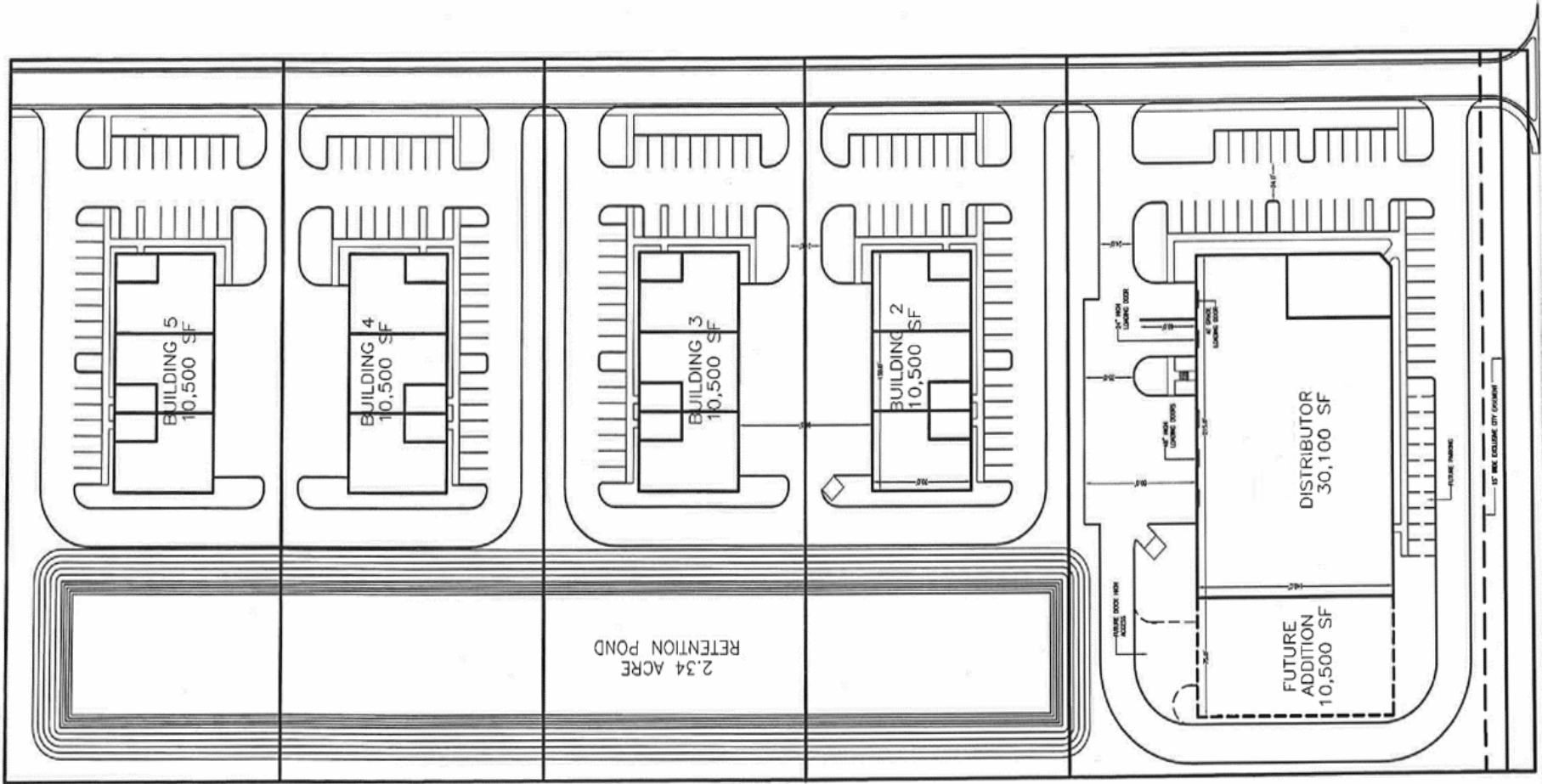
# Proximity to Sanford Airport



# North View of Pine Way



# Pine Way Candidate Rendering







# Summary: 1320 Pine Way Sanford, Fl

- ✓ Proximity to the Sanford Airport
- ✓ The Only Industrial Zoned Parcel on Pine Way
- ✓ Parcel Size - 10.88 Acres
- ✓ Zoning: MI-2 Medium Industrial
- ✓ Sale Price - \$1.2M