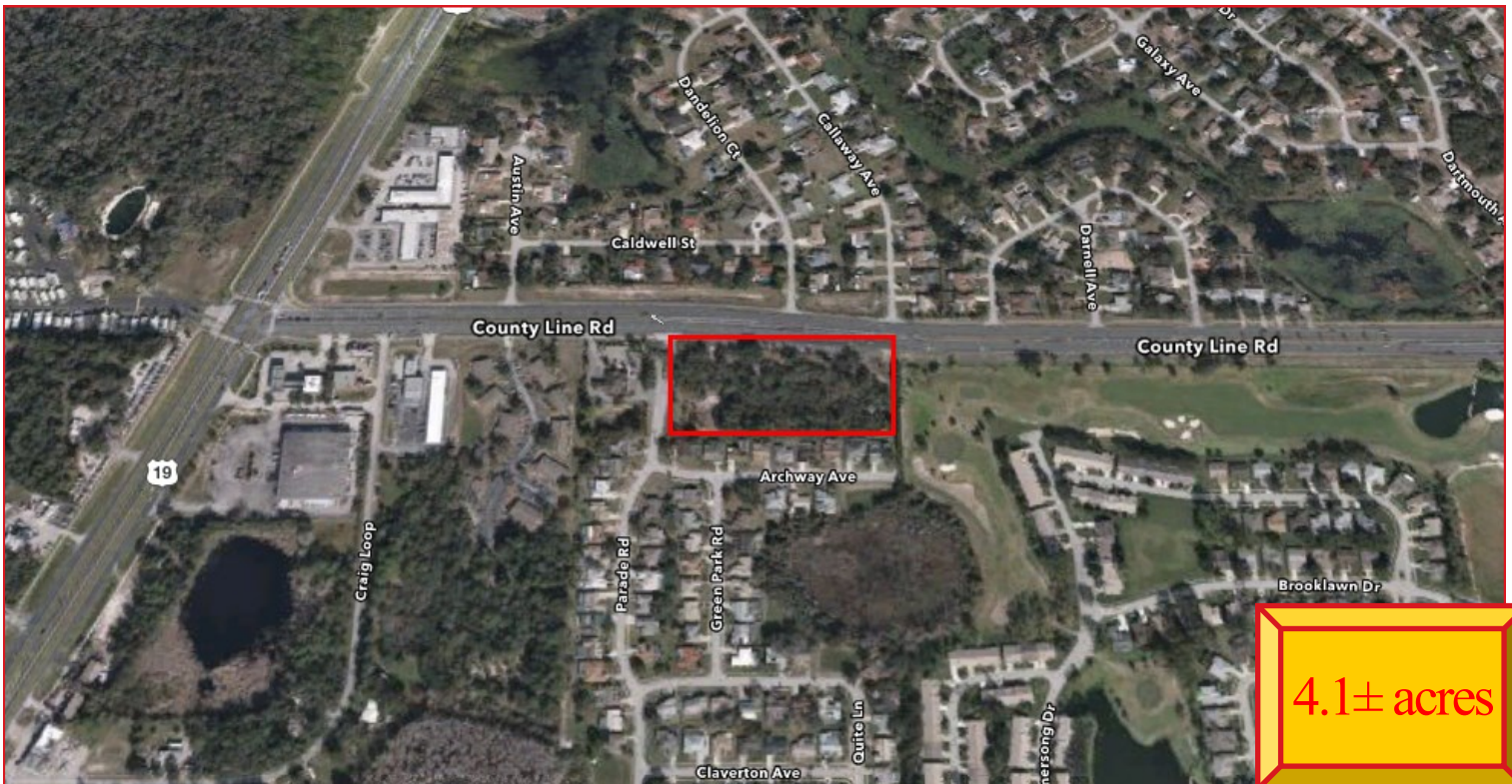


10924 COUNTY LINE ROAD, HUDSON, FL 34667



VACANT LAND ON COUNTY LINE ROAD

Offered at: **\$975,000**

Location: Just East of U.S. Highway 19 on County Line Road in Hudson

Property Highlights:

- Zoned Neighborhood Commercial District / C-1
- Size – 4.1± Acres / 645' x 307'
- 645' of Frontage on County Line Road
- Fema Code – X

FOR MORE INFORMATION

Office: 727-849-2424

Leander “Lee” Koutsos

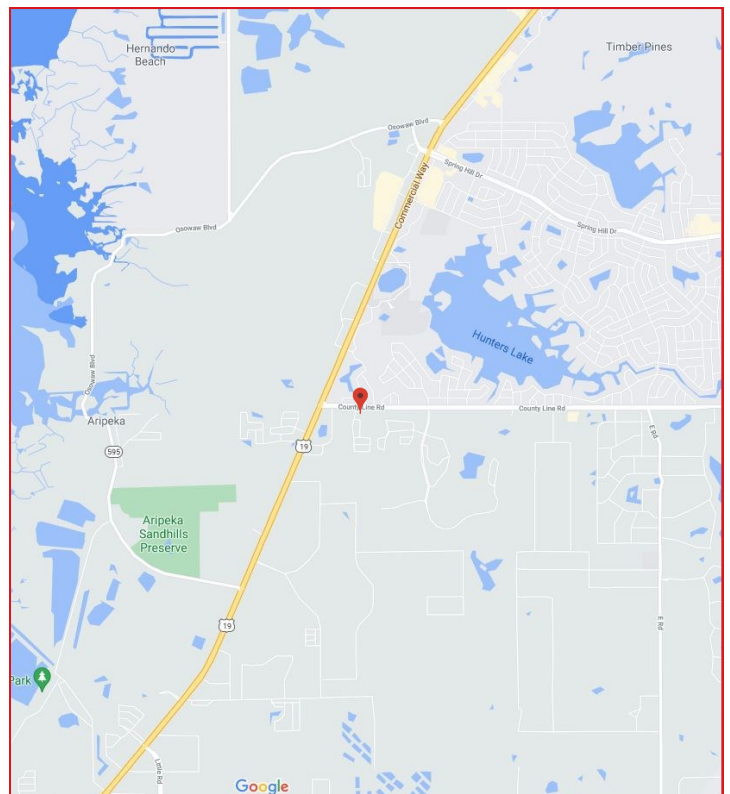
727-858-6892

Leander@figrey.com

Jeff Grey

727-481-4562

Jeff@figrey.com



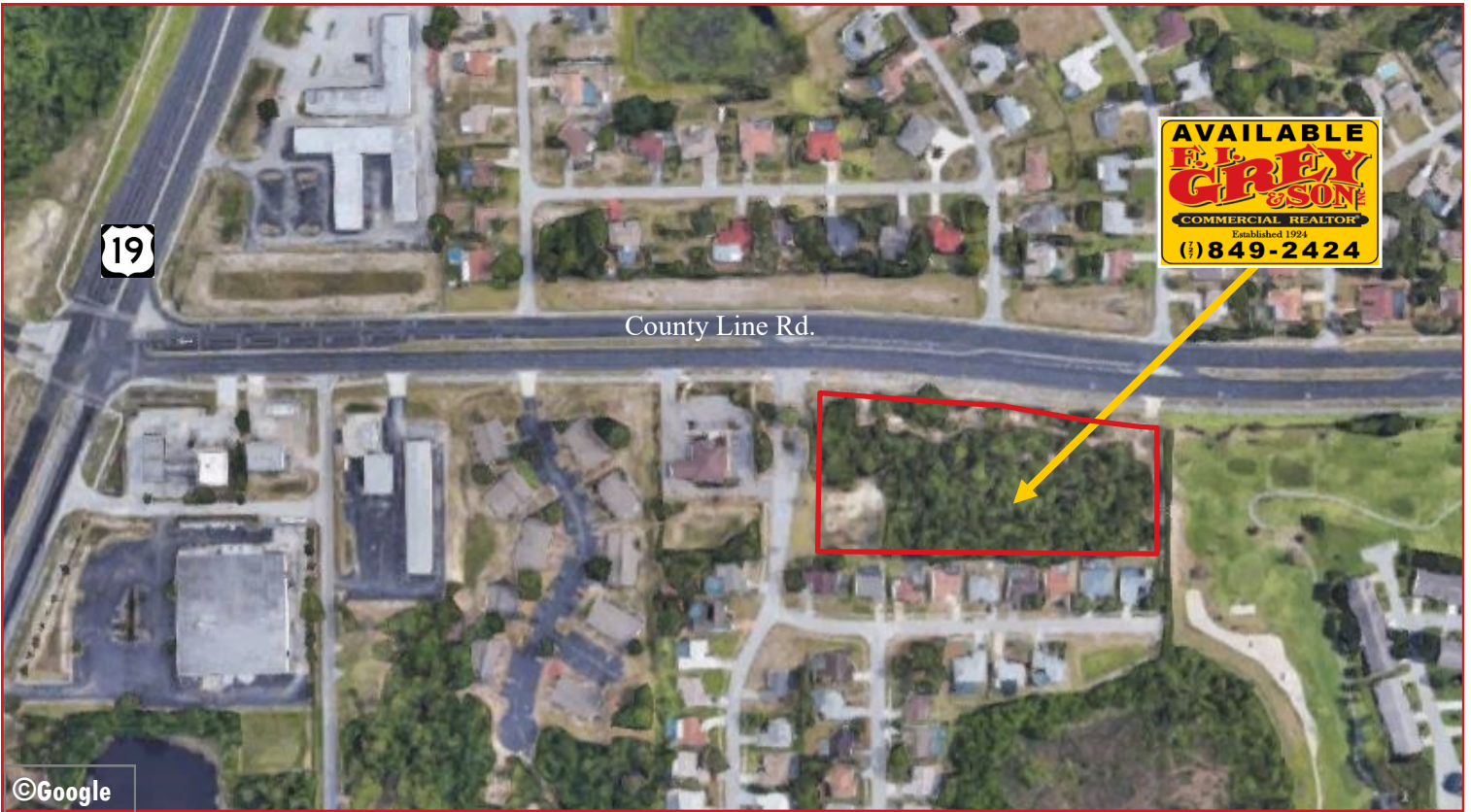
The information given herewith is obtained from sources we consider reliable. We are not responsible for misstatements of facts, errors, omissions, changes in terms or conditions, or withdrawal from the market without prior notice.



5636 Grand Blvd., Suite A
New Port Richey, FL 34652
727.849.2424
www.figrey.com

Established in 1924
Serving Florida for over 95 years!

10924 COUNTY LINE ROAD, HUDSON, FL 34667



Demographics

	<i>Radius</i>		
	<i>1-Mile</i>	<i>3-Miles</i>	<i>5-Miles</i>
Population:	3,921	21,159	57,586
Households:	1,937	9,275	25,158
Average HH Income:	\$71,371	\$59,363	\$60,259
Traffic Counts: (FDOT)	19,500 AADT on County Line Rd.		

PROPERTY STATISTICS

Site	
Size	4.1 acres
Zoning	C1
Taxes (2020)	\$2,441.55

FOR MORE INFORMATION

Office: 727-849-2424

Leander "Lee" Koutsos

727-858-6892

Leander@figrey.com

Jeff Grey

727-481-4562

Jeff@figrey.com



P. 727.849.2424 | F. 727.842.6596

5636 Grand Blvd., Suite A, New Port Richey, FL 34652
www.figrey.com | www.Facebook.com/figreycommercial



WE WORK TOGETHER



FLORIDA GULF COAST COMMERCIAL ASSOCIATION OF REALTORS



Total Commercial.com



MY FLORIDA REGIONAL MLS



CREXi



Florida Commercial Brokers Network

Since 1993



West Pasco BOARD OF REALTORS