

# Lake Mary Medical Office

2500 W Lake Mary Blvd. STE #109, Lake Mary, FL 32746

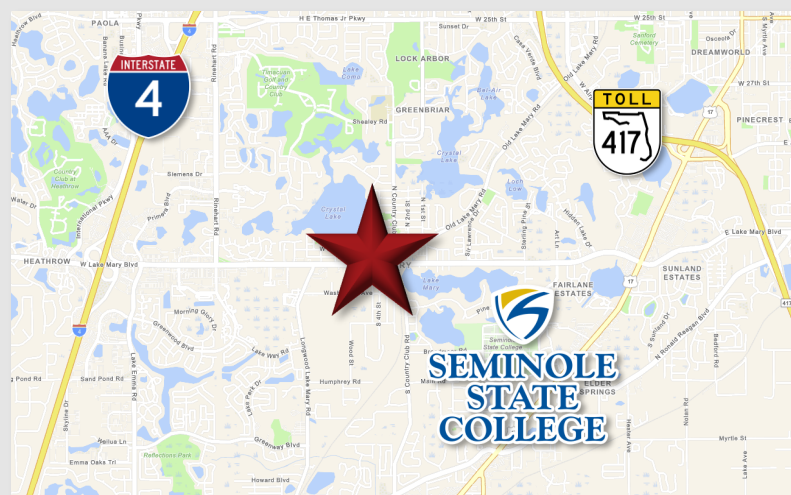
**Palkiper**  
Commercial Real Estate Services

**Reduced!**

Price: \$359,000

## LOCATION DETAILS

Located in beautiful Downtown Lake Mary on W Lake Mary Blvd with an average traffic count of 27,500 CPD. Within walking distance of Central Park, multiple shops and eateries, and only a 15-min walk to/from the SunRail Station. Nearby Seminole State College's main campus and Lake Mary Centre. Less than 3 miles from I-4, US 17-92, and the 417.



## PROPERTY DETAILS

- ±2,029 SF Medical Office
- Located on the first floor of a ±35,000 SF Office Condominium
- Ample Parking
- Includes exam rooms, lab, offices, waiting room, and reception area

### 2020 DEMOGRAPHICS

	1-MILE	3-MILE	5-MILE
Population	5,353	65,672	169,039
Average HH Income	\$117,689	\$89,518	\$92,389
Median HH Income	\$84,616	\$70,285	\$67,341

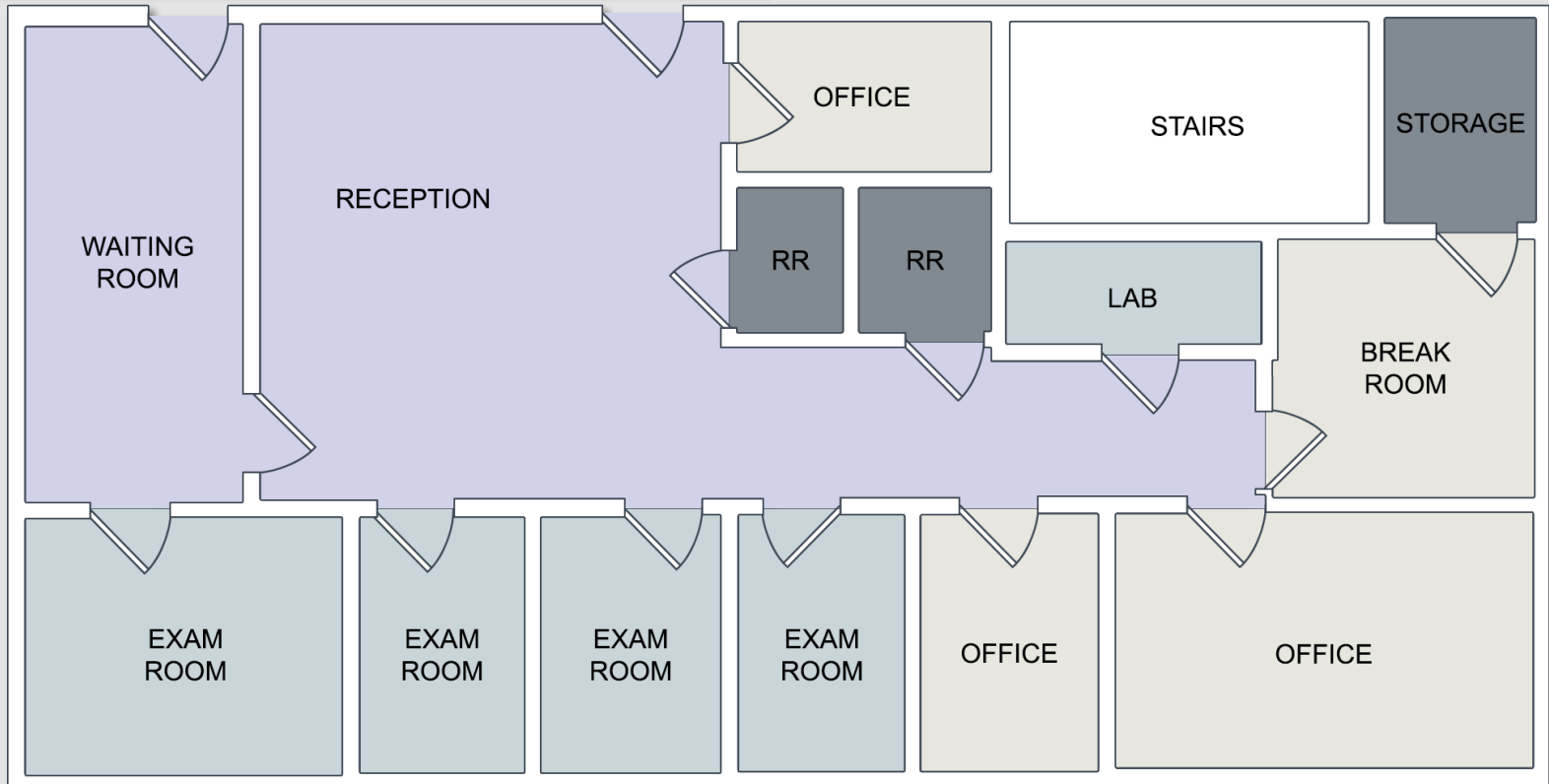
## CONTACT FOR MORE INFORMATION

**Marie Shorey, CCIM**  
407.383.8142  
[marie@palkiper.com](mailto:marie@palkiper.com)



# Lake Mary Medical Office

2500 W Lake Mary Blvd. STE #109, Lake Mary, FL 32746



## SUITE DETAILS

- ±2,029 SF Medical Office located next to the main entrance on the 1st floor
- Spacious waiting room
- Reception area with sliding glass window and separate exit for patient privacy
- 4 Exam rooms with sink and upper/lower cabinetry
- Lab with recessed pass-through cabinet to patient restroom
- 2 Private restrooms
- 3 Offices

CONTACT FOR MORE INFORMATION

**Marie Shorey, CCIM**

407.383.8142

[marie@palkiper.com](mailto:marie@palkiper.com)

# Lake Mary Medical Office

2500 W Lake Mary Blvd. STE #109, Lake Mary, FL 32746

 **Palkiper**  
Commercial Real Estate Services



2500 <i>Lake Mary City Centre</i>	
QUEST DIAGNOSTICS	LABCORP
CHRISTOPHER K. QUINSEY, M.D. OBSTETRICS AND GYNECOLOGY	CLINICAL ONCOLOGY RESEARCH NETWORK
COAST DENTAL & ORTHODONTICS	COMPASS BOOKKEEPING
DILLARD DIET DESIGNS	ELECTRIC DATA SYSTEMS, INC.
FLORIDA MEDICAL TRANSPORT	KING INSURANCE AGENCY
ALL ABOUT MANAGEMENT	PHYSICIAN DISPENSING SOLUTIONS
RAMSEY LAW, PLLC	RYAN C. W. HALL, MD, PA
PARK PLACE REALTY	CLEMENTS & ASSOCIATES
COUNSELING & WELLNESS CENTER	VILLAR NEUROPSYCHOLOGY
	INSURANCE INVESTMENTS SERVICES 407-37-QUOTE - SUITE 107

CONTACT FOR MORE INFORMATION

**Marie Shorey, CCIM**

407.383.8142

[marie@palkiper.com](mailto:marie@palkiper.com)