



JOHN STANLEY
&
ASSOCIATES

COMMERCIAL REAL ESTATE



**A.J. McLemore Multi-family Site
Atlanta Hwy - Montgomery, AL**

FOR SALE

- **Sale Price:** \$75,000.00/Acre
- **Land Size:** ± 10.76 Acres
- **Zoning:** R-65m
- **Current Use:** Vacant/Undeveloped
- **Best Use:** Multi-family
- **Visibility:** Excellent
- **Utilities:** Available to site
- **Listing Type:** Exclusive

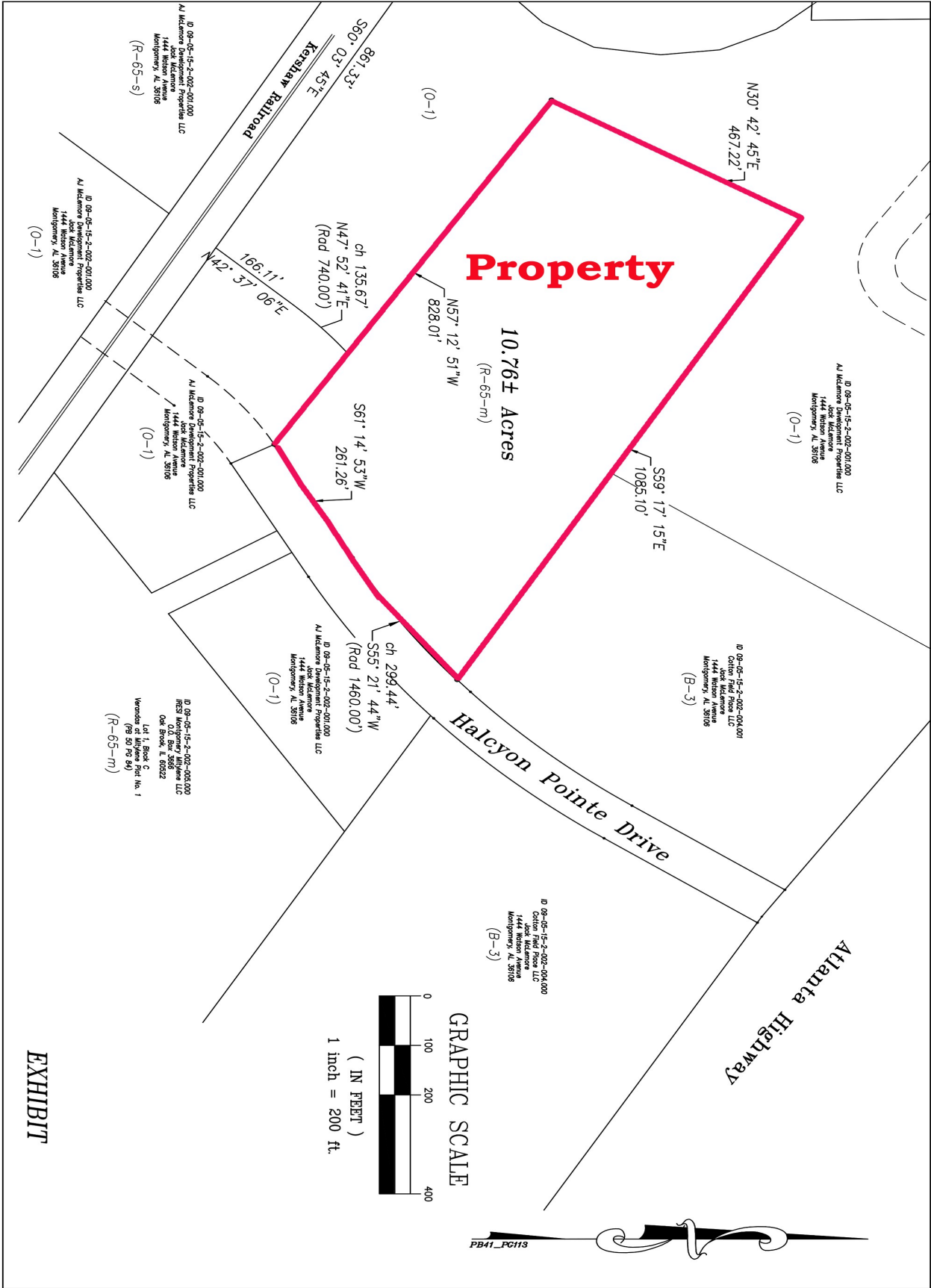
± 10.76 acre multi-family site located on Halcyon Pointe Drive off U.S. Hwy 80 (Atlanta Hwy) near Exit 11 @ I-85. Site is adjacent to the existing Barrington Place Apartments and across from the Verandas Apartments. Excellent site for luxury apartments. Contact John Stanley, CCIM, for more information at (334) 271-2475.



John C. Stanley, CCIM
John Stanley & Associates, Inc.
4747 Woodmere Boulevard
Montgomery, AL 36106
(334) 271-2475 voice
(334) 271-2421 fax
jstanley@johnstanleyassociates.com
www.johnstanleyassociates.com



All information is from sources deemed reliable, but no warranty is made as to the accuracy thereof and same is submitted subject to errors, omissions, change of price, or other conditions, such as prior sales or withdrawal without notice by John Stanley & Associates, Inc. or the Owner.



Property

10.76± Acres
(R-65-m)

Atlanta Highway

Halcyon Pointe Drive



EXHIBIT

D 09-05-15-2-002-001,000
AJ McMurry Development Properties LLC
1444 Nelson Avenue
Montgomery, AL 36106
(R-65-s)

D 09-05-15-2-002-001,000
AJ McMurry Development Properties LLC
1444 Nelson Avenue
Montgomery, AL 36106
(O-1)

D 09-05-15-2-002-001,000
AJ McMurry Development Properties LLC
1444 Nelson Avenue
Montgomery, AL 36106
(O-1)

D 09-05-15-2-002-001,000
AJ McMurry Development Properties LLC
1444 Nelson Avenue
Montgomery, AL 36106
(O-1)

D 09-05-15-2-002-005,000
RCS at Millstone Park No. 1
Oak Brook, IL 60222
Lot 1, Block C
Venetec at Millstone Park No. 1
(98 50 FC 84)
(R-65-m)

D 09-05-15-2-002-004,000
Colton Farm Place LLC
1444 Nelson Avenue
Montgomery, AL 36106
(B-3)

D 09-05-15-2-002-004,000
Colton Farm Place LLC
1444 Nelson Avenue
Montgomery, AL 36106
(B-3)

D 09-05-15-2-002-004,000
AJ McMurry Development Properties LLC
1444 Nelson Avenue
Montgomery, AL 36106
(O-1)

861.33'
S60° 03' 43"E
Kennesaw Railroad

ch 135.67'
N47° 52' 41"E
(Rd 740.00')

(O-1)

828.01'
N57° 12' 51"W

166.11'
N42° 57' 09"E

661.14' 53"W
261.26'

ch 299.44'
S55° 21' 44"W
(Rd 1460.00')

(O-1)

S59° 17' 15"E
1085.10'

N30° 42' 45"E
467.22'

