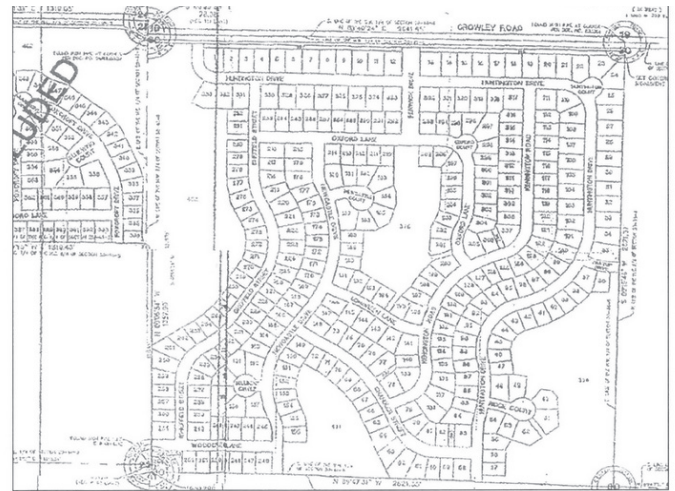
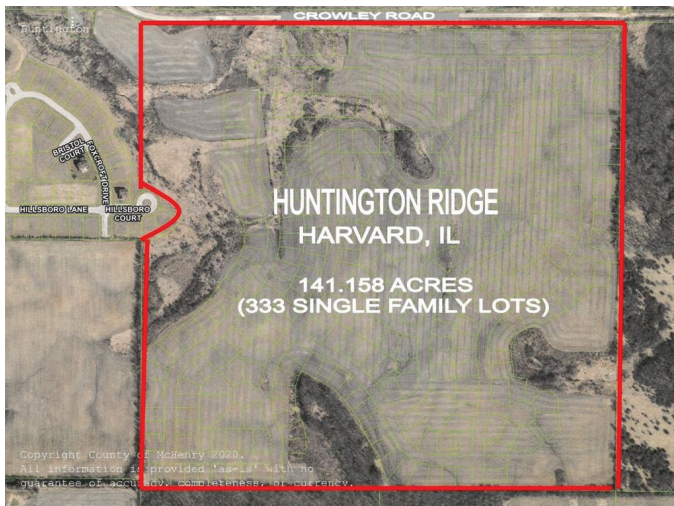


HUNTINGTON RIDGE SUBD CROWLEY ROAD HARVARD, IL 60033

FOR SALE

MLS #10668796

May 11, 2021



141.158 ACRES (333 LOTS)

\$1,235,000 (\$8,749/acre)

DESCRIPTION

SPECIFICATIONS

333 Lots Residential Subdivision Land

Fantastic opportunity available for builder or possibly a group of builders to come together and purchase this platted subdivision. 2,660 SF of frontage on south side of Crowley Road, zoned for detached single family residential use. Has been platted as the Huntington Ridge Subdivision with 333 sites, zoned R2 Residential District. See attached parcel numbers and plat. Located south of an unpaved portion of Crowley Road, 1/4 mile east of the paved intersection of Crowley and Harvard Hills Road. Adjacent to the subject on the west is a residential subdivision known as Huntington Ridge Estates. 2.5 miles NE of Harvard's downtown area. \$8,749/acre.

Description	Residential Subdivision Land
Land Size	141.158 AC (6,148,842 SF)
Topography	Level
Environmental Status	TBD
Utilities	Nearby
Sewer/Water	N/A
Frontage Dimensions	±2,660 SF on Crowley Road
Zoning	R2 Residential District
Real Estate Taxes	TBD
Possession	At Closing
PIN Number	Multiple (333 Lots)

No warranty or representation is made as to the accuracy of the foregoing information. Terms of sale or lease and availability are subject to change or withdrawal without notice. This document is for information purposes only. No offer of sub-agency is being made.

PREMIER
COMMERCIAL REALTY

- Industrial
- Commercial
- Office
- Land
- Business

[CLICK HERE](#)
to view our website

9225 S. IL Route 31
Lake in the Hills, IL 60156
www.PremierCommercialRealty.com
Office: 847-854-2300 | Fax: 847-854-2380

HEATHER SCHWEITZER

Vice President/Managing Broker
Office: 847-854-2300 Ext 15
Cell: 815-236-9816

HeatherS@PremierCommercialRealty.com

SHARON GLASSHOF

Senior Broker
Office: 847-854-2300 Ext 14
Cell: 847-533-6974

SharonG@PremierCommercialRealty.com

