



JOHN STANLEY

&

ASSOCIATES

COMMERCIAL REAL ESTATE



**± 2.08 Acres - I-65 @ Exit #181  
Millbrook, AL 36054**

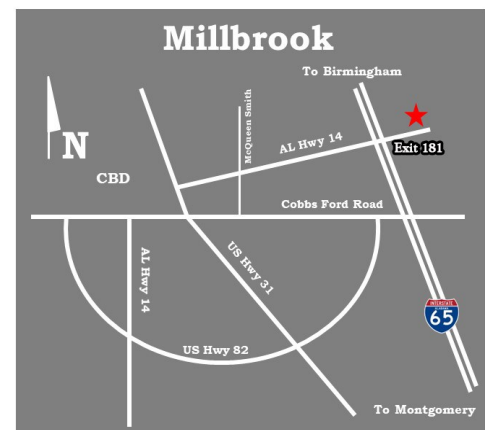
**FOR SALE**

- Sale Price:** \$795,000.00
- Land Size:** ± 2.08 Acres (± 1.34 Acres Usable)
- Zoning:** B-2
- Best Use:** Restaurant, Retail, Commercial
- Visibility:** Excellent
- Possession:** Immediate
- Traffic Count:** 32,855 (2018 AADT)
- Listing Type:** Exclusive

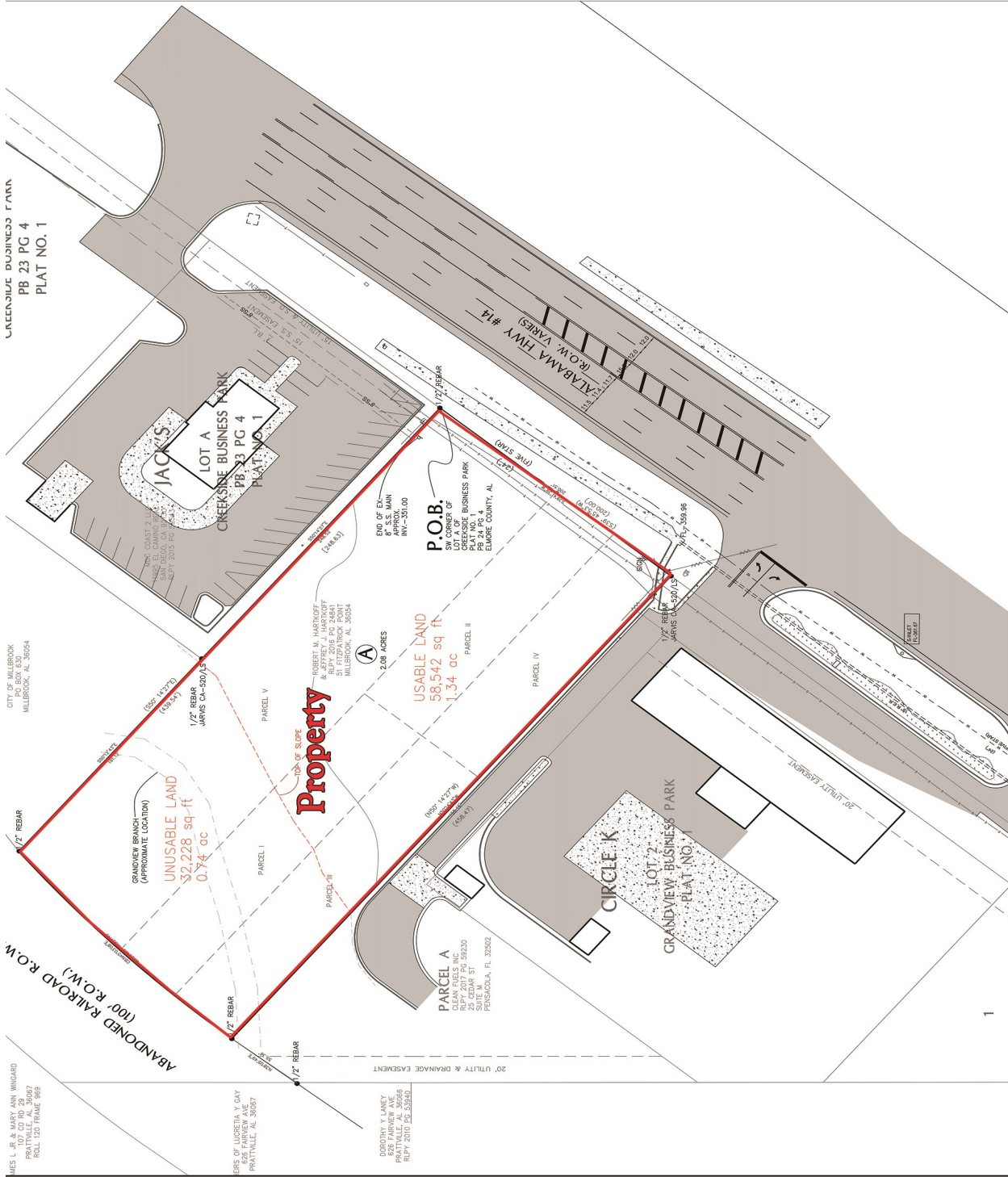
Excellent lot located in Millbrook, Alabama very close to I-65 at Exit #181. Near Circle K, Jacks, Taco Bell, Rural Urgent Care and Walmart. Contact Lee Meriwether, CCIM, for more information at (334) 398-1808.



**Lee W. Meriwether, CCIM**  
 John Stanley & Associates, Inc.  
 4747 Woodmere Blvd.  
 Montgomery, AL 36106  
 VOICE (334) 271-2475  
 FAX (334) 271-2421  
 CELL (334) 398-1808  
[lmeriwether@johnstanleyassociates.com](mailto:lmeriwether@johnstanleyassociates.com)  
[www.johnstanleyassociates.com](http://www.johnstanleyassociates.com)



All information is from sources deemed reliable, but no warranty is made as to the accuracy thereof and same is submitted subject to errors, omissions, change of price, or other conditions, such as prior sales or withdrawal without notice by John Stanley & Associates, Inc. or the Owner.



GREENVILLE BUSINESS PARK  
PB 23 PG 4  
PLAT NO. 1

CITY OF MILBROOK  
PO BOX 630  
MILBROOK, AL 36054

ABANDONED RAILROAD R.O.W.  
(100' R.O.W.)

JAMES L. JR. & MARY ANN WINGARD  
107 CEDAR ST  
PRATTVILLE, AL 36077  
ROLL 120 FRAME 699

UNUSABLE LAND  
32,228 sq-ft  
0.74 ac

**Property**

ROBERT M. HARTKOPF  
REP V 2016 PG 24841  
PATRICK POINT  
MILBROOK, AL 36054

2.08 ACRES  
USABLE LAND  
58,542 sq ft  
1.34 ac

PARCEL A  
DOROTHY Y. LANEY  
107 CEDAR ST  
PRATTVILLE, AL 36077  
ROLL 120 PG 632640

P.O.B.  
SW CORNER OF  
LOT A OF  
CREEKSIDE BUSINESS PARK  
PLAT NO. 1  
EMERSON COUNTY, AL

CIRCLE K  
LOT 2  
GRANDVIEW BUSINESS PARK  
PLAT NO. 1

ALABAMA TRVY #14  
(R.O.W. VARIES)

GRANDVIEW BUSINESS PARK  
LOT 2  
PLAT NO. 1