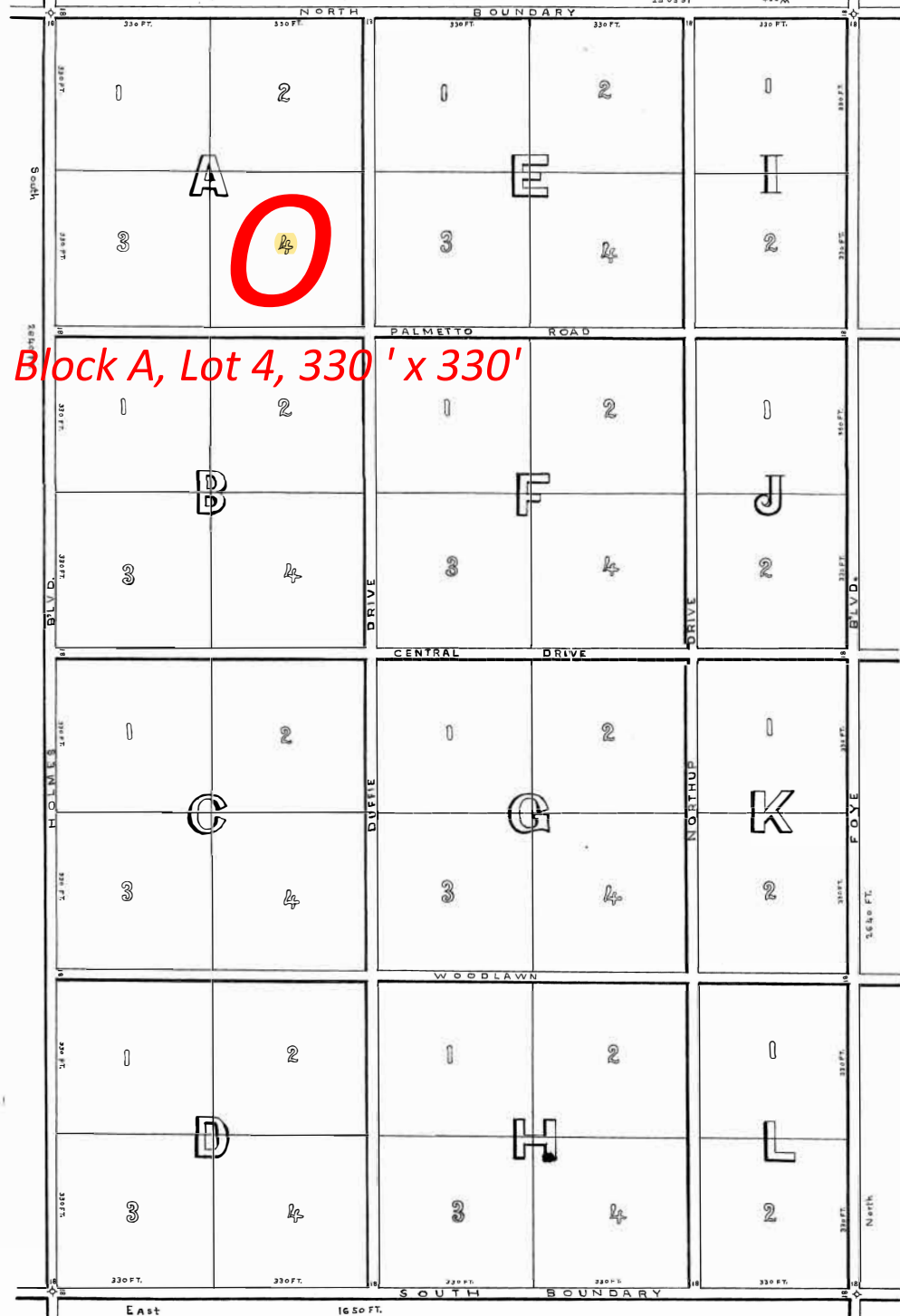


WOODLAND ACRES.

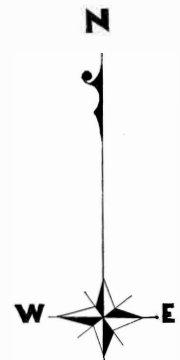
T.J. FOYE
REPRESENTATIVE
PUNTA GORDA, FLA.

SUB-DIVISION
OF
100 ACRES IN LOTS OF 2 1/2 ACRES
EACH
MORE OR LESS.

BEING 80 ACRES OF THE WEST
ONE HALF AND 20 ACRES OF THE
EAST ONE HALF OF THE S.E. QUARTER
OF SECTION 14, TOWNSHIP 41 S.,
RANGE 23 E. CHARLOTTE CO. FLA.
AND ALL BEING MORE OR LESS.



Block A, Lot 4, 330' x 330'



MAGNETIC MERIDIAN
Var. 2° E

SCALE
PER INCH 100 FT.

PROPERTY LINES TO
STREET CENTERS.
STREETS 18 FT. WIDE.

ANGLES INTENDED TO CONTAIN
90°

PLATTED
by
ANDREW DUFFIE, C.E.
PUNTA GORDA, FLORIDA.

This is to certify that I have carefully
checked the above plat of Woodland Acres
and find same to be correct.
This 22nd day of June 1928.
A. C. Duffie
County Surveyor
For Charlotte County, Fla.

#2900
up
of Plat
B. B. B. B.