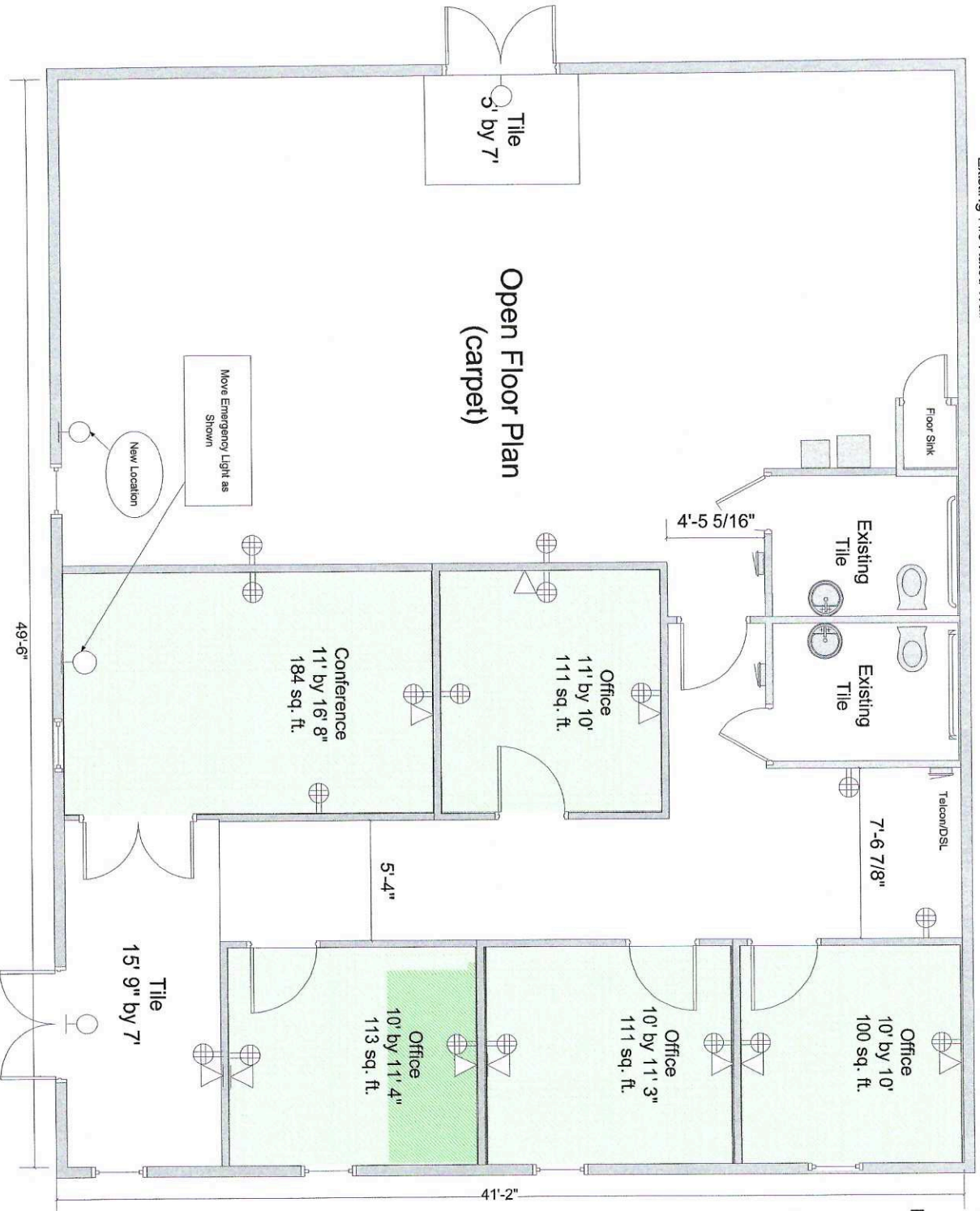


ALAFAYA PROFESSIONAL PARK

Unit B3

scale  
1"=40'

Existing Fire Rated Wall



INTER-COASTAL ELECTRONICS INC.

1842 N ALAFAYA TRAIL

SUITE "C" & "D"

CONTACT: JOHN OLSEN

(407)737-3370

Instructions to Builders: See attached specifications

REV'D  
16 NOVEMBER 2010

FLOOR PLAN



Combination Telephone  
Data Ports



Quad Electrical  
Outlet



Emergency Light