



SPACE AVAILABLE AT KINGSPOINTE PARKWAY



**7751 Kingspointe Parkway
Suite 105
ORLANDO, FL 32819**

2,400 SF
\$502,000

PROPERTY DETAILS

- Located in Crownspointe Commerce Park
- Centrally located near major highways; 528, I-4, International Drive, Sandlake Road, & the Turnpike
- 15 minutes from the Orlando Convention Center & 20 minutes from the Orlando International Airport
- Flex space unit with office build out
- ESFR system installed
- Near Amazon, Xymogn Gym, & Behr Facilities

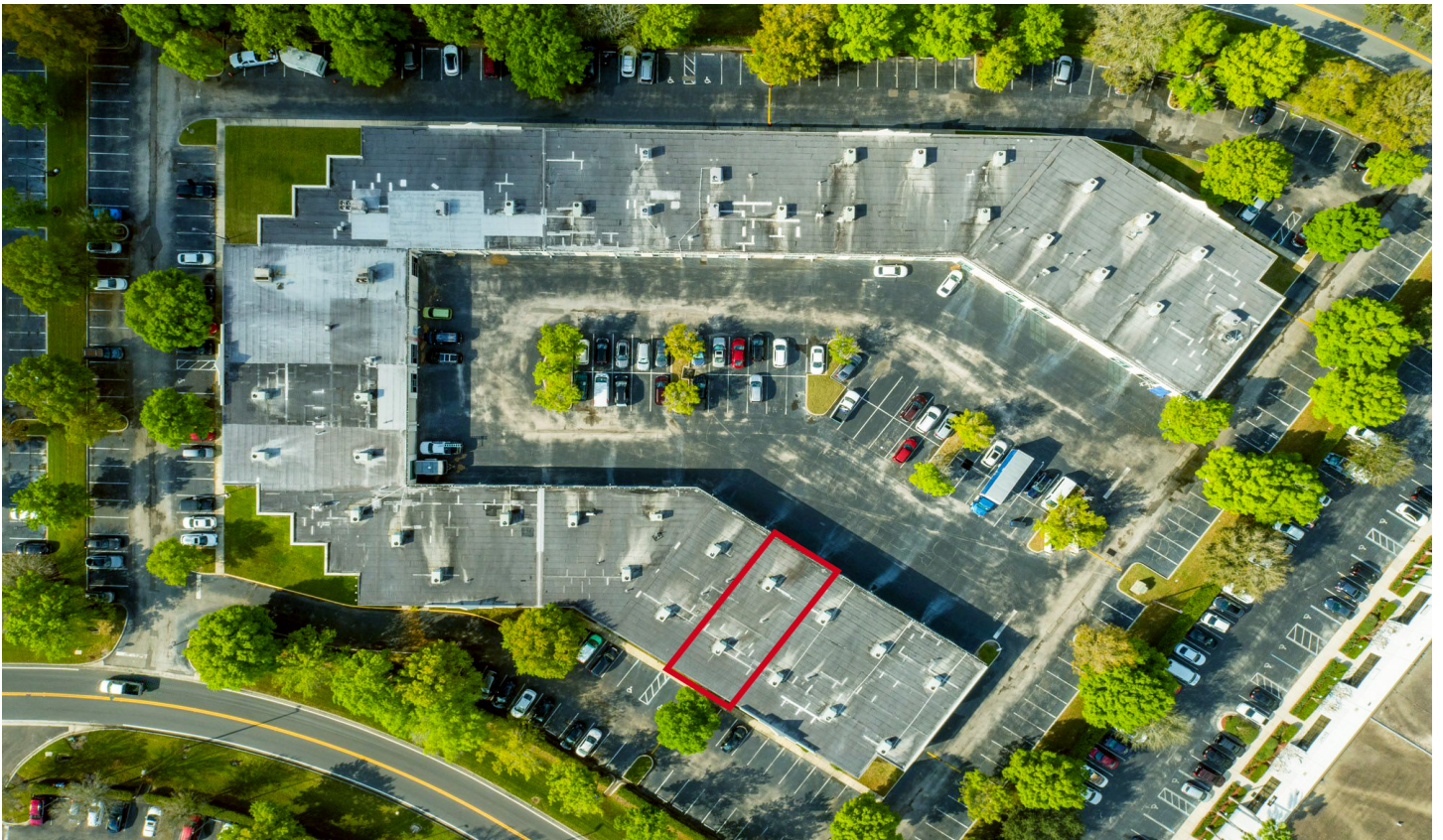
- + Single Grade Level Door
- + ESFR System Installed
- + Zoned I
- + Front and Rear Entrances
- + Ample Parking
- + Located Near Many Restaurants



BEYOND
COMMERCIAL

7751 Kingspointe Parkway Unit 105
ORLANDO, FL 32819

OUTER VIEW

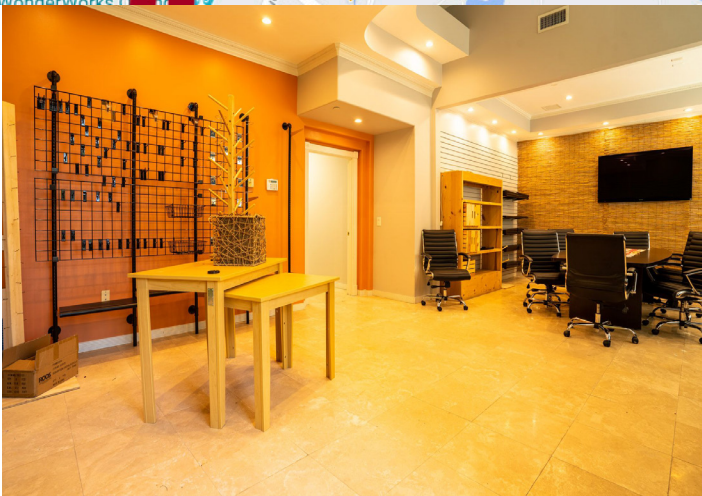
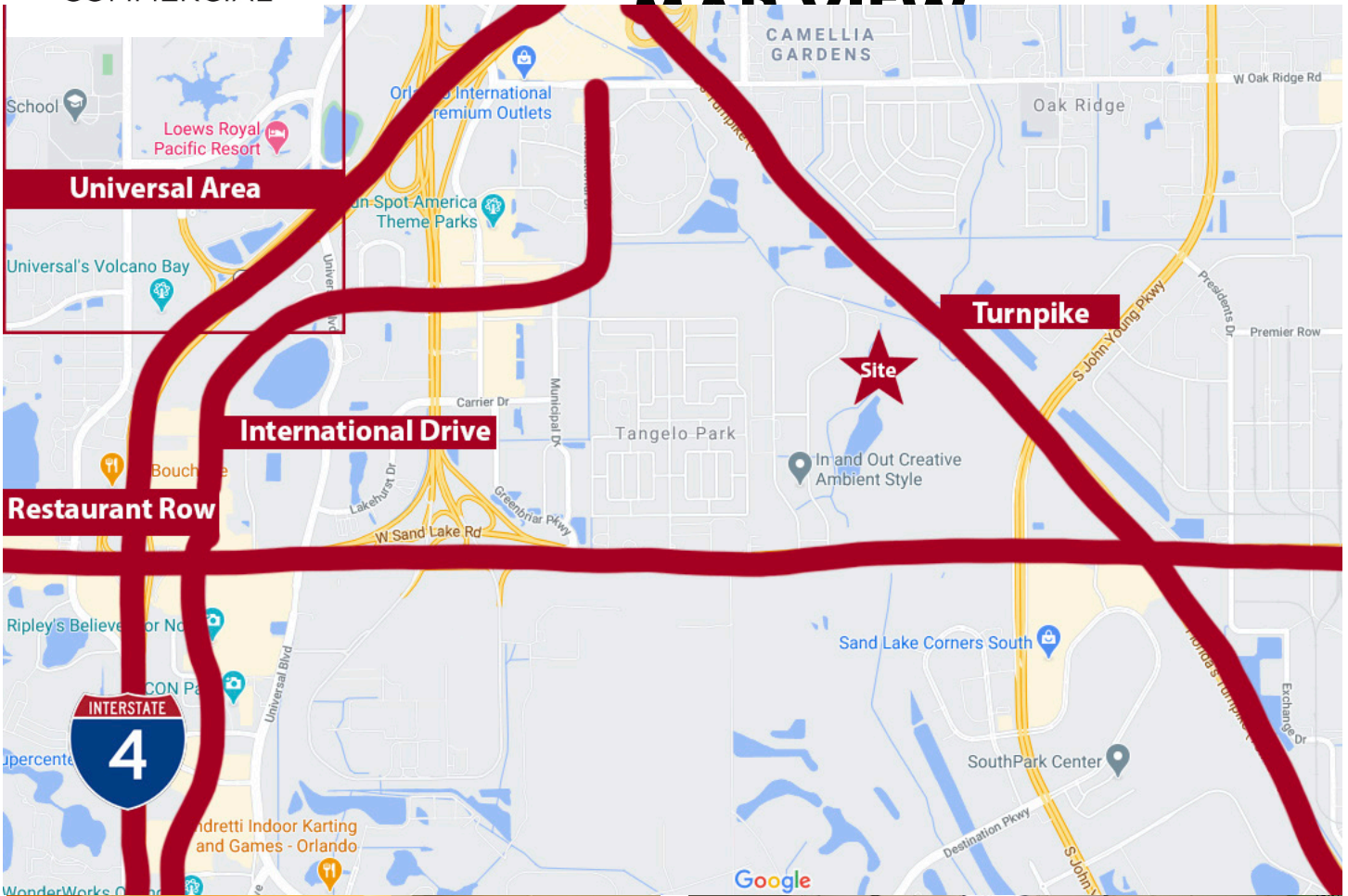




**BEYOND
COMMERCIAL**

**7751 Kingspointe Parkway Unit 105
ORLANDO, FL 32819**

MAP VIEW



AMY CALANDRINO, CCIM
Founding Principal
407-492-0433
amy@beyondcommercial.com

RAFAEL MENDEZ
Commercial Associate
407-748-8970
Rafael@beyondcommercial.com

No warranty or representation, express or implied, is made as to the accuracy of the information contained herein, and same is submitted subject to errors, omissions, change of price, rental or other conditions, withdrawal without notice, and to any other specific listing conditions, imposed by our principals. Beyond Commercial, LLC d/b/a Beyond Commercial is a Licensed Real Estate Broker.

www.beyondcommercial.com + (407) 641-2221 + 175 Lookout Pl, Ste, 200 + Maitland, FL 32751