

Maitland Professional Office Building

**OFFERING SUMMARY**

Sale Price:	\$895,000
Building Size:	3,796 USF
Price / SF:	\$235.77
Move-in Ready	

PROPERTY OVERVIEW:

Maitland Professional Office Building
Well-established Keewin Office Park. Excellent demographics.
Located at intersection of Maitland Ave. & Maitland Blvd.
Approx 1mi to I-4 and .25mi to 17/92

PROPERTY HIGHLIGHTS:

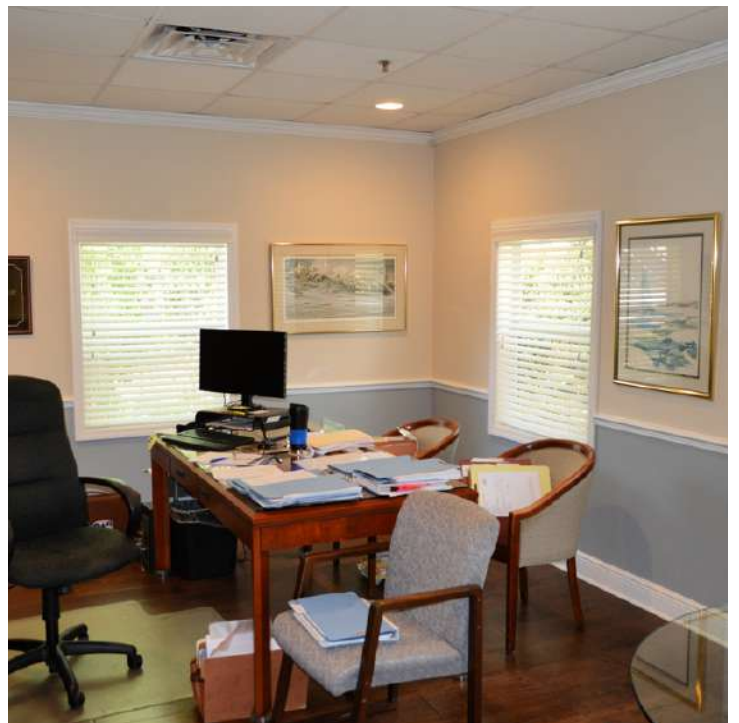
- 2 story, free-standing office.
- Professional use (currently law office) with building signage.
- Multiple options: Owner/User, User + Tenant or 2 Tenants
- Separately metered 1st & 2nd floor.
- 1st-floor conf room & two sets of restrooms p/floor.
- Excellent condition. Block construction. Fire sprinklered.
- Reserved and ample parking. Brick patio.
- High-end finishes including travertine & wood plank flooring.

LEE ZERIVITZ, SIOR, CCIM
Managing Partner
407.644.CITY
lee@citycommercial.com

CITY COMMERCIAL
1101 Symonds Ave.
Winter Park, FL 32789
CITYcommercial.com



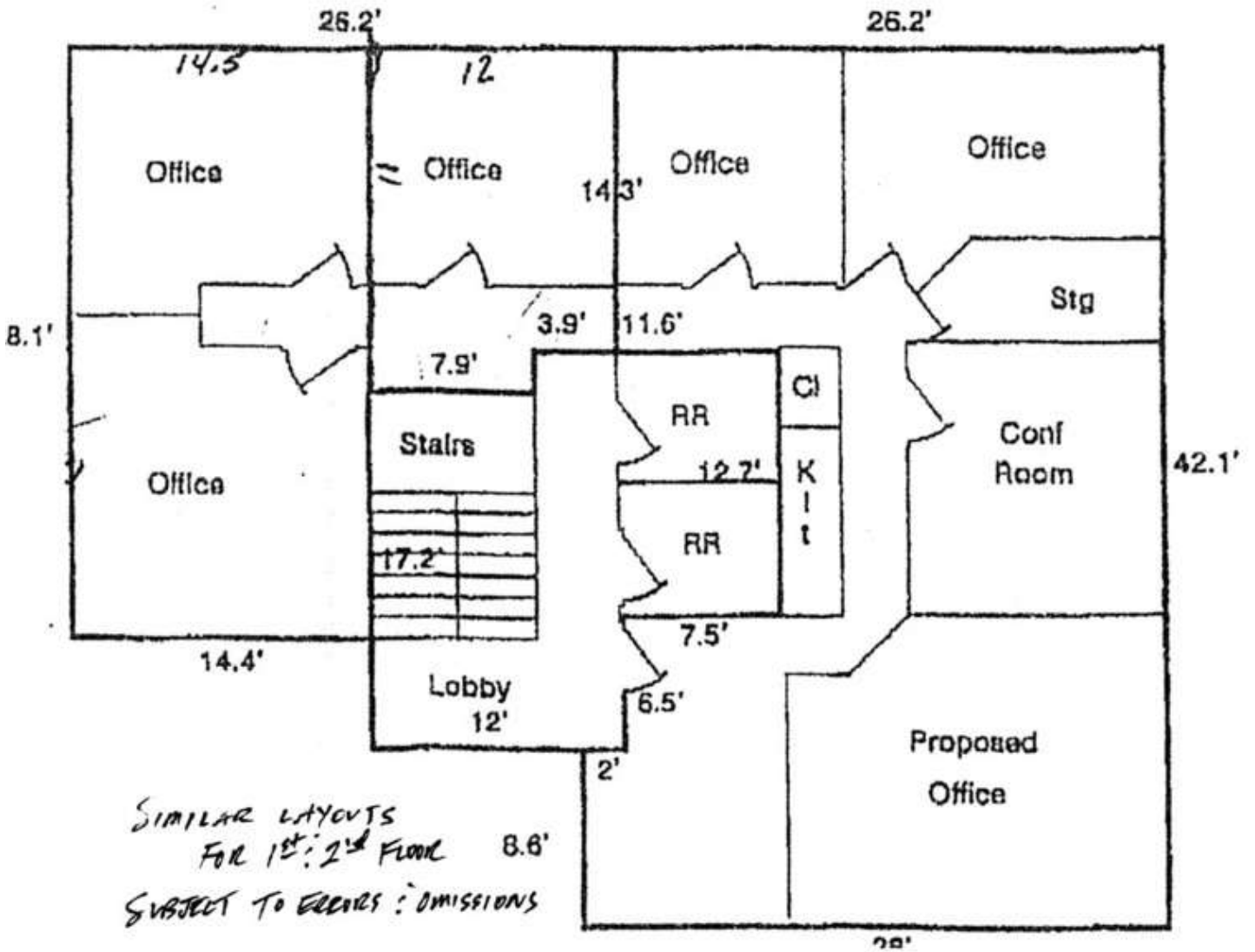
Photos



Additional Photos



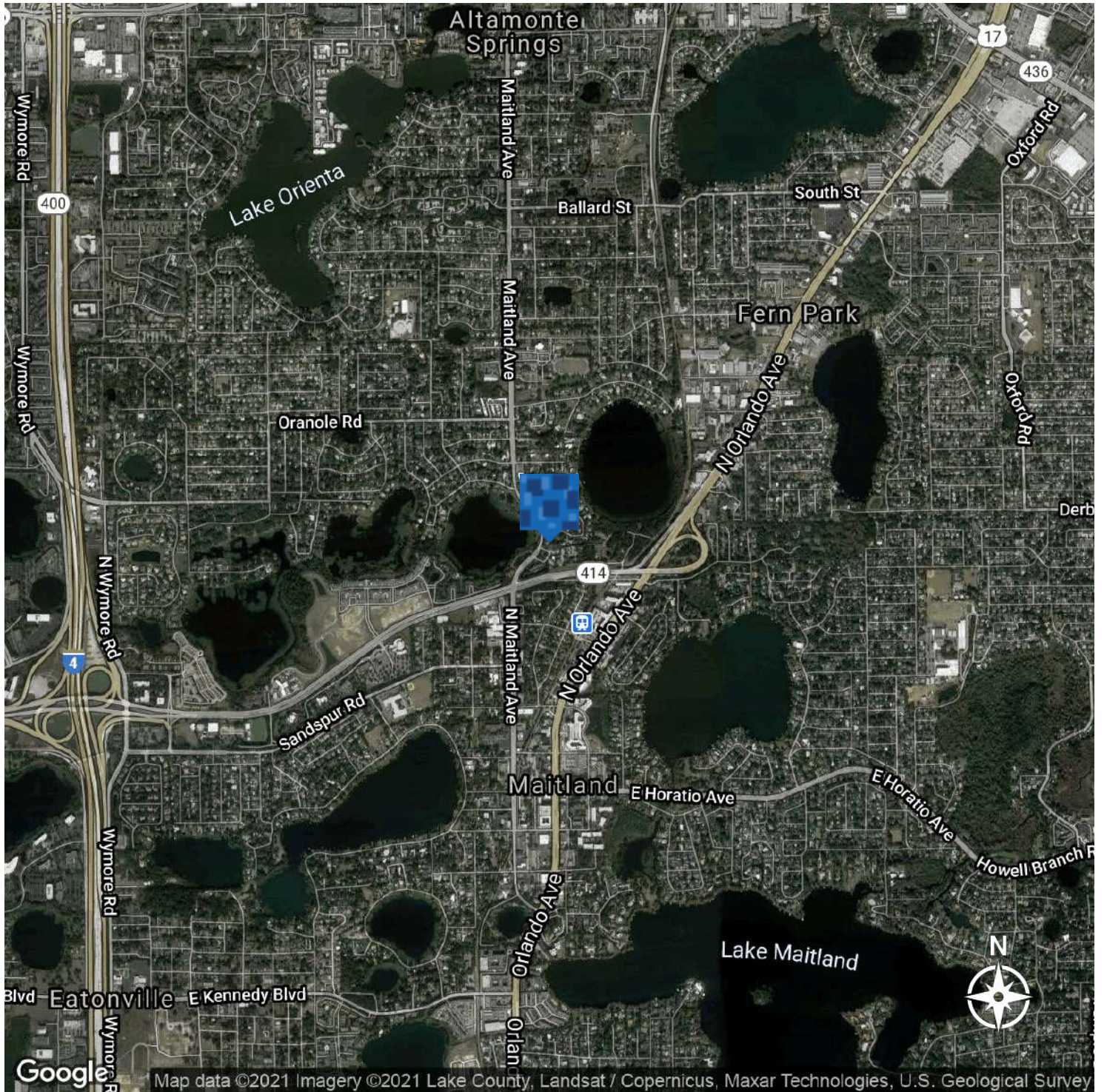
Space Plan



Aerials



Location Map



LEE ZERIVITZ, SIOR, CCIM
Managing Partner
407.644.CITY
lee@citycommercial.com

CITY COMMERCIAL
1101 Symonds Ave.
Winter Park, FL 32789
CITYcommercial.com



Demographics Map & Report



POPULATION	1 MILE	3 MILES	5 MILES
Total Population	3,651	43,034	117,657
Average age	40.4	36.7	35.2
Average age (Male)	34.8	35.0	33.7
Average age (Female)	43.1	37.8	36.3

HOUSEHOLDS & INCOME	1 MILE	3 MILES	5 MILES
Total households	1,340	14,552	40,116
# of persons per HH	2.7	3.0	2.9
Average HH income	\$84,709	\$91,351	\$86,687
Average house value	\$337,148	\$340,849	\$319,566

** Demographic data derived from 2010 US Census*

